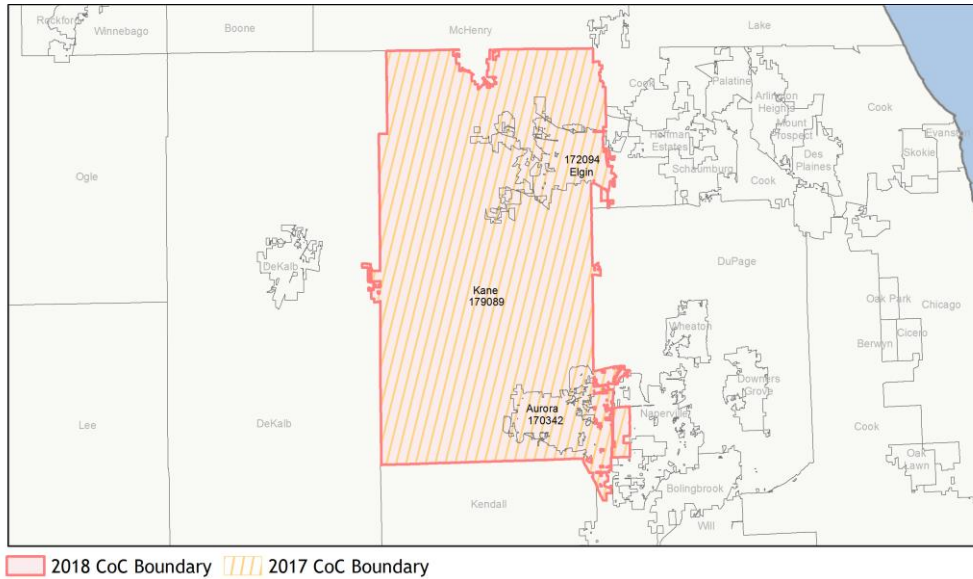
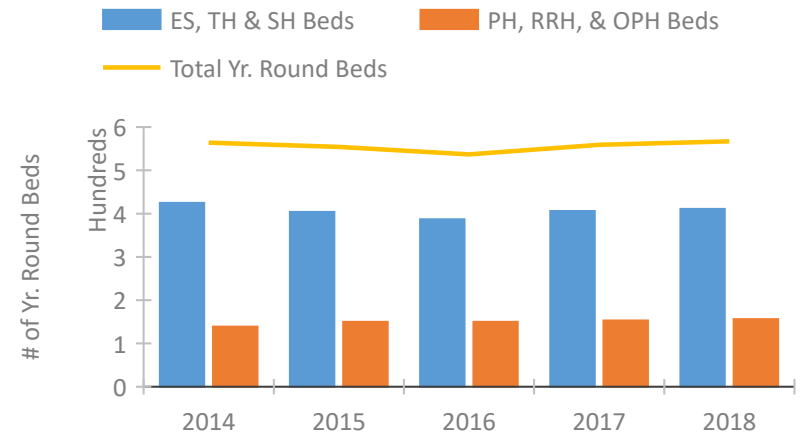


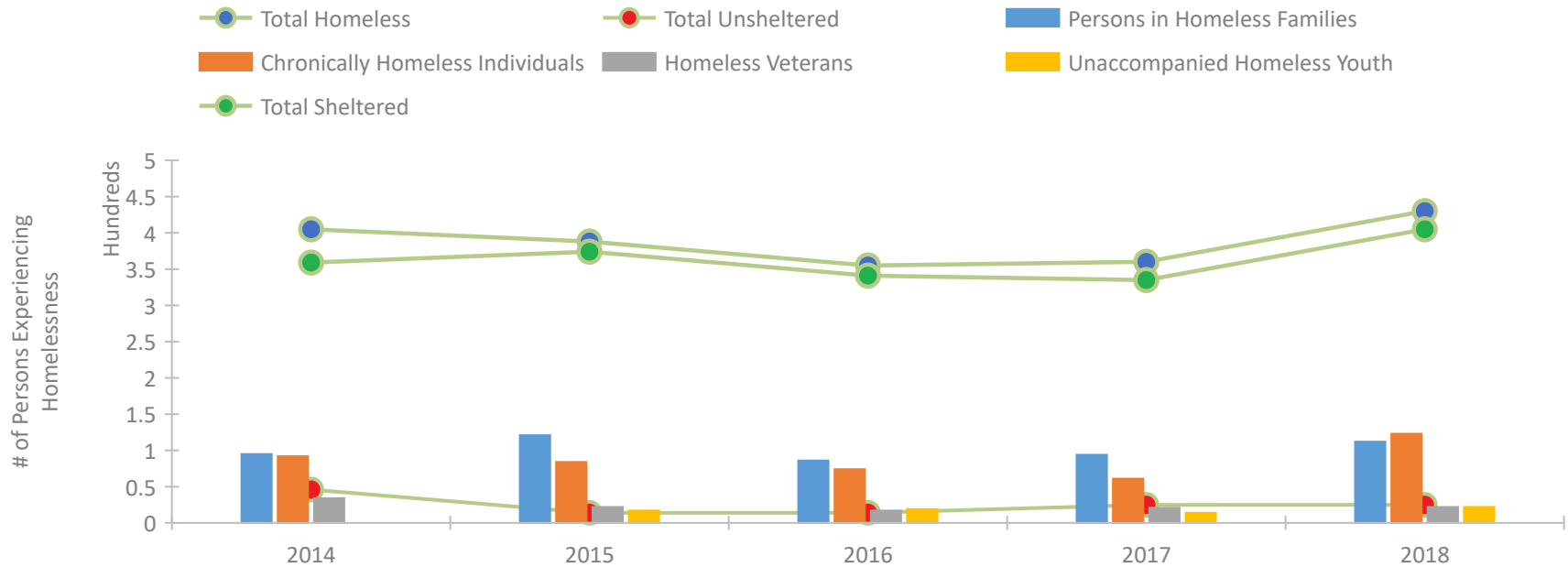
## CoC Performance Profile IL-517 Aurora, Elgin/Kane County CoC



### Housing Inventory Count by Program Type

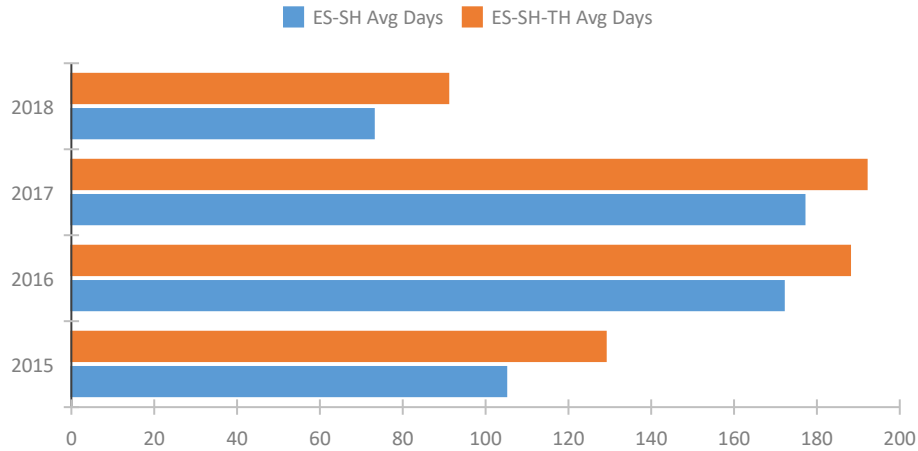


### Homeless Population – Point-in-Time (PIT) Count

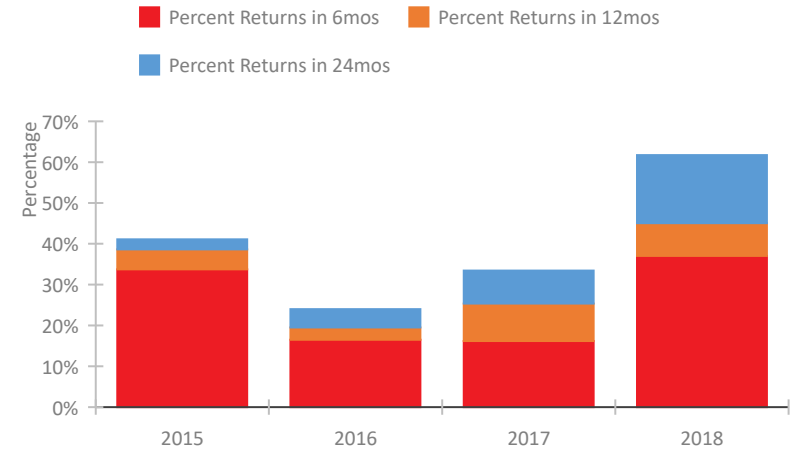


## CoC Performance Profile IL-517 Aurora, Elgin/Kane County CoC

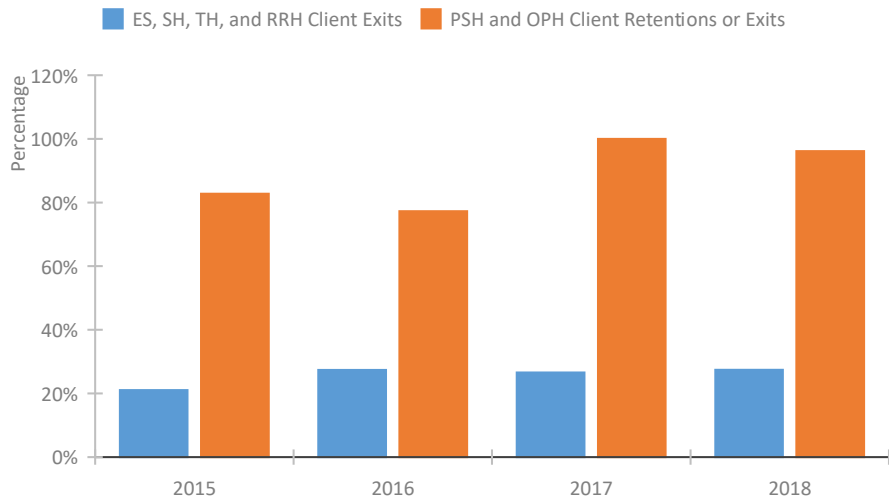
### Length of Time Homeless



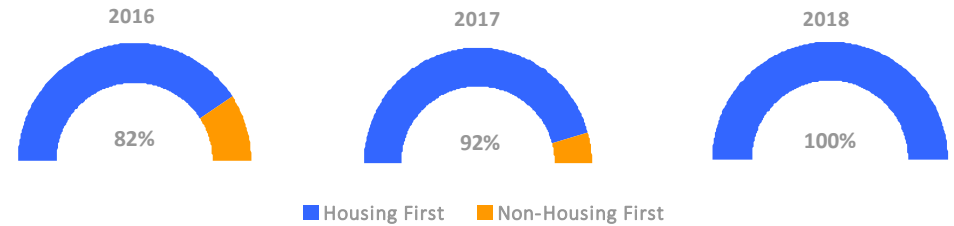
### Returns to Homelessness Over Time



### Exits to Permanent Housing by Program Type



### Proportion of Housing First Projects by Year



#### Number of Projects by Year

	2016	2017	2018
Housing First Projects	9	11	14
Non-Housing First Projects	2	1	0

## Data Summary: IL-517 Aurora, Elgin/Kane County CoC

### Point-In-Time Count Summary

	2014	2015	2016	2017	2018	2017-18 Change	% Change
Number of Sheltered Persons in Families	95	121	86	94	112	18	19%
Number of Unsheltered Persons in Families	0	0	0	0	0	0	--
Number of Sheltered Individuals	264	253	255	241	293	52	22%
Number of Unsheltered Individuals	46	14	14	25	25	0	0%
<b>Total Homeless Persons</b>	<b>405</b>	<b>388</b>	<b>355</b>	<b>360</b>	<b>430</b>	<b>70</b>	<b>19%</b>
Number of Sheltered Families	31	41	31	27	32	5	19%
Number of Unsheltered Families	0	0	0	0	0	0	--
<b>Number of Total Families</b>	<b>31</b>	<b>41</b>	<b>31</b>	<b>27</b>	<b>32</b>	<b>5</b>	<b>19%</b>
Sheltered Chronically Homeless Individuals	71	75	65	46	108	62	135%
Unsheltered Chronically Homeless Individuals	21	9	9	15	15	0	0%
<b>Total Chronically Homeless Individuals</b>	<b>92</b>	<b>84</b>	<b>74</b>	<b>61</b>	<b>123</b>	<b>62</b>	<b>102%</b>
Sheltered Veterans	28	21	16	21	22	1	5%
Unsheltered Veterans	6	1	1	0	0	0	--
<b>Total Veterans</b>	<b>34</b>	<b>22</b>	<b>17</b>	<b>21</b>	<b>22</b>	<b>1</b>	<b>5%</b>
Sheltered Unaccompanied Youth (up to 24)	--	17	19	14	22	8	57%
Unsheltered Unaccompanied Youth (up to 24)	--	0	0	0	0	0	--
<b>Total Unaccompanied Youth (up to 24)</b>	<b>--</b>	<b>17</b>	<b>19</b>	<b>14</b>	<b>22</b>	<b>8</b>	<b>57%</b>

### System Performance Measures Summary

	2014	2015	2016	2017	2018	2017-18 Change	% Change
Average Length of Time Homeless (days)	N/A	129	188	192	91	-101	-52.6%
Rate People Return to Homelessness in 6 Months	N/A	33.7%	16.5%	16.2%	37.0%	20.9%	N/A
Number of People who are Homeless for the First Time	N/A	945	1097	797	1126	329	41.3%
Rate People Exit from ES, SH, TH, and RRH to PH	N/A	21.0%	27.4%	26.6%	27.4%	0.8%	N/A
Rate People in PSH and OPH Retain or Exit to PH	N/A	82.8%	77.3%	100.0%	96.2%	-3.8%	N/A

### Housing Inventory Count Summary

	2014	2015	2016	2017	2018	2017-18 Change	% Change
Emergency Shelter (ES)	316	316	307	333	338	5	2%
Transitional Housing (TH)	109	88	80	73	73	0	0%
Permanent Supportive Housing (PSH)	115	121	115	78	83	5	6%
Rapid Re-Housing (RRH)	24	29	11	28	49	21	75%
Other Permanent Housing (OPH)	--	--	24	47	24	-23	-49%

### Award Summary

	2014	2015	2016	2017	2018	2017-18 Change	% Change
<b>Continuum of Care (CoC)</b>	\$1,530,829	\$1,621,013	\$1,622,893	\$1,765,661	\$1,821,498	\$55,837	3%
<b>Emergency Solutions Grants (ESG)</b>	--	--	--	--	\$136,287	--	--