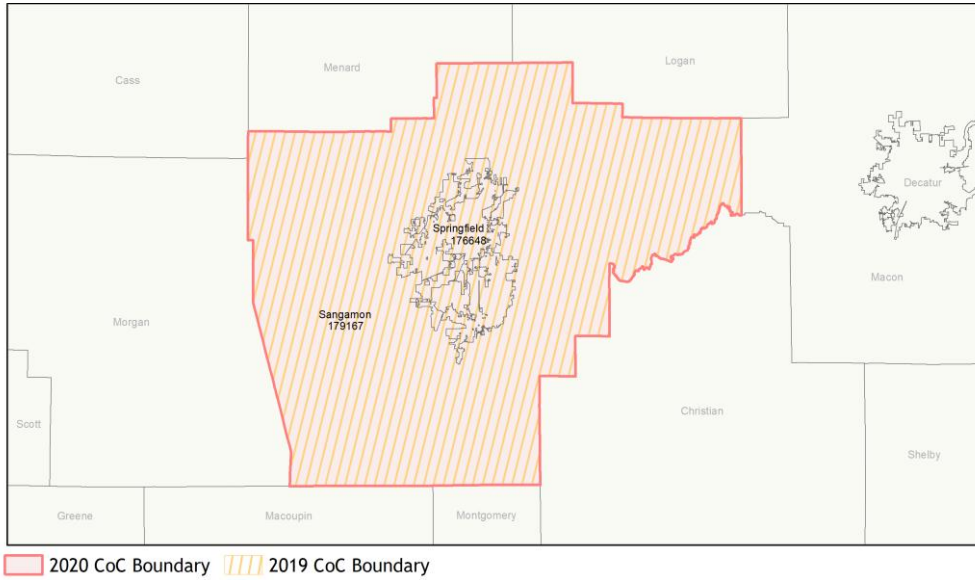
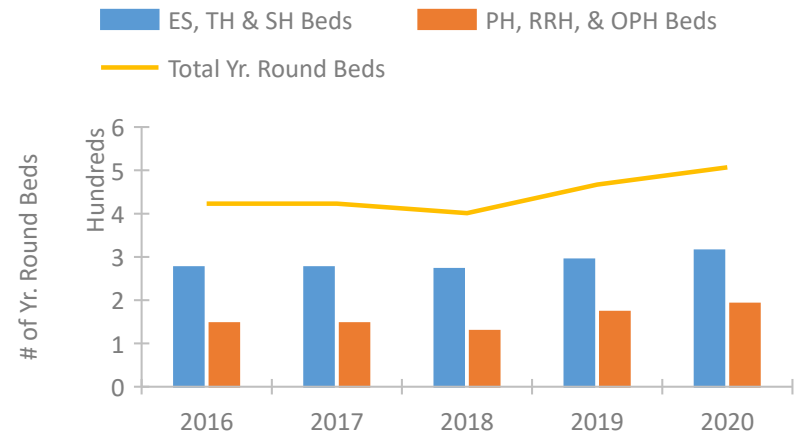


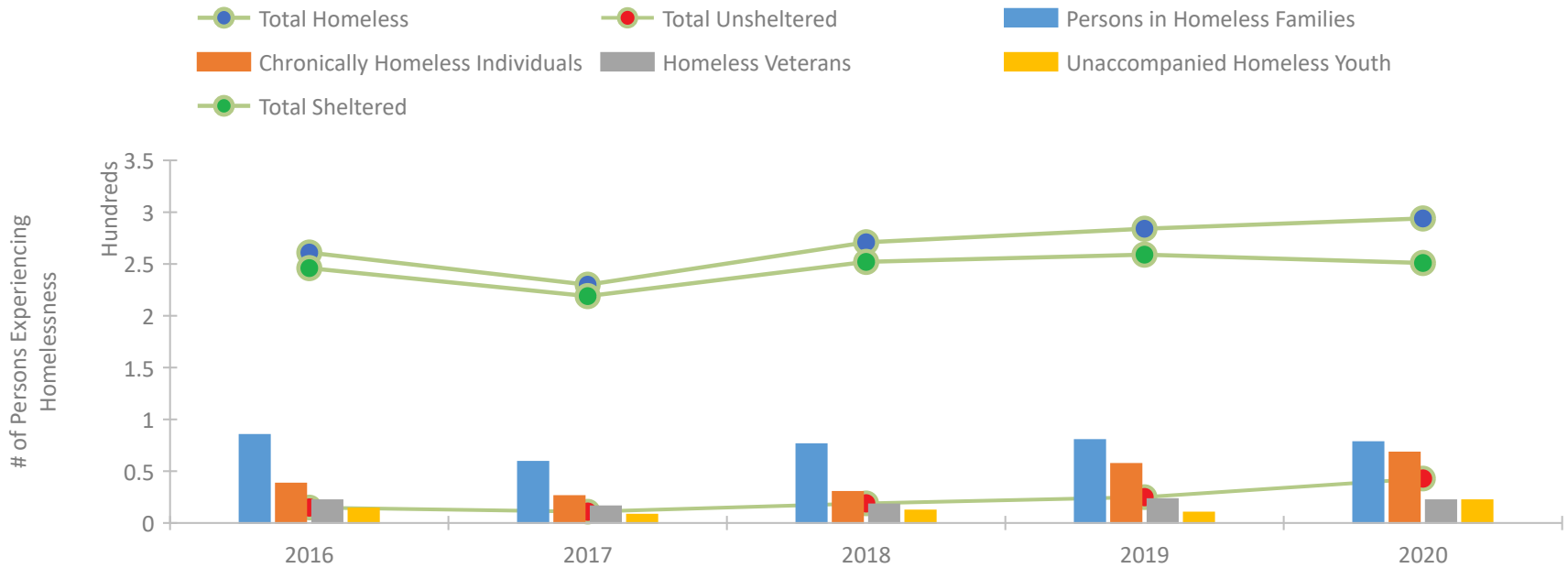
## CoC Performance Profile IL-513 Springfield/Sangamon County CoC



### Housing Inventory Count by Program Type

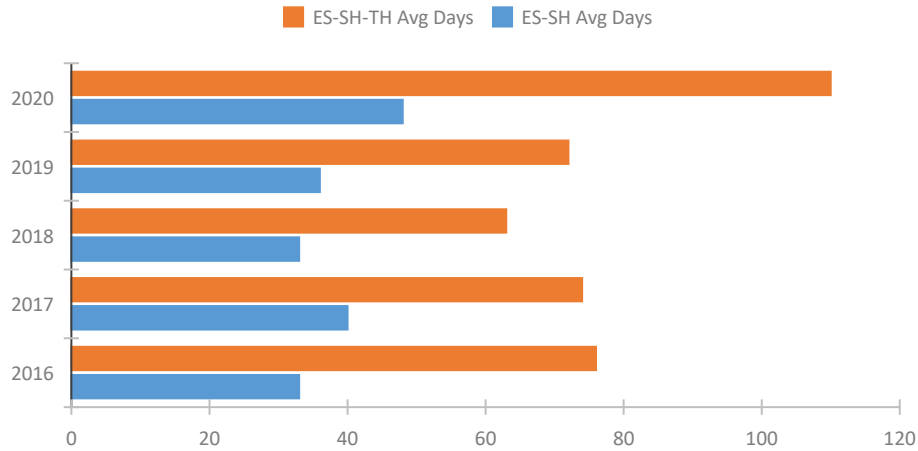


### Homeless Population – Point-in-Time (PIT) Count

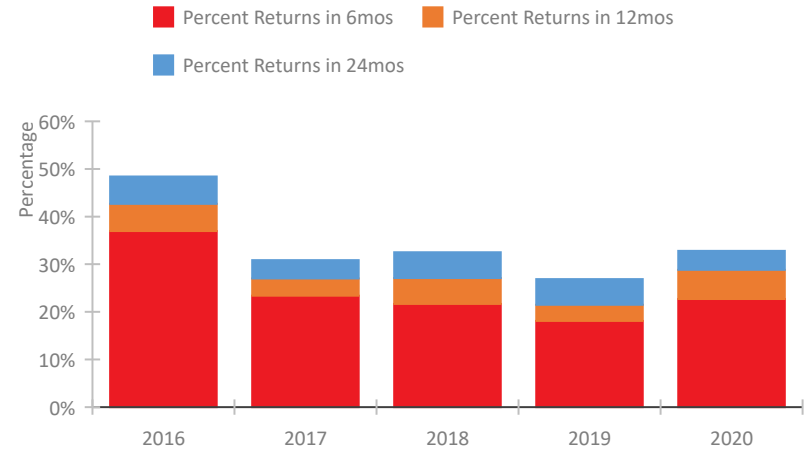


## CoC Performance Profile IL-513 Springfield/Sangamon County CoC

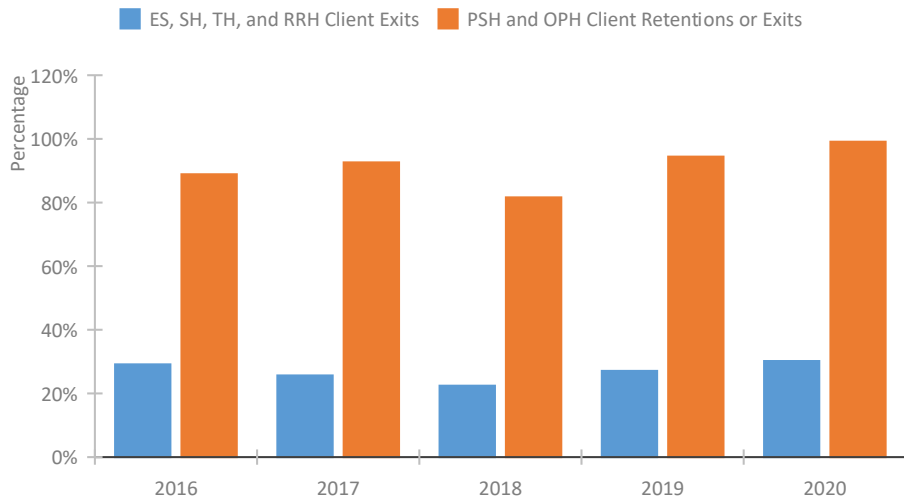
### Length of Time Homeless



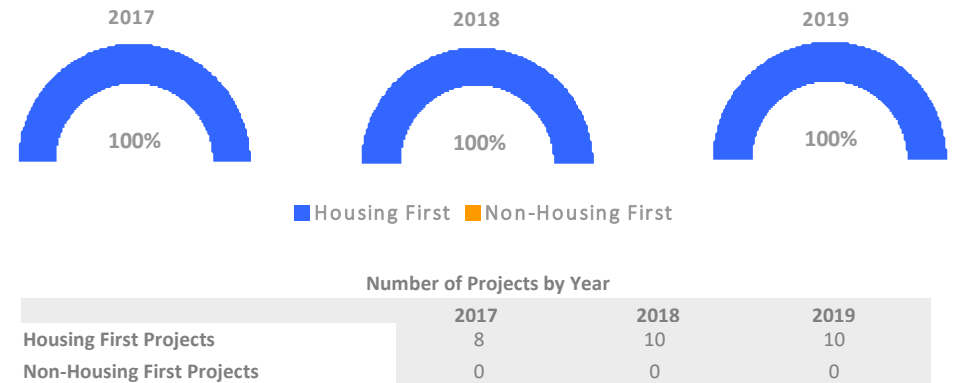
### Returns to Homelessness Over Time



### Exits to Permanent Housing by Program Type



### Proportion of Housing First Projects by Year\*



\*In 2020 HUD awarded renewal projects noncompetitively, therefore no new data was collected and Housing First data remains the same from 2019 to 2020.

**Data Summary: IL-513 Springfield/Sangamon County CoC**

**Point-In-Time Count Summary**

	2016	2017	2018	2019	2020	2019-20 Change	% Change
Number of Sheltered Persons in Families	85	59	74	80	74	-6	-8%
Number of Unsheltered Persons in Families	0	0	2	0	4	4	100%
Number of Sheltered Individuals	161	160	178	179	177	-2	-1%
Number of Unsheltered Individuals	15	11	17	25	39	14	56%
<b>Total Homeless Persons</b>	<b>261</b>	<b>230</b>	<b>271</b>	<b>284</b>	<b>294</b>	<b>10</b>	<b>4%</b>
Number of Sheltered Families	27	20	26	32	23	-9	-28%
Number of Unsheltered Families	0	0	1	0	2	2	100%
<b>Number of Total Families</b>	<b>27</b>	<b>20</b>	<b>27</b>	<b>32</b>	<b>25</b>	<b>-7</b>	<b>-22%</b>
Sheltered Chronically Homeless Individuals	25	23	24	50	52	2	4%
Unsheltered Chronically Homeless Individuals	13	3	6	7	16	9	129%
<b>Total Chronically Homeless Individuals</b>	<b>38</b>	<b>26</b>	<b>30</b>	<b>57</b>	<b>68</b>	<b>11</b>	<b>19%</b>
Sheltered Veterans	21	14	18	20	20	0	-0%
Unsheltered Veterans	1	2	0	3	2	-1	-33%
<b>Total Veterans</b>	<b>22</b>	<b>16</b>	<b>18</b>	<b>23</b>	<b>22</b>	<b>-1</b>	<b>-4%</b>
Sheltered Unaccompanied Youth (up to 24)	14	8	12	9	15	6	67%
Unsheltered Unaccompanied Youth (up to 24)	0	0	0	1	7	6	600%
<b>Total Unaccompanied Youth (up to 24)</b>	<b>14</b>	<b>8</b>	<b>12</b>	<b>10</b>	<b>22</b>	<b>12</b>	<b>120%</b>

**System Performance Measures Summary**

	2016	2017	2018	2018	2020	2019-20 Change	% Change
Average Length of Time Homeless (days)	76	74	63	72	110	38	52.8%
Rate People Return to Homelessness in 6 Months	36.9%	23.4%	21.7%	18.1%	22.7%	4.6%	N/A
Number of People who are Homeless for the First Time	769	754	801	761	437	-324	-42.6%
Rate People Exit from ES, SH, TH, and RRH to PH	29.1%	25.7%	22.4%	27.1%	30.2%	3.1%	N/A
Rate People in PSH and OPH Retain or Exit to PH	88.9%	92.6%	81.6%	94.4%	99.1%	4.7%	N/A

**Housing Inventory Count Summary**

	2016	2017	2018	2019	2020	2019-20 Change	% Change
Emergency Shelter (ES)	115	115	153	127	133	6	5%
Transitional Housing (TH)	161	161	119	167	182	15	9%
Permanent Supportive Housing (PSH)	147	117	99	140	153	13	9%
Rapid Re-Housing (RRH)	--	--	--	18	24	6	33%
Other Permanent Housing (OPH)	--	30	30	15	15	0	-0%

**Award Summary**

	2016	2017	2018	2019	2020	2019-20 Change	% Change
<b>Continuum of Care (CoC)</b>	\$438,717	\$415,203	\$402,569	\$402,128	\$420,043	\$17,915	4%
<b>ESG (IL state recipient - no direct funding)</b>	\$4,713,992	\$5,594,009	\$4,612,743	\$4,935,064	\$5,266,395	\$331,331	7%