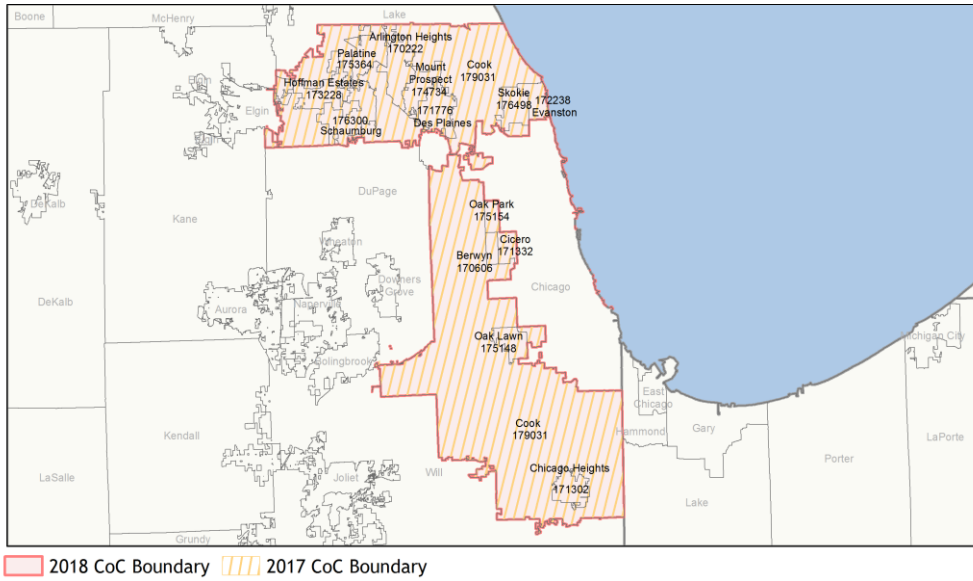
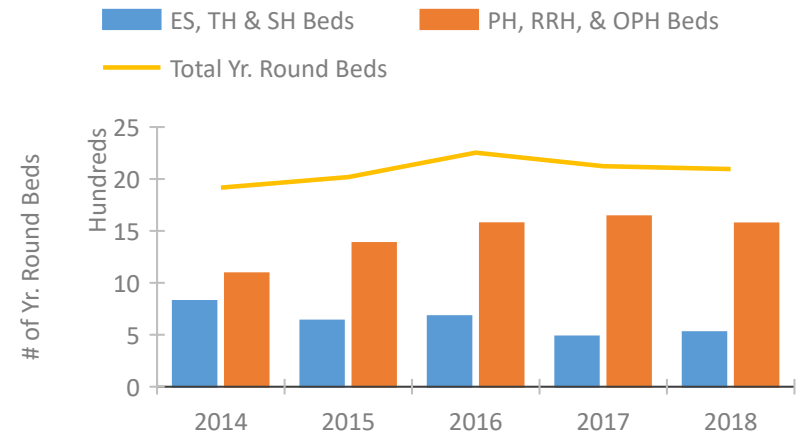


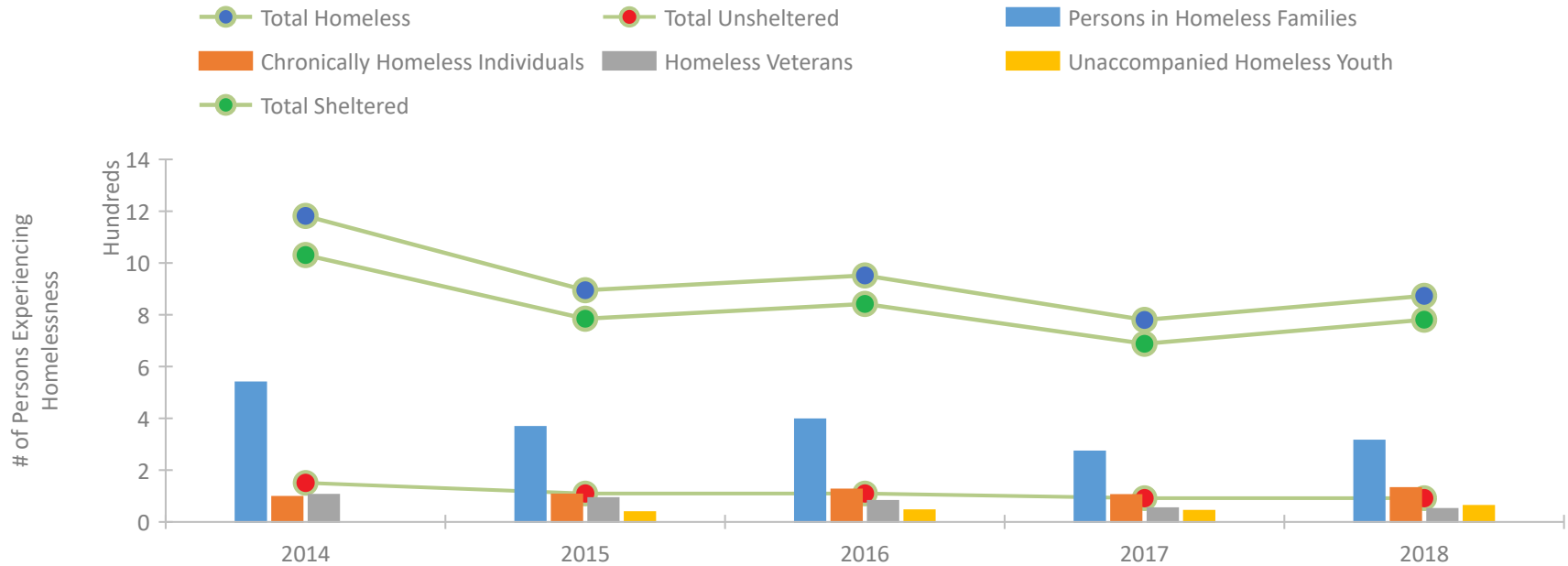
CoC Performance Profile IL-511 Cook County CoC



Housing Inventory Count by Program Type

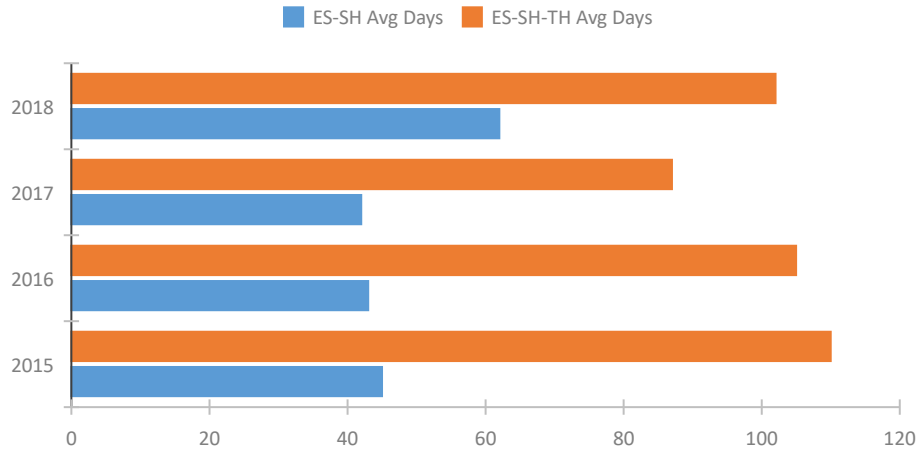


Homeless Population – Point-in-Time (PIT) Count

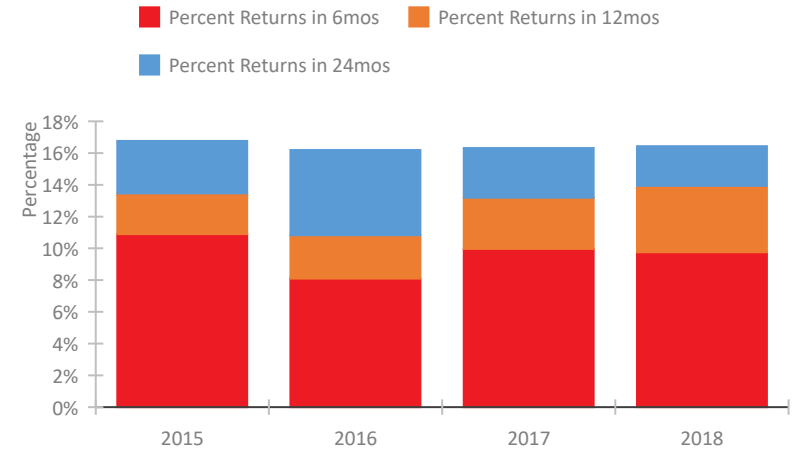


CoC Performance Profile IL-511 Cook County CoC

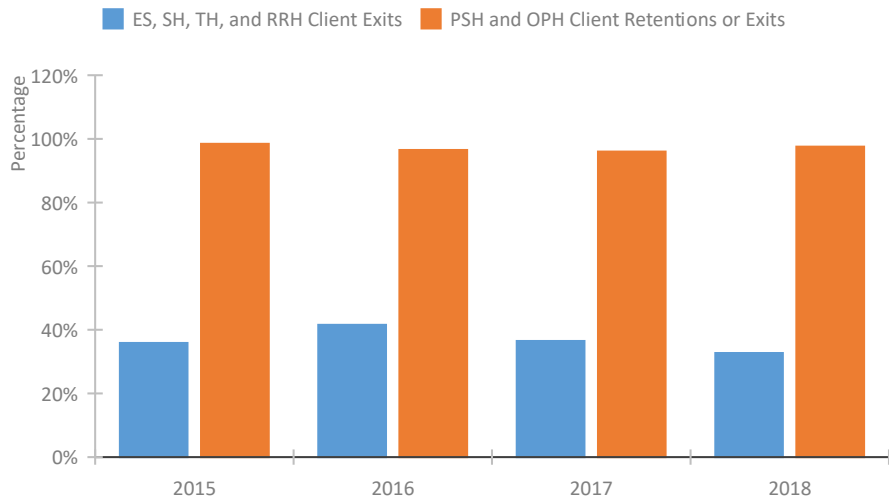
Length of Time Homeless



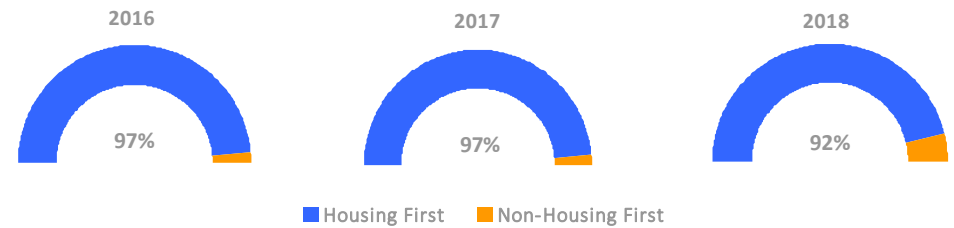
Returns to Homelessness Over Time



Exits to Permanent Housing by Program Type



Proportion of Housing First Projects by Year



Number of Projects by Year

	2016	2017	2018
Housing First Projects	35	36	35
Non-Housing First Projects	1	1	3

Data Summary: IL-511 Cook County CoC

Point-In-Time Count Summary

	2014	2015	2016	2017	2018	2017-18 Change	% Change
Number of Sheltered Persons in Families	534	367	396	269	311	42	16%
Number of Unsheltered Persons in Families	5	0	0	3	3	0	0%
Number of Sheltered Individuals	497	418	446	419	470	51	12%
Number of Unsheltered Individuals	146	110	110	89	89	0	0%
Total Homeless Persons	1,182	895	952	780	873	93	12%
Number of Sheltered Families	176	126	136	92	104	12	13%
Number of Unsheltered Families	1	0	0	1	1	0	0%
Number of Total Families	177	126	136	93	105	12	13%
Sheltered Chronically Homeless Individuals	67	81	100	81	108	27	33%
Unsheltered Chronically Homeless Individuals	30	25	25	23	23	0	0%
Total Chronically Homeless Individuals	97	106	125	104	131	27	26%
Sheltered Veterans	84	85	74	50	47	-3	-6%
Unsheltered Veterans	21	7	7	3	3	0	0%
Total Veterans	105	92	81	53	50	-3	-6%
Sheltered Unaccompanied Youth (up to 24)	--	31	38	40	59	19	48%
Unsheltered Unaccompanied Youth (up to 24)	--	7	7	3	3	0	0%
Total Unaccompanied Youth (up to 24)	--	38	45	43	62	19	44%

System Performance Measures Summary

	2014	2015	2016	2017	2018	2017-18 Change	% Change
Average Length of Time Homeless (days)	N/A	110	105	87	102	15	17.2%
Rate People Return to Homelessness in 6 Months	N/A	10.9%	8.1%	10.0%	9.8%	-0.2%	N/A
Number of People who are Homeless for the First Time	N/A	2166	2171	2208	1583	-625	-28.3%
Rate People Exit from ES, SH, TH, and RRH to PH	N/A	35.9%	41.6%	36.5%	32.7%	-3.8%	N/A
Rate People in PSH and OPH Retain or Exit to PH	N/A	98.4%	96.5%	96.0%	97.5%	1.5%	N/A

Housing Inventory Count Summary

	2014	2015	2016	2017	2018	2017-18 Change	% Change
Emergency Shelter (ES)	205	206	222	174	195	21	12%
Safe Haven (SH)	15	15	29	28	29	1	4%
Transitional Housing (TH)	606	415	428	281	300	19	7%
Permanent Supportive Housing (PSH)	979	1,104	1,255	1,349	1,312	-37	-3%
Rapid Re-Housing (RRH)	107	274	309	284	250	-34	-12%
Other Permanent Housing (OPH)	5	5	10	8	10	2	25%

Award Summary

	2014	2015	2016	2017	2018	2017-18 Change	% Change
Continuum of Care (CoC)	\$11,712,428	\$11,372,915	\$11,770,688	\$12,080,398	\$13,107,890	\$1,027,492	9%
Emergency Solutions Grants (ESG)	\$891,970	\$1,237,070	\$1,232,772	\$1,754,197	\$1,259,328	(\$494,869)	-28%
Youth Homelessness Demonstration Program (YHDP)	N/A	N/A	--	--	\$6,078,027	--	--