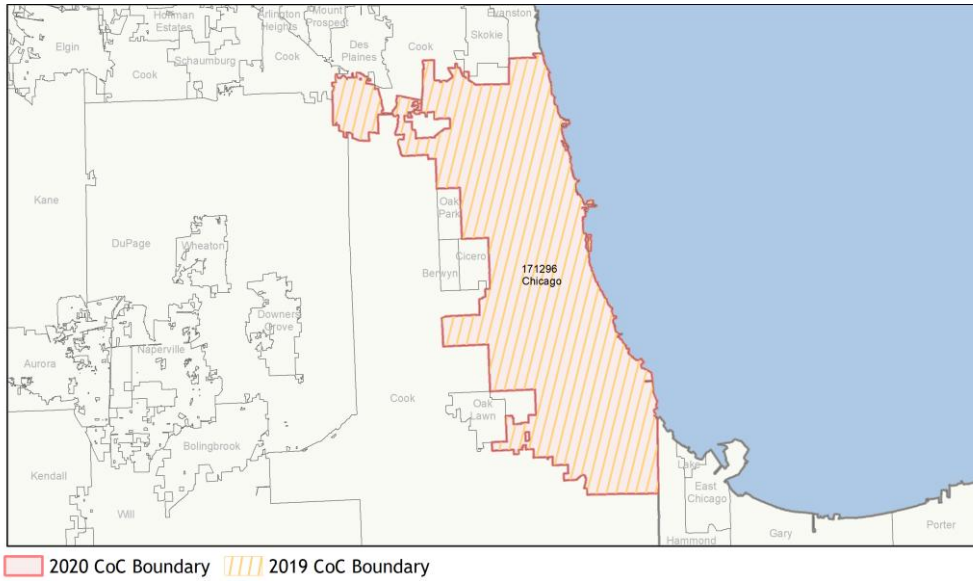
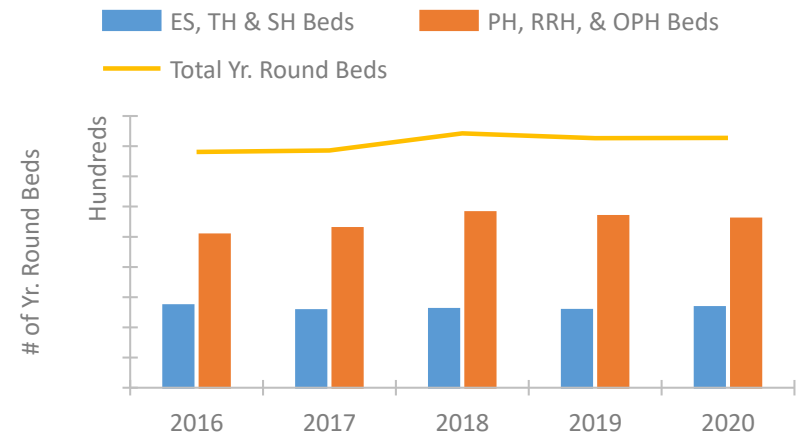


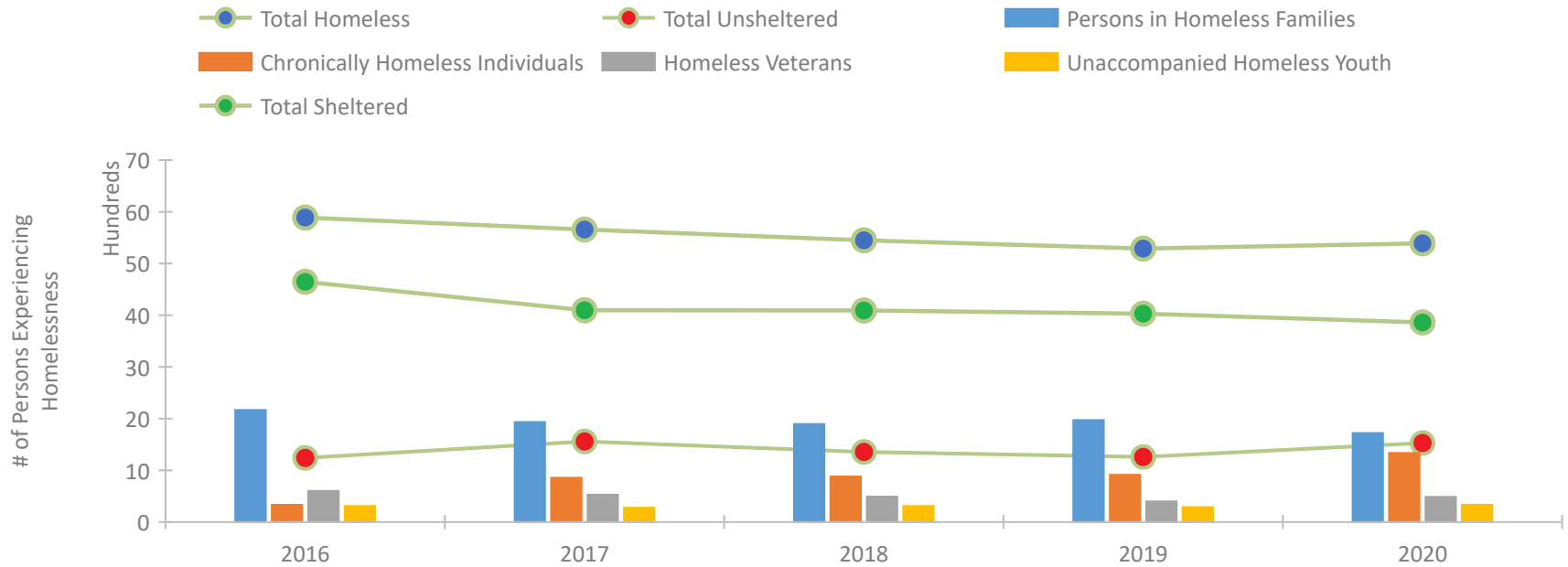
CoC Performance Profile IL-510 Chicago CoC



Housing Inventory Count by Program Type

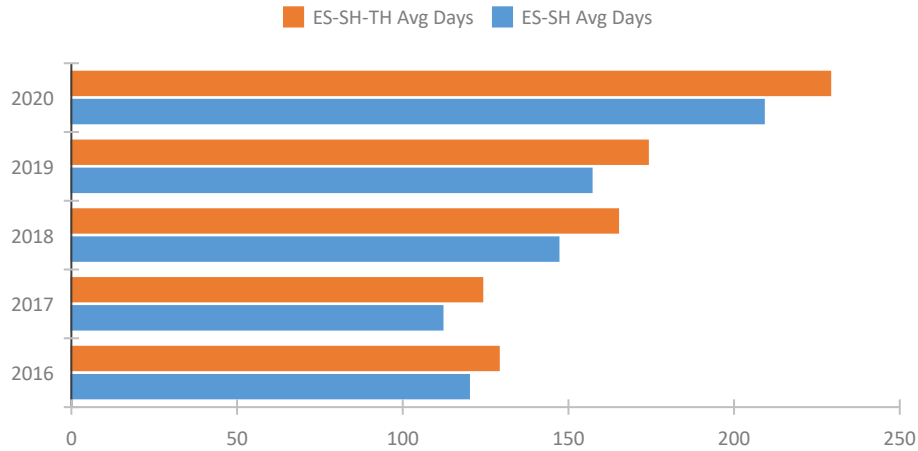


Homeless Population – Point-in-Time (PIT) Count

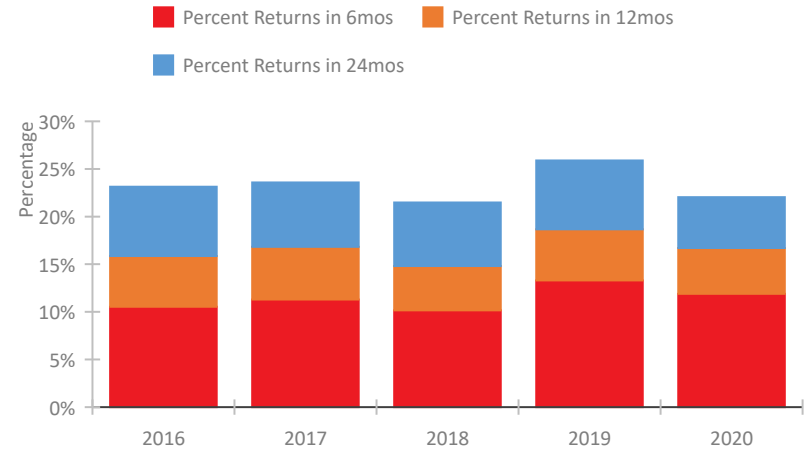


CoC Performance Profile IL-510 Chicago CoC

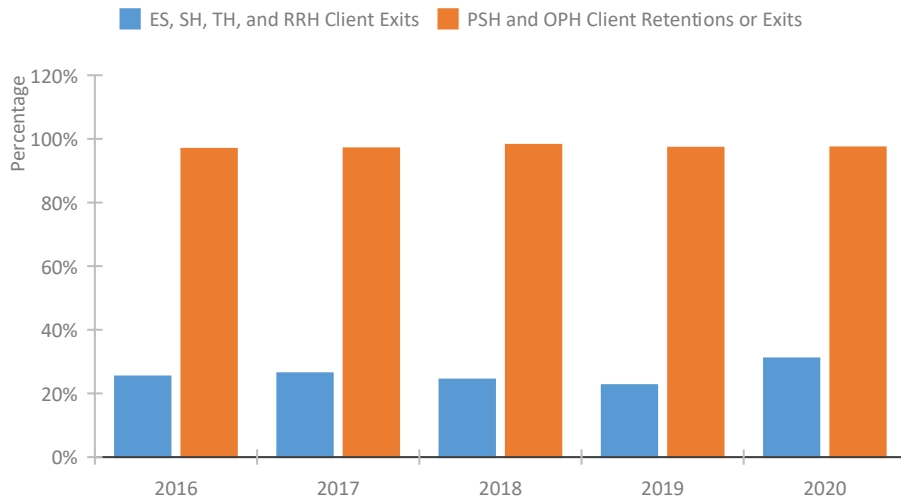
Length of Time Homeless



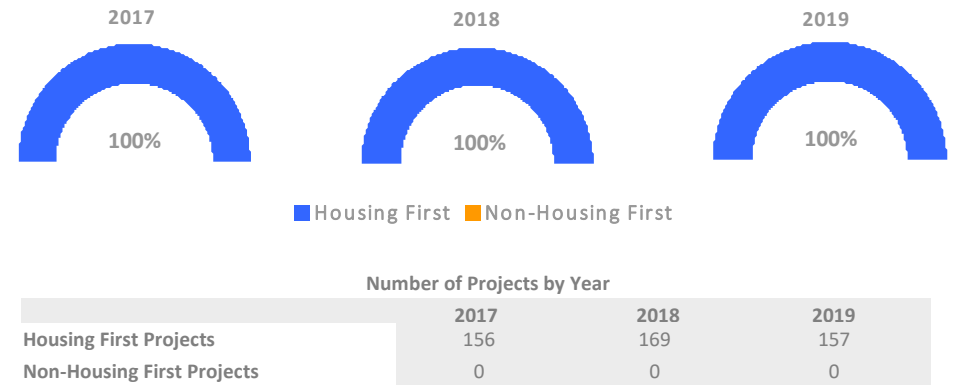
Returns to Homelessness Over Time



Exits to Permanent Housing by Program Type



Proportion of Housing First Projects by Year*



*In 2020 HUD awarded renewal projects noncompetitively, therefore no new data was collected and Housing First data remains the same from 2019 to 2020.

Data Summary: IL-510 Chicago CoC

Point-In-Time Count Summary

	2016	2017	2018	2019	2020	2019-20 Change	% Change
Number of Sheltered Persons in Families	2,158	1,931	1,890	1,966	1,700	-266	-14%
Number of Unsheltered Persons in Families	10	2	7	6	22	16	267%
Number of Sheltered Individuals	2,488	2,165	2,203	2,064	2,161	97	5%
Number of Unsheltered Individuals	1,233	1,559	1,350	1,254	1,507	253	20%
Total Homeless Persons	5,889	5,657	5,450	5,290	5,390	100	2%
Number of Sheltered Families	661	570	558	559	499	-60	-11%
Number of Unsheltered Families	2	1	3	2	7	5	250%
Number of Total Families	663	571	561	561	506	-55	-10%
Sheltered Chronically Homeless Individuals	110	288	348	607	491	-116	-19%
Unsheltered Chronically Homeless Individuals	224	570	533	307	846	539	176%
Total Chronically Homeless Individuals	334	858	881	914	1,337	423	46%
Sheltered Veterans	399	283	296	279	286	7	3%
Unsheltered Veterans	202	245	198	120	201	81	67%
Total Veterans	601	528	494	399	487	88	22%
Sheltered Unaccompanied Youth (up to 24)	281	213	269	256	244	-12	-5%
Unsheltered Unaccompanied Youth (up to 24)	28	64	41	33	91	58	176%
Total Unaccompanied Youth (up to 24)	309	277	310	289	335	46	16%

System Performance Measures Summary

	2016	2017	2018	2018	2020	2019-20 Change	% Change
Average Length of Time Homeless (days)	129	124	165	174	229	55	31.6%
Rate People Return to Homelessness in 6 Months	10.5%	11.3%	10.2%	13.3%	11.9%	-1.4%	N/A
Number of People who are Homeless for the First Time	14,188	13,206	11,259	11,257	5,793	-5,464	-48.5%
Rate People Exit from ES, SH, TH, and RRH to PH	25.3%	26.3%	24.3%	22.6%	31.0%	8.4%	N/A
Rate People in PSH and OPH Retain or Exit to PH	96.8%	97.0%	98.1%	97.2%	97.3%	0.1%	N/A

Housing Inventory Count Summary

	2016	2017	2018	2019	2020	2019-20 Change	% Change
Emergency Shelter (ES)	1,687	1,915	3,788	3,748	3,948	200	5%
Safe Haven (SH)	41	41	41	41	40	-1	-2%
Transitional Housing (TH)	3,741	3,182	1,391	1,366	1,351	-15	-1%
Permanent Supportive Housing (PSH)	9,393	9,245	10,255	9,970	9,337	-633	-6%
Rapid Re-Housing (RRH)	595	1,107	1,121	1,172	1,144	-28	-2%
Other Permanent Housing (OPH)	166	231	257	233	729	496	213%

Award Summary

	2016	2017	2018	2019	2020	2019-20 Change	% Change
Continuum of Care (CoC)	\$64,921,879	\$68,304,040	\$73,193,688	\$76,142,315	\$79,527,971	\$3,385,656	4%
Emergency Solutions Grants (ESG)	\$6,524,439	\$6,501,824	\$6,490,003	\$6,695,179	\$6,876,768	\$181,589	3%