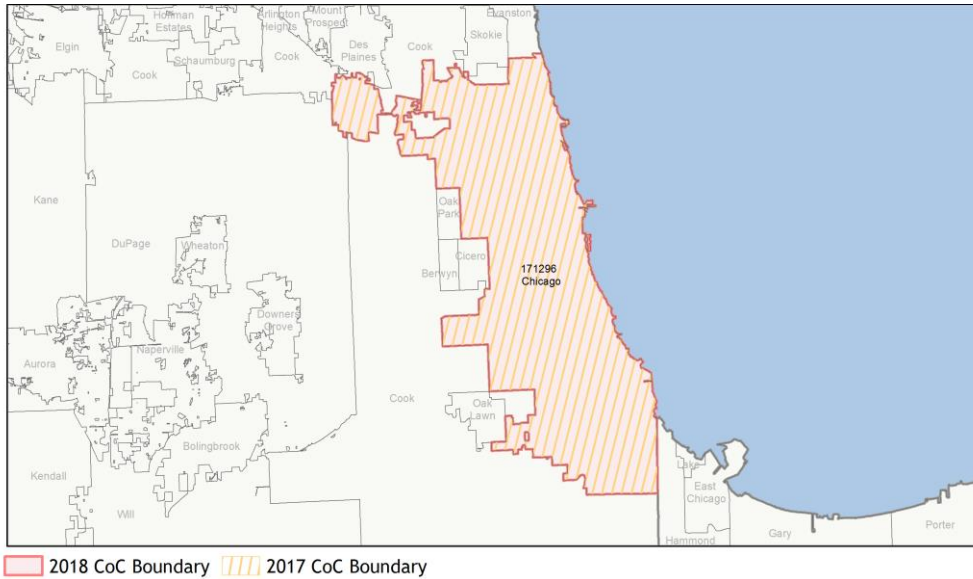
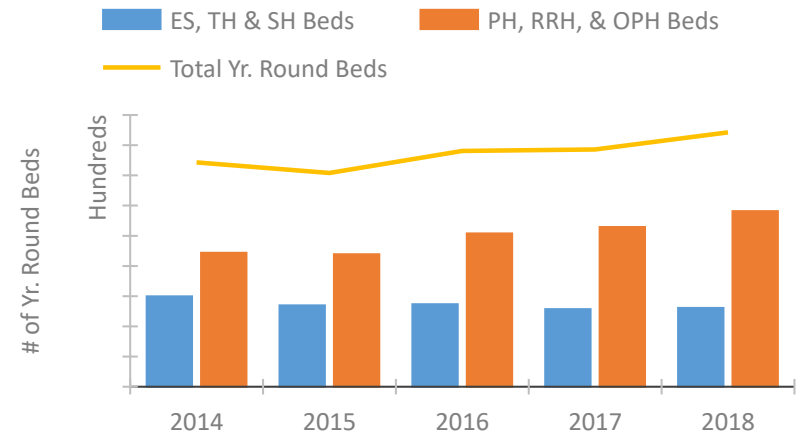


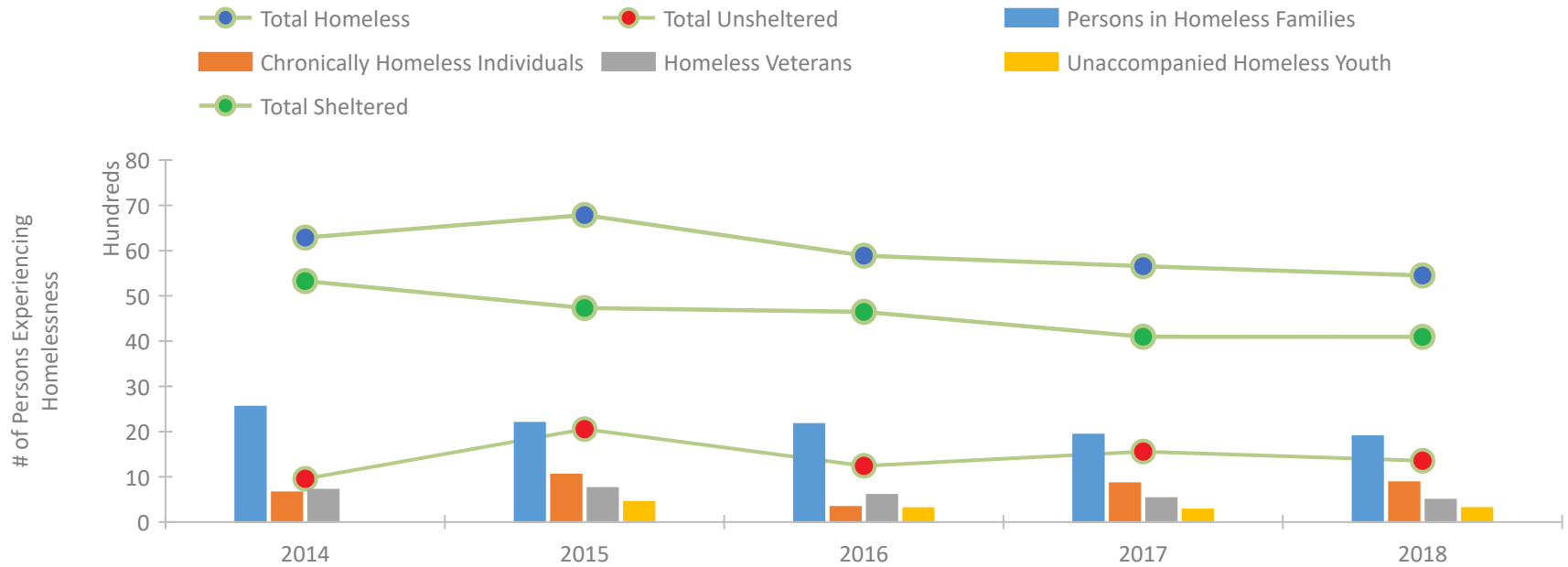
## CoC Performance Profile IL-510 Chicago CoC



### Housing Inventory Count by Program Type

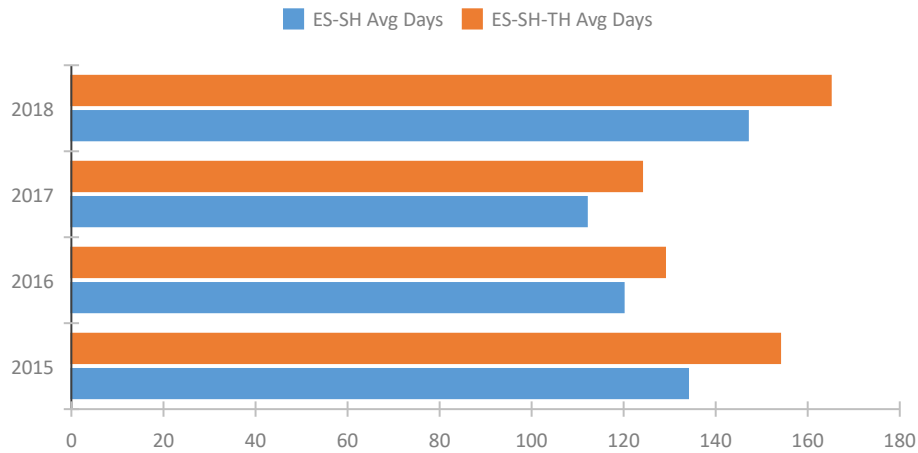


### Homeless Population – Point-in-Time (PIT) Count

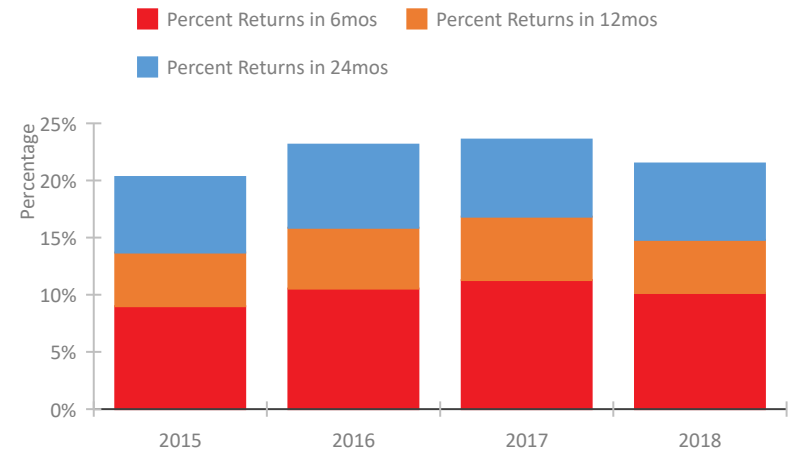


## CoC Performance Profile IL-510 Chicago CoC

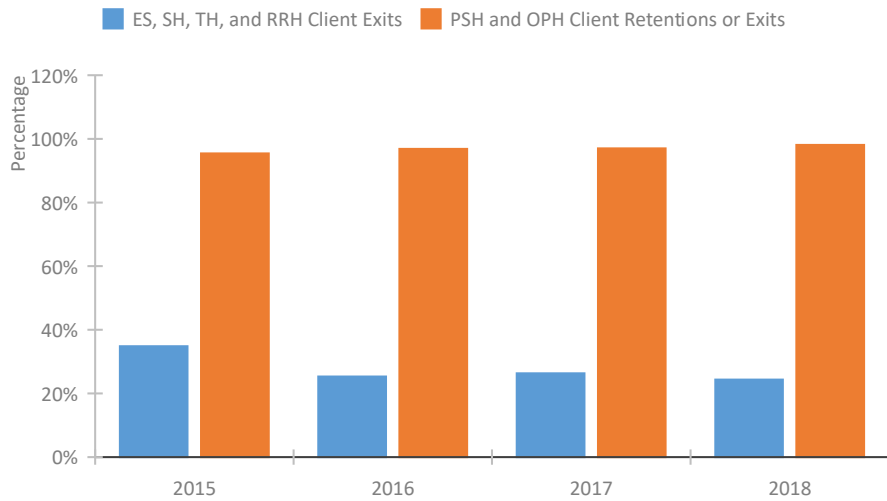
### Length of Time Homeless



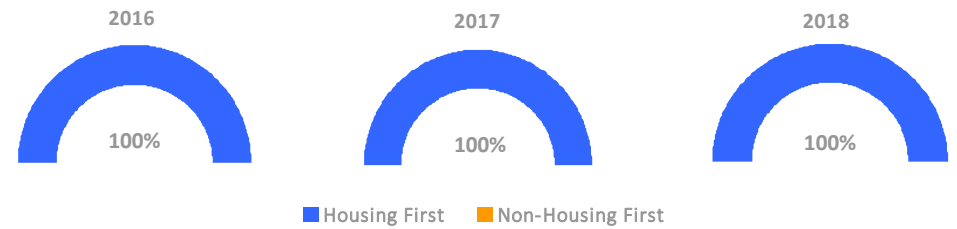
### Returns to Homelessness Over Time



### Exits to Permanent Housing by Program Type



### Proportion of Housing First Projects by Year



### Number of Projects by Year

	2016	2017	2018
Housing First Projects	161	156	169
Non-Housing First Projects	0	0	0

## Data Summary: IL-510 Chicago CoC

### Point-In-Time Count Summary

	2014	2015	2016	2017	2018	2017-18 Change	% Change
Number of Sheltered Persons in Families	2,545	2,173	2,158	1,931	1,890	-41	-2%
Number of Unsheltered Persons in Families	4	21	10	2	7	5	250%
Number of Sheltered Individuals	2,783	2,558	2,488	2,165	2,203	38	2%
Number of Unsheltered Individuals	955	2,034	1,233	1,559	1,350	-209	-13%
<b>Total Homeless Persons</b>	<b>6,287</b>	<b>6,786</b>	<b>5,889</b>	<b>5,657</b>	<b>5,450</b>	<b>-207</b>	<b>-4%</b>
Number of Sheltered Families	781	677	661	570	558	-12	-2%
Number of Unsheltered Families	2	7	2	1	3	2	200%
<b>Number of Total Families</b>	<b>783</b>	<b>684</b>	<b>663</b>	<b>571</b>	<b>561</b>	<b>-10</b>	<b>-2%</b>
Sheltered Chronically Homeless Individuals	421	373	110	288	348	60	21%
Unsheltered Chronically Homeless Individuals	234	677	224	570	533	-37	-6%
<b>Total Chronically Homeless Individuals</b>	<b>655</b>	<b>1,050</b>	<b>334</b>	<b>858</b>	<b>881</b>	<b>23</b>	<b>3%</b>
Sheltered Veterans	458	346	399	283	296	13	5%
Unsheltered Veterans	256	406	202	245	198	-47	-19%
<b>Total Veterans</b>	<b>714</b>	<b>752</b>	<b>601</b>	<b>528</b>	<b>494</b>	<b>-34</b>	<b>-6%</b>
Sheltered Unaccompanied Youth (up to 24)	--	325	281	213	269	56	26%
Unsheltered Unaccompanied Youth (up to 24)	--	121	28	64	41	-23	-36%
<b>Total Unaccompanied Youth (up to 24)</b>	<b>--</b>	<b>446</b>	<b>309</b>	<b>277</b>	<b>310</b>	<b>33</b>	<b>12%</b>

### System Performance Measures Summary

	2014	2015	2016	2017	2018	2017-18 Change	% Change
Average Length of Time Homeless (days)	N/A	154	129	124	165	41	33.1%
Rate People Return to Homelessness in 6 Months	N/A	9.0%	10.5%	11.3%	10.2%	-1.1%	N/A
Number of People who are Homeless for the First Time	N/A	12417	14188	13206	11259	-1,947	-14.7%
Rate People Exit from ES, SH, TH, and RRH to PH	N/A	34.9%	25.3%	26.3%	24.3%	-2%	N/A
Rate People in PSH and OPH Retain or Exit to PH	N/A	95.4%	96.8%	97.0%	98.1%	1.1%	N/A

### Housing Inventory Count Summary

	2014	2015	2016	2017	2018	2017-18 Change	% Change
Emergency Shelter (ES)	2,048	1,632	1,687	1,915	3,788	1,873	98%
Safe Haven (SH)	41	41	41	41	41	0	0%
Transitional Housing (TH)	3,902	3,717	3,741	3,182	1,391	-1,791	-56%
Permanent Supportive Housing (PSH)	8,406	7,959	9,393	9,245	10,255	1,010	11%
Rapid Re-Housing (RRH)	447	611	595	1,107	1,121	14	1%
Other Permanent Housing (OPH)	17	205	166	231	257	26	11%

### Award Summary

	2014	2015	2016	2017	2018	2017-18 Change	% Change
<b>Continuum of Care (CoC)</b>	\$59,601,053	\$63,499,383	\$64,921,879	\$68,304,040	\$73,193,688	\$4,889,648	7%
<b>Emergency Solutions Grants (ESG)</b>	\$5,998,236	\$6,490,485	\$6,524,439	\$6,501,824	\$6,490,003	(\$11,821)	0%