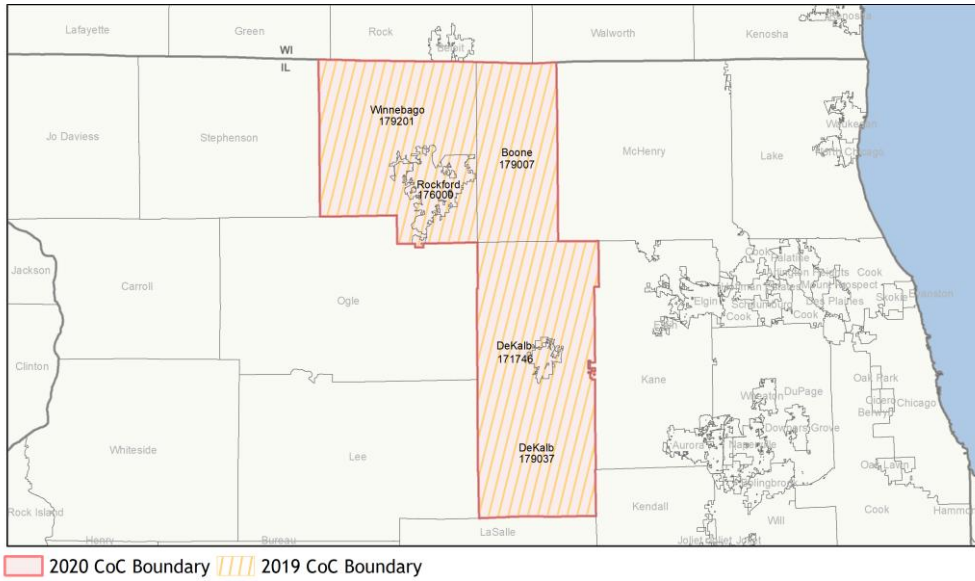
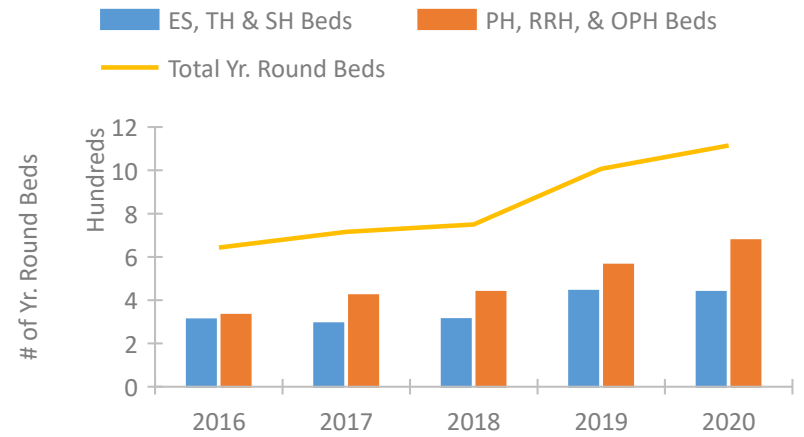


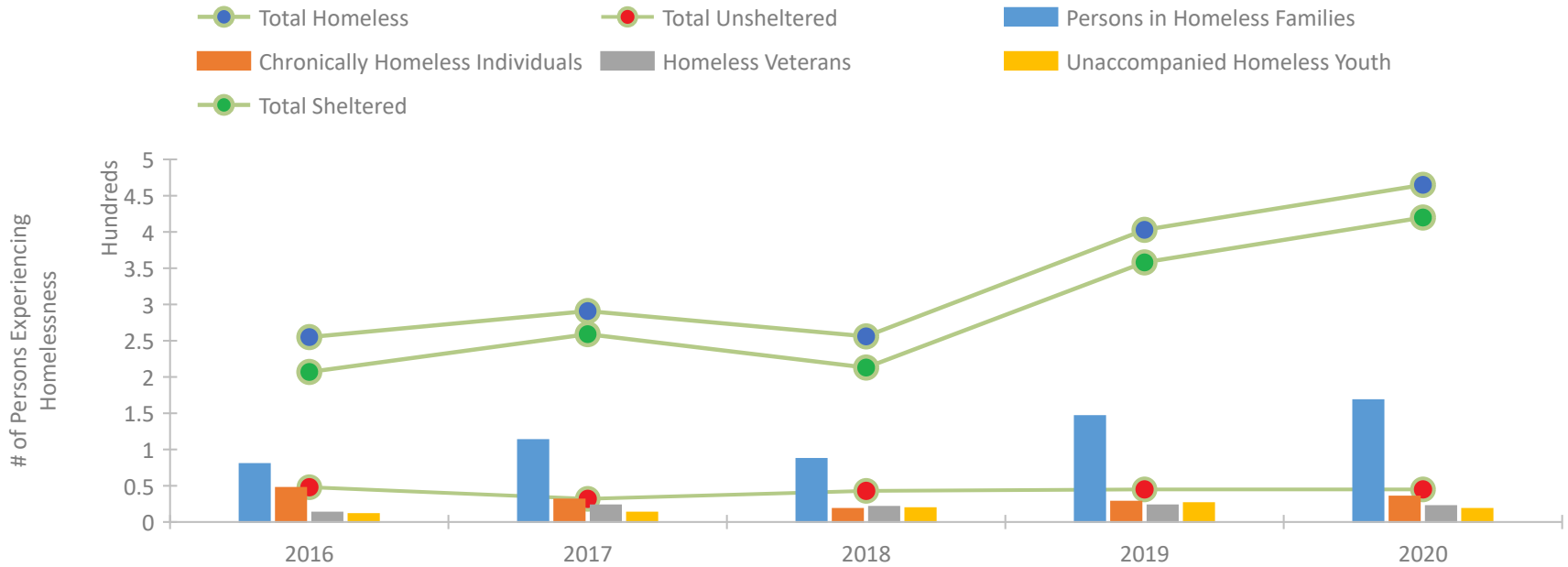
## CoC Performance Profile IL-501 Rockford/DeKalb, Winnebago, Boone Counties CoC



### Housing Inventory Count by Program Type

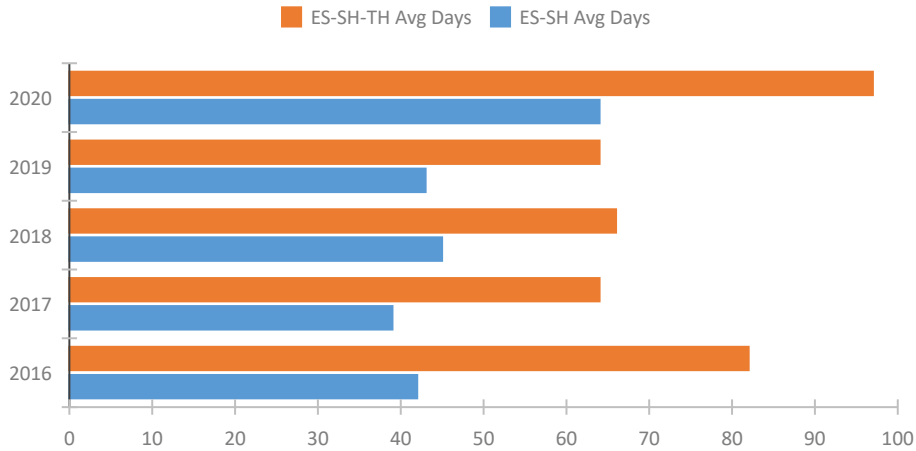


### Homeless Population – Point-in-Time (PIT) Count

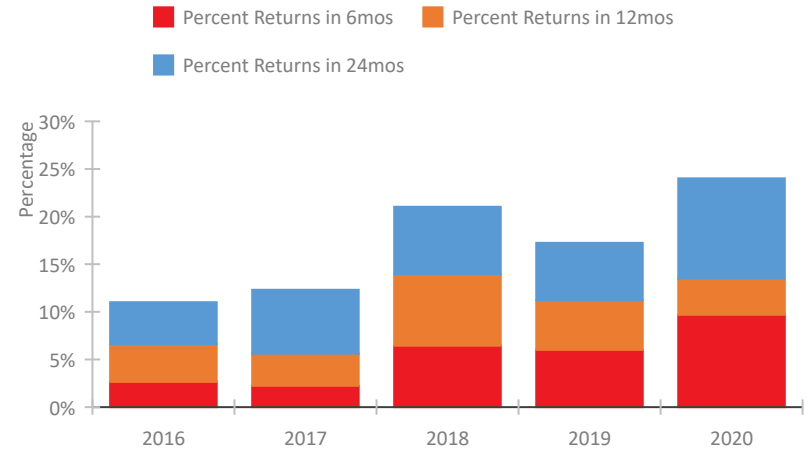


## CoC Performance Profile IL-501 Rockford/DeKalb, Winnebago, Boone Counties CoC

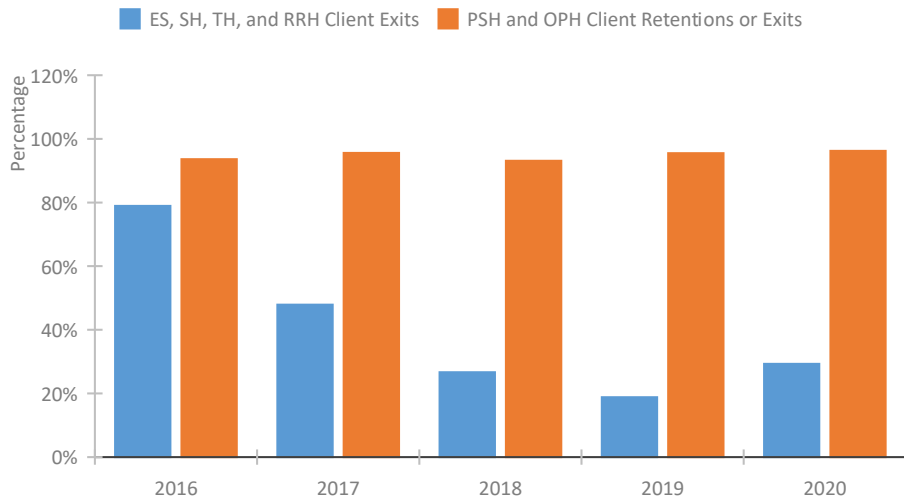
### Length of Time Homeless



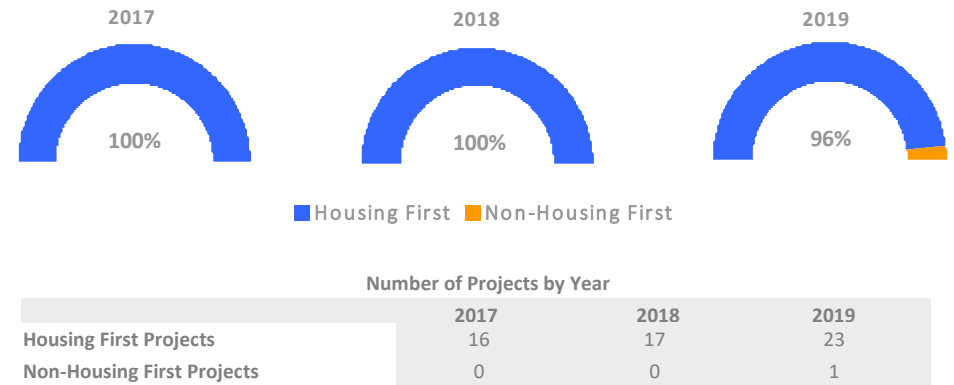
### Returns to Homelessness Over Time



### Exits to Permanent Housing by Program Type



### Proportion of Housing First Projects by Year\*



\*In 2020 HUD awarded renewal projects noncompetitively, therefore no new data was collected and Housing First data remains the same from 2019 to 2020.

**Data Summary: IL-501 Rockford/DeKalb, Winnebago, Boone Counties CoC**

**Point-In-Time Count Summary**

	2016	2017	2018	2019	2020	2019-20 Change	% Change
Number of Sheltered Persons in Families	80	113	87	146	166	20	14%
Number of Unsheltered Persons in Families	0	0	0	0	2	2	100%
Number of Sheltered Individuals	127	146	126	212	254	42	20%
Number of Unsheltered Individuals	48	32	43	45	43	-2	-4%
<b>Total Homeless Persons</b>	<b>255</b>	<b>291</b>	<b>256</b>	<b>403</b>	<b>465</b>	<b>62</b>	<b>15%</b>
Number of Sheltered Families	23	38	30	50	52	2	4%
Number of Unsheltered Families	0	0	0	0	1	1	100%
<b>Number of Total Families</b>	<b>23</b>	<b>38</b>	<b>30</b>	<b>50</b>	<b>53</b>	<b>3</b>	<b>6%</b>
Sheltered Chronically Homeless Individuals	38	14	0	18	24	6	33%
Unsheltered Chronically Homeless Individuals	9	17	18	10	11	1	10%
<b>Total Chronically Homeless Individuals</b>	<b>47</b>	<b>31</b>	<b>18</b>	<b>28</b>	<b>35</b>	<b>7</b>	<b>25%</b>
Sheltered Veterans	6	20	16	20	20	0	-0%
Unsheltered Veterans	7	3	5	3	2	-1	-33%
<b>Total Veterans</b>	<b>13</b>	<b>23</b>	<b>21</b>	<b>23</b>	<b>22</b>	<b>-1</b>	<b>-4%</b>
Sheltered Unaccompanied Youth (up to 24)	9	10	13	19	18	-1	-5%
Unsheltered Unaccompanied Youth (up to 24)	2	3	6	7	0	-7	-100%
<b>Total Unaccompanied Youth (up to 24)</b>	<b>11</b>	<b>13</b>	<b>19</b>	<b>26</b>	<b>18</b>	<b>-8</b>	<b>-31%</b>

**System Performance Measures Summary**

	2016	2017	2018	2018	2020	2019-20 Change	% Change
Average Length of Time Homeless (days)	82	64	66	64	97	33	51.6%
Rate People Return to Homelessness in 6 Months	2.6%	2.2%	6.4%	6.0%	9.7%	3.7%	N/A
Number of People who are Homeless for the First Time	1,027	1,219	1,399	1,458	958	-500	-34.3%
Rate People Exit from ES, SH, TH, and RRH to PH	78.9%	47.9%	26.7%	18.8%	29.3%	10.5%	N/A
Rate People in PSH and OPH Retain or Exit to PH	93.6%	95.6%	93.1%	95.5%	96.2%	0.7%	N/A

**Housing Inventory Count Summary**

	2016	2017	2018	2019	2020	2019-20 Change	% Change
Emergency Shelter (ES)	215	206	210	307	331	24	8%
Transitional Housing (TH)	96	87	102	136	107	-29	-21%
Permanent Supportive Housing (PSH)	324	346	348	468	484	16	3%
Rapid Re-Housing (RRH)	8	77	90	96	193	97	101%

**Award Summary**

	2016	2017	2018	2019	2020	2019-20 Change	% Change
<b>Continuum of Care (CoC)</b>	\$1,528,983	\$1,509,896	\$1,524,907	\$2,200,682	\$2,265,544	\$64,862	3%
<b>Emergency Solutions Grants (ESG)</b>	\$185,376	\$182,521	\$178,770	\$180,781	\$184,641	\$3,860	2%