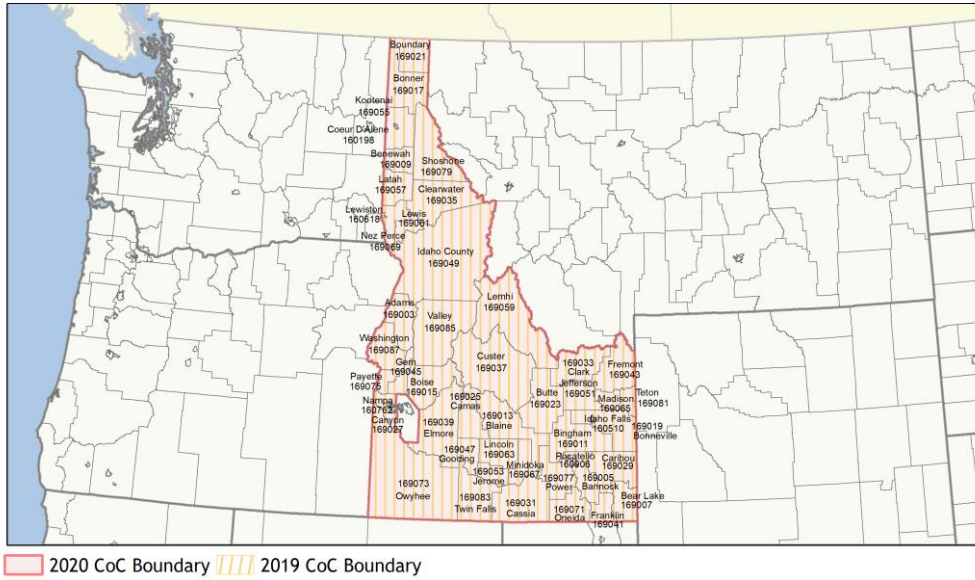
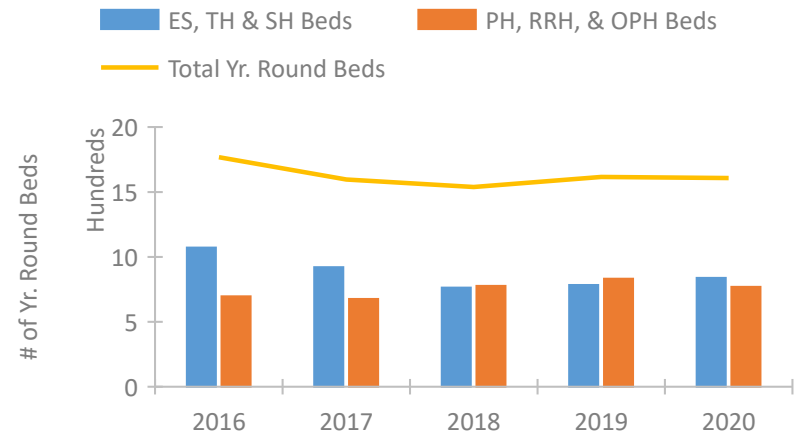


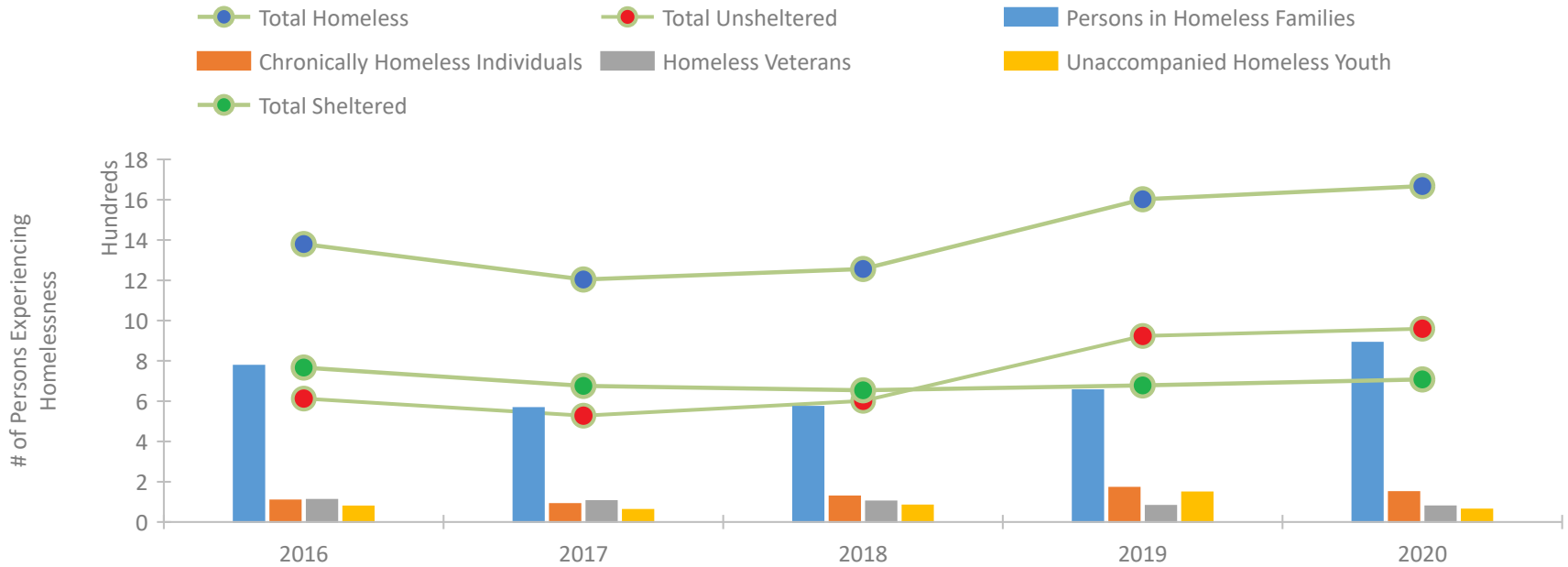
## CoC Performance Profile ID-501 Idaho Balance of State CoC



### Housing Inventory Count by Program Type

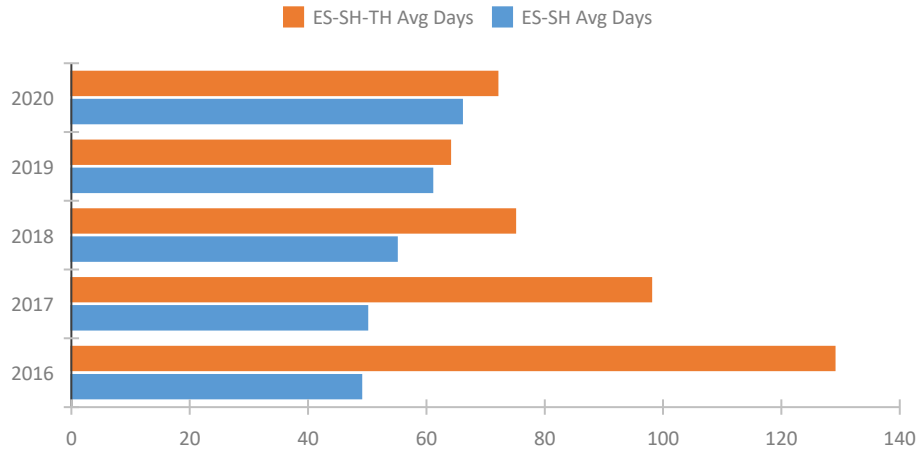


### Homeless Population – Point-in-Time (PIT) Count

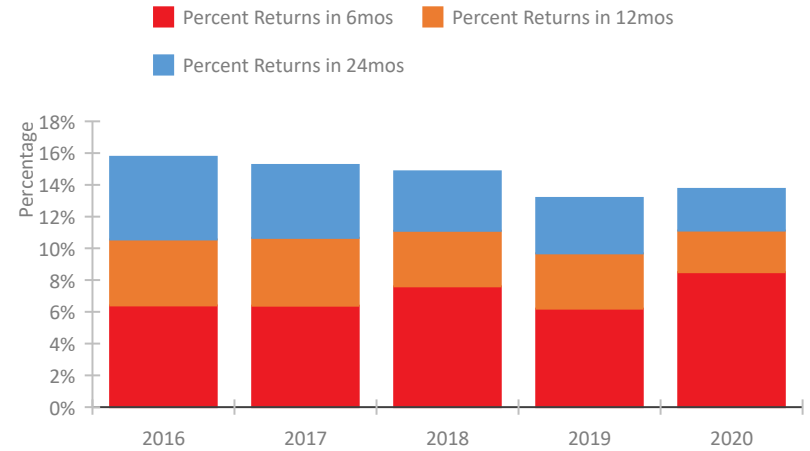


## CoC Performance Profile ID-501 Idaho Balance of State CoC

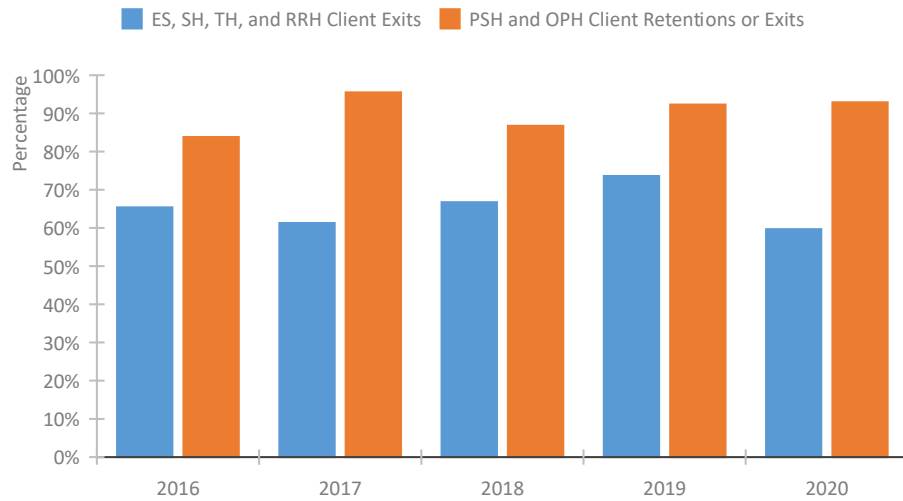
### Length of Time Homeless



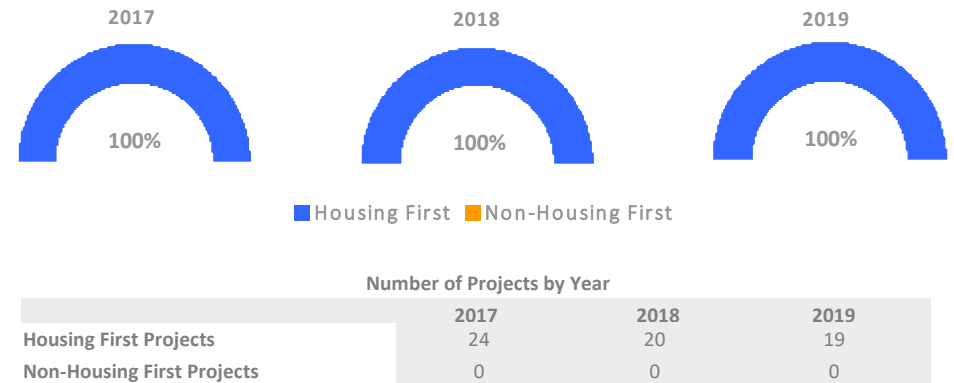
### Returns to Homelessness Over Time



### Exits to Permanent Housing by Program Type



### Proportion of Housing First Projects by Year\*



\*In 2020 HUD awarded renewal projects noncompetitively, therefore no new data was collected and Housing First data remains the same from 2019 to 2020.

## Data Summary: ID-501 Idaho Balance of State CoC

### Point-In-Time Count Summary

	2016	2017	2018	2019	2020	2019-20 Change	% Change
Number of Sheltered Persons in Families	449	393	374	354	410	56	16%
Number of Unsheltered Persons in Families	327	173	198	300	480	180	60%
Number of Sheltered Individuals	318	283	280	324	298	-26	-8%
Number of Unsheltered Individuals	286	355	404	624	480	-144	-23%
<b>Total Homeless Persons</b>	<b>1,380</b>	<b>1,204</b>	<b>1,256</b>	<b>1,602</b>	<b>1,668</b>	<b>66</b>	<b>4%</b>
Number of Sheltered Families	144	125	114	113	127	14	12%
Number of Unsheltered Families	91	40	51	82	115	33	40%
<b>Number of Total Families</b>	<b>235</b>	<b>165</b>	<b>165</b>	<b>195</b>	<b>242</b>	<b>47</b>	<b>24%</b>
Sheltered Chronically Homeless Individuals	19	12	27	34	24	-10	-29%
Unsheltered Chronically Homeless Individuals	88	77	100	136	125	-11	-8%
<b>Total Chronically Homeless Individuals</b>	<b>107</b>	<b>89</b>	<b>127</b>	<b>170</b>	<b>149</b>	<b>-21</b>	<b>-12%</b>
Sheltered Veterans	64	47	48	17	17	0	-0%
Unsheltered Veterans	46	57	54	63	61	-2	-3%
<b>Total Veterans</b>	<b>110</b>	<b>104</b>	<b>102</b>	<b>80</b>	<b>78</b>	<b>-2</b>	<b>-3%</b>
Sheltered Unaccompanied Youth (up to 24)	44	41	32	96	26	-70	-73%
Unsheltered Unaccompanied Youth (up to 24)	33	19	50	51	36	-15	-29%
<b>Total Unaccompanied Youth (up to 24)</b>	<b>77</b>	<b>60</b>	<b>82</b>	<b>147</b>	<b>62</b>	<b>-85</b>	<b>-58%</b>

### System Performance Measures Summary

	2016	2017	2018	2018	2020	2019-20 Change	% Change
Average Length of Time Homeless (days)	129	98	75	64	72	8	12.5%
Rate People Return to Homelessness in 6 Months	6.4%	6.4%	7.6%	6.2%	8.5%	2.3%	N/A
Number of People who are Homeless for the First Time	2,044	1,890	1,810	1,489	1,512	23	1.5%
Rate People Exit from ES, SH, TH, and RRH to PH	65.4%	61.3%	66.8%	73.6%	59.7%	-13.9%	N/A
Rate People in PSH and OPH Retain or Exit to PH	83.8%	95.5%	86.8%	92.3%	92.9%	0.6%	N/A

### Housing Inventory Count Summary

	2016	2017	2018	2019	2020	2019-20 Change	% Change
Emergency Shelter (ES)	546	579	501	547	590	43	8%
Transitional Housing (TH)	526	341	262	237	248	11	5%
Permanent Supportive Housing (PSH)	472	494	546	520	511	-9	-2%
Rapid Re-Housing (RRH)	224	182	230	312	258	-54	-17%

### Award Summary

	2016	2017	2018	2019	2020	2019-20 Change	% Change
<b>Continuum of Care (CoC)</b>	\$2,767,872	\$2,801,256	\$3,253,348	\$3,310,283	\$3,558,269	\$247,986	7%
<b>ESG (ID state recipient - no direct funding)</b>	\$1,021,185	\$1,555,887	\$1,031,627	\$1,074,750	\$1,110,270	\$35,520	3%