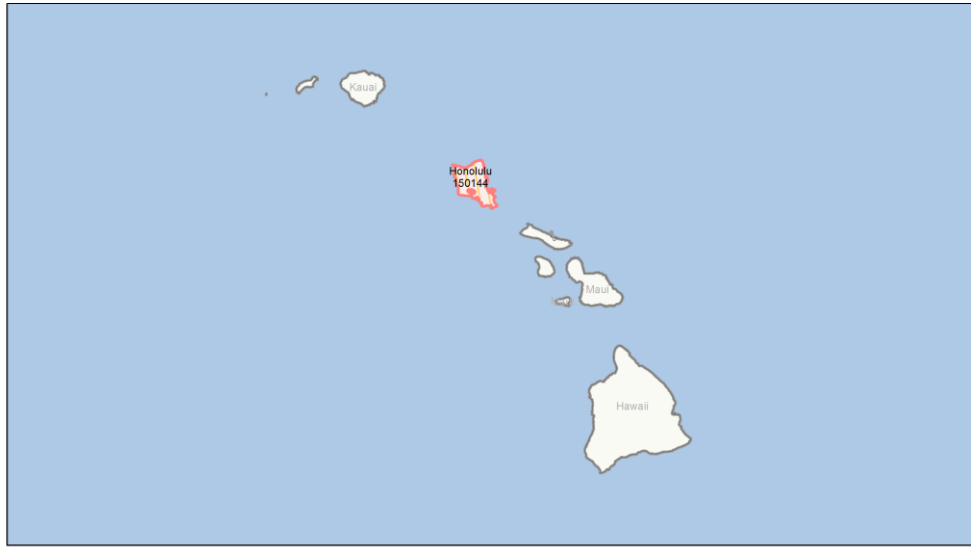
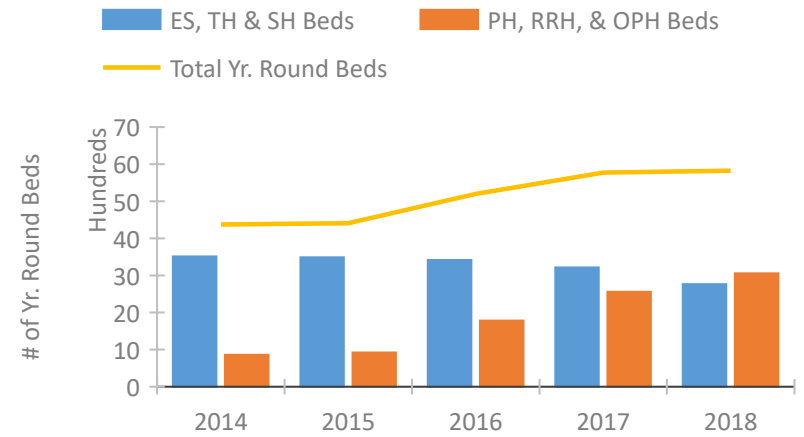


CoC Performance Profile HI-501 Honolulu City and County CoC

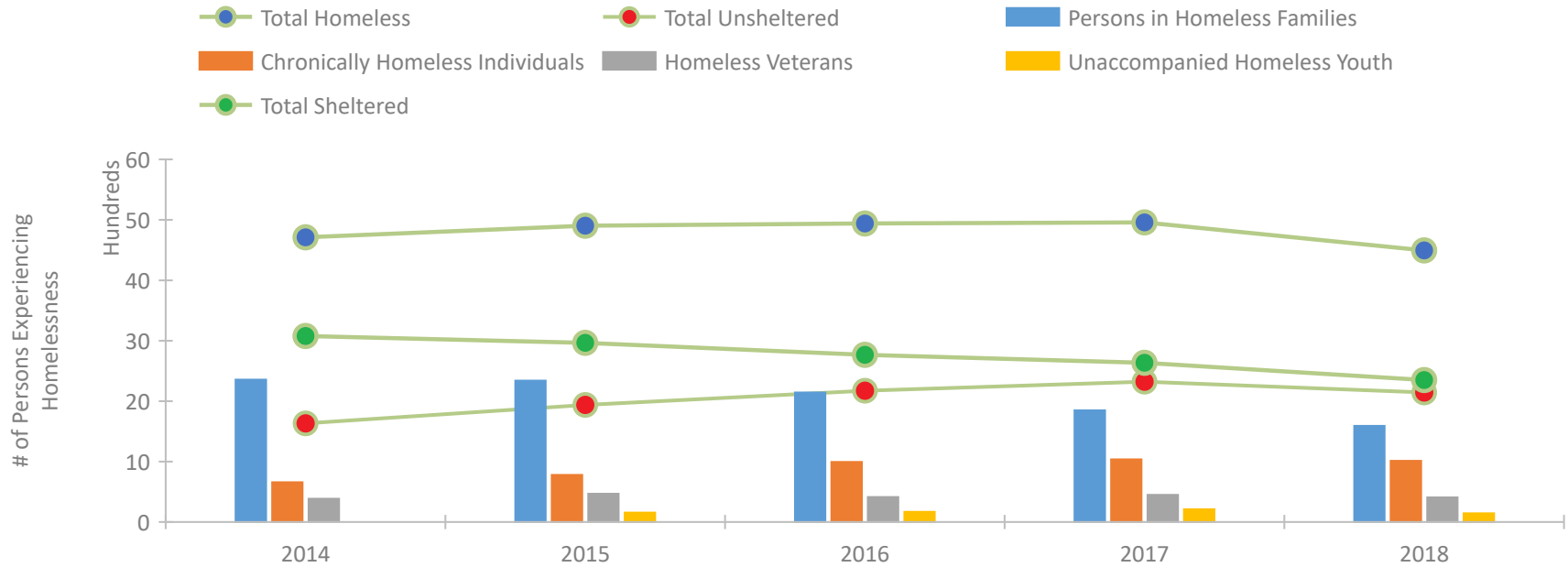


2018 CoC Boundary 2017 CoC Boundary

Housing Inventory Count by Program Type

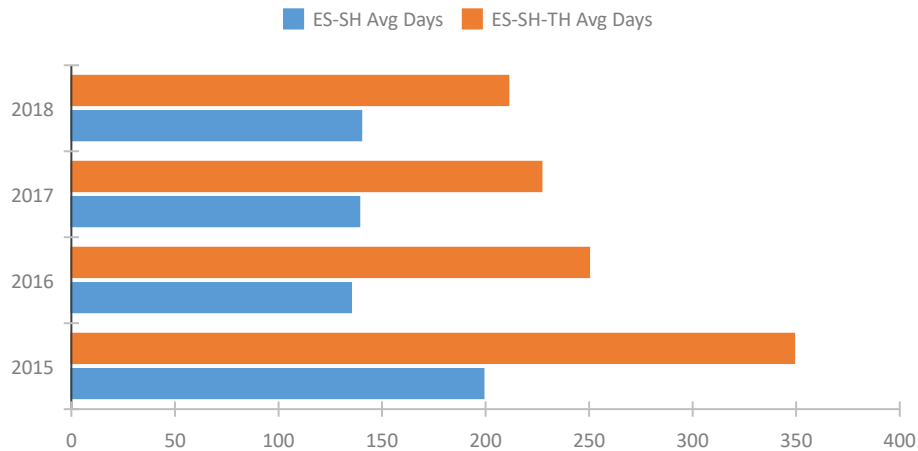


Homeless Population – Point-in-Time (PIT) Count

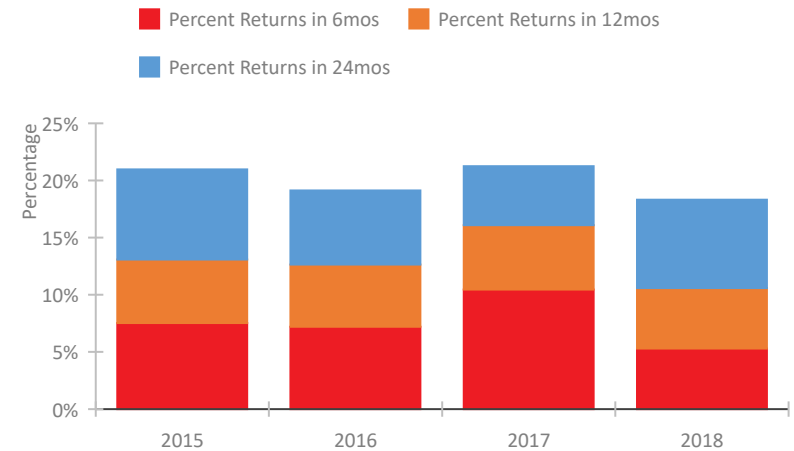


CoC Performance Profile HI-501 Honolulu City and County CoC

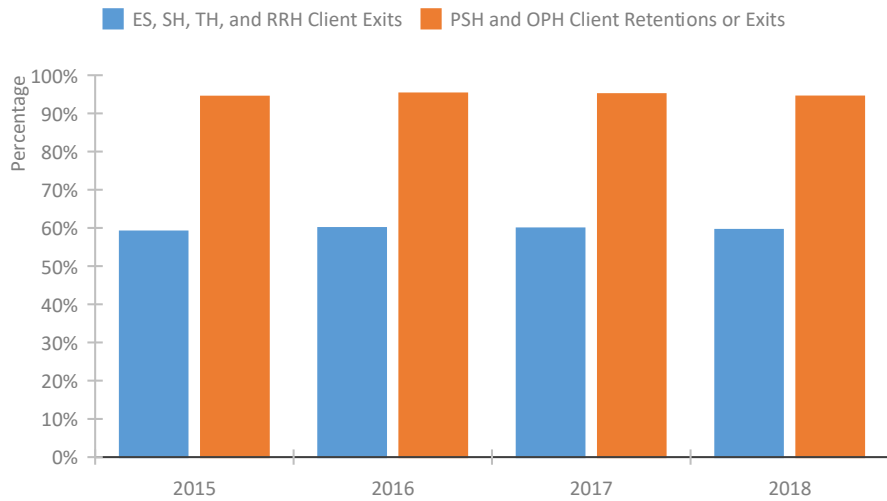
Length of Time Homeless



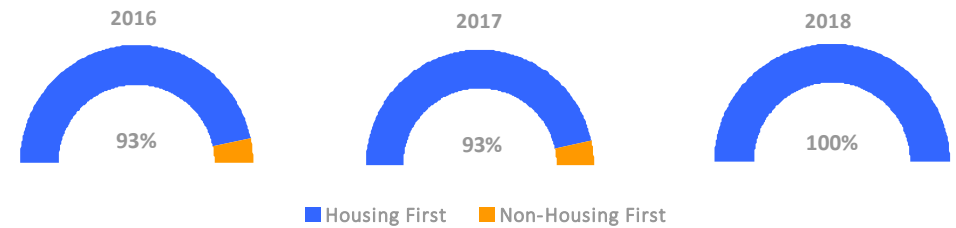
Returns to Homelessness Over Time



Exits to Permanent Housing by Program Type



Proportion of Housing First Projects by Year



Number of Projects by Year

	2016	2017	2018
Housing First Projects	14	14	17
Non-Housing First Projects	1	1	0

Data Summary: HI-501 Honolulu City and County CoC

Point-In-Time Count Summary

	2014	2015	2016	2017	2018	2017-18 Change	% Change
Number of Sheltered Persons in Families	2,168	2,055	1,844	1,622	1,361	-261	-16%
Number of Unsheltered Persons in Families	188	285	299	225	229	4	2%
Number of Sheltered Individuals	911	909	923	1,013	989	-24	-2%
Number of Unsheltered Individuals	1,445	1,654	1,874	2,099	1,916	-183	-9%
Total Homeless Persons	4,712	4,903	4,940	4,959	4,495	-464	-9%
Number of Sheltered Families	526	485	436	399	340	-59	-15%
Number of Unsheltered Families	52	71	77	59	67	8	14%
Number of Total Families	578	556	513	458	407	-51	-11%
Sheltered Chronically Homeless Individuals	99	135	107	137	161	24	18%
Unsheltered Chronically Homeless Individuals	558	644	887	900	851	-49	-5%
Total Chronically Homeless Individuals	657	779	994	1,037	1,012	-25	-2%
Sheltered Veterans	214	240	224	214	212	-2	-1%
Unsheltered Veterans	171	227	189	235	195	-40	-17%
Total Veterans	385	467	413	449	407	-42	-9%
Sheltered Unaccompanied Youth (up to 24)	--	50	57	50	39	-11	-22%
Unsheltered Unaccompanied Youth (up to 24)	--	106	111	160	104	-56	-35%
Total Unaccompanied Youth (up to 24)	--	156	168	210	143	-67	-32%

System Performance Measures Summary

	2014	2015	2016	2017	2018	2017-18 Change	% Change
Average Length of Time Homeless (days)	N/A	349	250	227	211	-16	-7%
Rate People Return to Homelessness in 6 Months	N/A	7.5%	7.2%	10.5%	5.3%	-5.2%	N/A
Number of People who are Homeless for the First Time	N/A	3691	3466	3799	3382	-417	-11%
Rate People Exit from ES, SH, TH, and RRH to PH	N/A	59.1%	60.0%	59.9%	59.5%	-0.4%	N/A
Rate People in PSH and OPH Retain or Exit to PH	N/A	94.4%	95.2%	95.0%	94.4%	-0.6%	N/A

Housing Inventory Count Summary

	2014	2015	2016	2017	2018	2017-18 Change	% Change
Emergency Shelter (ES)	1,161	1,110	1,414	1,298	1,294	-4	0%
Safe Haven (SH)	25	25	25	25	35	10	40%
Transitional Housing (TH)	2,327	2,352	1,978	1,893	1,437	-456	-24%
Permanent Supportive Housing (PSH)	859	921	1,677	1,684	1,880	196	12%
Rapid Re-Housing (RRH)	--	--	104	875	1,177	302	35%

Award Summary

	2014	2015	2016	2017	2018	2017-18 Change	% Change
Continuum of Care (CoC)	\$9,791,369	\$9,265,576	\$9,372,980	\$9,353,552	\$9,483,399	\$129,847	1%
Emergency Solutions Grants (ESG)	\$635,084	\$676,821	\$655,892	\$1,937,791	\$648,992	(\$1,288,799)	-67%
Youth Homelessness Demonstration Program (YHDP)	N/A	N/A	--	--	\$3,804,756	--	--