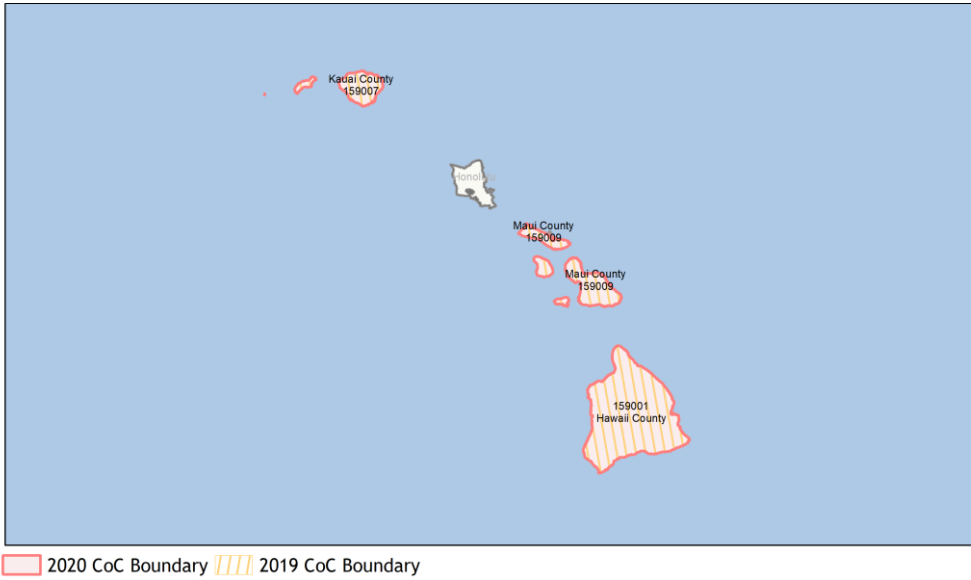
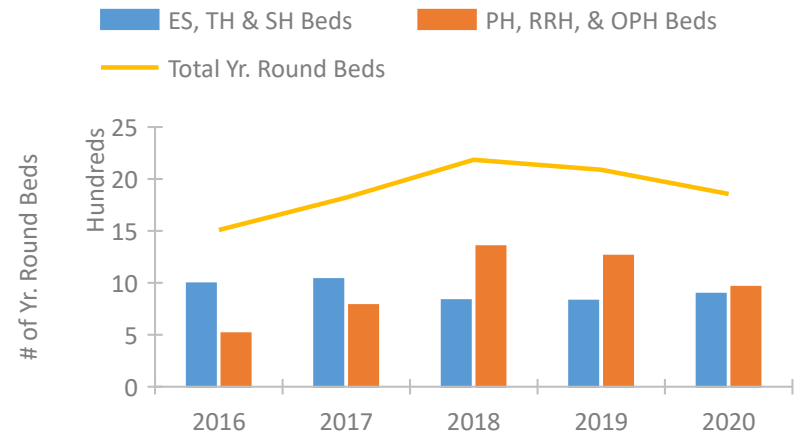


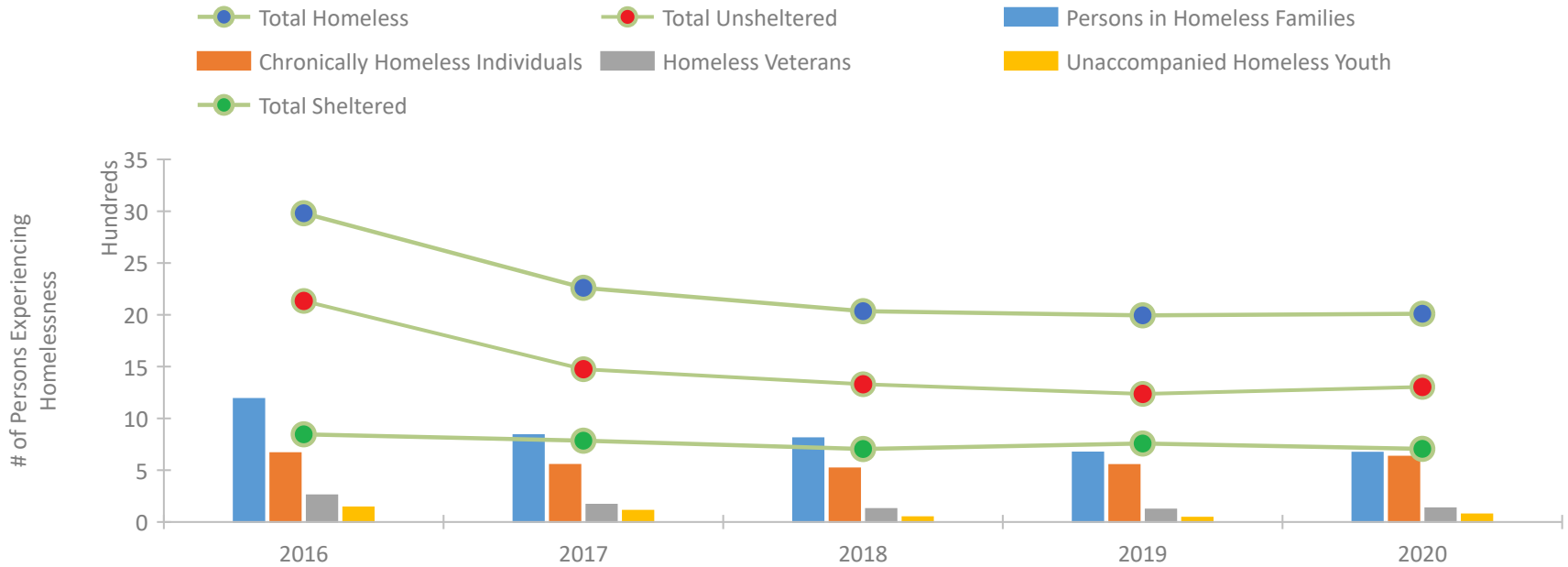
CoC Performance Profile HI-500 Hawaii Balance of State CoC



Housing Inventory Count by Program Type

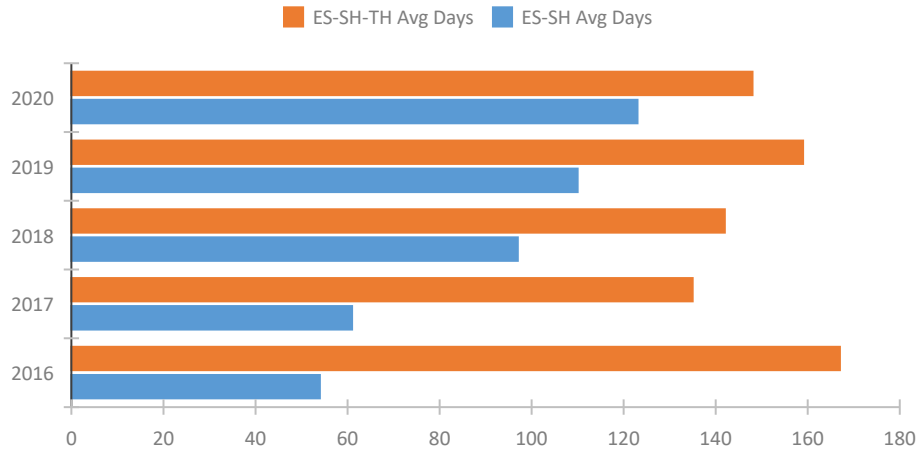


Homeless Population – Point-in-Time (PIT) Count

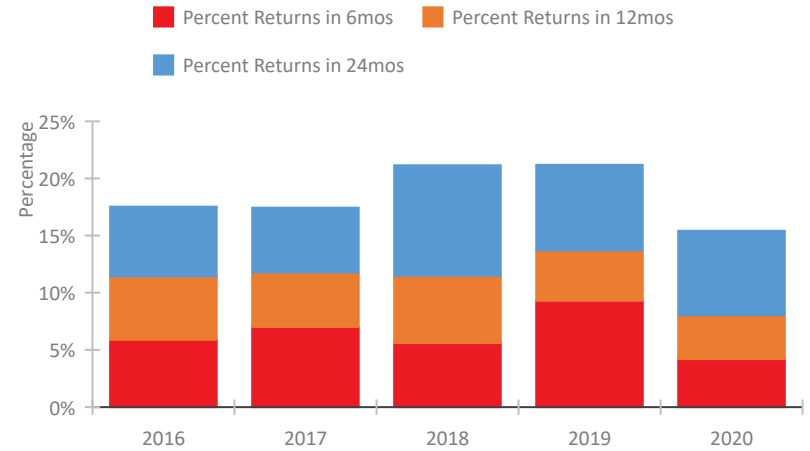


CoC Performance Profile HI-500 Hawaii Balance of State CoC

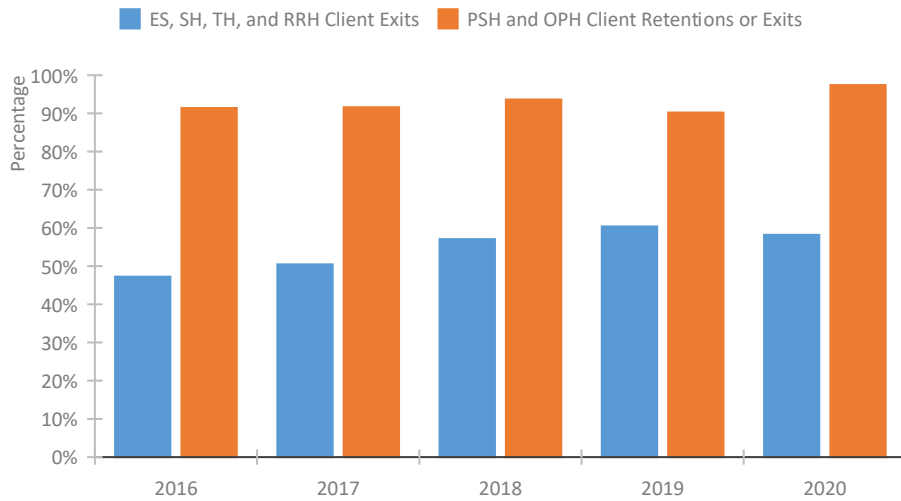
Length of Time Homeless



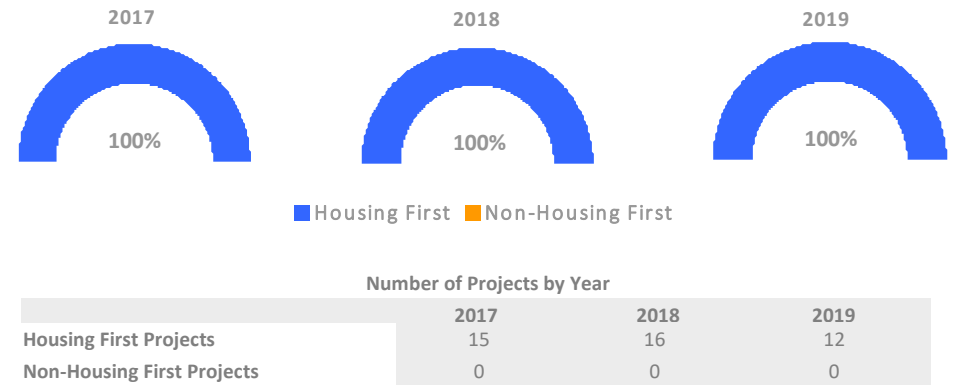
Returns to Homelessness Over Time



Exits to Permanent Housing by Program Type



Proportion of Housing First Projects by Year*



*In 2020 HUD awarded renewal projects noncompetitively, therefore no new data was collected and Housing First data remains the same from 2019 to 2020.

Data Summary: HI-500 Hawaii Balance of State CoC

Point-In-Time Count Summary

	2016	2017	2018	2019	2020	2019-20 Change	% Change
Number of Sheltered Persons in Families	487	540	479	507	416	-91	-18%
Number of Unsheltered Persons in Families	701	298	330	164	253	89	54%
Number of Sheltered Individuals	359	245	226	251	290	39	16%
Number of Unsheltered Individuals	1,434	1,178	1,000	1,073	1,051	-22	-2%
Total Homeless Persons	2,981	2,261	2,035	1,995	2,010	15	1%
Number of Sheltered Families	133	140	135	171	117	-54	-32%
Number of Unsheltered Families	159	68	81	43	67	24	56%
Number of Total Families	292	208	216	214	184	-30	-14%
Sheltered Chronically Homeless Individuals	13	27	41	37	76	39	105%
Unsheltered Chronically Homeless Individuals	652	524	476	513	555	42	8%
Total Chronically Homeless Individuals	665	551	517	550	631	81	15%
Sheltered Veterans	40	23	28	25	34	9	36%
Unsheltered Veterans	217	143	97	96	98	2	2%
Total Veterans	257	166	125	121	132	11	9%
Sheltered Unaccompanied Youth (up to 24)	25	6	11	8	11	3	38%
Unsheltered Unaccompanied Youth (up to 24)	116	103	35	33	62	29	88%
Total Unaccompanied Youth (up to 24)	141	109	46	41	73	32	78%

System Performance Measures Summary

	2016	2017	2018	2018	2020	2019-20 Change	% Change
Average Length of Time Homeless (days)	167	135	142	159	148	-11	-6.9%
Rate People Return to Homelessness in 6 Months	5.9%	7.0%	5.6%	9.3%	4.2%	-5.1%	N/A
Number of People who are Homeless for the First Time	1,716	1,984	1,665	1,267	1,196	-71	-5.6%
Rate People Exit from ES, SH, TH, and RRH to PH	47.2%	50.5%	57.1%	60.4%	58.2%	-2.2%	N/A
Rate People in PSH and OPH Retain or Exit to PH	91.4%	91.6%	93.7%	90.2%	97.4%	7.2%	N/A

Housing Inventory Count Summary

	2016	2017	2018	2019	2020	2019-20 Change	% Change
Emergency Shelter (ES)	300	395	544	525	487	-38	-7%
Transitional Housing (TH)	695	641	289	303	408	105	35%
Permanent Supportive Housing (PSH)	455	442	660	749	667	-82	-11%
Rapid Re-Housing (RRH)	59	344	692	512	295	-217	-42%

Award Summary

	2016	2017	2018	2019	2020	2019-20 Change	% Change
Continuum of Care (CoC)	\$2,146,702	\$2,408,944	\$2,613,196	\$2,667,935	\$2,881,917	\$213,982	8%
ESG (HI state recipient - no direct funding)	\$439,415	\$437,204	\$437,933	\$449,445	\$454,632	\$5,187	1%