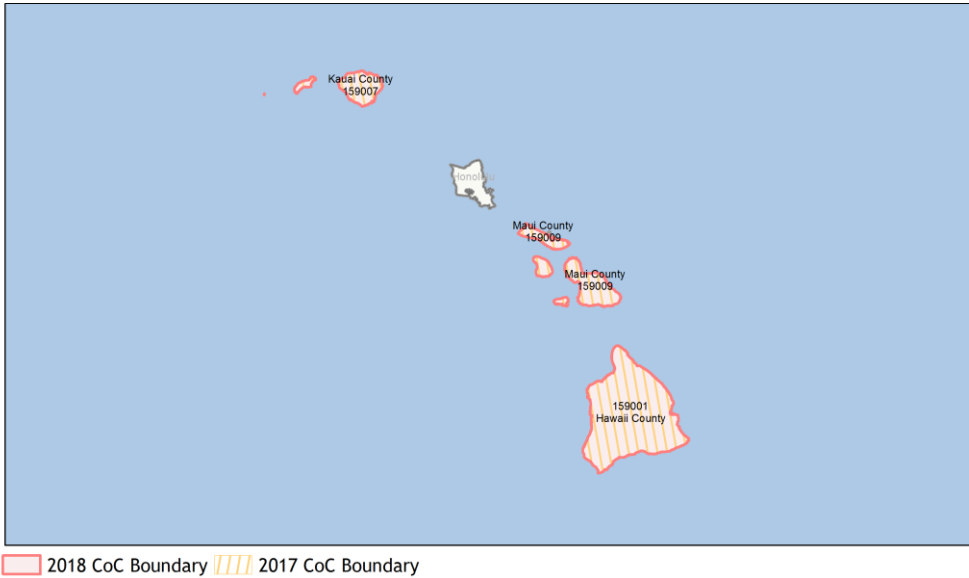
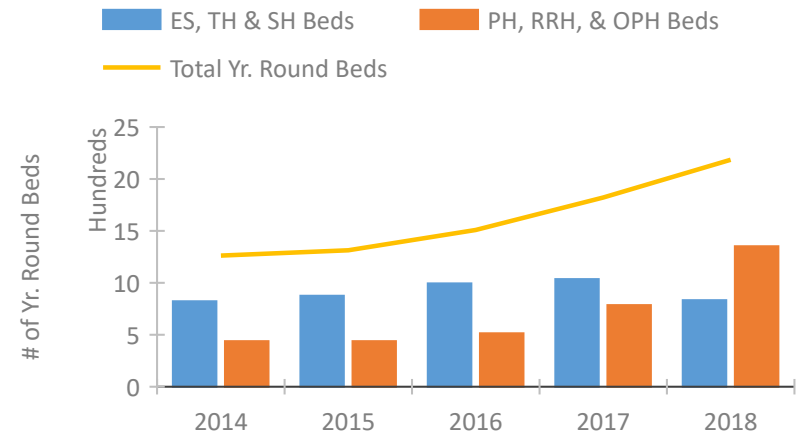


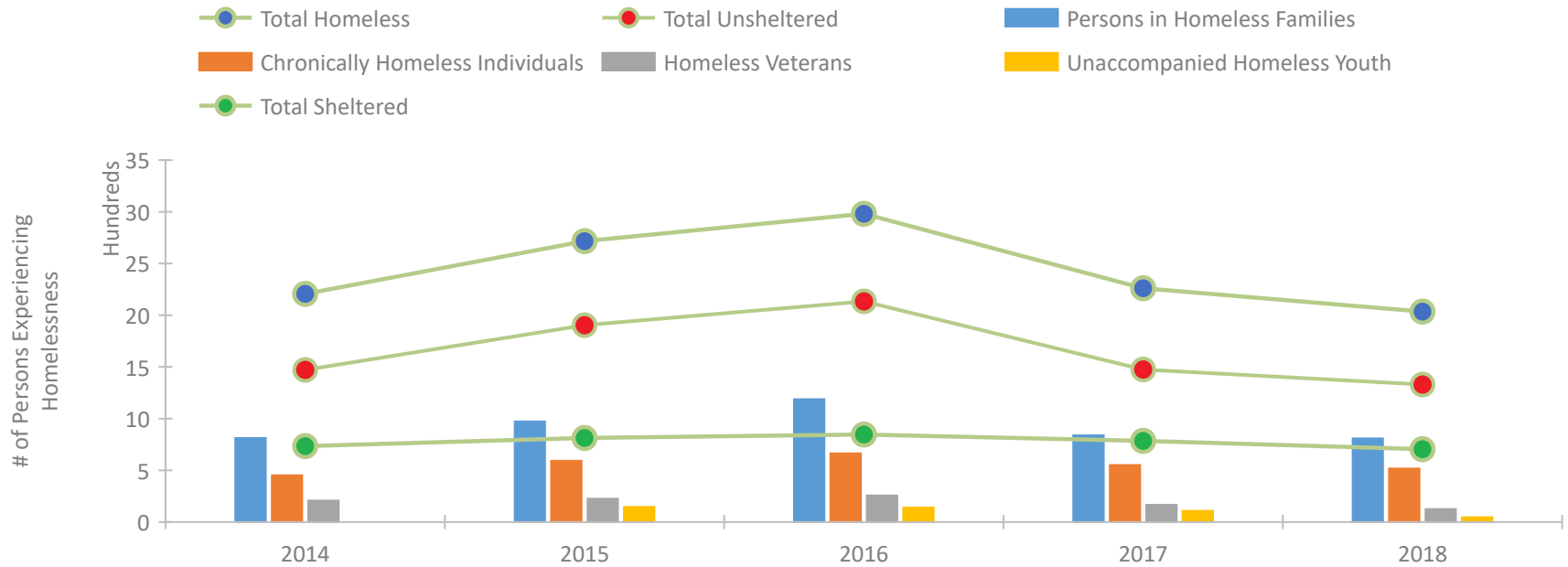
CoC Performance Profile HI-500 Hawaii Balance of State CoC



Housing Inventory Count by Program Type

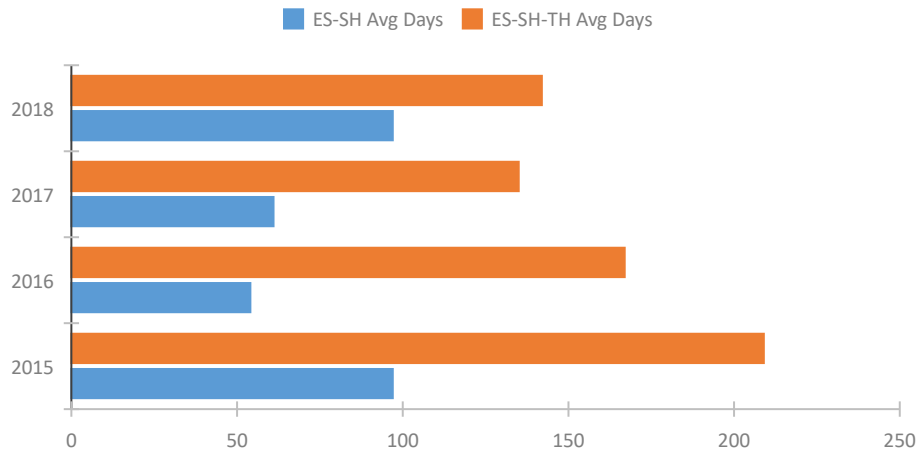


Homeless Population – Point-in-Time (PIT) Count

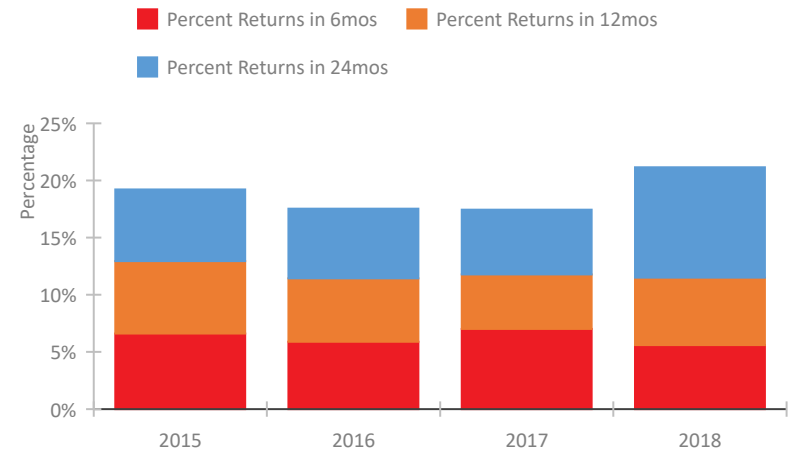


CoC Performance Profile HI-500 Hawaii Balance of State CoC

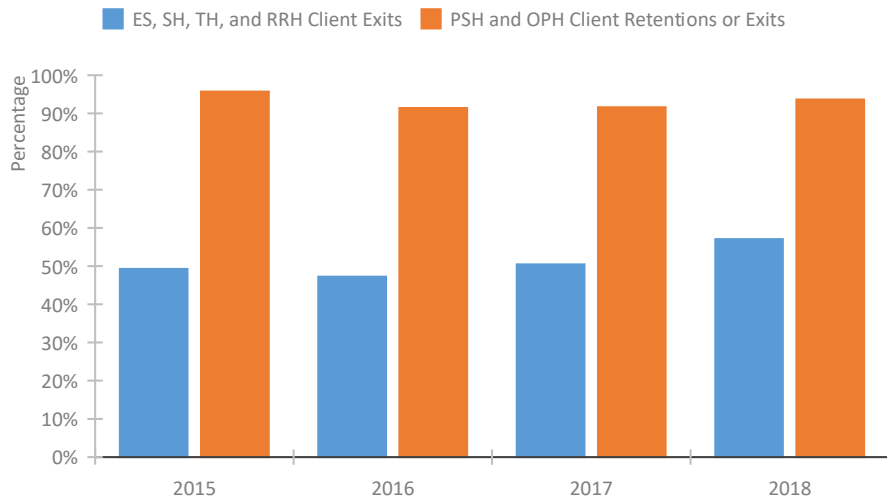
Length of Time Homeless



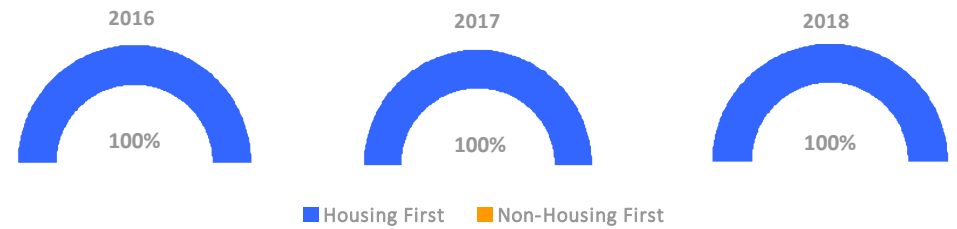
Returns to Homelessness Over Time



Exits to Permanent Housing by Program Type



Proportion of Housing First Projects by Year



Number of Projects by Year

	2016	2017	2018
Housing First Projects	17	15	16
Non-Housing First Projects	0	0	0

Data Summary: HI-500 Hawaii Balance of State CoC

Point-In-Time Count Summary

	2014	2015	2016	2017	2018	2017-18 Change	% Change
Number of Sheltered Persons in Families	481	479	487	540	479	-61	-11%
Number of Unsheltered Persons in Families	331	494	701	298	330	32	11%
Number of Sheltered Individuals	253	334	359	245	226	-19	-8%
Number of Unsheltered Individuals	1,141	1,410	1,434	1,178	1,000	-178	-15%
Total Homeless Persons	2,206	2,717	2,981	2,261	2,035	-226	-10%
Number of Sheltered Families	137	128	133	140	135	-5	-4%
Number of Unsheltered Families	75	114	159	68	81	13	19%
Number of Total Families	212	242	292	208	216	8	4%
Sheltered Chronically Homeless Individuals	46	18	13	27	41	14	52%
Unsheltered Chronically Homeless Individuals	406	575	652	524	476	-48	-9%
Total Chronically Homeless Individuals	452	593	665	551	517	-34	-6%
Sheltered Veterans	33	35	40	23	28	5	22%
Unsheltered Veterans	175	190	217	143	97	-46	-32%
Total Veterans	208	225	257	166	125	-41	-25%
Sheltered Unaccompanied Youth (up to 24)	--	26	25	6	11	5	83%
Unsheltered Unaccompanied Youth (up to 24)	--	121	116	103	35	-68	-66%
Total Unaccompanied Youth (up to 24)	--	147	141	109	46	-63	-58%

System Performance Measures Summary

	2014	2015	2016	2017	2018	2017-18 Change	% Change
Average Length of Time Homeless (days)	N/A	209	167	135	142	7	5.2%
Rate People Return to Homelessness in 6 Months	N/A	6.6%	5.9%	7.0%	5.6%	-1.4%	N/A
Number of People who are Homeless for the First Time	N/A	1833	1716	1984	1665	-319	-16.1%
Rate People Exit from ES, SH, TH, and RRH to PH	N/A	49.3%	47.2%	50.5%	57.1%	6.6%	N/A
Rate People in PSH and OPH Retain or Exit to PH	N/A	95.7%	91.4%	91.6%	93.7%	2%	N/A

Housing Inventory Count Summary

	2014	2015	2016	2017	2018	2017-18 Change	% Change
Emergency Shelter (ES)	331	294	300	395	544	149	38%
Transitional Housing (TH)	492	582	695	641	289	-352	-55%
Permanent Supportive Housing (PSH)	361	384	455	442	660	218	49%
Rapid Re-Housing (RRH)	78	54	59	344	692	348	101%

Award Summary

	2014	2015	2016	2017	2018	2017-18 Change	% Change
Continuum of Care (CoC)	\$1,828,631	\$2,100,869	\$2,146,702	\$2,408,944	\$2,613,196	\$204,252	8%
ESG (HI state recipient - no direct funding)	\$402,239	\$442,987	\$439,415	\$437,204	\$437,933	\$729	0%