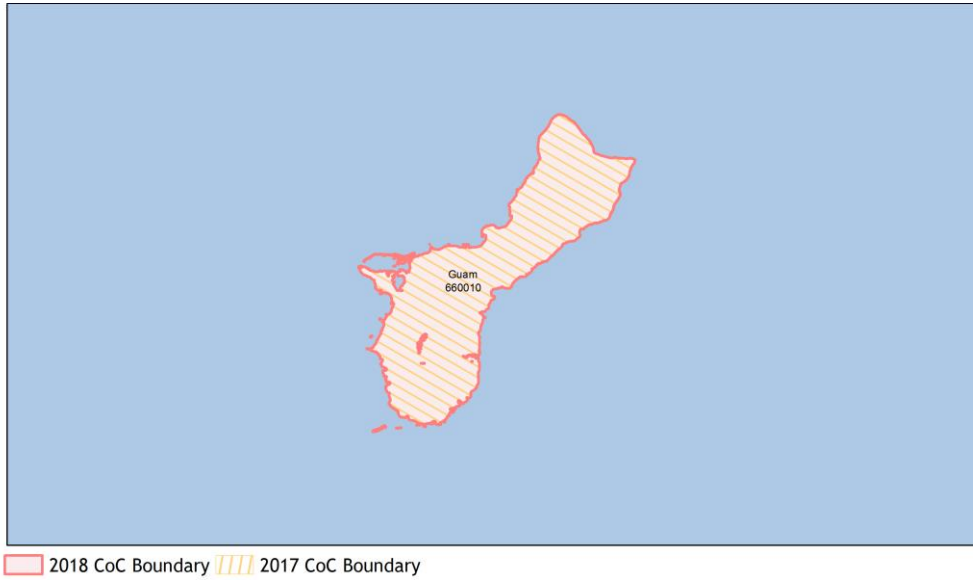
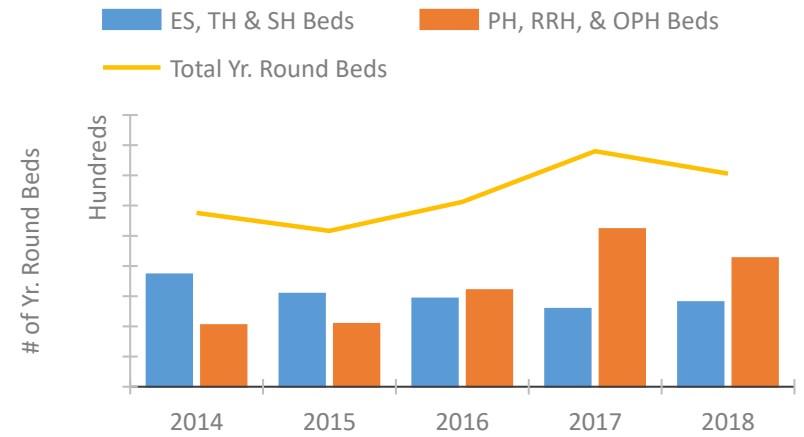


## CoC Performance Profile GU-500

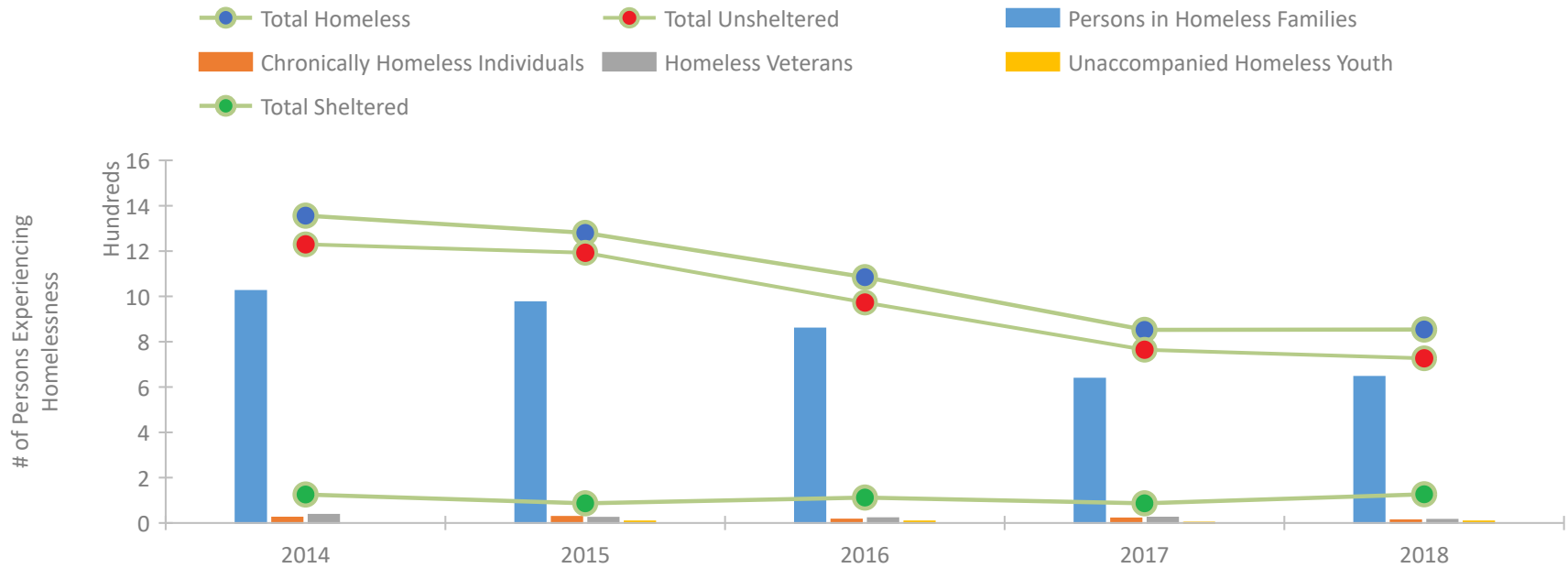
### Guam CoC



### Housing Inventory Count by Program Type

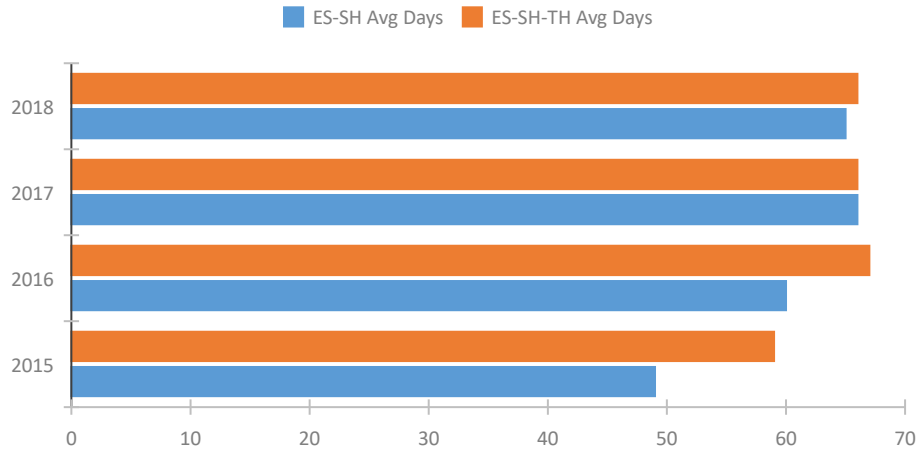


### Homeless Population – Point-in-Time (PIT) Count

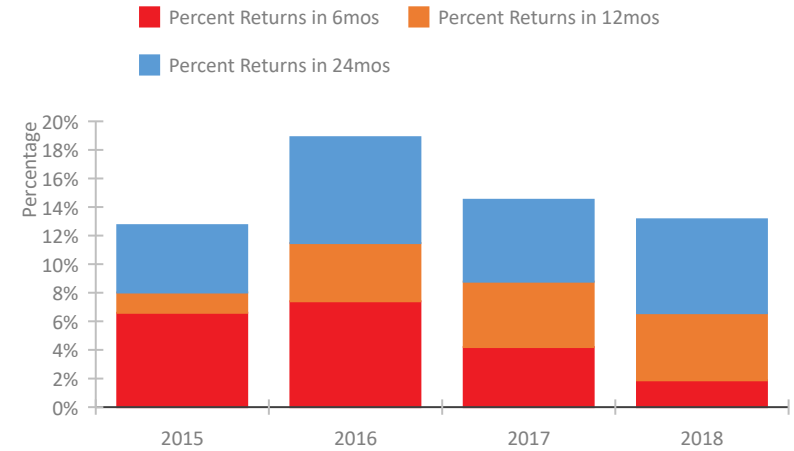


## CoC Performance Profile GU-500 Guam CoC

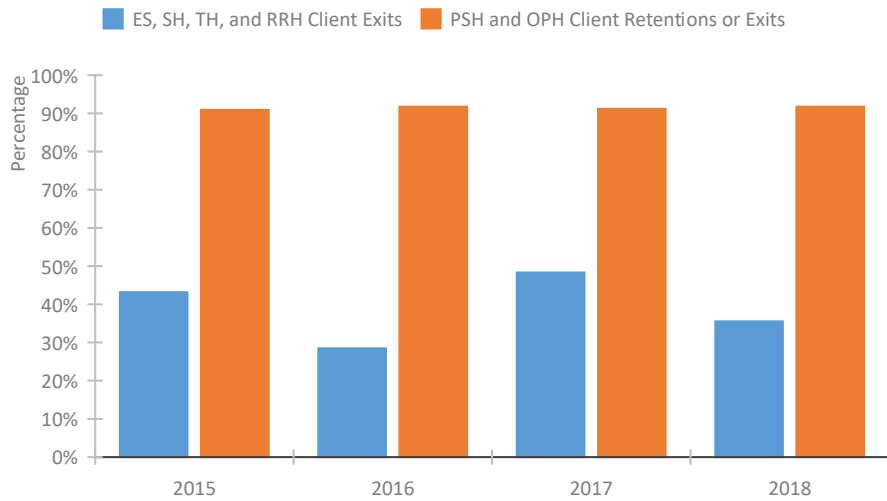
### Length of Time Homeless



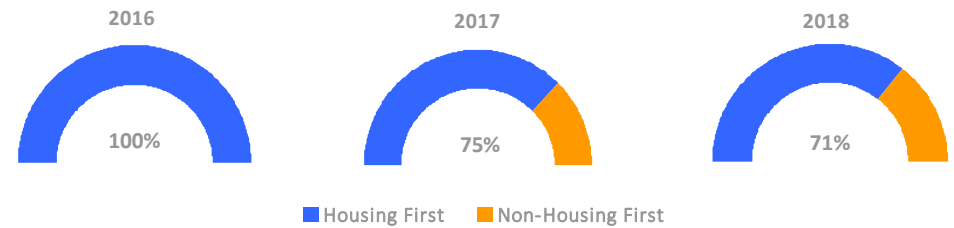
### Returns to Homelessness Over Time



### Exits to Permanent Housing by Program Type



### Proportion of Housing First Projects by Year



### Number of Projects by Year

	2016	2017	2018
Housing First Projects	6	6	5
Non-Housing First Projects	0	2	2

## Data Summary: GU-500 Guam CoC

### Point-In-Time Count Summary

	2014	2015	2016	2017	2018	2017-18 Change	% Change
Number of Sheltered Persons in Families	89	64	94	70	105	35	50%
Number of Unsheltered Persons in Families	935	910	764	567	540	-27	-5%
Number of Sheltered Individuals	37	23	18	17	22	5	29%
Number of Unsheltered Individuals	295	283	209	198	187	-11	-6%
<b>Total Homeless Persons</b>	<b>1,356</b>	<b>1,280</b>	<b>1,085</b>	<b>852</b>	<b>854</b>	<b>2</b>	<b>0%</b>
Number of Sheltered Families	20	14	23	17	25	8	47%
Number of Unsheltered Families	160	166	135	100	95	-5	-5%
<b>Number of Total Families</b>	<b>180</b>	<b>180</b>	<b>158</b>	<b>117</b>	<b>120</b>	<b>3</b>	<b>3%</b>
Sheltered Chronically Homeless Individuals	0	0	0	0	0	0	--
Unsheltered Chronically Homeless Individuals	24	27	15	20	12	-8	-40%
<b>Total Chronically Homeless Individuals</b>	<b>24</b>	<b>27</b>	<b>15</b>	<b>20</b>	<b>12</b>	<b>-8</b>	<b>-40%</b>
Sheltered Veterans	6	1	6	4	4	0	0%
Unsheltered Veterans	30	22	15	20	10	-10	-50%
<b>Total Veterans</b>	<b>36</b>	<b>23</b>	<b>21</b>	<b>24</b>	<b>14</b>	<b>-10</b>	<b>-42%</b>
Sheltered Unaccompanied Youth (up to 24)	--	1	4	0	5	5	100%
Unsheltered Unaccompanied Youth (up to 24)	--	6	3	1	2	1	100%
<b>Total Unaccompanied Youth (up to 24)</b>	<b>--</b>	<b>7</b>	<b>7</b>	<b>1</b>	<b>7</b>	<b>6</b>	<b>600%</b>

### System Performance Measures Summary

	2014	2015	2016	2017	2018	2017-18 Change	% Change
Average Length of Time Homeless (days)	N/A	59	67	66	66	0	0%
Rate People Return to Homelessness in 6 Months	N/A	6.6%	7.4%	4.2%	1.9%	-2.3%	N/A
Number of People who are Homeless for the First Time	N/A	529	525	496	594	98	19.8%
Rate People Exit from ES, SH, TH, and RRH to PH	N/A	43.1%	28.5%	48.3%	35.5%	-12.8%	N/A
Rate People in PSH and OPH Retain or Exit to PH	N/A	90.9%	91.8%	91.2%	91.8%	0.5%	N/A

### Housing Inventory Count Summary

	2014	2015	2016	2017	2018	2017-18 Change	% Change
Emergency Shelter (ES)	102	132	125	129	134	5	4%
Transitional Housing (TH)	84	22	21	--	6	--	--
Permanent Supportive Housing (PSH)	102	104	160	153	147	-6	-4%
Rapid Re-Housing (RRH)	--	--	--	108	66	-42	-39%

### Award Summary

	2014	2015	2016	2017	2018	2017-18 Change	% Change
<b>Continuum of Care (CoC)</b>	\$1,346,148	\$1,122,558	\$1,121,767	\$1,095,776	\$1,136,986	\$41,210	4%
<b>Emergency Solutions Grants (ESG)</b>	--	\$233,432	\$234,233	\$377,118	\$235,382	(\$141,736)	-38%