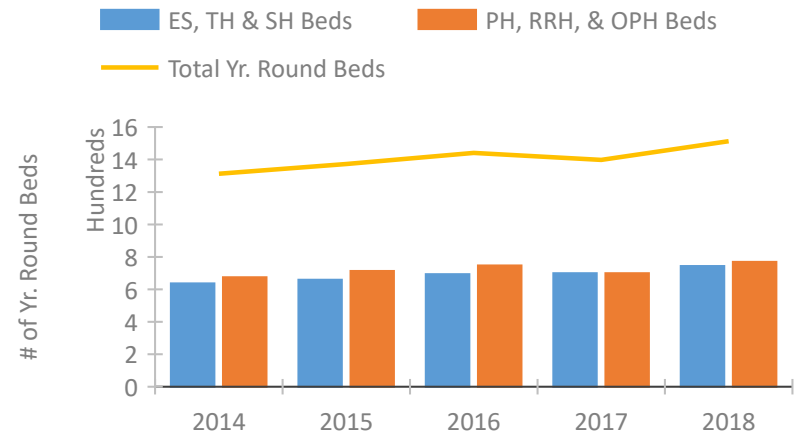


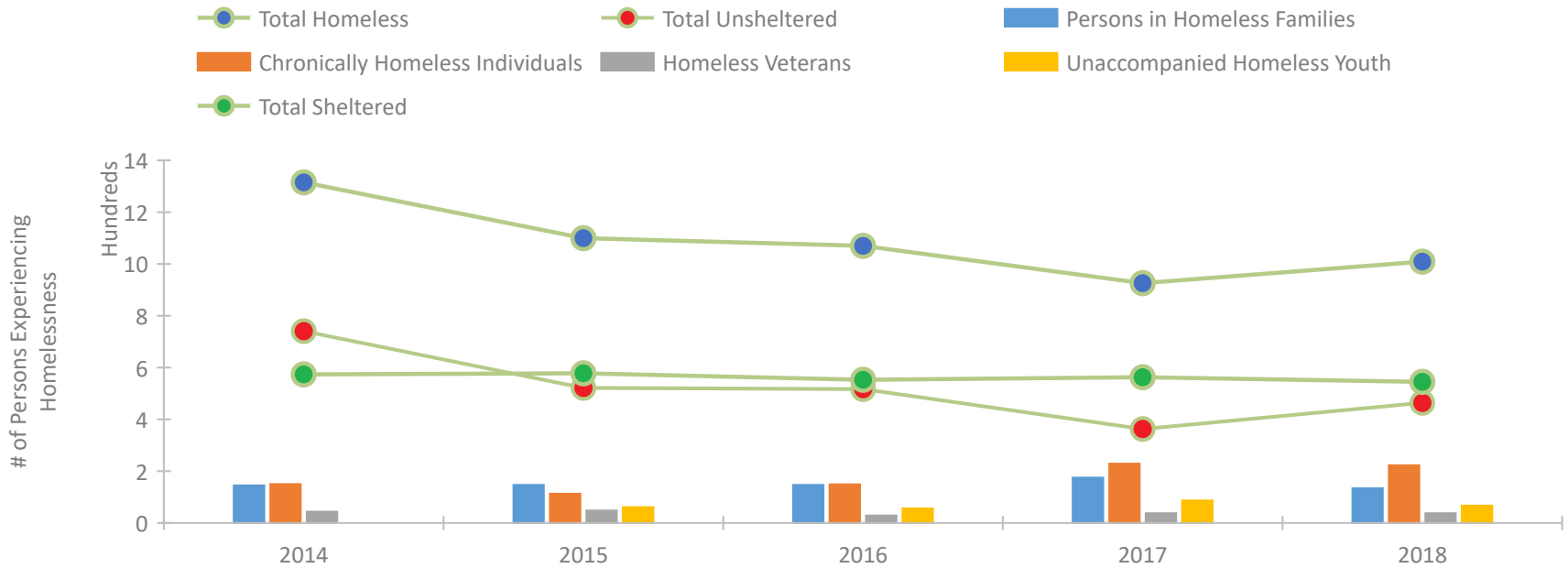
CoC Performance Profile GA-507 Savannah/Chatham County CoC



Housing Inventory Count by Program Type

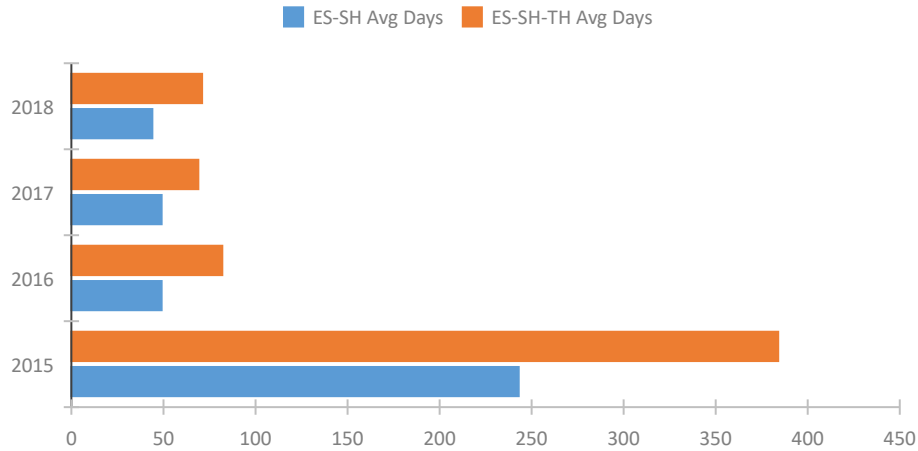


Homeless Population – Point-in-Time (PIT) Count

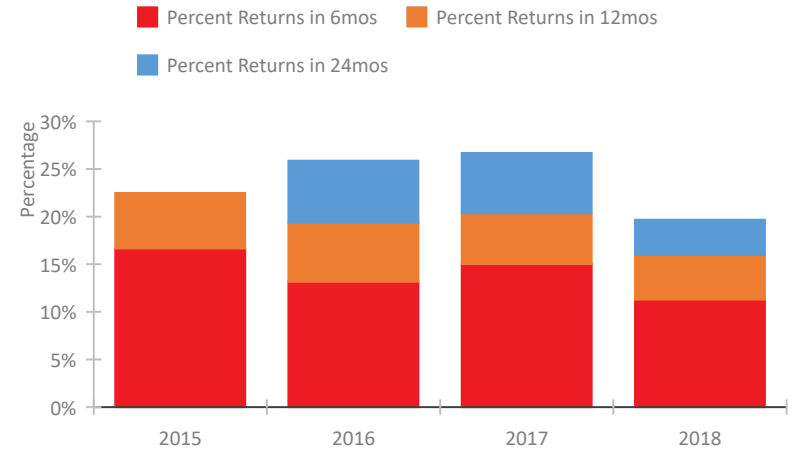


CoC Performance Profile GA-507 Savannah/Chatham County CoC

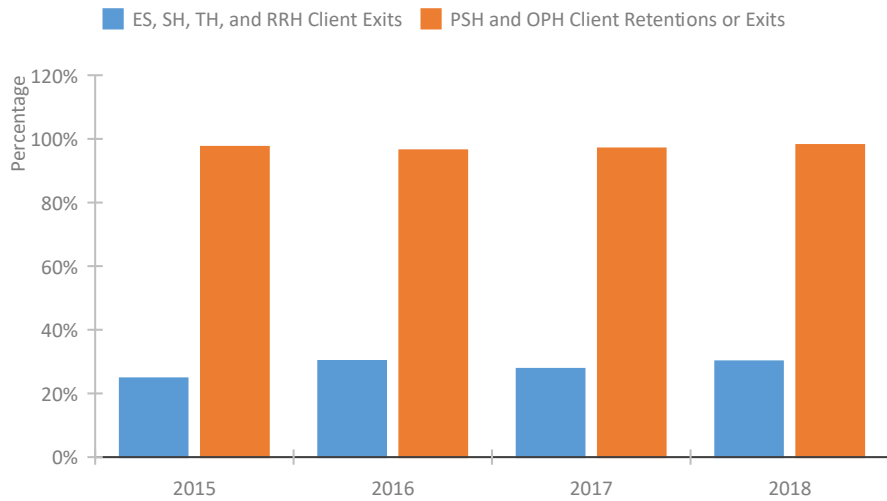
Length of Time Homeless



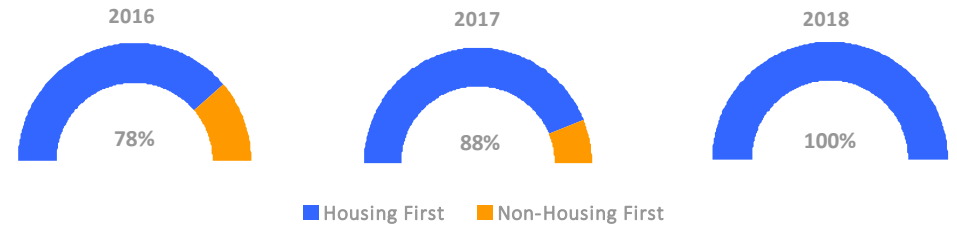
Returns to Homelessness Over Time



Exits to Permanent Housing by Program Type



Proportion of Housing First Projects by Year



Number of Projects by Year

	2016	2017	2018
Housing First Projects	7	7	7
Non-Housing First Projects	2	1	0

Data Summary: GA-507 Savannah/Chatham County CoC

Point-In-Time Count Summary

	2014	2015	2016	2017	2018	2017-18 Change	% Change
Number of Sheltered Persons in Families	145	147	147	175	134	-41	-23%
Number of Unsheltered Persons in Families	0	0	0	0	0	0	--
Number of Sheltered Individuals	429	431	406	388	411	23	6%
Number of Unsheltered Individuals	741	522	517	363	464	101	28%
Total Homeless Persons	1,315	1,100	1,070	926	1,009	83	9%
Number of Sheltered Families	59	55	48	53	35	-18	-34%
Number of Unsheltered Families	0	0	0	0	0	0	--
Number of Total Families	59	55	48	53	35	-18	-34%
Sheltered Chronically Homeless Individuals	55	38	29	62	41	-21	-34%
Unsheltered Chronically Homeless Individuals	95	75	120	167	182	15	9%
Total Chronically Homeless Individuals	150	113	149	229	223	-6	-3%
Sheltered Veterans	37	32	17	11	16	5	45%
Unsheltered Veterans	7	16	12	27	22	-5	-19%
Total Veterans	44	48	29	38	38	0	0%
Sheltered Unaccompanied Youth (up to 24)	--	25	19	41	27	-14	-34%
Unsheltered Unaccompanied Youth (up to 24)	--	36	37	46	40	-6	-13%
Total Unaccompanied Youth (up to 24)	--	61	56	87	67	-20	-23%

System Performance Measures Summary

	2014	2015	2016	2017	2018	2017-18 Change	% Change
Average Length of Time Homeless (days)	N/A	384	82	69	71	2	2.9%
Rate People Return to Homelessness in 6 Months	N/A	16.6%	13.2%	15.0%	11.3%	-3.7%	N/A
Number of People who are Homeless for the First Time	N/A	1294	1277	1213	989	-224	-18.5%
Rate People Exit from ES, SH, TH, and RRH to PH	N/A	24.7%	30.2%	27.7%	30.1%	2.3%	N/A
Rate People in PSH and OPH Retain or Exit to PH	N/A	97.5%	96.4%	97.0%	98.1%	1.1%	N/A

Housing Inventory Count Summary

	2014	2015	2016	2017	2018	2017-18 Change	% Change
Emergency Shelter (ES)	304	298	310	306	341	35	11%
Transitional Housing (TH)	333	361	384	393	403	10	3%
Permanent Supportive Housing (PSH)	675	713	747	689	765	76	11%
Other Permanent Housing (OPH)	--	--	--	10	4	-6	-60%

Award Summary

	2014	2015	2016	2017	2018	2017-18 Change	% Change
Continuum of Care (CoC)	\$4,052,707	\$3,588,586	\$3,389,764	\$3,266,642	\$3,450,386	\$183,744	6%
Emergency Solutions Grants (ESG)	\$174,789	\$188,457	\$189,647	\$823,801	\$183,495	(\$640,306)	-78%