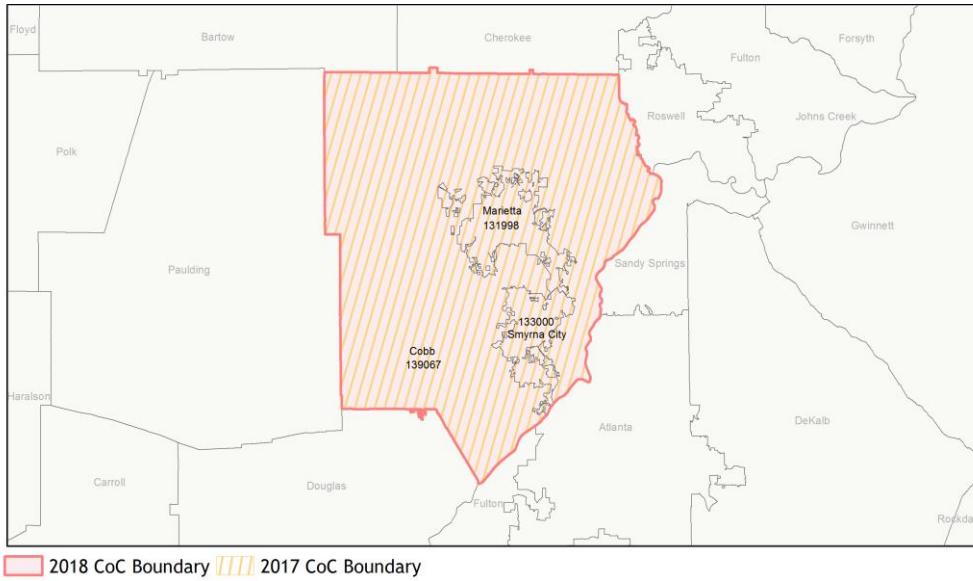
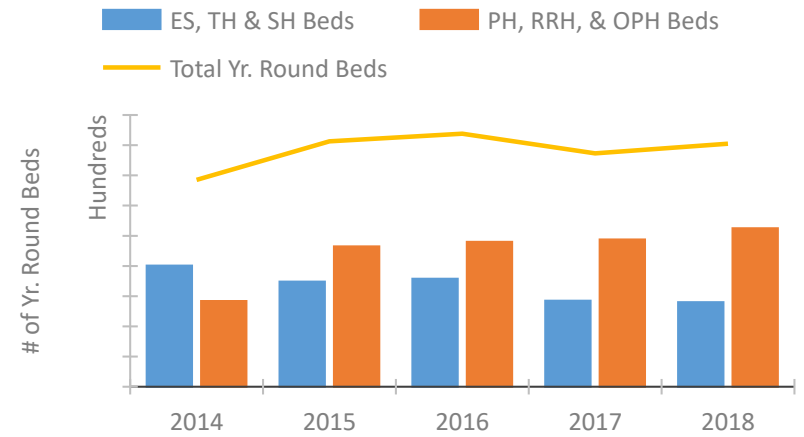


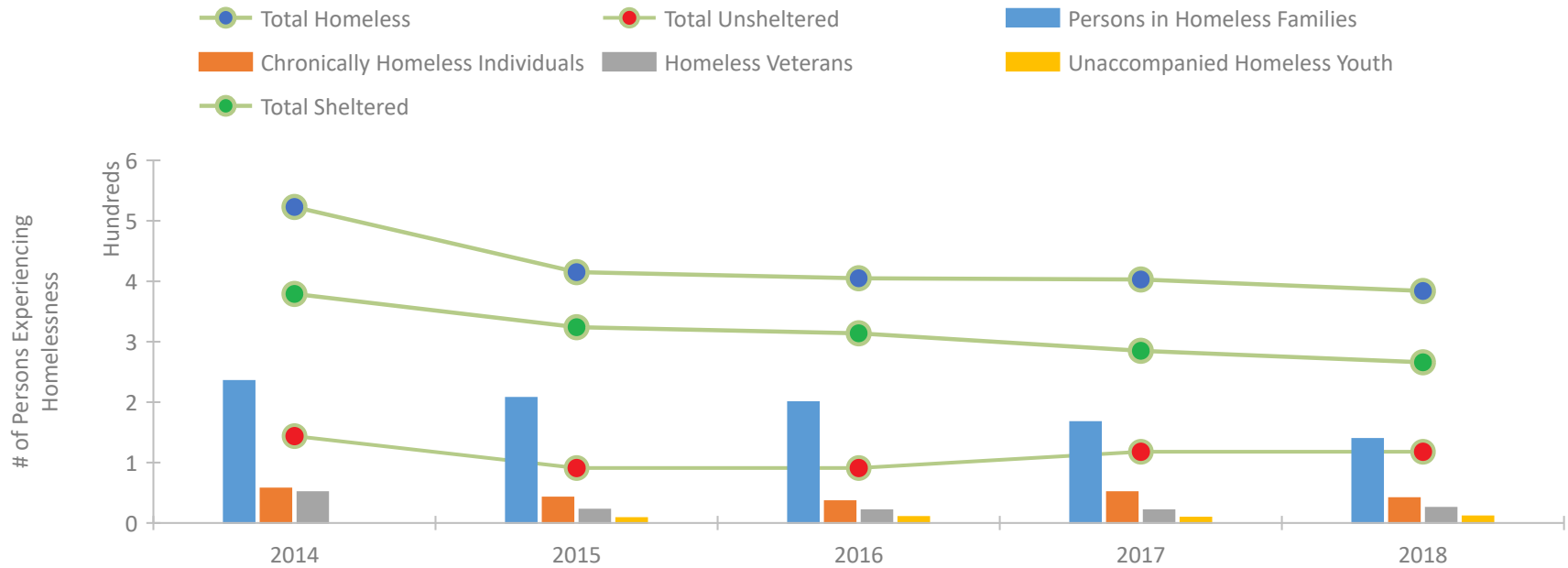
CoC Performance Profile GA-506 Marietta/Cobb County CoC



Housing Inventory Count by Program Type

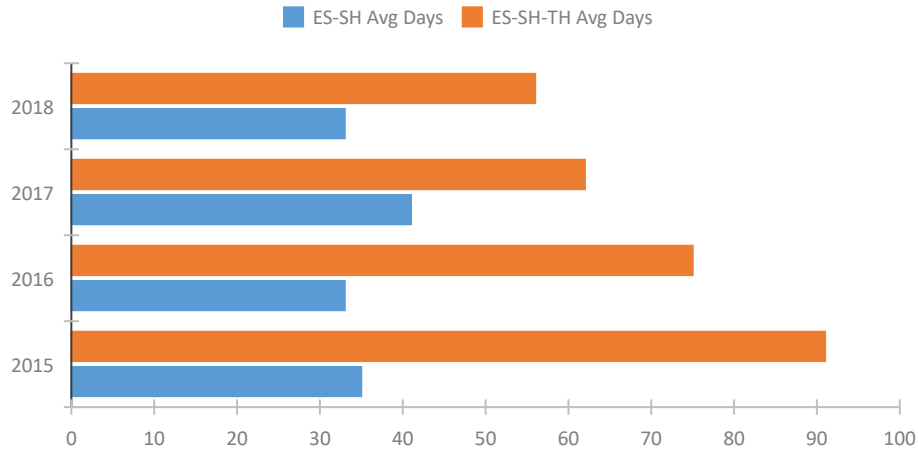


Homeless Population – Point-in-Time (PIT) Count

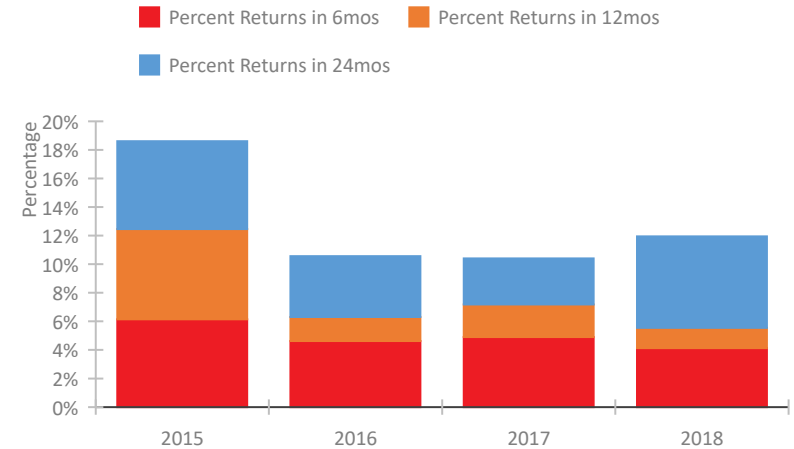


CoC Performance Profile GA-506 Marietta/Cobb County CoC

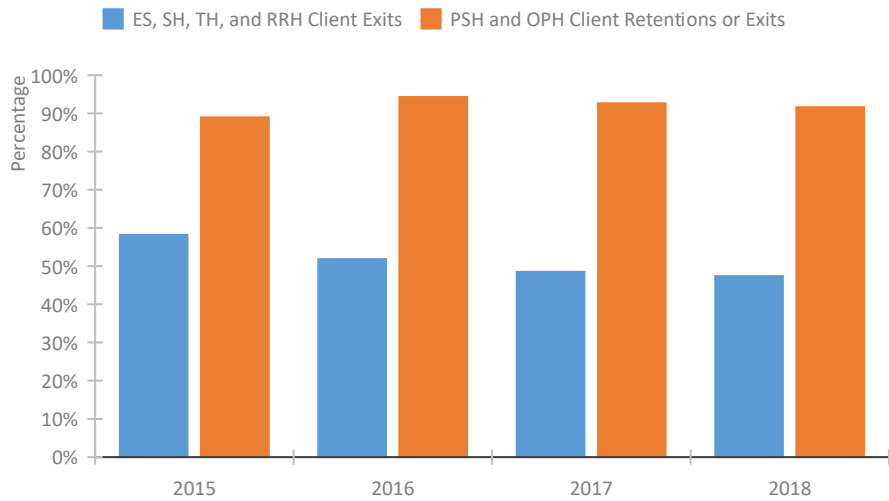
Length of Time Homeless



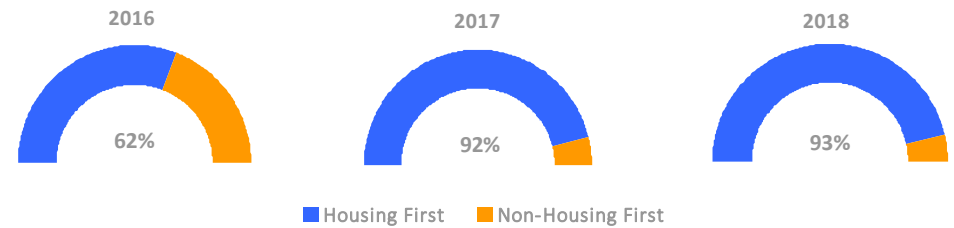
Returns to Homelessness Over Time



Exits to Permanent Housing by Program Type



Proportion of Housing First Projects by Year



Number of Projects by Year

	2016	2017	2018
Housing First Projects	8	12	13
Non-Housing First Projects	5	1	1

Data Summary: GA-506 Marietta/Cobb County CoC

Point-In-Time Count Summary

	2014	2015	2016	2017	2018	2017-18 Change	% Change
Number of Sheltered Persons in Families	213	185	178	153	125	-28	-18%
Number of Unsheltered Persons in Families	22	22	22	14	14	0	0%
Number of Sheltered Individuals	166	139	136	132	141	9	7%
Number of Unsheltered Individuals	122	69	69	104	104	0	0%
Total Homeless Persons	523	415	405	403	384	-19	-5%
Number of Sheltered Families	75	61	61	42	40	-2	-5%
Number of Unsheltered Families	5	7	7	4	4	0	0%
Number of Total Families	80	68	68	46	44	-2	-4%
Sheltered Chronically Homeless Individuals	21	8	2	18	8	-10	-56%
Unsheltered Chronically Homeless Individuals	36	34	34	33	33	0	0%
Total Chronically Homeless Individuals	57	42	36	51	41	-10	-20%
Sheltered Veterans	17	10	9	7	11	4	57%
Unsheltered Veterans	34	12	12	14	14	0	0%
Total Veterans	51	22	21	21	25	4	19%
Sheltered Unaccompanied Youth (up to 24)	--	7	9	7	9	2	29%
Unsheltered Unaccompanied Youth (up to 24)	--	1	1	2	2	0	0%
Total Unaccompanied Youth (up to 24)	--	8	10	9	11	2	22%

System Performance Measures Summary

	2014	2015	2016	2017	2018	2017-18 Change	% Change
Average Length of Time Homeless (days)	N/A	91	75	62	56	-6	-9.7%
Rate People Return to Homelessness in 6 Months	N/A	6.1%	4.6%	4.9%	4.1%	-0.8%	N/A
Number of People who are Homeless for the First Time	N/A	1075	1166	1182	1316	134	11.3%
Rate People Exit from ES, SH, TH, and RRH to PH	N/A	58.2%	51.8%	48.5%	47.4%	-1.1%	N/A
Rate People in PSH and OPH Retain or Exit to PH	N/A	89.0%	94.3%	92.6%	91.6%	-1%	N/A

Housing Inventory Count Summary

	2014	2015	2016	2017	2018	2017-18 Change	% Change
Emergency Shelter (ES)	119	107	139	151	148	-3	-2%
Transitional Housing (TH)	282	241	219	134	132	-2	-1%
Permanent Supportive Housing (PSH)	276	414	462	446	432	-14	-3%
Rapid Re-Housing (RRH)	8	51	18	42	93	51	121%

Award Summary

	2014	2015	2016	2017	2018	2017-18 Change	% Change
Continuum of Care (CoC)	\$2,084,323	\$2,200,358	\$2,152,110	\$2,200,978	\$2,301,469	\$100,491	5%
Emergency Solutions Grants (ESG)	\$249,798	\$272,801	\$272,208	\$282,094	\$284,440	\$2,346	1%