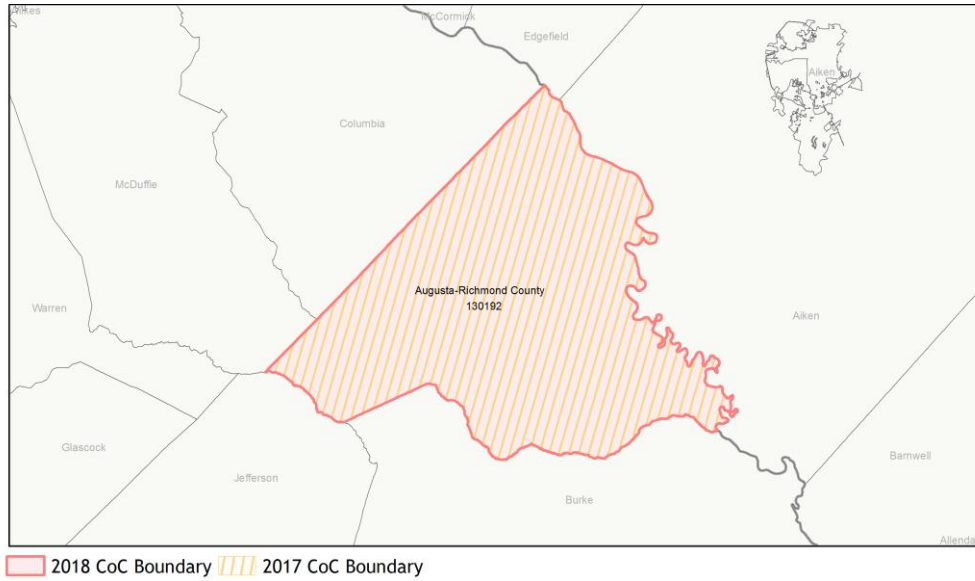
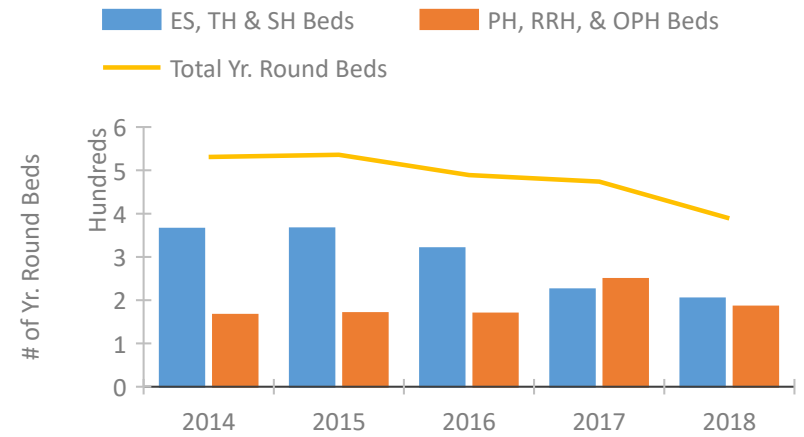


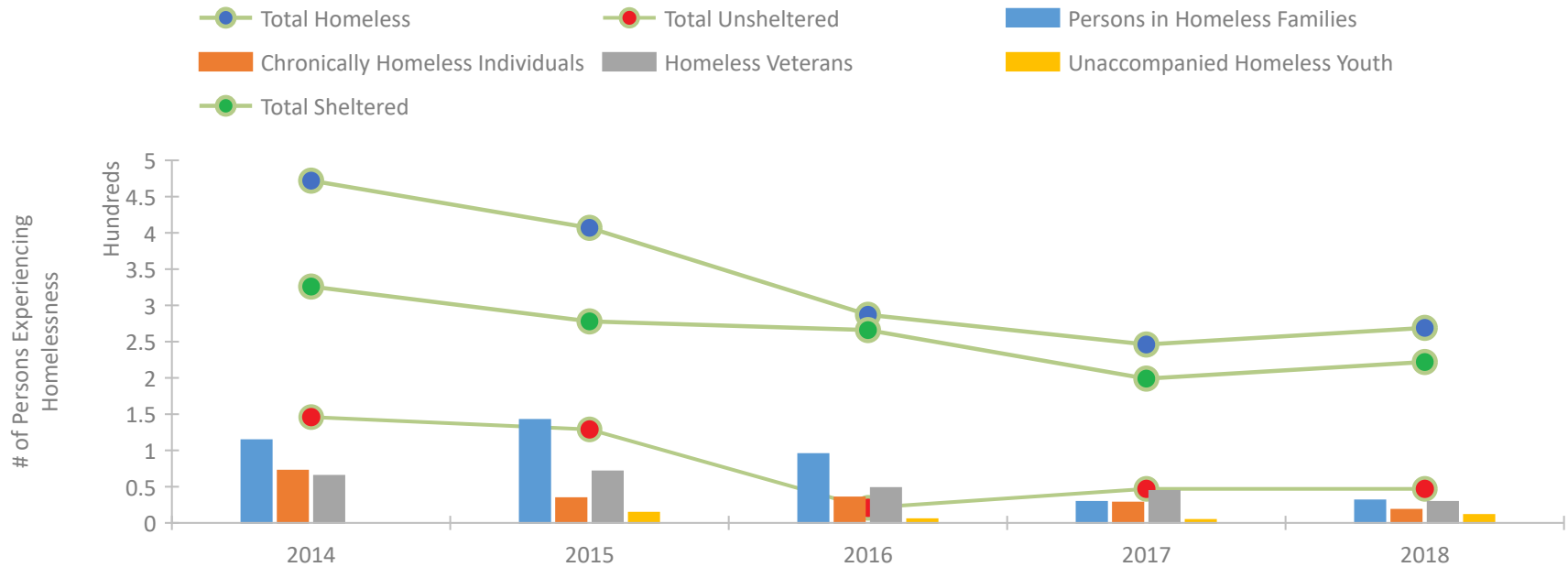
CoC Performance Profile GA-504 Augusta-Richmond County CoC



Housing Inventory Count by Program Type

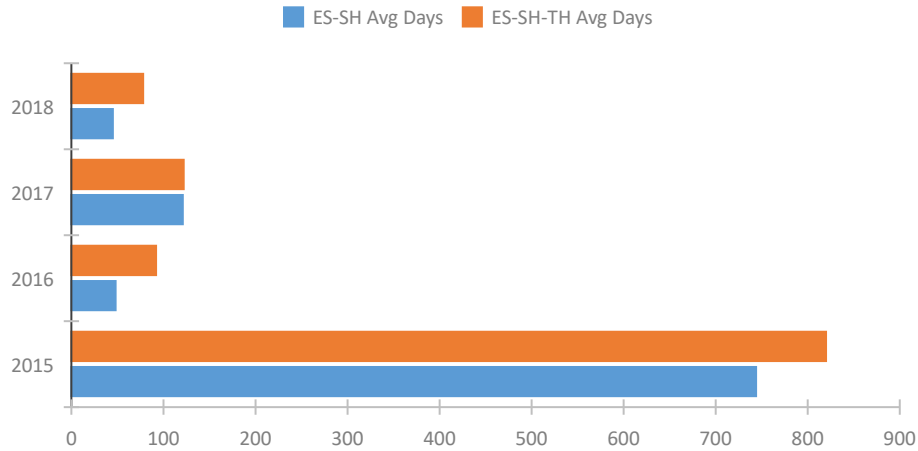


Homeless Population – Point-in-Time (PIT) Count

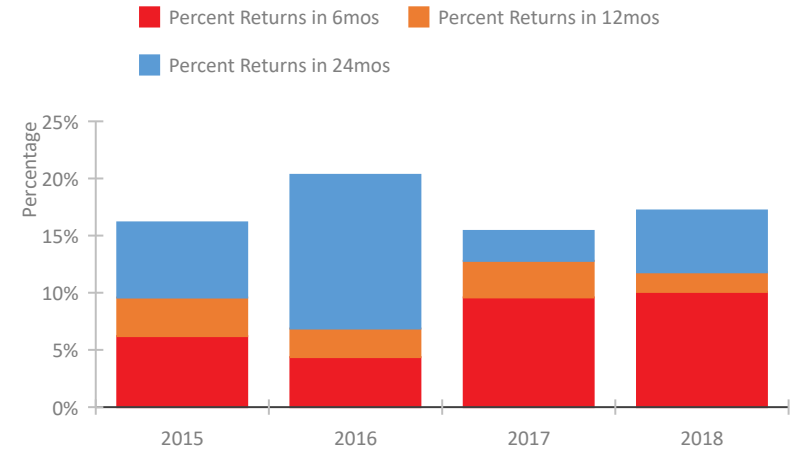


CoC Performance Profile GA-504 Augusta-Richmond County CoC

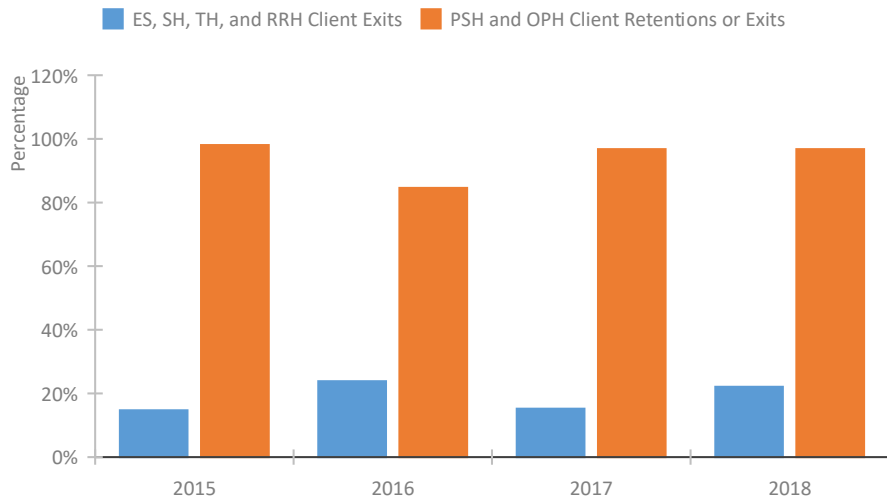
Length of Time Homeless



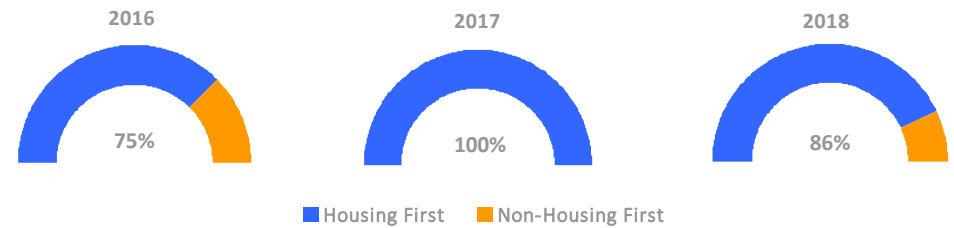
Returns to Homelessness Over Time



Exits to Permanent Housing by Program Type



Proportion of Housing First Projects by Year



Number of Projects by Year

	2016	2017	2018
Housing First Projects	3	3	6
Non-Housing First Projects	1	0	1

Data Summary: GA-504 Augusta-Richmond County CoC

Point-In-Time Count Summary

	2014	2015	2016	2017	2018	2017-18 Change	% Change
Number of Sheltered Persons in Families	88	82	92	29	31	2	7%
Number of Unsheltered Persons in Families	26	60	3	0	0	0	--
Number of Sheltered Individuals	238	196	174	170	191	21	12%
Number of Unsheltered Individuals	120	69	18	47	47	0	0%
Total Homeless Persons	472	407	287	246	269	23	9%
Number of Sheltered Families	29	26	30	11	11	0	0%
Number of Unsheltered Families	5	16	1	0	0	0	--
Number of Total Families	34	42	31	11	11	0	0%
Sheltered Chronically Homeless Individuals	32	14	26	26	16	-10	-38%
Unsheltered Chronically Homeless Individuals	40	20	9	2	2	0	0%
Total Chronically Homeless Individuals	72	34	35	28	18	-10	-36%
Sheltered Veterans	49	36	46	39	24	-15	-38%
Unsheltered Veterans	16	35	2	5	5	0	0%
Total Veterans	65	71	48	44	29	-15	-34%
Sheltered Unaccompanied Youth (up to 24)	--	10	5	2	9	7	350%
Unsheltered Unaccompanied Youth (up to 24)	--	4	0	2	2	0	0%
Total Unaccompanied Youth (up to 24)	--	14	5	4	11	7	175%

System Performance Measures Summary

	2014	2015	2016	2017	2018	2017-18 Change	% Change
Average Length of Time Homeless (days)	N/A	820	92	122	78	-44	-36.1%
Rate People Return to Homelessness in 6 Months	N/A	6.2%	4.4%	9.6%	10.1%	0.5%	N/A
Number of People who are Homeless for the First Time	N/A	1277	981	1098	1075	-23	-2.1%
Rate People Exit from ES, SH, TH, and RRH to PH	N/A	14.7%	23.9%	15.2%	22.1%	6.9%	N/A
Rate People in PSH and OPH Retain or Exit to PH	N/A	98.1%	84.6%	96.8%	96.8%	0%	N/A

Housing Inventory Count Summary

	2014	2015	2016	2017	2018	2017-18 Change	% Change
Emergency Shelter (ES)	215	205	176	154	149	-5	-3%
Transitional Housing (TH)	150	161	144	71	55	-16	-23%
Permanent Supportive Housing (PSH)	166	170	169	169	170	1	1%
Rapid Re-Housing (RRH)	--	--	--	80	0	-80	-100%
Other Permanent Housing (OPH)	--	--	--	--	15	--	--

Award Summary

	2014	2015	2016	2017	2018	2017-18 Change	% Change
Continuum of Care (CoC)	\$709,617	\$604,090	\$622,090	\$645,136	\$615,226	(\$29,910)	-5%
Emergency Solutions Grants (ESG)	\$142,880	\$151,819	\$152,133	\$150,876	\$148,479	(\$2,397)	-2%