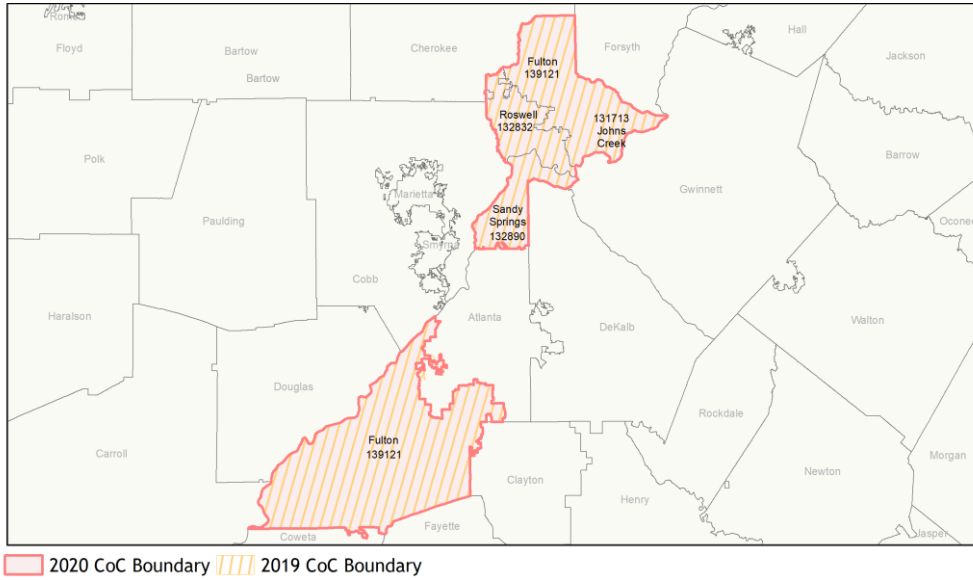
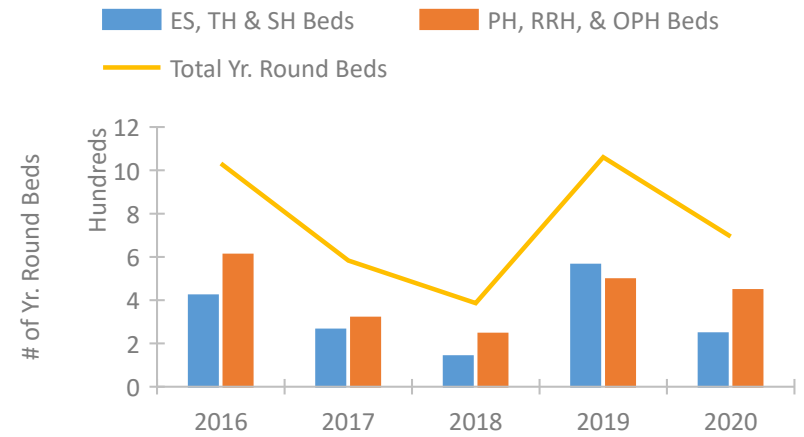


CoC Performance Profile GA-502

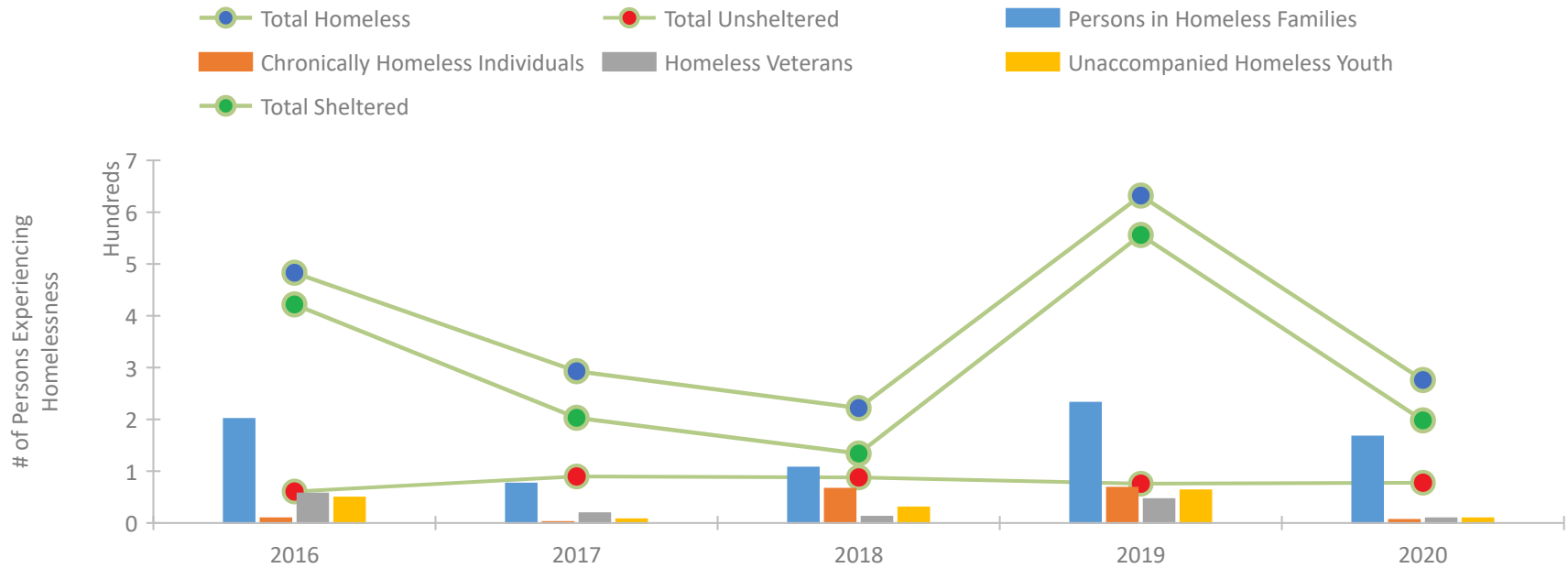
Fulton County CoC



Housing Inventory Count by Program Type

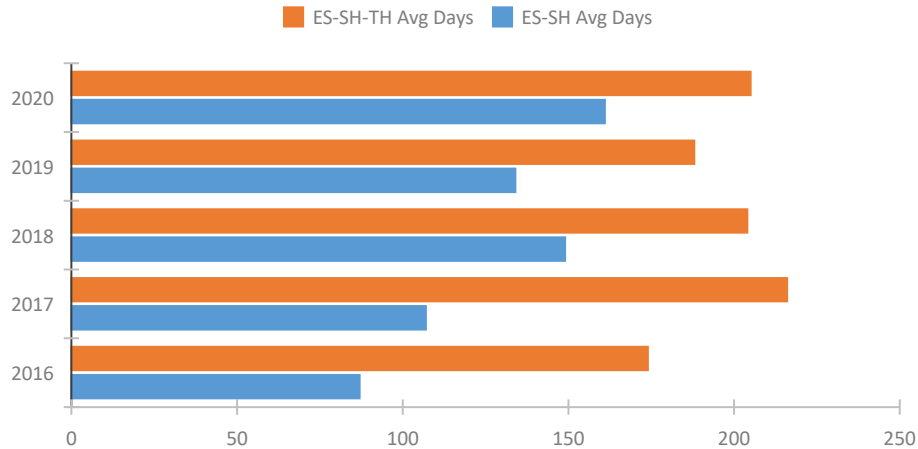


Homeless Population – Point-in-Time (PIT) Count

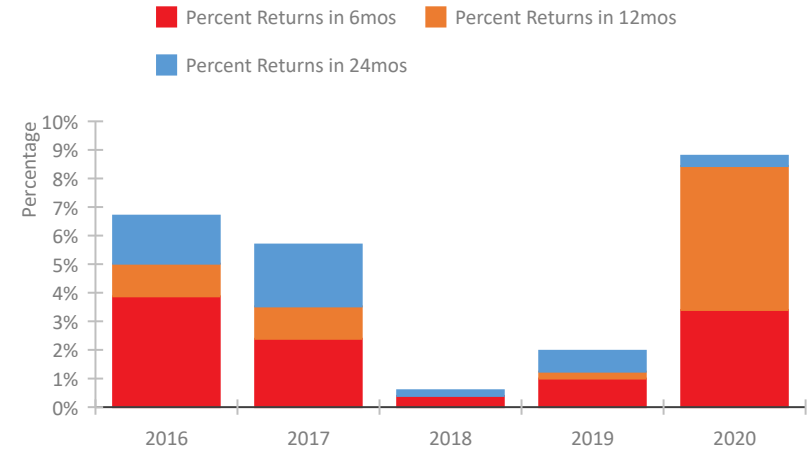


CoC Performance Profile GA-502 Fulton County CoC

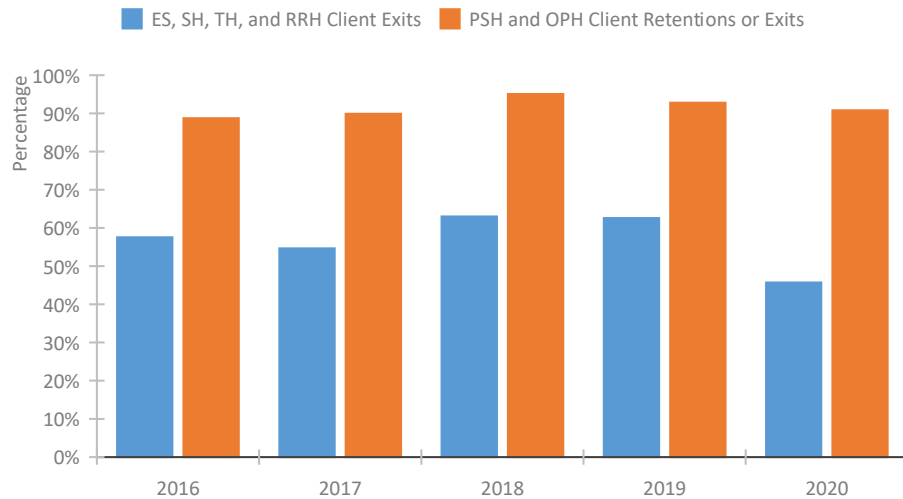
Length of Time Homeless



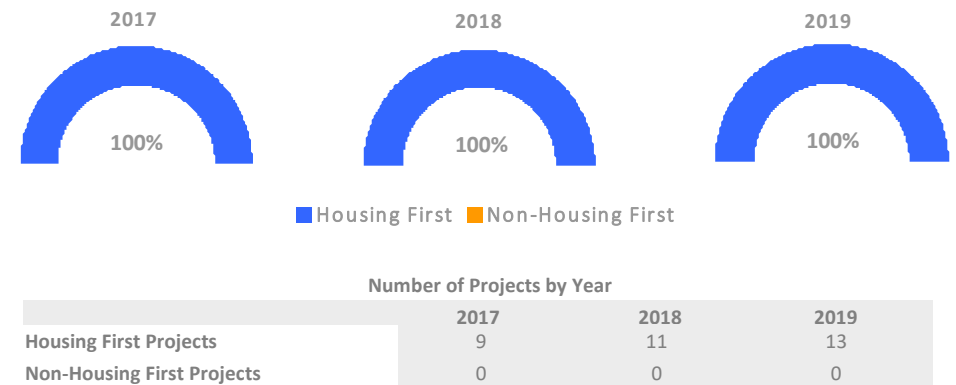
Returns to Homelessness Over Time



Exits to Permanent Housing by Program Type



Proportion of Housing First Projects by Year*



*In 2020 HUD awarded renewal projects noncompetitively, therefore no new data was collected and Housing First data remains the same from 2019 to 2020.

Data Summary: GA-502 Fulton County CoC

Point-In-Time Count Summary

	2016	2017	2018	2019	2020	2019-20 Change	% Change
Number of Sheltered Persons in Families	194	70	85	226	165	-61	-27%
Number of Unsheltered Persons in Families	7	6	22	6	2	-4	-67%
Number of Sheltered Individuals	228	133	49	330	33	-297	-90%
Number of Unsheltered Individuals	54	84	66	70	76	6	9%
Total Homeless Persons	483	293	222	632	276	-356	-56%
Number of Sheltered Families	64	25	29	64	57	-7	-11%
Number of Unsheltered Families	2	2	11	2	1	-1	-50%
Number of Total Families	66	27	40	66	58	-8	-12%
Sheltered Chronically Homeless Individuals	9	0	0	42	2	-40	-95%
Unsheltered Chronically Homeless Individuals	0	2	66	26	4	-22	-85%
Total Chronically Homeless Individuals	9	2	66	68	6	-62	-91%
Sheltered Veterans	57	18	12	43	6	-37	-86%
Unsheltered Veterans	0	1	0	3	3	0	-0%
Total Veterans	57	19	12	46	9	-37	-80%
Sheltered Unaccompanied Youth (up to 24)	40	3	24	54	4	-50	-93%
Unsheltered Unaccompanied Youth (up to 24)	9	4	6	9	5	-4	-44%
Total Unaccompanied Youth (up to 24)	49	7	30	63	9	-54	-86%

System Performance Measures Summary

	2016	2017	2018	2018	2020	2019-20 Change	% Change
Average Length of Time Homeless (days)	174	216	204	188	205	17	9%
Rate People Return to Homelessness in 6 Months	3.9%	2.4%	0.4%	1.0%	3.4%	2.4%	N/A
Number of People who are Homeless for the First Time	969	776	1,066	954	761	-193	-20.2%
Rate People Exit from ES, SH, TH, and RRH to PH	57.6%	54.6%	63.0%	62.6%	45.7%	-16.9%	N/A
Rate People in PSH and OPH Retain or Exit to PH	88.8%	89.9%	95.1%	92.8%	90.8%	-2%	N/A

Housing Inventory Count Summary

	2016	2017	2018	2019	2020	2019-20 Change	% Change
Emergency Shelter (ES)	126	119	74	471	67	-404	-86%
Transitional Housing (TH)	296	145	67	93	180	87	94%
Permanent Supportive Housing (PSH)	567	299	230	215	376	161	75%
Rapid Re-Housing (RRH)	--	15	15	282	71	-211	-75%

Award Summary

	2016	2017	2018	2019	2020	2019-20 Change	% Change
Continuum of Care (CoC)	\$2,604,210	\$2,570,781	\$2,497,367	\$2,430,457	\$2,534,150	\$103,693	4%
Emergency Solutions Grants (ESG)	\$178,159	\$180,601	\$182,909	\$162,596	\$166,641	\$4,045	2%