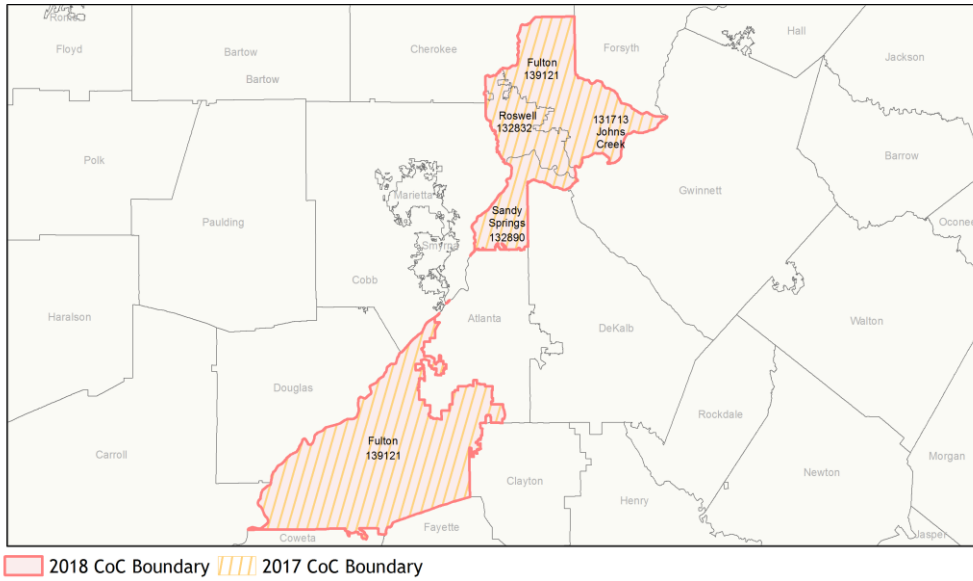
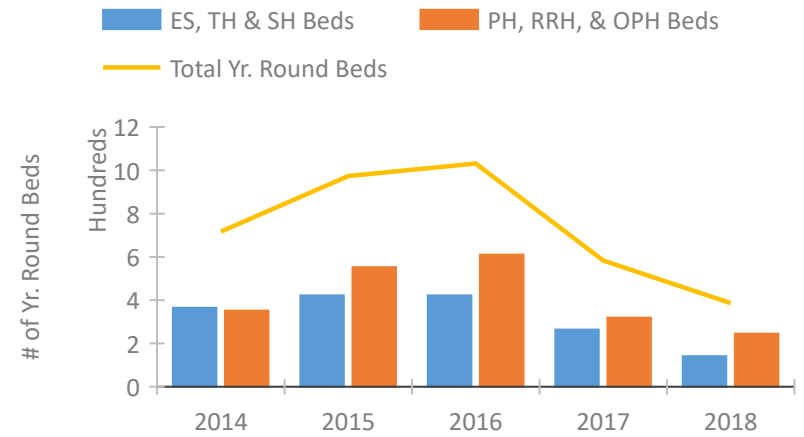


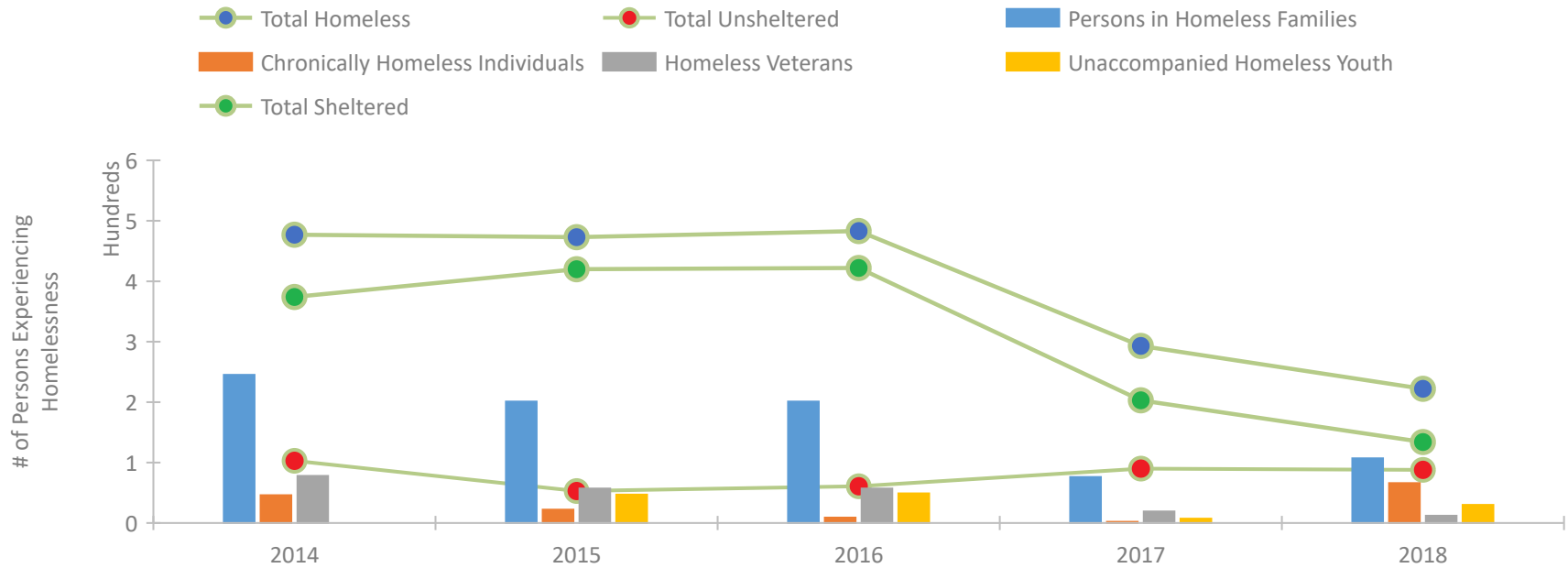
## CoC Performance Profile GA-502 Fulton County CoC



### Housing Inventory Count by Program Type

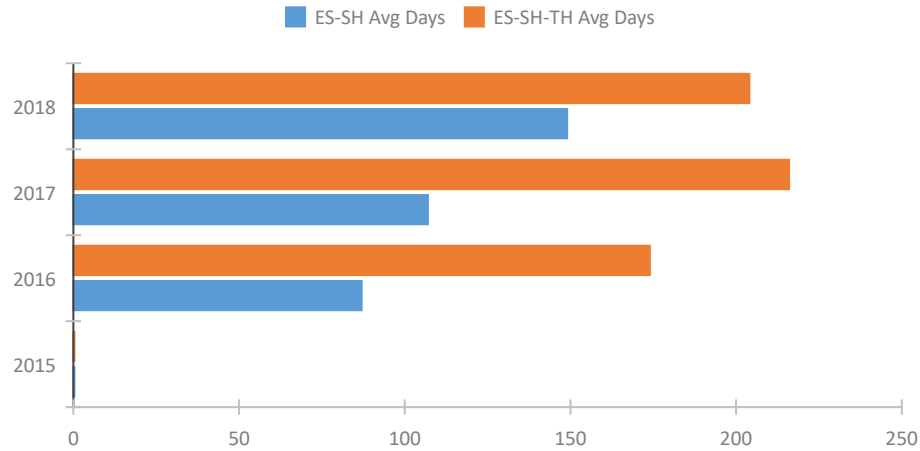


### Homeless Population – Point-in-Time (PIT) Count

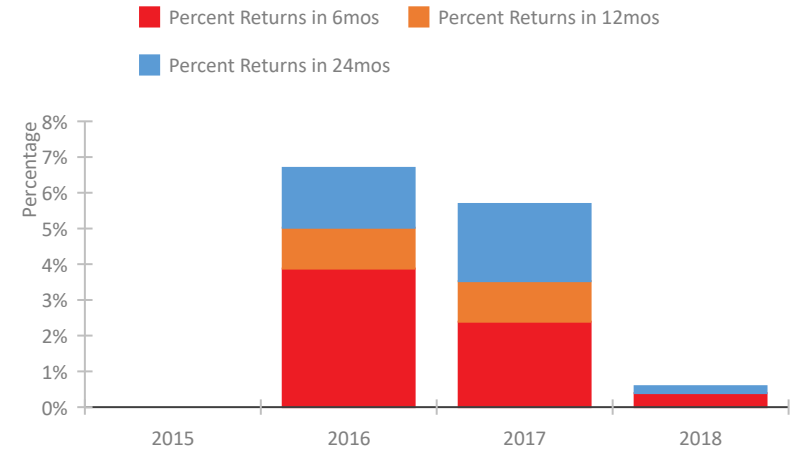


## CoC Performance Profile GA-502 Fulton County CoC

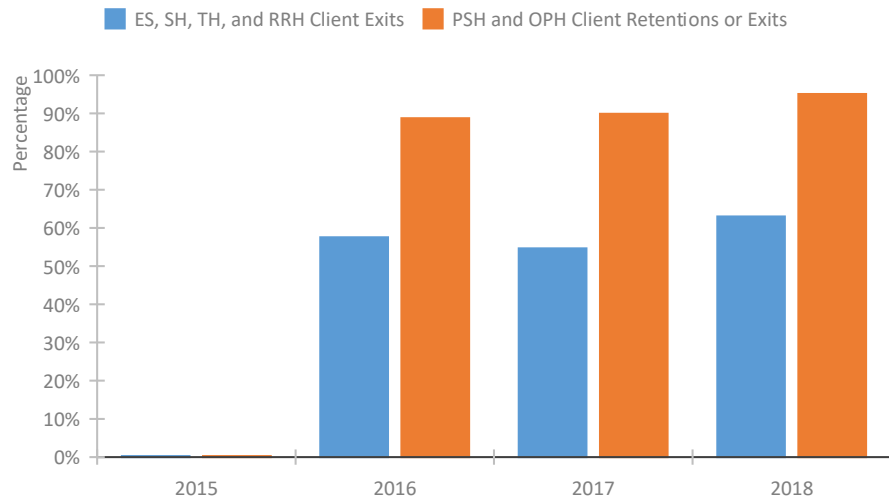
### Length of Time Homeless



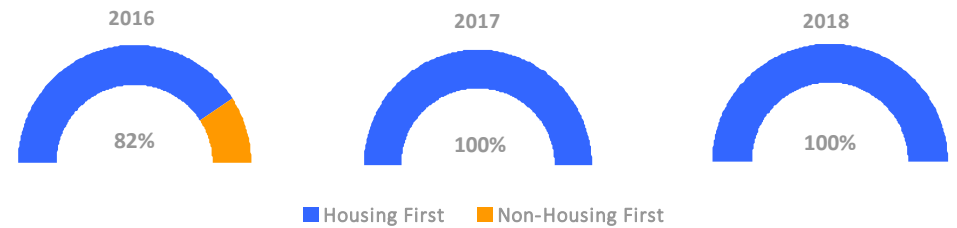
### Returns to Homelessness Over Time



### Exits to Permanent Housing by Program Type



### Proportion of Housing First Projects by Year



### Number of Projects by Year

	2016	2017	2018
Housing First Projects	9	9	11
Non-Housing First Projects	2	0	0

## Data Summary: GA-502 Fulton County CoC

### Point-In-Time Count Summary

	2014	2015	2016	2017	2018	2017-18 Change	% Change
Number of Sheltered Persons in Families	237	194	194	70	85	15	21%
Number of Unsheltered Persons in Families	8	7	7	6	22	16	267%
Number of Sheltered Individuals	137	226	228	133	49	-84	-63%
Number of Unsheltered Individuals	95	46	54	84	66	-18	-21%
<b>Total Homeless Persons</b>	<b>477</b>	<b>473</b>	<b>483</b>	<b>293</b>	<b>222</b>	<b>-71</b>	<b>-24%</b>
Number of Sheltered Families	83	71	64	25	29	4	16%
Number of Unsheltered Families	2	2	2	2	11	9	450%
<b>Number of Total Families</b>	<b>85</b>	<b>73</b>	<b>66</b>	<b>27</b>	<b>40</b>	<b>13</b>	<b>48%</b>
Sheltered Chronically Homeless Individuals	9	9	9	0	0	0	--
Unsheltered Chronically Homeless Individuals	37	13	0	2	66	64	3200%
<b>Total Chronically Homeless Individuals</b>	<b>46</b>	<b>22</b>	<b>9</b>	<b>2</b>	<b>66</b>	<b>64</b>	<b>3200%</b>
Sheltered Veterans	55	57	57	18	12	-6	-33%
Unsheltered Veterans	23	0	0	1	0	-1	-100%
<b>Total Veterans</b>	<b>78</b>	<b>57</b>	<b>57</b>	<b>19</b>	<b>12</b>	<b>-7</b>	<b>-37%</b>
Sheltered Unaccompanied Youth (up to 24)	--	46	40	3	24	21	700%
Unsheltered Unaccompanied Youth (up to 24)	--	1	9	4	6	2	50%
<b>Total Unaccompanied Youth (up to 24)</b>	<b>--</b>	<b>47</b>	<b>49</b>	<b>7</b>	<b>30</b>	<b>23</b>	<b>329%</b>

### System Performance Measures Summary

	2014	2015	2016	2017	2018	2017-18 Change	% Change
Average Length of Time Homeless (days)	N/A	0	174	216	204	-12	-5.6%
Rate People Return to Homelessness in 6 Months	N/A	--	3.9%	2.4%	0.4%	-2%	N/A
Number of People who are Homeless for the First Time	N/A	0	969	776	1066	290	37.4%
Rate People Exit from ES, SH, TH, and RRH to PH	N/A	--	57.6%	54.6%	63.0%	8.4%	N/A
Rate People in PSH and OPH Retain or Exit to PH	N/A	--	88.8%	89.9%	95.1%	5.2%	N/A

### Housing Inventory Count Summary

	2014	2015	2016	2017	2018	2017-18 Change	% Change
Emergency Shelter (ES)	56	126	126	119	74	-45	-38%
Transitional Housing (TH)	309	296	296	145	67	-78	-54%
Permanent Supportive Housing (PSH)	336	509	567	299	230	-69	-23%
Rapid Re-Housing (RRH)	16	--	--	15	15	0	0%

### Award Summary

	2014	2015	2016	2017	2018	2017-18 Change	% Change
<b>Continuum of Care (CoC)</b>	\$2,808,355	\$2,795,919	\$2,604,210	\$2,570,781	\$2,497,367	(\$73,414)	-3%
<b>Emergency Solutions Grants (ESG)</b>	\$136,276	\$149,475	\$178,159	\$180,601	\$182,909	\$2,308	1%