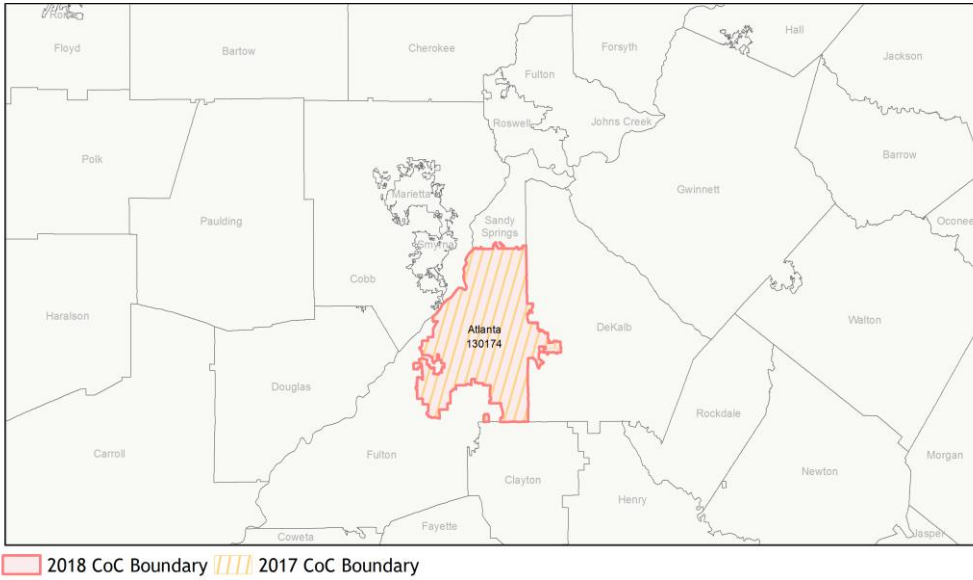
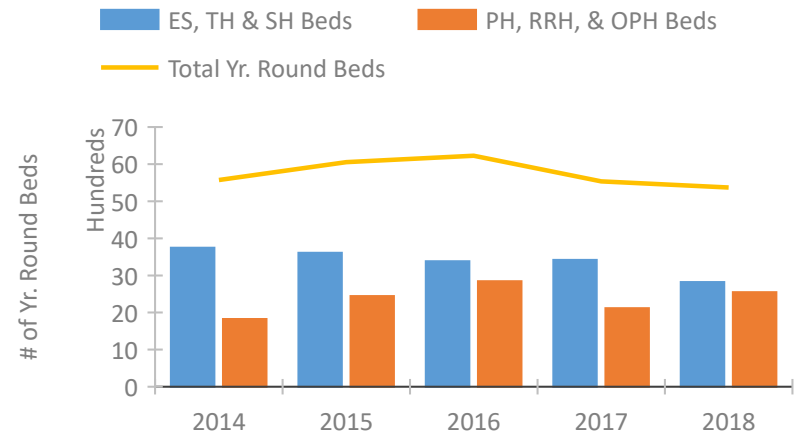


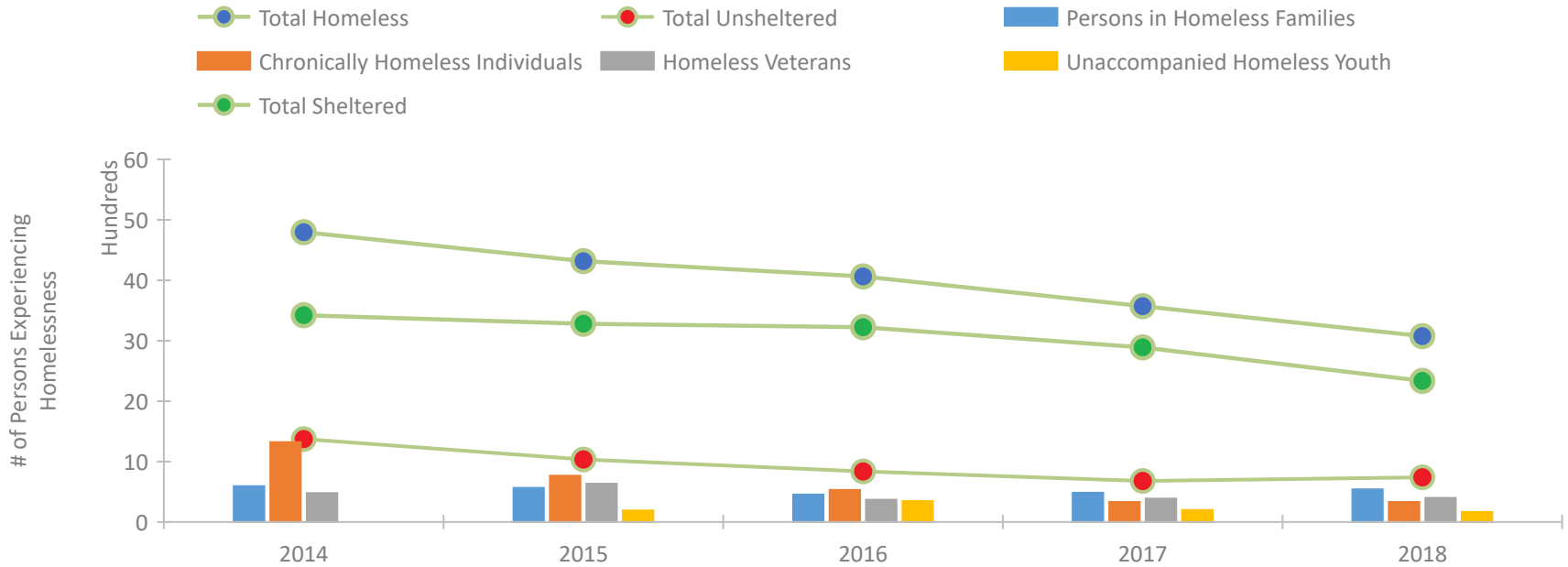
CoC Performance Profile GA-500 Atlanta CoC



Housing Inventory Count by Program Type

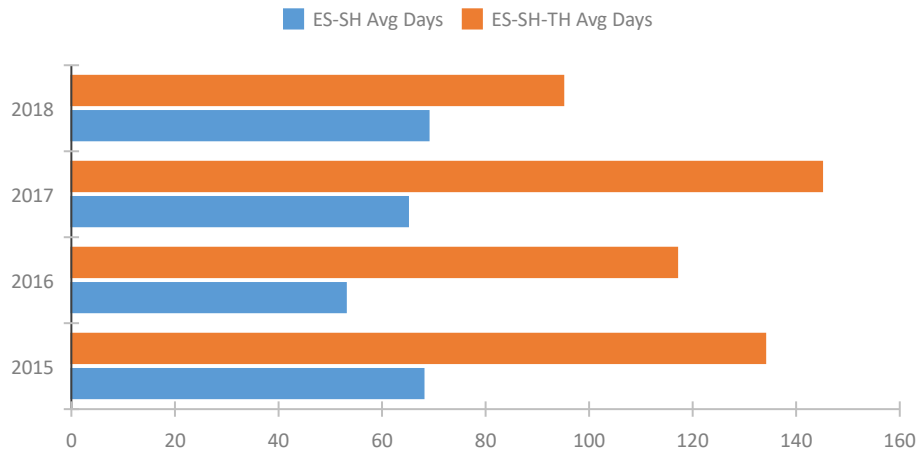


Homeless Population – Point-in-Time (PIT) Count

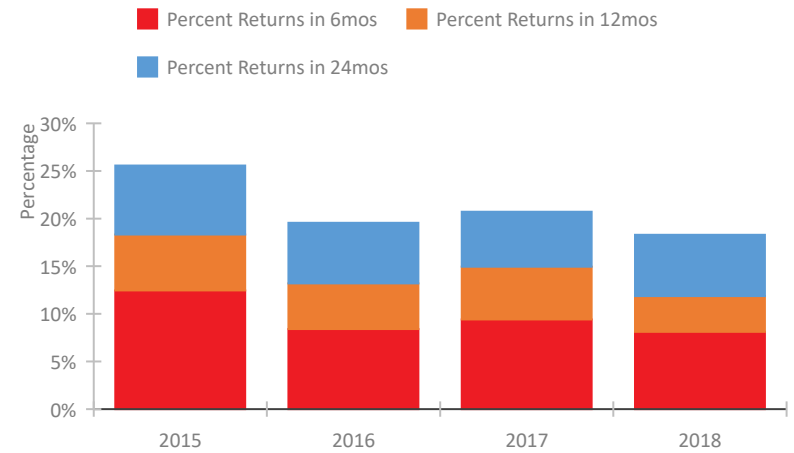


CoC Performance Profile GA-500 Atlanta CoC

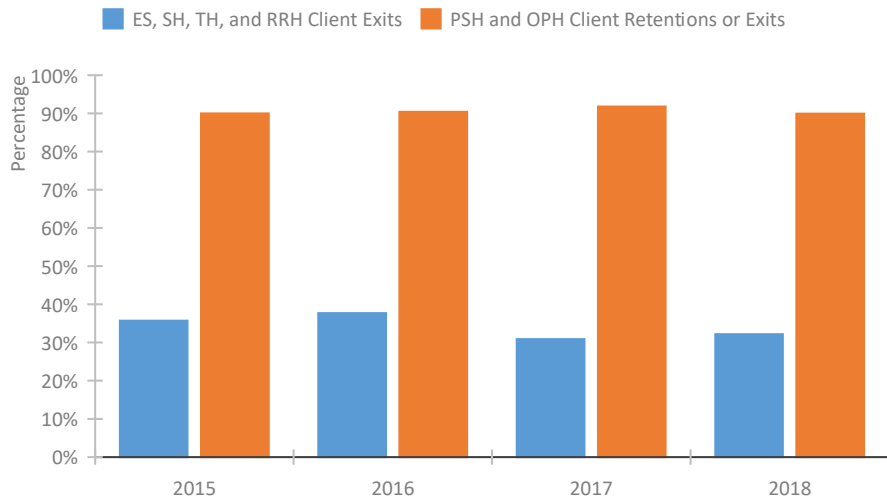
Length of Time Homeless



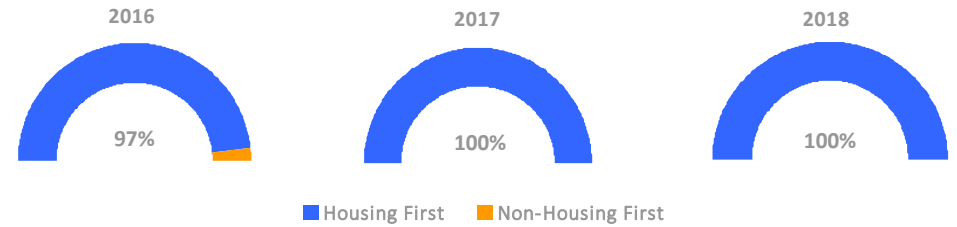
Returns to Homelessness Over Time



Exits to Permanent Housing by Program Type



Proportion of Housing First Projects by Year



Number of Projects by Year

	2016	2017	2018
Housing First Projects	28	30	29
Non-Housing First Projects	1	0	0

Data Summary: GA-500 Atlanta CoC

Point-In-Time Count Summary

	2014	2015	2016	2017	2018	2017-18 Change	% Change
Number of Sheltered Persons in Families	555	559	394	469	532	63	13%
Number of Unsheltered Persons in Families	39	6	59	14	8	-6	-43%
Number of Sheltered Individuals	2,867	2,721	2,831	2,422	1,804	-618	-26%
Number of Unsheltered Individuals	1,336	1,031	779	667	732	65	10%
Total Homeless Persons	4,797	4,317	4,063	3,572	3,076	-496	-14%
Number of Sheltered Families	170	184	122	158	163	5	3%
Number of Unsheltered Families	12	3	19	5	3	-2	-40%
Number of Total Families	182	187	141	163	166	3	2%
Sheltered Chronically Homeless Individuals	616	400	280	207	101	-106	-51%
Unsheltered Chronically Homeless Individuals	706	365	251	125	230	105	84%
Total Chronically Homeless Individuals	1,322	765	531	332	331	-1	0%
Sheltered Veterans	276	482	366	321	303	-18	-6%
Unsheltered Veterans	201	151	3	65	96	31	48%
Total Veterans	477	633	369	386	399	13	3%
Sheltered Unaccompanied Youth (up to 24)	--	150	329	181	137	-44	-24%
Unsheltered Unaccompanied Youth (up to 24)	--	41	18	18	28	10	56%
Total Unaccompanied Youth (up to 24)	--	191	347	199	165	-34	-17%

System Performance Measures Summary

	2014	2015	2016	2017	2018	2017-18 Change	% Change
Average Length of Time Homeless (days)	N/A	134	117	145	95	-50	-34.5%
Rate People Return to Homelessness in 6 Months	N/A	12.5%	8.4%	9.4%	8.1%	-1.3%	N/A
Number of People who are Homeless for the First Time	N/A	9739	8058	7115	7175	60	0.8%
Rate People Exit from ES, SH, TH, and RRH to PH	N/A	35.7%	37.7%	30.9%	32.2%	1.3%	N/A
Rate People in PSH and OPH Retain or Exit to PH	N/A	90.0%	90.4%	91.8%	89.9%	-1.8%	N/A

Housing Inventory Count Summary

	2014	2015	2016	2017	2018	2017-18 Change	% Change
Emergency Shelter (ES)	2,027	1,643	1,621	1,768	1,155	-613	-35%
Transitional Housing (TH)	1,720	1,966	1,763	1,651	1,666	15	1%
Permanent Supportive Housing (PSH)	1,677	2,247	2,325	1,941	1,898	-43	-2%
Rapid Re-Housing (RRH)	149	197	519	177	652	475	268%

Award Summary

	2014	2015	2016	2017	2018	2017-18 Change	% Change
Continuum of Care (CoC)	\$6,959,507	\$6,921,341	\$6,979,344	\$7,244,948	\$7,533,177	\$288,229	4%
Emergency Solutions Grants (ESG)	\$579,189	\$611,614	\$605,049	\$901,503	\$595,393	(\$306,110)	-34%