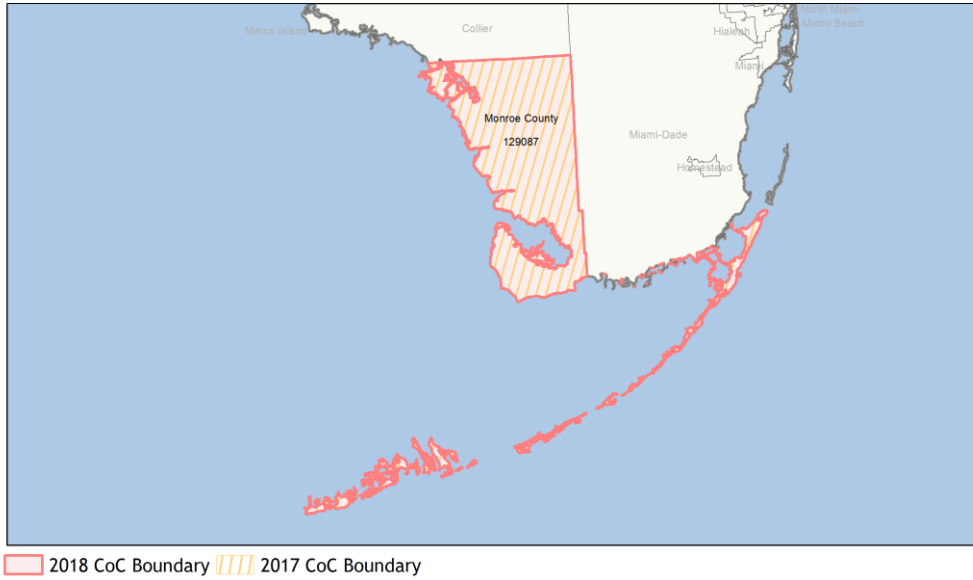
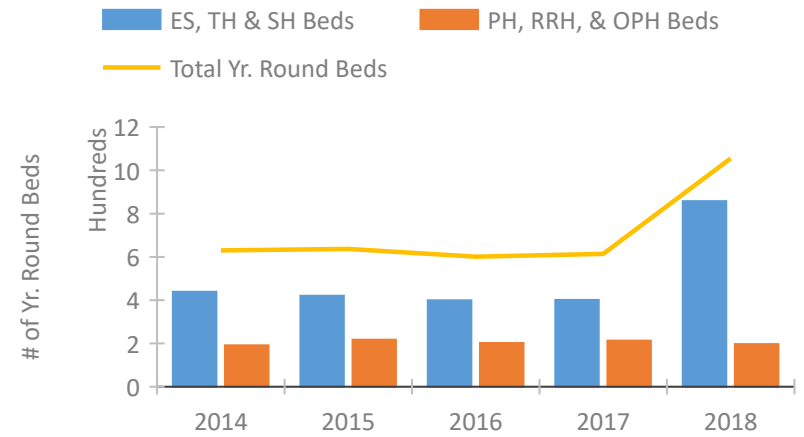


CoC Performance Profile FL-604

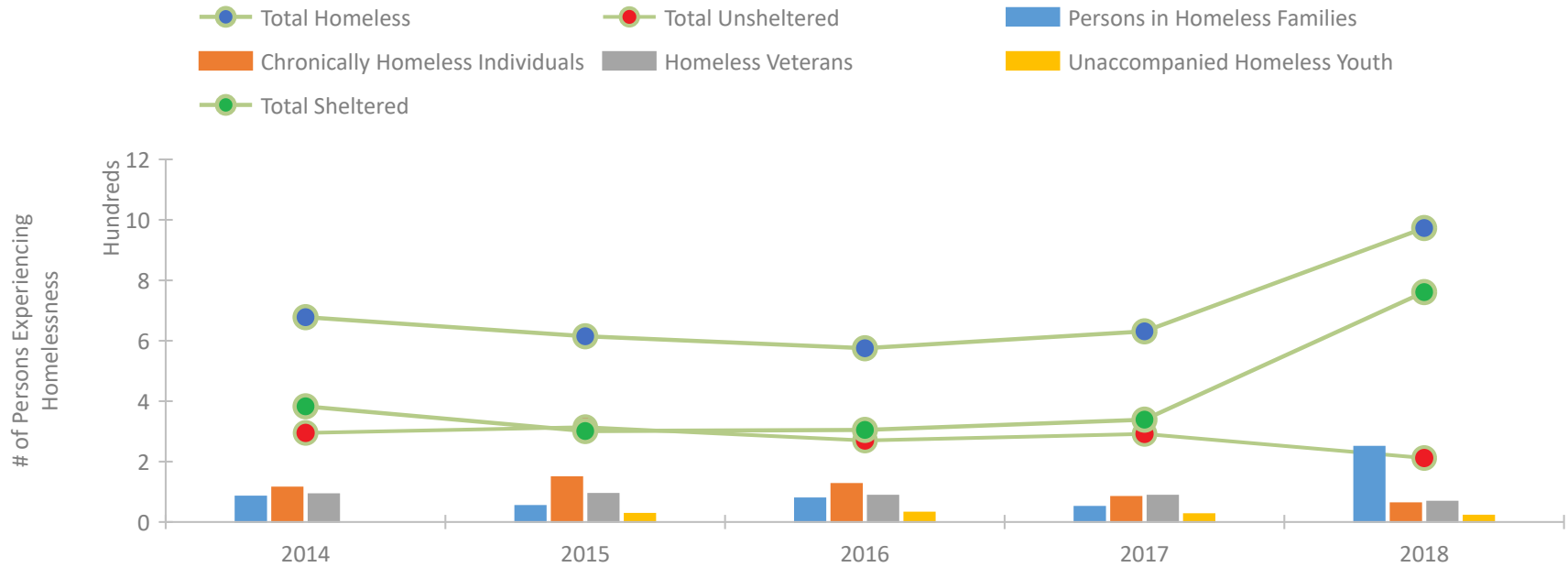
Monroe County CoC



Housing Inventory Count by Program Type

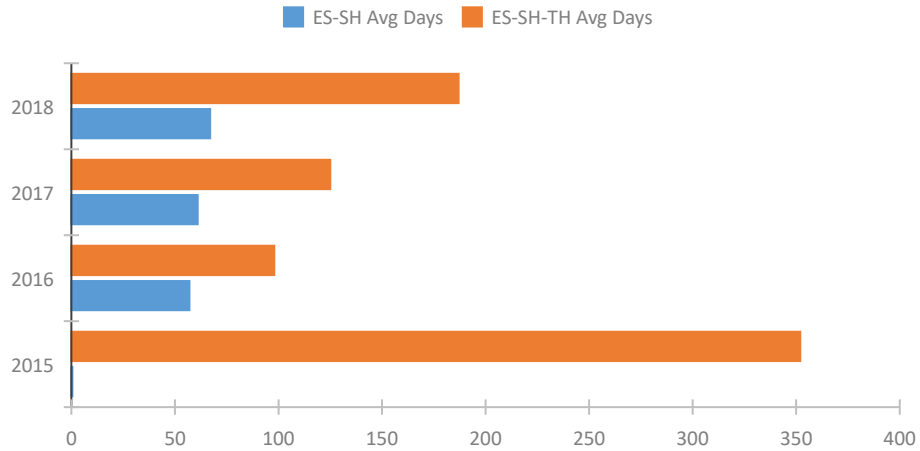


Homeless Population – Point-in-Time (PIT) Count

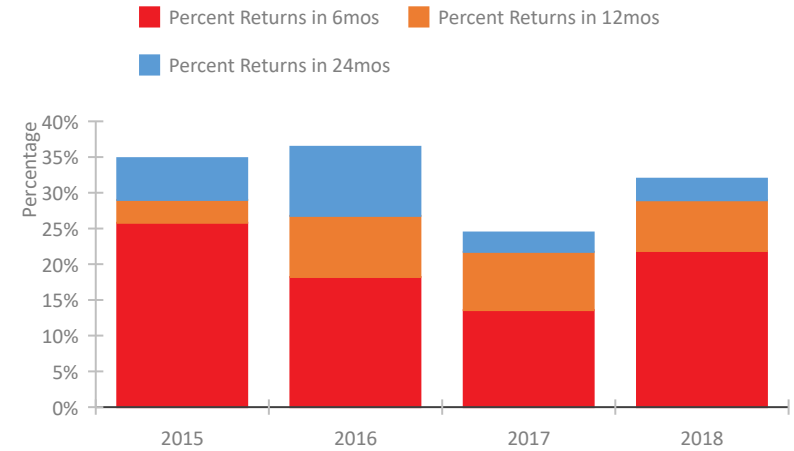


CoC Performance Profile FL-604 Monroe County CoC

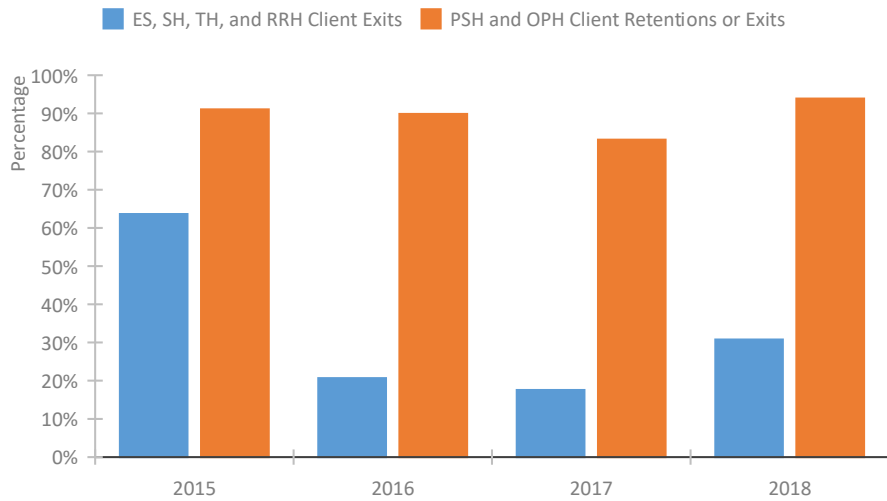
Length of Time Homeless



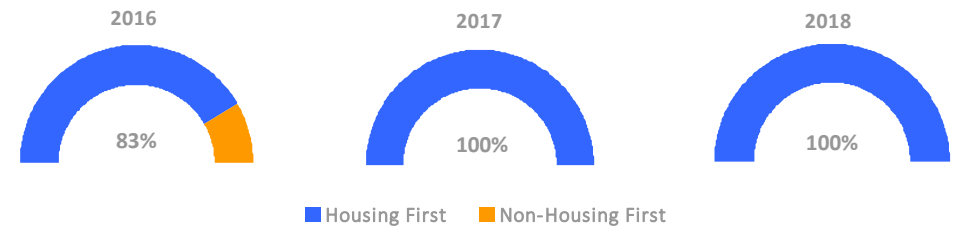
Returns to Homelessness Over Time



Exits to Permanent Housing by Program Type



Proportion of Housing First Projects by Year



Number of Projects by Year			
	2016	2017	2018
Housing First Projects	5	7	7
Non-Housing First Projects	1	0	0

Data Summary: FL-604 Monroe County CoC

Point-In-Time Count Summary

	2014	2015	2016	2017	2018	2017-18 Change	% Change
Number of Sheltered Persons in Families	59	41	46	47	214	167	355%
Number of Unsheltered Persons in Families	25	12	32	3	35	32	1067%
Number of Sheltered Individuals	324	260	259	292	547	255	87%
Number of Unsheltered Individuals	270	302	238	289	177	-112	-39%
Total Homeless Persons	678	615	575	631	973	342	54%
Number of Sheltered Families	22	15	14	17	64	47	276%
Number of Unsheltered Families	6	4	9	1	10	9	900%
Number of Total Families	28	19	23	18	74	56	311%
Sheltered Chronically Homeless Individuals	23	30	8	1	37	36	3600%
Unsheltered Chronically Homeless Individuals	91	118	118	82	25	-57	-70%
Total Chronically Homeless Individuals	114	148	126	83	62	-21	-25%
Sheltered Veterans	36	34	45	57	22	-35	-61%
Unsheltered Veterans	56	59	42	30	45	15	50%
Total Veterans	92	93	87	87	67	-20	-23%
Sheltered Unaccompanied Youth (up to 24)	--	9	13	18	16	-2	-11%
Unsheltered Unaccompanied Youth (up to 24)	--	18	18	8	5	-3	-38%
Total Unaccompanied Youth (up to 24)	--	27	31	26	21	-5	-19%

System Performance Measures Summary

	2014	2015	2016	2017	2018	2017-18 Change	% Change
Average Length of Time Homeless (days)	N/A	352	98	125	187	62	49.6%
Rate People Return to Homelessness in 6 Months	N/A	25.8%	18.2%	13.6%	21.9%	8.3%	N/A
Number of People who are Homeless for the First Time	N/A	872	1309	789	544	-245	-31.1%
Rate People Exit from ES, SH, TH, and RRH to PH	N/A	63.7%	20.7%	17.6%	30.8%	13.2%	N/A
Rate People in PSH and OPH Retain or Exit to PH	N/A	91.0%	89.8%	83.1%	93.9%	10.8%	N/A

Housing Inventory Count Summary

	2014	2015	2016	2017	2018	2017-18 Change	% Change
Emergency Shelter (ES)	268	268	247	251	730	479	191%
Transitional Housing (TH)	171	152	152	150	128	-22	-15%
Permanent Supportive Housing (PSH)	191	201	191	202	186	-16	-8%
Other Permanent Housing (OPH)	--	16	11	11	11	0	0%

Award Summary

	2014	2015	2016	2017	2018	2017-18 Change	% Change
Continuum of Care (CoC)	\$528,073	\$448,854	\$471,296	\$493,681	\$491,912	(\$1,769)	0%
ESG (FL state recipient - no direct funding)	\$4,605,599	\$5,019,268	\$5,098,790	\$5,183,540	\$5,380,797	\$197,257	4%