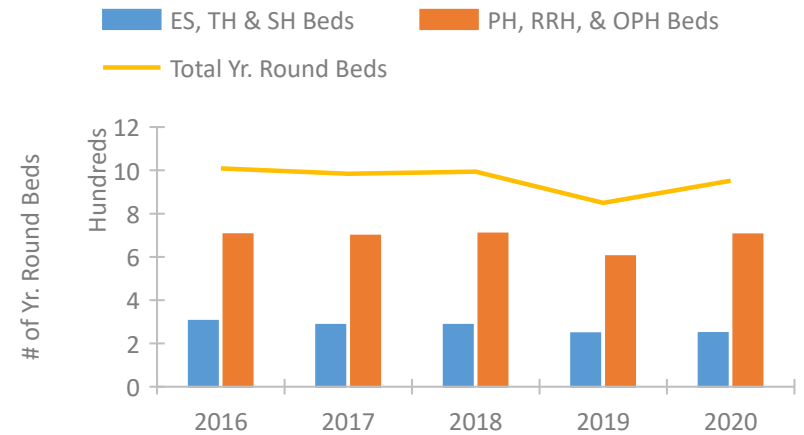


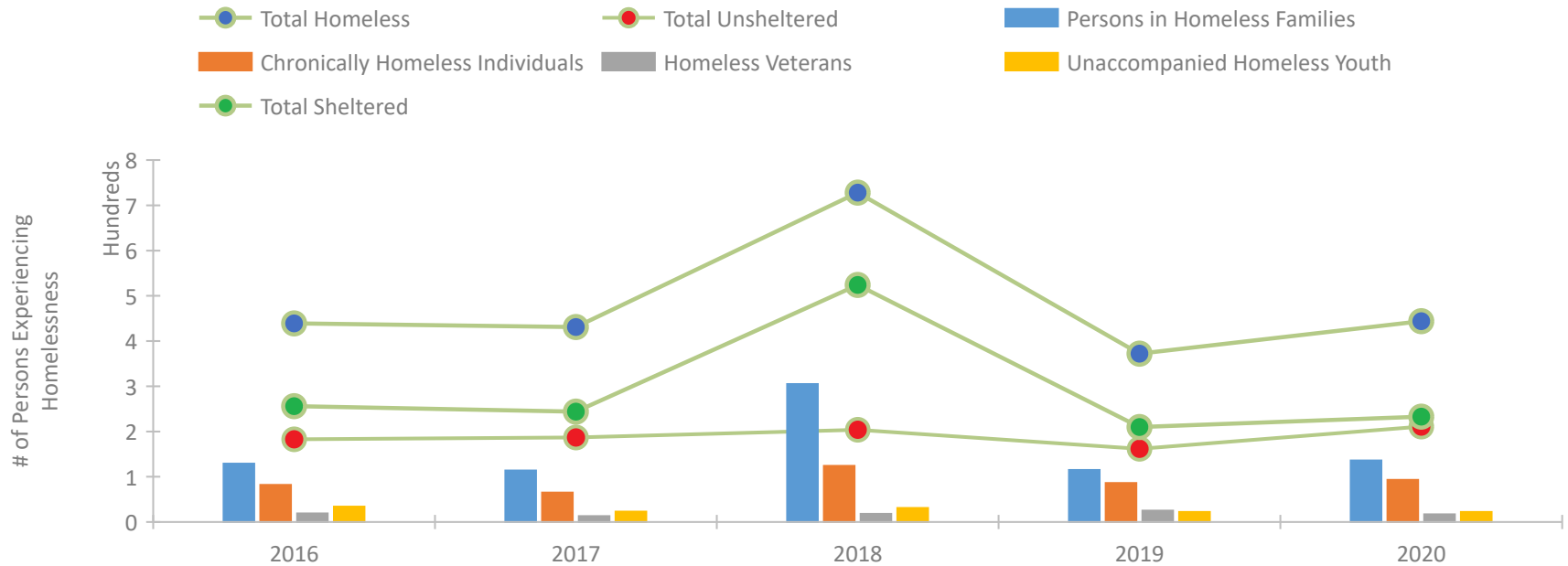
CoC Performance Profile FL-603 Ft Myers, Cape Coral/Lee County CoC



Housing Inventory Count by Program Type

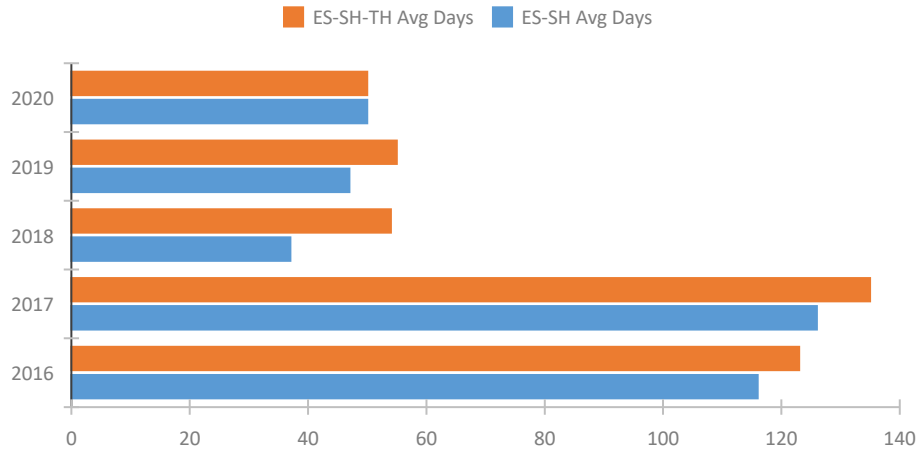


Homeless Population – Point-in-Time (PIT) Count

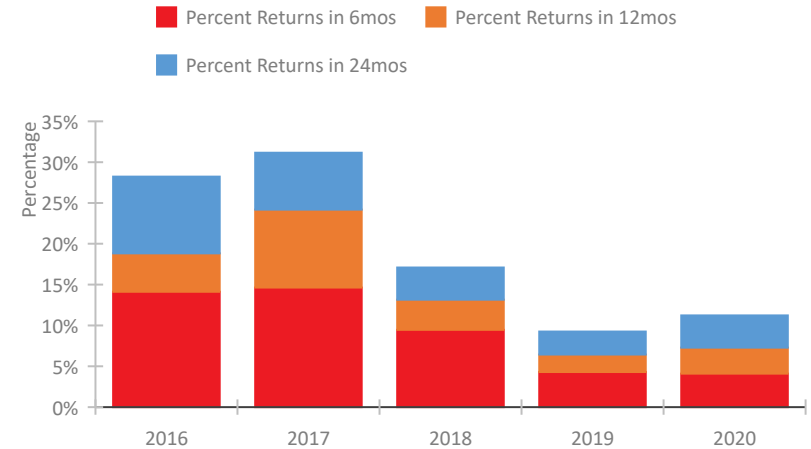


CoC Performance Profile FL-603 Ft Myers, Cape Coral/Lee County CoC

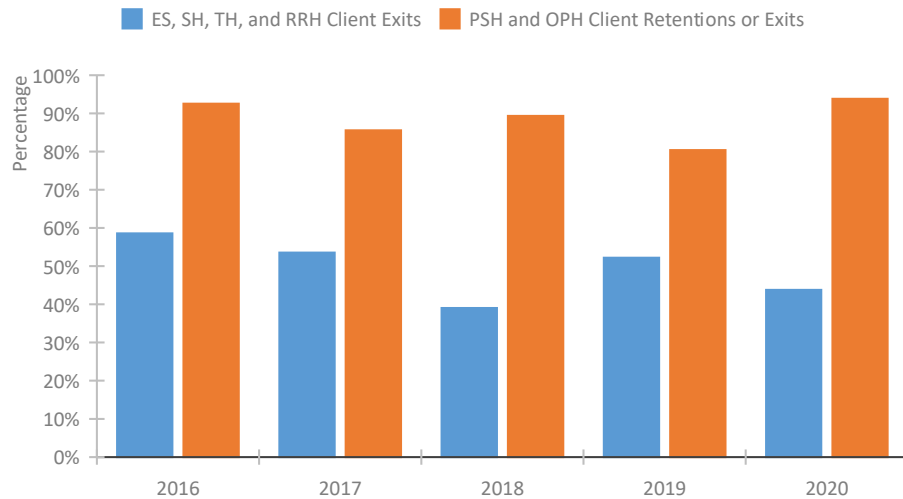
Length of Time Homeless



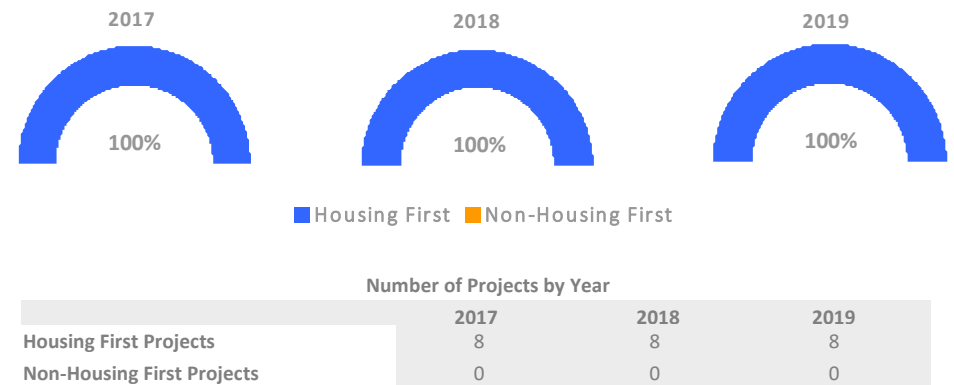
Returns to Homelessness Over Time



Exits to Permanent Housing by Program Type



Proportion of Housing First Projects by Year*



*In 2020 HUD awarded renewal projects noncompetitively, therefore no new data was collected and Housing First data remains the same from 2019 to 2020.

Data Summary: FL-603 Ft Myers, Cape Coral/Lee County CoC

Point-In-Time Count Summary

	2016	2017	2018	2019	2020	2019-20 Change	% Change
Number of Sheltered Persons in Families	94	102	274	81	118	37	46%
Number of Unsheltered Persons in Families	35	12	31	34	18	-16	-47%
Number of Sheltered Individuals	162	142	250	129	115	-14	-11%
Number of Unsheltered Individuals	148	175	173	128	193	65	51%
Total Homeless Persons	439	431	728	372	444	72	19%
Number of Sheltered Families	30	32	73	22	29	7	32%
Number of Unsheltered Families	7	3	7	8	5	-3	-38%
Number of Total Families	37	35	80	30	34	4	13%
Sheltered Chronically Homeless Individuals	20	21	32	18	7	-11	-61%
Unsheltered Chronically Homeless Individuals	62	44	92	68	86	18	26%
Total Chronically Homeless Individuals	82	65	124	86	93	7	8%
Sheltered Veterans	12	4	7	11	5	-6	-55%
Unsheltered Veterans	7	9	11	14	12	-2	-14%
Total Veterans	19	13	18	25	17	-8	-32%
Sheltered Unaccompanied Youth (up to 24)	24	18	22	15	17	2	13%
Unsheltered Unaccompanied Youth (up to 24)	10	5	9	7	5	-2	-29%
Total Unaccompanied Youth (up to 24)	34	23	31	22	22	0	-0%

System Performance Measures Summary

	2016	2017	2018	2018	2020	2019-20 Change	% Change
Average Length of Time Homeless (days)	123	135	54	55	50	-5	-9.1%
Rate People Return to Homelessness in 6 Months	14.1%	14.7%	9.5%	4.3%	4.1%	-0.2%	N/A
Number of People who are Homeless for the First Time	1,324	1,012	1,345	946	984	38	4%
Rate People Exit from ES, SH, TH, and RRH to PH	58.6%	53.6%	39.0%	52.2%	43.8%	-8.4%	N/A
Rate People in PSH and OPH Retain or Exit to PH	92.5%	85.6%	89.3%	80.4%	93.8%	13.4%	N/A

Housing Inventory Count Summary

	2016	2017	2018	2019	2020	2019-20 Change	% Change
Emergency Shelter (ES)	249	231	231	231	244	13	6%
Transitional Housing (TH)	55	55	55	16	4	-12	-75%
Permanent Supportive Housing (PSH)	431	387	466	436	449	13	3%
Rapid Re-Housing (RRH)	274	311	242	146	194	48	33%
Other Permanent Housing (OPH)	--	--	--	21	61	40	190%

Award Summary

	2016	2017	2018	2019	2020	2019-20 Change	% Change
Continuum of Care (CoC)	\$1,661,056	\$1,739,532	\$1,835,581	\$1,825,537	\$1,997,727	\$172,190	9%
Emergency Solutions Grants (ESG)	\$228,418	\$605,383	\$238,555	\$255,297	\$267,778	\$12,481	5%