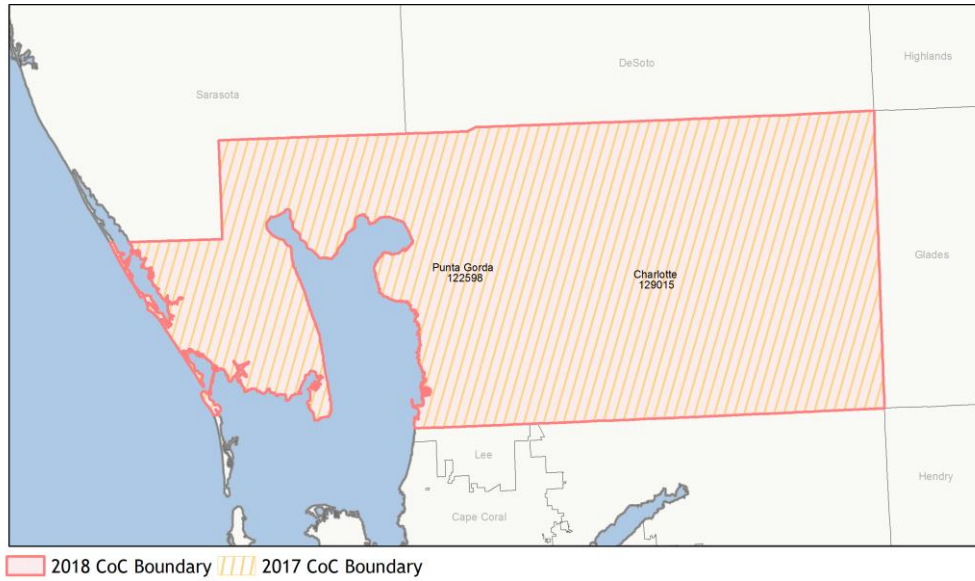
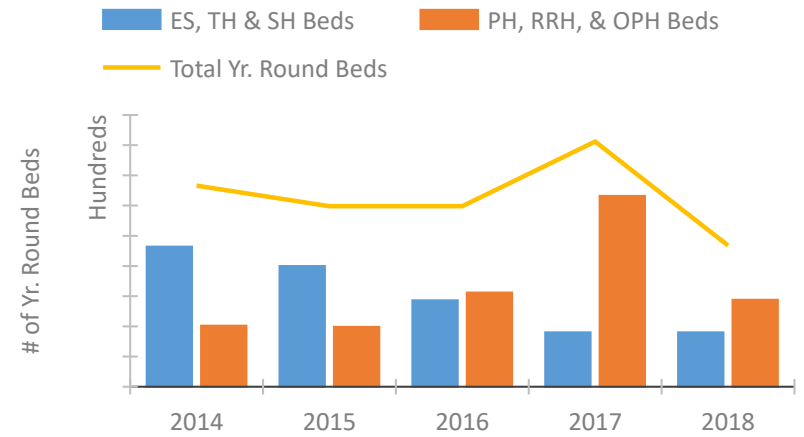


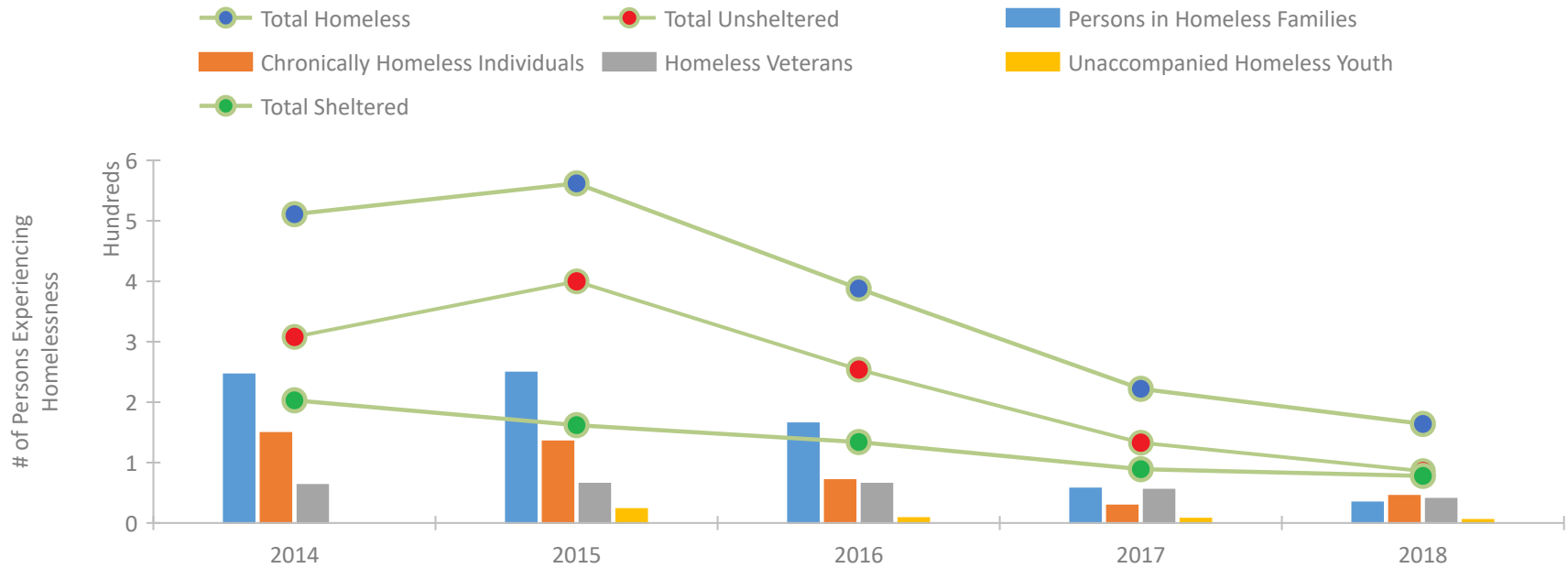
CoC Performance Profile FL-602 Punta Gorda/Charlotte County CoC



Housing Inventory Count by Program Type

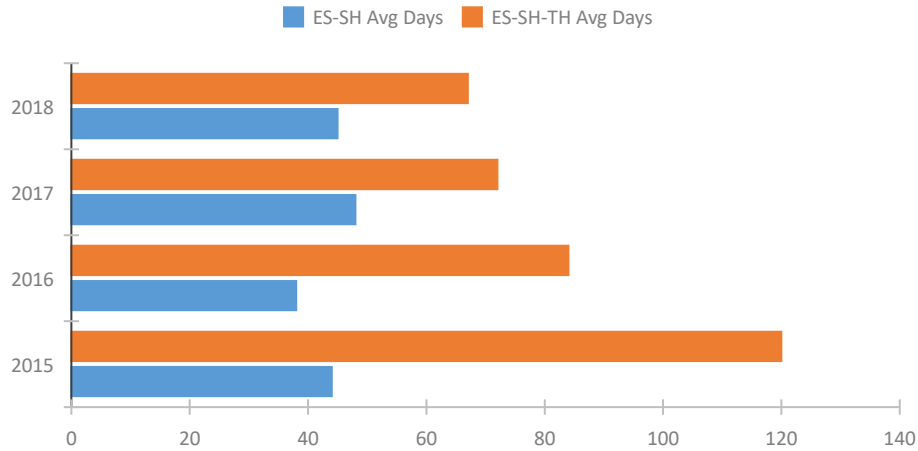


Homeless Population – Point-in-Time (PIT) Count

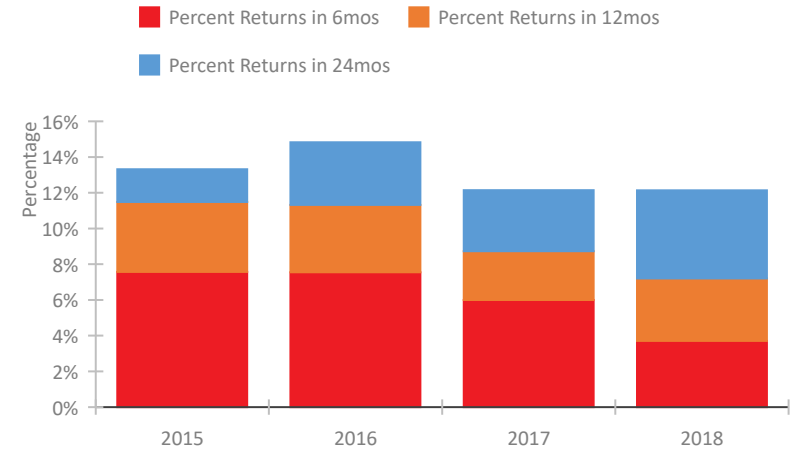


CoC Performance Profile FL-602 Punta Gorda/Charlotte County CoC

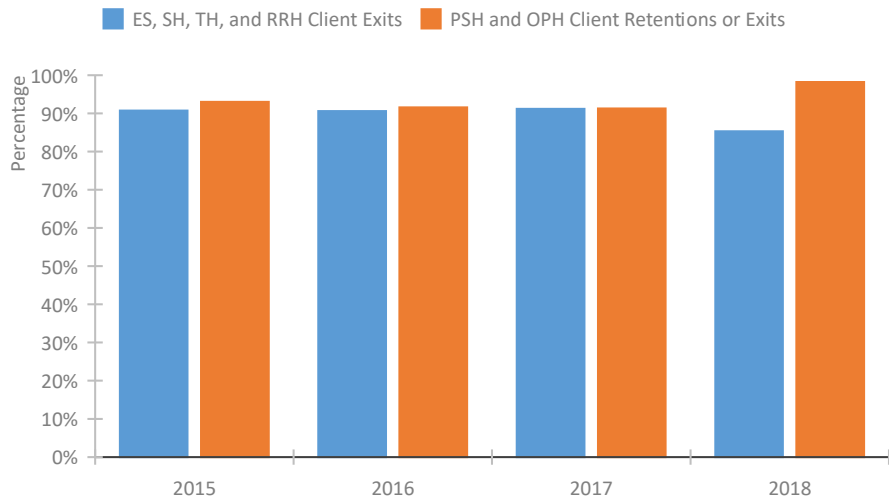
Length of Time Homeless



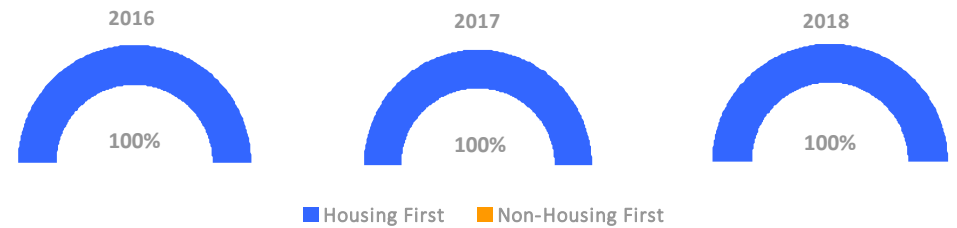
Returns to Homelessness Over Time



Exits to Permanent Housing by Program Type



Proportion of Housing First Projects by Year



Number of Projects by Year

	2016	2017	2018
Housing First Projects	2	2	2
Non-Housing First Projects	0	0	0

Data Summary: FL-602 Punta Gorda/Charlotte County CoC

Point-In-Time Count Summary

	2014	2015	2016	2017	2018	2017-18 Change	% Change
Number of Sheltered Persons in Families	113	89	55	25	24	-1	-4%
Number of Unsheltered Persons in Families	133	160	110	32	10	-22	-69%
Number of Sheltered Individuals	90	73	79	64	54	-10	-16%
Number of Unsheltered Individuals	175	240	144	101	76	-25	-25%
Total Homeless Persons	511	562	388	222	164	-58	-26%
Number of Sheltered Families	39	21	15	7	7	0	0%
Number of Unsheltered Families	27	63	40	6	1	-5	-83%
Number of Total Families	66	84	55	13	8	-5	-38%
Sheltered Chronically Homeless Individuals	12	4	5	4	11	7	175%
Unsheltered Chronically Homeless Individuals	137	131	66	25	34	9	36%
Total Chronically Homeless Individuals	149	135	71	29	45	16	55%
Sheltered Veterans	35	36	55	53	39	-14	-26%
Unsheltered Veterans	28	29	10	2	1	-1	-50%
Total Veterans	63	65	65	55	40	-15	-27%
Sheltered Unaccompanied Youth (up to 24)	--	23	3	3	0	-3	-100%
Unsheltered Unaccompanied Youth (up to 24)	--	0	5	4	5	1	25%
Total Unaccompanied Youth (up to 24)	--	23	8	7	5	-2	-29%

System Performance Measures Summary

	2014	2015	2016	2017	2018	2017-18 Change	% Change
Average Length of Time Homeless (days)	N/A	120	84	72	67	-5	-6.9%
Rate People Return to Homelessness in 6 Months	N/A	7.6%	7.5%	6.0%	3.7%	-2.3%	N/A
Number of People who are Homeless for the First Time	N/A	667	622	505	401	-104	-20.6%
Rate People Exit from ES, SH, TH, and RRH to PH	N/A	90.7%	90.6%	91.2%	85.3%	-5.9%	N/A
Rate People in PSH and OPH Retain or Exit to PH	N/A	93.0%	91.6%	91.3%	98.2%	6.9%	N/A

Housing Inventory Count Summary

	2014	2015	2016	2017	2018	2017-18 Change	% Change
Emergency Shelter (ES)	72	74	66	66	66	0	0%
Transitional Housing (TH)	156	122	73	24	24	0	0%
Permanent Supportive Housing (PSH)	62	23	117	65	93	28	43%
Rapid Re-Housing (RRH)	--	--	33	251	51	-200	-80%

Award Summary

	2014	2015	2016	2017	2018	2017-18 Change	% Change
Continuum of Care (CoC)	\$218,035	\$188,639	\$189,201	\$207,098	\$258,810	\$51,712	25%
ESG (FL state recipient - no direct funding)	\$4,605,599	\$5,019,268	\$5,098,790	\$5,183,540	\$5,380,797	\$197,257	4%