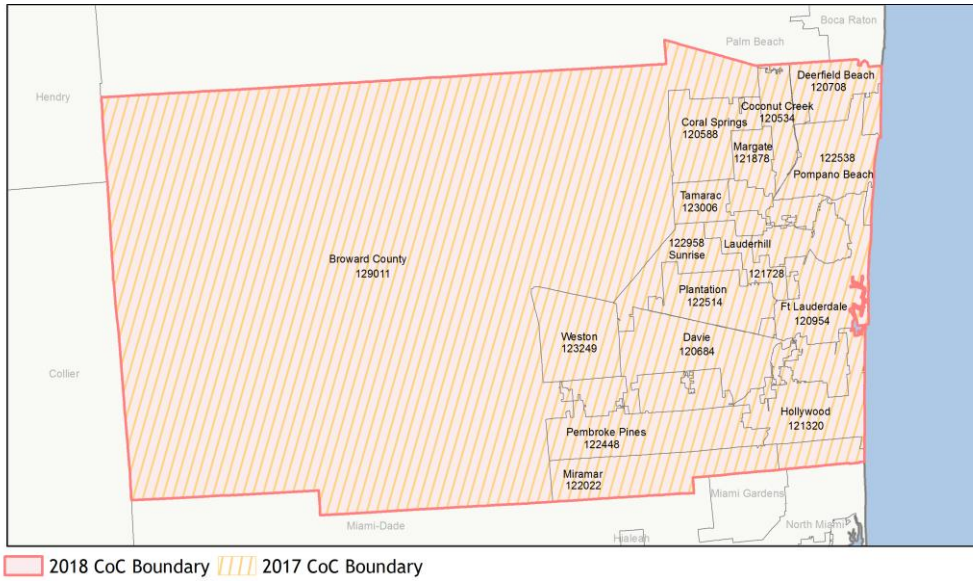
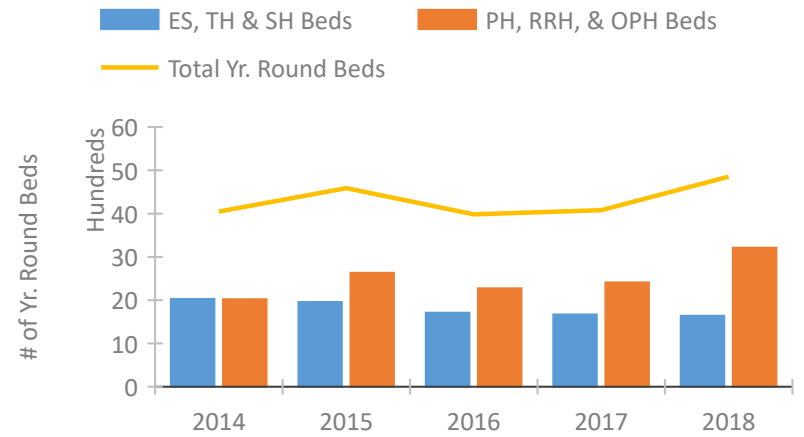


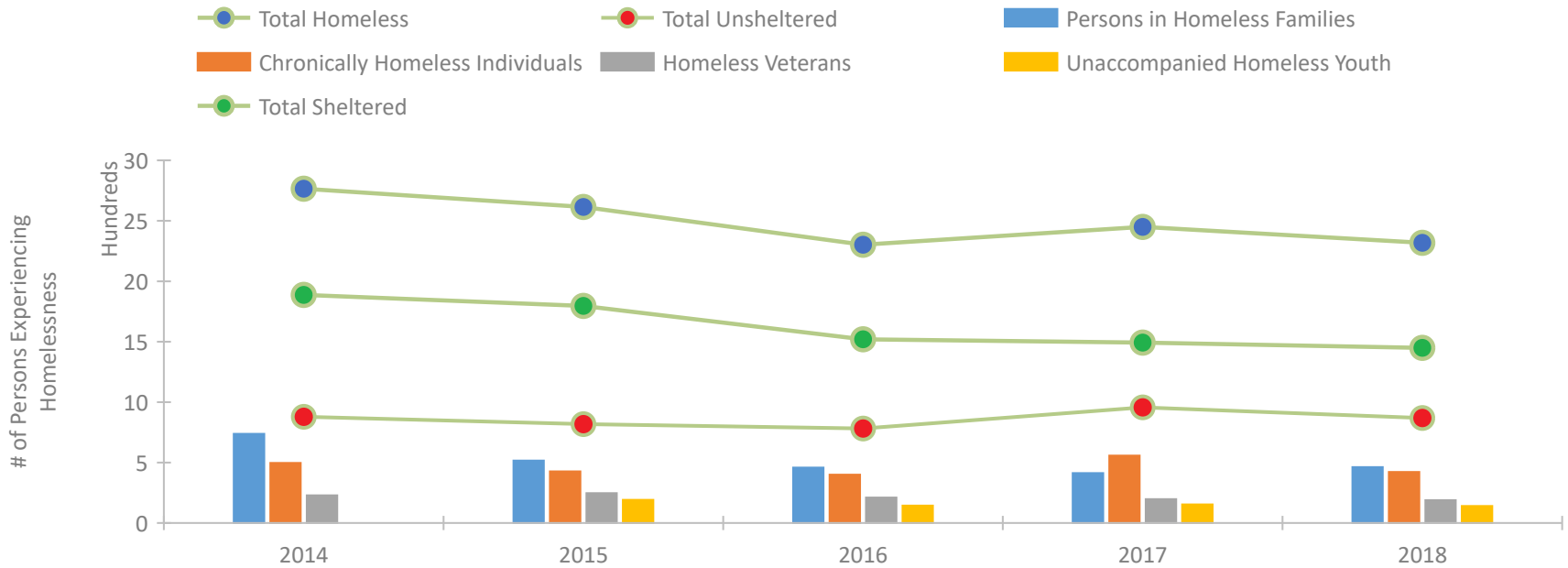
CoC Performance Profile FL-601 Ft Lauderdale/Broward County CoC



Housing Inventory Count by Program Type

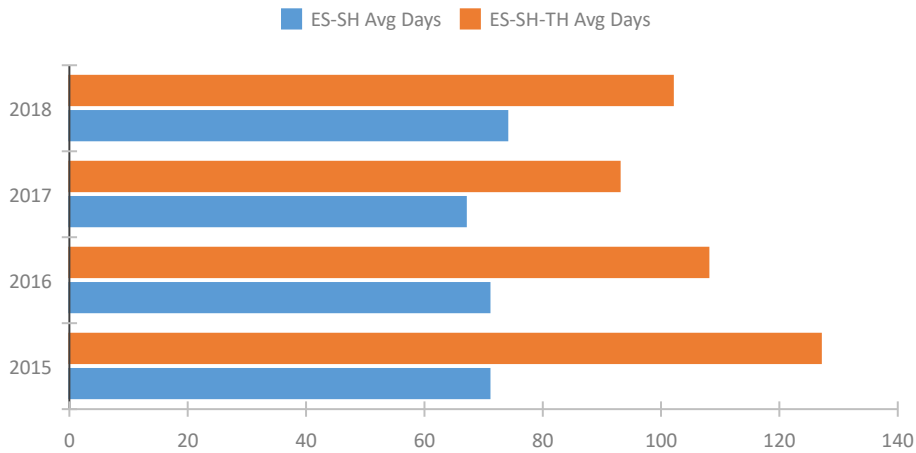


Homeless Population – Point-in-Time (PIT) Count

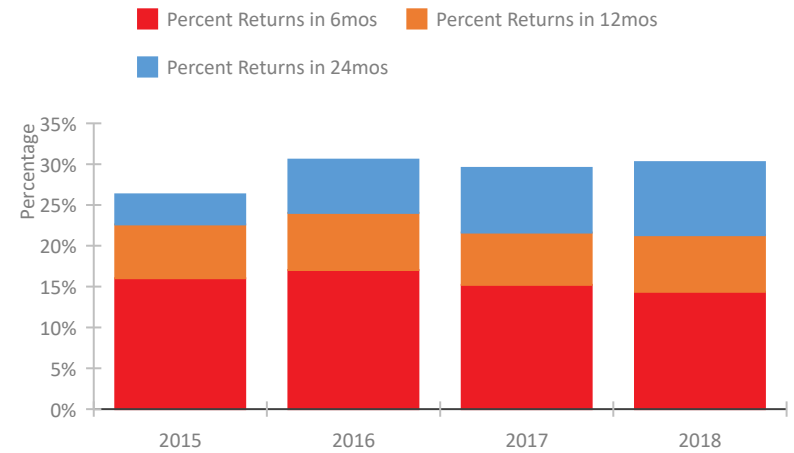


CoC Performance Profile FL-601 Ft Lauderdale/Broward County CoC

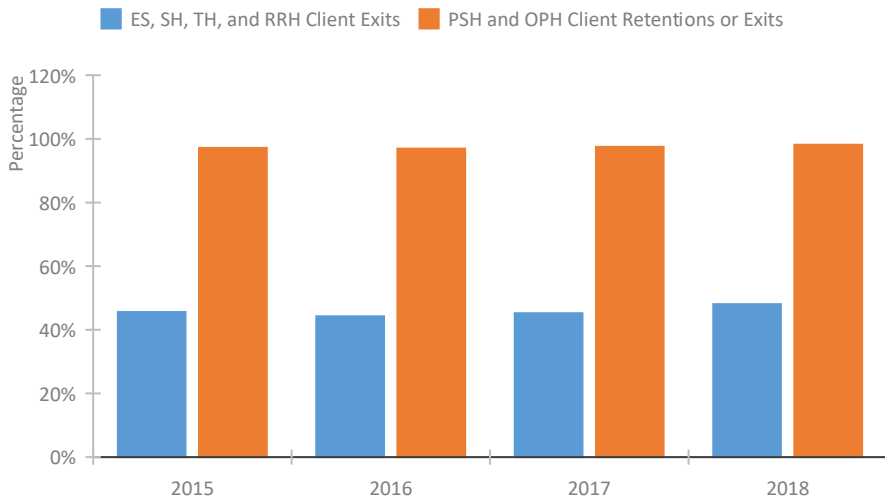
Length of Time Homeless



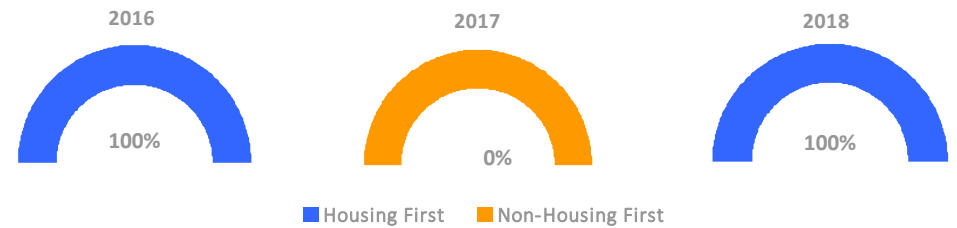
Returns to Homelessness Over Time



Exits to Permanent Housing by Program Type



Proportion of Housing First Projects by Year



Number of Projects by Year

	2016	2017	2018
Housing First Projects	22	0	20
Non-Housing First Projects	0	21	0

Data Summary: FL-601 Ft Lauderdale/Broward County CoC

Point-In-Time Count Summary

	2014	2015	2016	2017	2018	2017-18 Change	% Change
Number of Sheltered Persons in Families	684	492	435	386	436	50	13%
Number of Unsheltered Persons in Families	54	24	23	27	26	-1	-4%
Number of Sheltered Individuals	1,203	1,304	1,085	1,107	1,013	-94	-8%
Number of Unsheltered Individuals	825	795	759	930	843	-87	-9%
Total Homeless Persons	2,766	2,615	2,302	2,450	2,318	-132	-5%
Number of Sheltered Families	211	151	139	130	123	-7	-5%
Number of Unsheltered Families	14	9	9	7	8	1	14%
Number of Total Families	225	160	148	137	131	-6	-4%
Sheltered Chronically Homeless Individuals	151	135	139	155	190	35	23%
Unsheltered Chronically Homeless Individuals	346	292	261	403	232	-171	-42%
Total Chronically Homeless Individuals	497	427	400	558	422	-136	-24%
Sheltered Veterans	143	137	129	92	116	24	26%
Unsheltered Veterans	86	110	81	105	73	-32	-30%
Total Veterans	229	247	210	197	189	-8	-4%
Sheltered Unaccompanied Youth (up to 24)	--	156	107	127	101	-26	-20%
Unsheltered Unaccompanied Youth (up to 24)	--	35	37	27	40	13	48%
Total Unaccompanied Youth (up to 24)	--	191	144	154	141	-13	-8%

System Performance Measures Summary

	2014	2015	2016	2017	2018	2017-18 Change	% Change
Average Length of Time Homeless (days)	N/A	127	108	93	102	9	9.7%
Rate People Return to Homelessness in 6 Months	N/A	16.0%	17.0%	15.2%	14.4%	-0.8%	N/A
Number of People who are Homeless for the First Time	N/A	3171	3368	3949	3613	-336	-8.5%
Rate People Exit from ES, SH, TH, and RRH to PH	N/A	45.6%	44.3%	45.2%	48.1%	2.8%	N/A
Rate People in PSH and OPH Retain or Exit to PH	N/A	97.1%	96.9%	97.5%	98.1%	0.7%	N/A

Housing Inventory Count Summary

	2014	2015	2016	2017	2018	2017-18 Change	% Change
Emergency Shelter (ES)	775	820	806	848	875	27	3%
Safe Haven (SH)	35	35	35	35	35	0	0%
Transitional Housing (TH)	1,216	1,101	868	786	729	-57	-7%
Permanent Supportive Housing (PSH)	1,861	1,749	1,790	1,766	2,207	441	25%
Rapid Re-Housing (RRH)	161	432	458	580	899	319	55%
Other Permanent Housing (OPH)	--	451	25	64	107	43	67%

Award Summary

	2014	2015	2016	2017	2018	2017-18 Change	% Change
Continuum of Care (CoC)	\$10,256,442	\$10,376,919	\$10,375,134	\$10,809,436	\$10,201,816	(\$607,620)	-6%
Emergency Solutions Grants (ESG)	\$195,794	\$206,641	\$207,584	\$209,052	\$217,454	\$8,402	4%