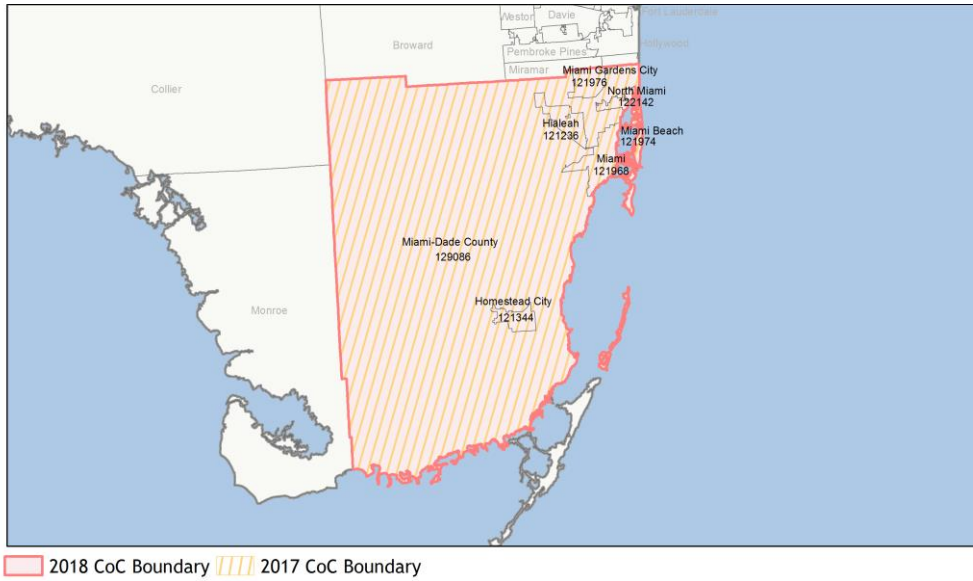
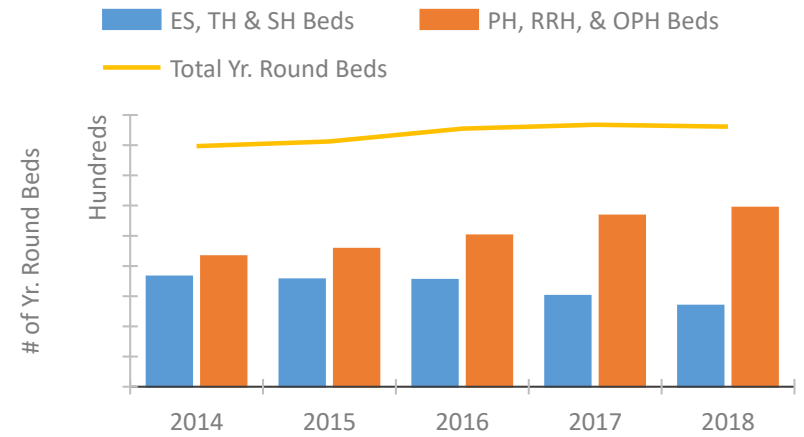


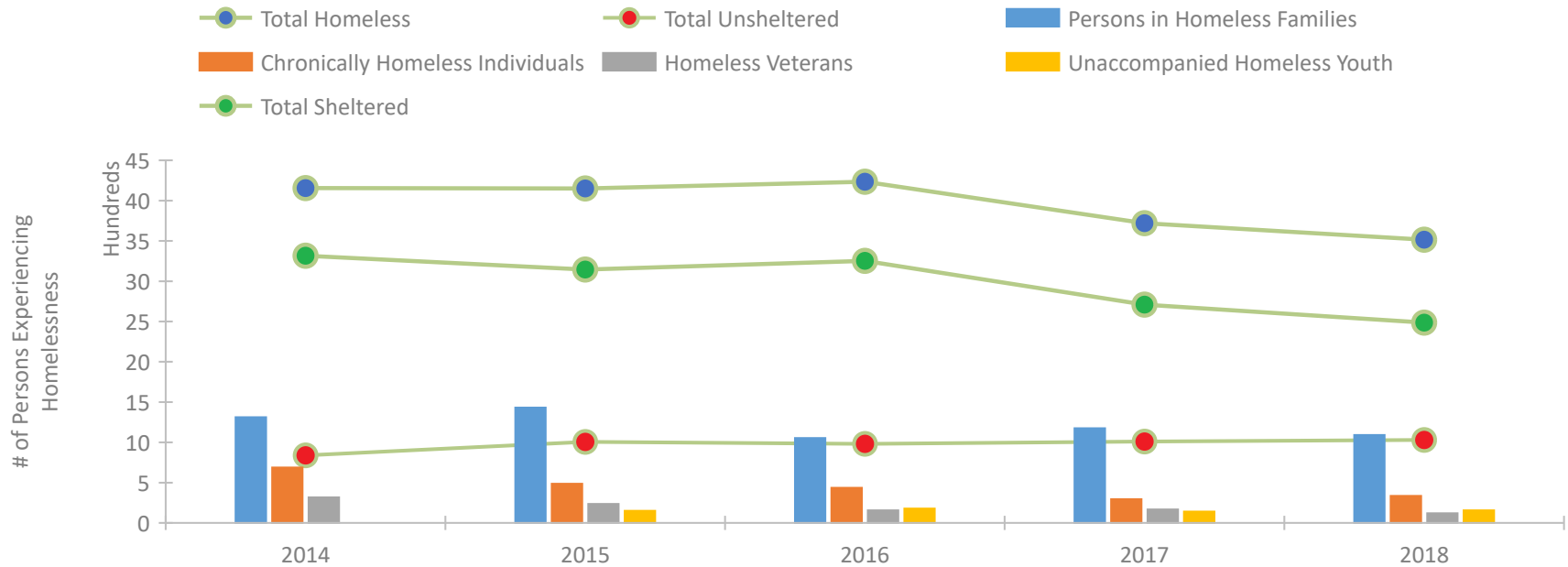
## CoC Performance Profile FL-600 Miami-Dade County CoC



### Housing Inventory Count by Program Type

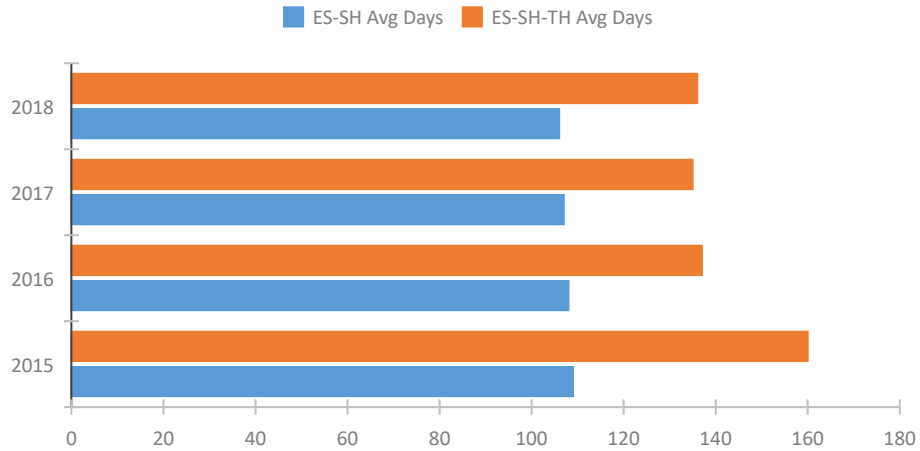


### Homeless Population – Point-in-Time (PIT) Count

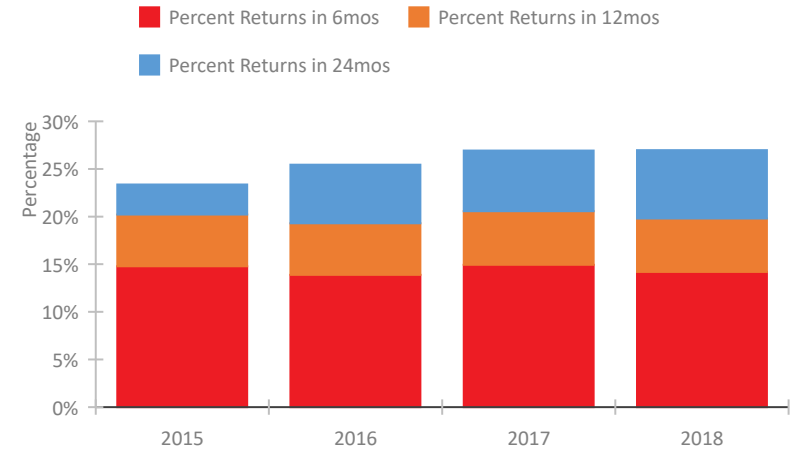


## CoC Performance Profile FL-600 Miami-Dade County CoC

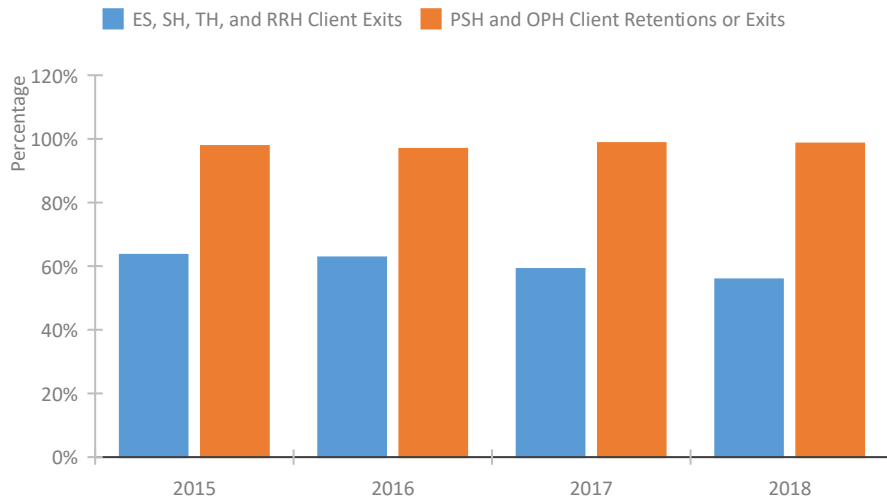
### Length of Time Homeless



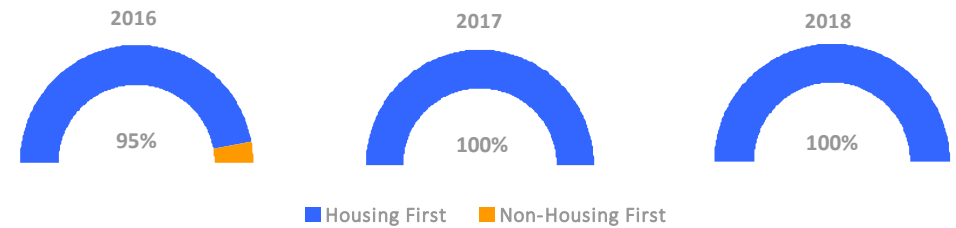
### Returns to Homelessness Over Time



### Exits to Permanent Housing by Program Type



### Proportion of Housing First Projects by Year



### Number of Projects by Year

	2016	2017	2018
Housing First Projects	69	78	76
Non-Housing First Projects	4	0	0

## Data Summary: FL-600 Miami-Dade County CoC

### Point-In-Time Count Summary

	2014	2015	2016	2017	2018	2017-18 Change	% Change
Number of Sheltered Persons in Families	1,311	1,432	1,051	1,175	1,091	-84	-7%
Number of Unsheltered Persons in Families	0	0	2	0	0	0	--
Number of Sheltered Individuals	2,005	1,713	2,202	1,535	1,395	-140	-9%
Number of Unsheltered Individuals	840	1,007	980	1,011	1,030	19	2%
<b>Total Homeless Persons</b>	<b>4,156</b>	<b>4,152</b>	<b>4,235</b>	<b>3,721</b>	<b>3,516</b>	<b>-205</b>	<b>-6%</b>
Number of Sheltered Families	385	410	315	341	312	-29	-9%
Number of Unsheltered Families	0	0	1	0	0	0	--
<b>Number of Total Families</b>	<b>385</b>	<b>410</b>	<b>316</b>	<b>341</b>	<b>312</b>	<b>-29</b>	<b>-9%</b>
Sheltered Chronically Homeless Individuals	243	134	98	159	188	29	18%
Unsheltered Chronically Homeless Individuals	445	352	337	135	148	13	10%
<b>Total Chronically Homeless Individuals</b>	<b>688</b>	<b>486</b>	<b>435</b>	<b>294</b>	<b>336</b>	<b>42</b>	<b>14%</b>
Sheltered Veterans	175	213	126	158	111	-47	-30%
Unsheltered Veterans	142	23	31	9	9	0	0%
<b>Total Veterans</b>	<b>317</b>	<b>236</b>	<b>157</b>	<b>167</b>	<b>120</b>	<b>-47</b>	<b>-28%</b>
Sheltered Unaccompanied Youth (up to 24)	--	139	165	101	130	29	29%
Unsheltered Unaccompanied Youth (up to 24)	--	11	12	40	26	-14	-35%
<b>Total Unaccompanied Youth (up to 24)</b>	<b>--</b>	<b>150</b>	<b>177</b>	<b>141</b>	<b>156</b>	<b>15</b>	<b>11%</b>

### System Performance Measures Summary

	2014	2015	2016	2017	2018	2017-18 Change	% Change
Average Length of Time Homeless (days)	N/A	160	137	135	136	1	0.7%
Rate People Return to Homelessness in 6 Months	N/A	14.8%	13.9%	14.9%	14.2%	-0.7%	N/A
Number of People who are Homeless for the First Time	N/A	5042	6213	5448	4900	-548	-10.1%
Rate People Exit from ES, SH, TH, and RRH to PH	N/A	63.5%	62.7%	59.1%	55.8%	-3.3%	N/A
Rate People in PSH and OPH Retain or Exit to PH	N/A	97.7%	96.9%	98.6%	98.5%	-0.1%	N/A

### Housing Inventory Count Summary

	2014	2015	2016	2017	2018	2017-18 Change	% Change
Emergency Shelter (ES)	2,026	1,738	1,999	1,969	1,903	-66	-3%
Safe Haven (SH)	28	28	28	28	56	28	100%
Transitional Housing (TH)	1,595	1,788	1,510	1,012	724	-288	-28%
Permanent Supportive Housing (PSH)	3,939	4,188	4,337	4,620	4,625	5	0%
Rapid Re-Housing (RRH)	381	381	565	903	1,161	258	29%
Other Permanent Housing (OPH)	--	--	109	146	146	0	0%

### Award Summary

	2014	2015	2016	2017	2018	2017-18 Change	% Change
<b>Continuum of Care (CoC)</b>	\$32,258,225	\$29,730,926	\$29,898,527	\$30,682,032	\$31,480,996	\$798,964	3%
<b>Emergency Solutions Grants (ESG)</b>	\$1,465,275	\$1,572,960	\$1,605,741	\$5,721,409	\$1,674,960	(\$4,046,449)	-71%