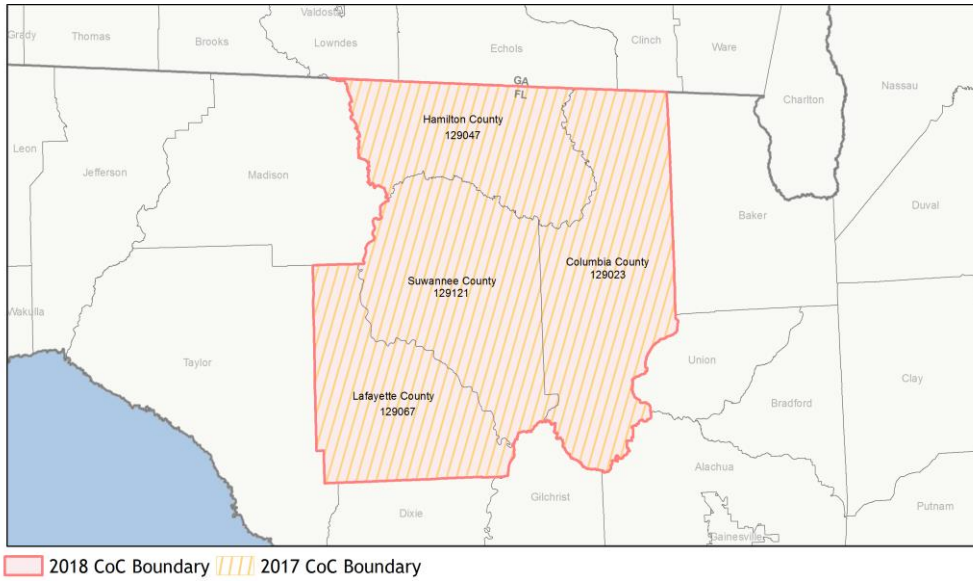
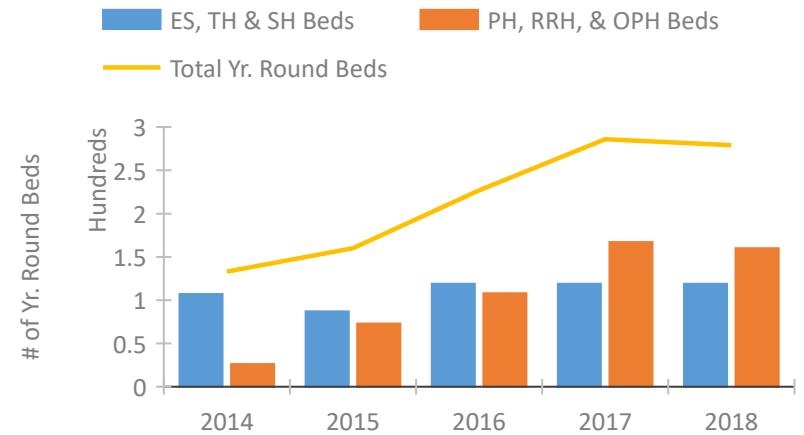


# CoC Performance Profile FL-518

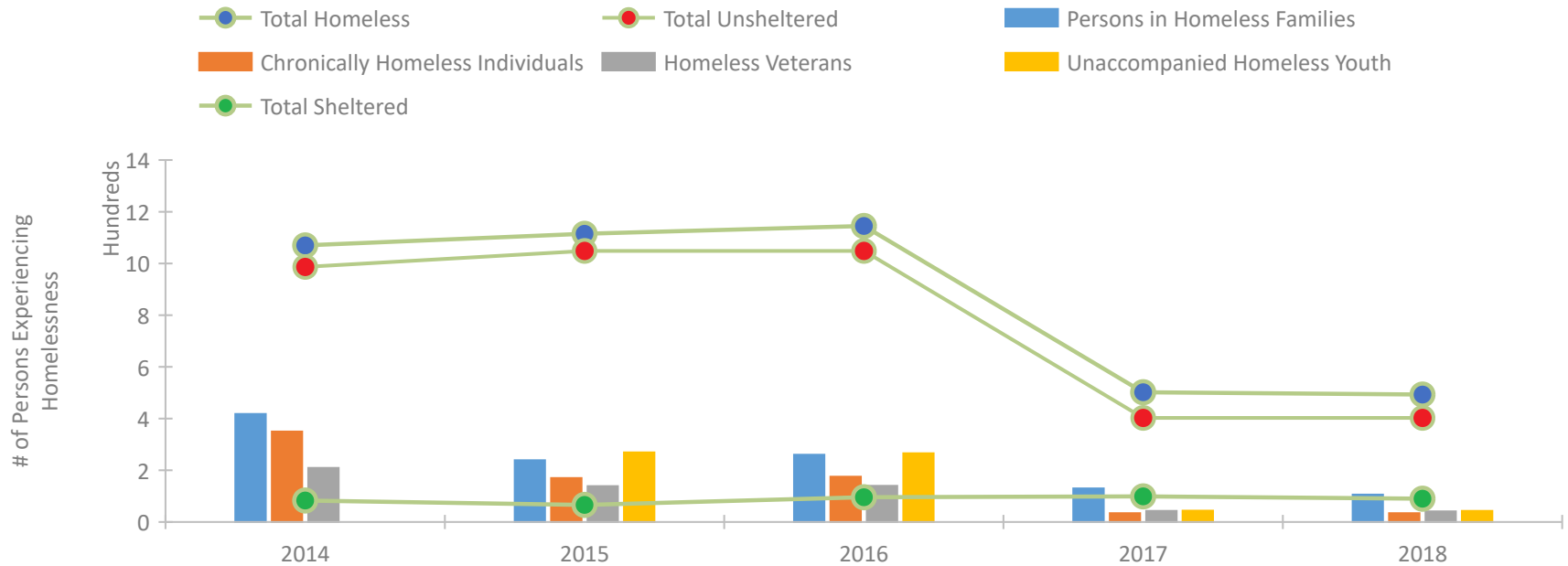
## Columbia, Hamilton, Lafayette, Suwannee Counties CoC



### Housing Inventory Count by Program Type



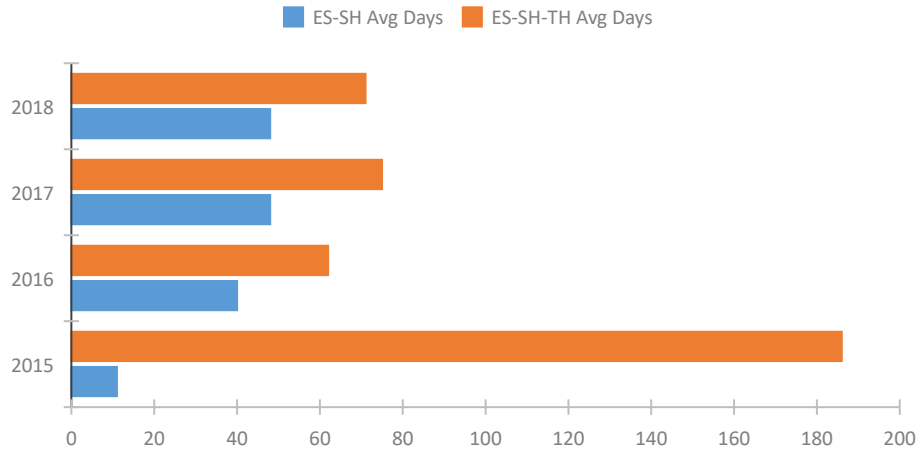
### Homeless Population – Point-in-Time (PIT) Count



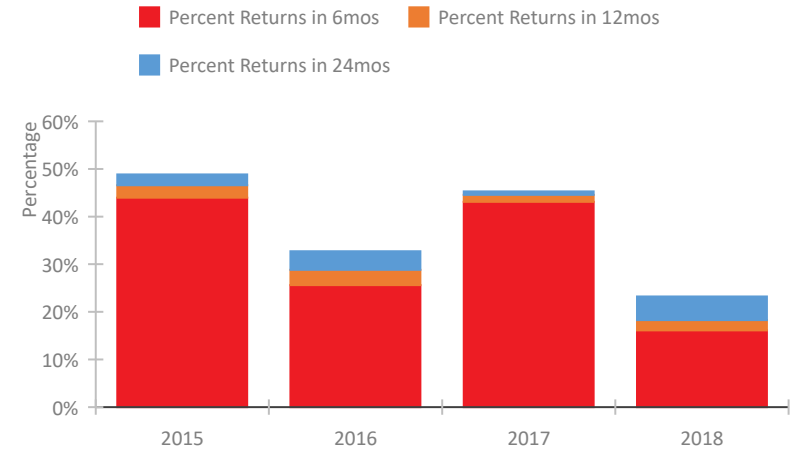
## CoC Performance Profile FL-518

### Columbia, Hamilton, Lafayette, Suwannee Counties CoC

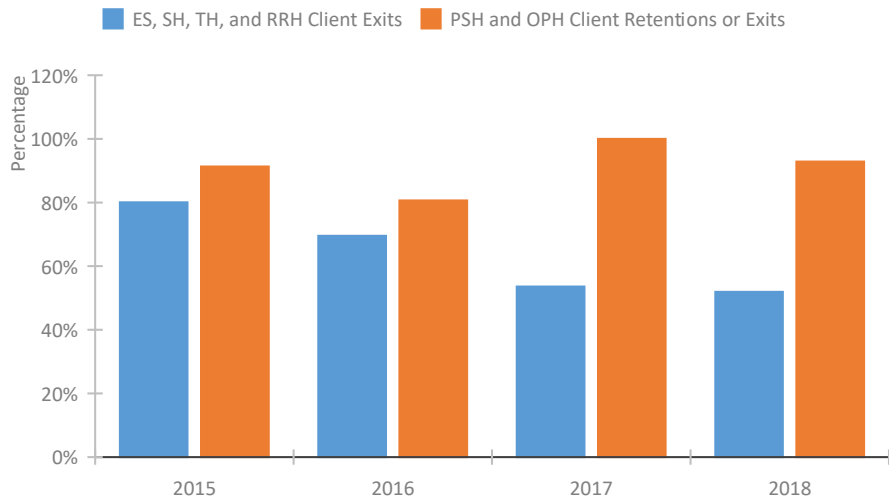
Length of Time Homeless



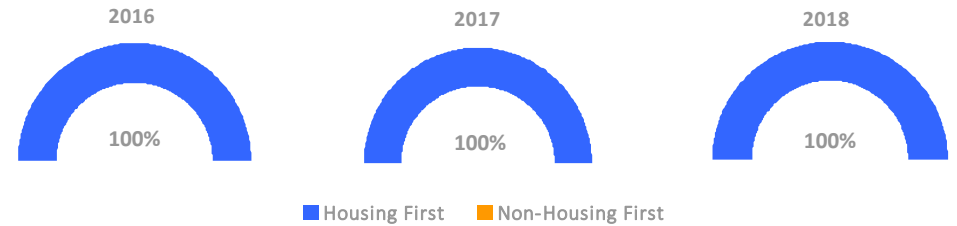
Returns to Homelessness Over Time



Exits to Permanent Housing by Program Type



Proportion of Housing First Projects by Year



Number of Projects by Year

	2016	2017	2018
Housing First Projects	3	3	5
Non-Housing First Projects	0	0	0

## Data Summary: FL-518 Columbia, Hamilton, Lafayette, Suwannee Counties CoC

### Point-In-Time Count Summary

	2014	2015	2016	2017	2018	2017-18 Change	% Change
Number of Sheltered Persons in Families	42	21	42	53	29	-24	-45%
Number of Unsheltered Persons in Families	376	218	218	77	77	0	0%
Number of Sheltered Individuals	41	45	54	46	61	15	33%
Number of Unsheltered Individuals	611	831	831	326	326	0	0%
<b>Total Homeless Persons</b>	<b>1,070</b>	<b>1,115</b>	<b>1,145</b>	<b>502</b>	<b>493</b>	<b>-9</b>	<b>-2%</b>
Number of Sheltered Families	18	7	14	16	9	-7	-44%
Number of Unsheltered Families	184	63	63	28	28	0	0%
<b>Number of Total Families</b>	<b>202</b>	<b>70</b>	<b>77</b>	<b>44</b>	<b>37</b>	<b>-7</b>	<b>-16%</b>
Sheltered Chronically Homeless Individuals	0	0	5	0	0	0	--
Unsheltered Chronically Homeless Individuals	350	170	170	34	34	0	0%
<b>Total Chronically Homeless Individuals</b>	<b>350</b>	<b>170</b>	<b>175</b>	<b>34</b>	<b>34</b>	<b>0</b>	<b>0%</b>
Sheltered Veterans	25	27	28	26	24	-2	-8%
Unsheltered Veterans	184	112	112	17	17	0	0%
<b>Total Veterans</b>	<b>209</b>	<b>139</b>	<b>140</b>	<b>43</b>	<b>41</b>	<b>-2</b>	<b>-5%</b>
Sheltered Unaccompanied Youth (up to 24)	--	16	13	11	10	-1	-9%
Unsheltered Unaccompanied Youth (up to 24)	--	253	253	33	33	0	0%
<b>Total Unaccompanied Youth (up to 24)</b>	<b>--</b>	<b>269</b>	<b>266</b>	<b>44</b>	<b>43</b>	<b>-1</b>	<b>-2%</b>

### System Performance Measures Summary

	2014	2015	2016	2017	2018	2017-18 Change	% Change
Average Length of Time Homeless (days)	N/A	186	62	75	71	-4	-5.3%
Rate People Return to Homelessness in 6 Months	N/A	44.0%	25.6%	43.1%	16.1%	-27%	N/A
Number of People who are Homeless for the First Time	N/A	498	780	671	523	-148	-22.1%
Rate People Exit from ES, SH, TH, and RRH to PH	N/A	80.1%	69.5%	53.6%	51.9%	-1.7%	N/A
Rate People in PSH and OPH Retain or Exit to PH	N/A	91.3%	80.6%	100.0%	92.9%	-7.1%	N/A

### Housing Inventory Count Summary

	2014	2015	2016	2017	2018	2017-18 Change	% Change
Emergency Shelter (ES)	56	42	74	82	82	0	0%
Transitional Housing (TH)	51	45	45	37	37	0	0%
Permanent Supportive Housing (PSH)	26	67	86	95	92	-3	-3%
Rapid Re-Housing (RRH)	--	6	22	72	68	-4	-6%

### Award Summary

	2014	2015	2016	2017	2018	2017-18 Change	% Change
<b>Continuum of Care (CoC)</b>	\$279,172	\$357,005	\$357,356	\$350,172	\$360,919	\$10,747	3%
<b>ESG (FL state recipient - no direct funding)</b>	\$4,605,599	\$5,019,268	\$5,098,790	\$5,183,540	\$5,380,797	\$197,257	4%