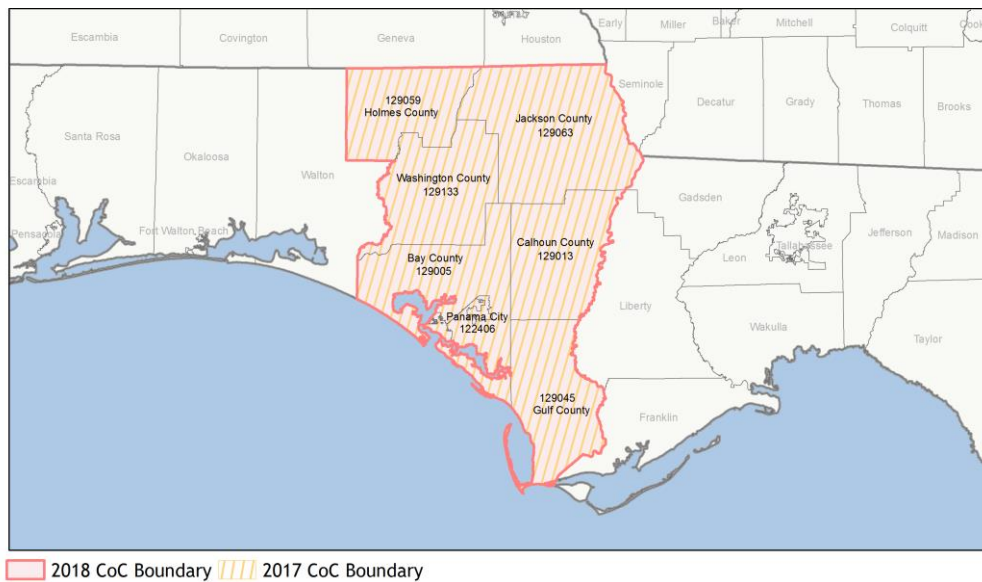
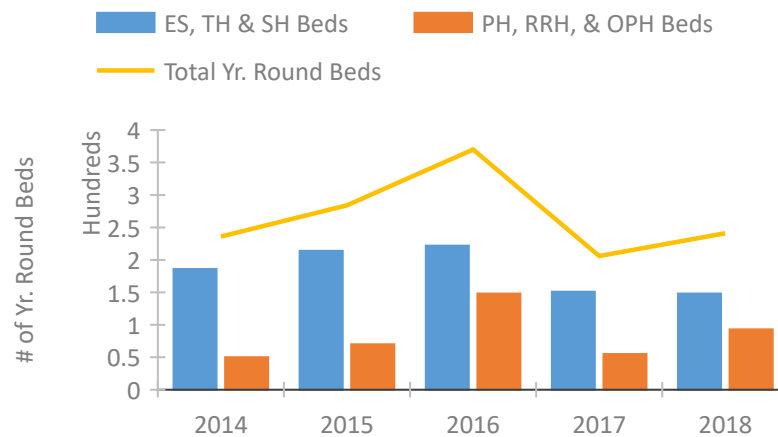


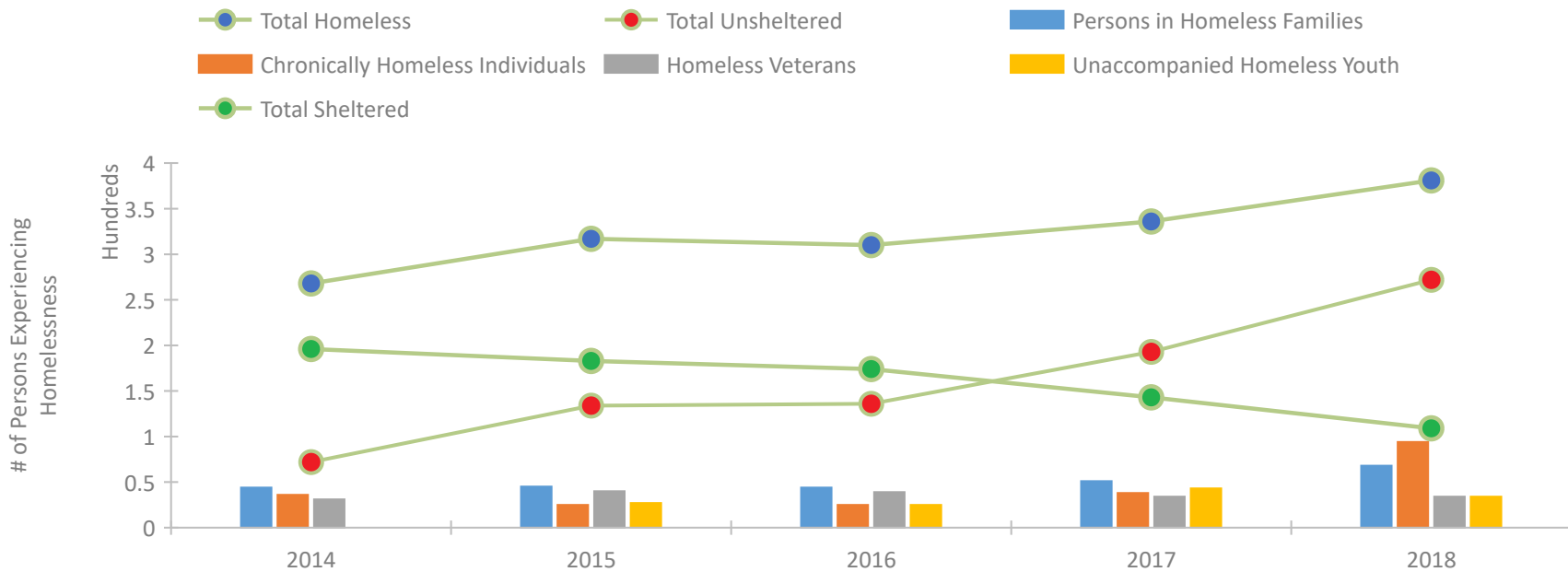
CoC Performance Profile FL-515
Panama City/Bay, Jackson Counties CoC



Housing Inventory Count by Program Type



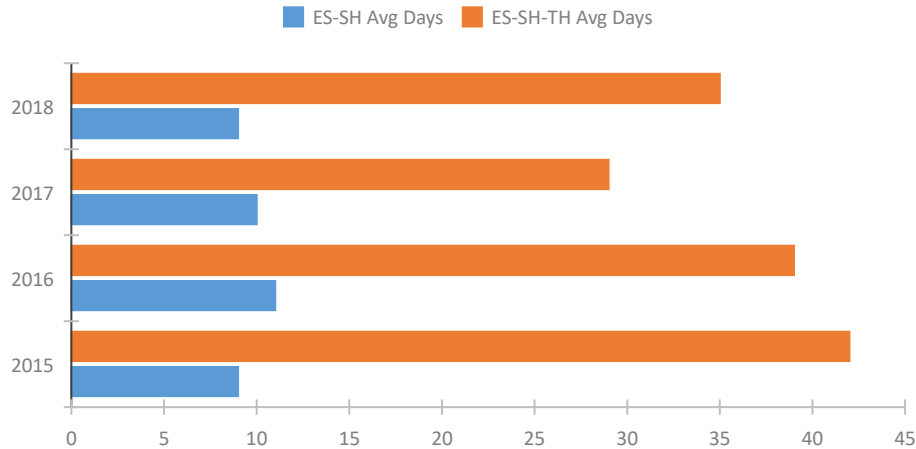
Homeless Population – Point-in-Time (PIT) Count



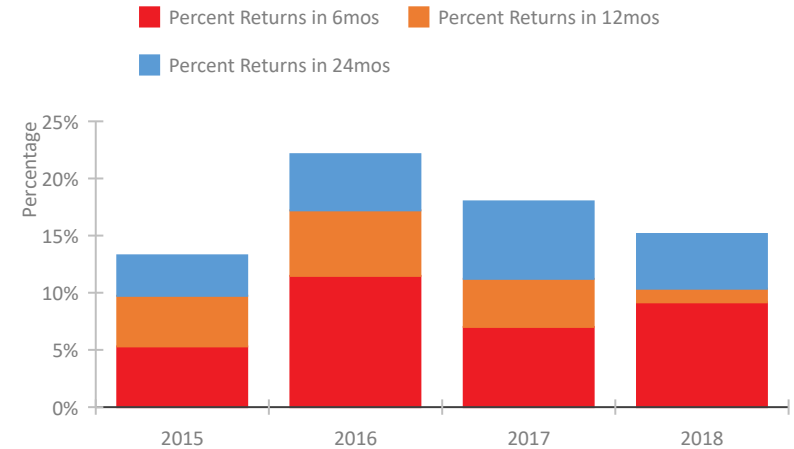
CoC Performance Profile FL-515

Panama City/Bay, Jackson Counties CoC

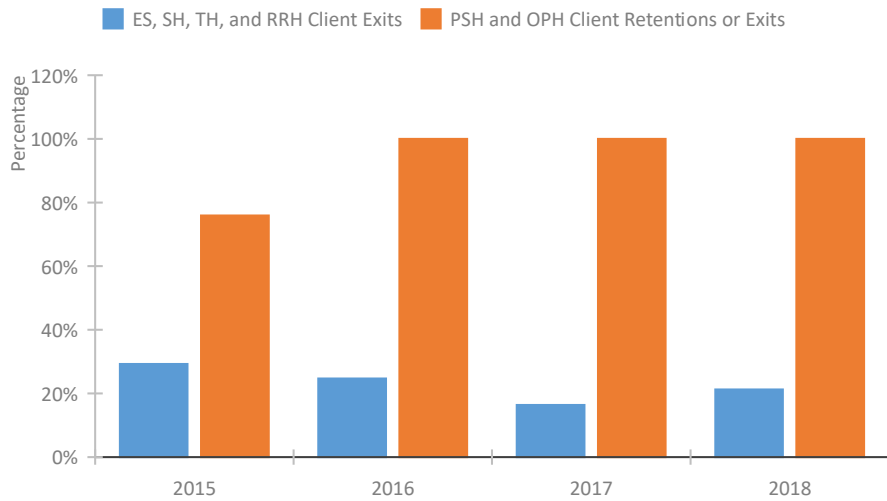
Length of Time Homeless



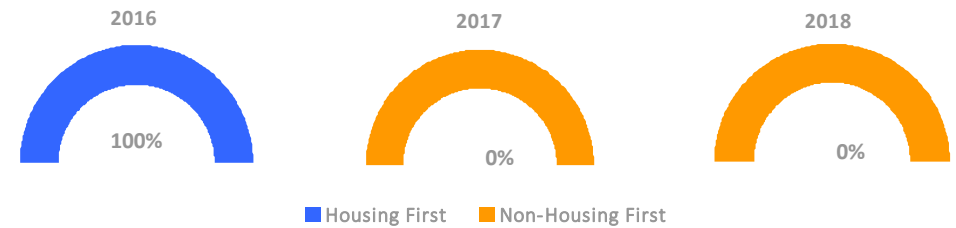
Returns to Homelessness Over Time



Exits to Permanent Housing by Program Type



Proportion of Housing First Projects by Year



Number of Projects by Year

	2016	2017	2018
Housing First Projects	1	0	0
Non-Housing First Projects	0	0	0

Data Summary: FL-515 Panama City/Bay, Jackson Counties CoC

Point-In-Time Count Summary

	2014	2015	2016	2017	2018	2017-18 Change	% Change
Number of Sheltered Persons in Families	18	34	35	14	34	20	143%
Number of Unsheltered Persons in Families	26	11	9	37	34	-3	-8%
Number of Sheltered Individuals	178	149	139	129	75	-54	-42%
Number of Unsheltered Individuals	46	123	127	156	238	82	53%
Total Homeless Persons	268	317	310	336	381	45	13%
Number of Sheltered Families	7	13	14	5	9	4	80%
Number of Unsheltered Families	8	3	3	9	12	3	33%
Number of Total Families	15	16	17	14	21	7	50%
Sheltered Chronically Homeless Individuals	6	2	5	0	0	0	--
Unsheltered Chronically Homeless Individuals	30	23	20	38	94	56	147%
Total Chronically Homeless Individuals	36	25	25	38	94	56	147%
Sheltered Veterans	18	12	10	15	9	-6	-40%
Unsheltered Veterans	13	28	29	19	25	6	32%
Total Veterans	31	40	39	34	34	0	0%
Sheltered Unaccompanied Youth (up to 24)	--	23	20	43	17	-26	-60%
Unsheltered Unaccompanied Youth (up to 24)	--	4	5	0	17	17	100%
Total Unaccompanied Youth (up to 24)	--	27	25	43	34	-9	-21%

System Performance Measures Summary

	2014	2015	2016	2017	2018	2017-18 Change	% Change
Average Length of Time Homeless (days)	N/A	42	39	29	35	6	20.7%
Rate People Return to Homelessness in 6 Months	N/A	5.3%	11.5%	7.0%	9.2%	2.2%	N/A
Number of People who are Homeless for the First Time	N/A	1354	1332	1413	1108	-305	-21.6%
Rate People Exit from ES, SH, TH, and RRH to PH	N/A	29.3%	24.7%	16.4%	21.2%	4.9%	N/A
Rate People in PSH and OPH Retain or Exit to PH	N/A	75.9%	100.0%	100.0%	100.0%	0%	N/A

Housing Inventory Count Summary

	2014	2015	2016	2017	2018	2017-18 Change	% Change
Emergency Shelter (ES)	24	58	58	72	64	-8	-11%
Transitional Housing (TH)	162	156	164	79	84	5	6%
Permanent Supportive Housing (PSH)	50	50	50	50	60	10	20%
Rapid Re-Housing (RRH)	--	20	98	5	33	28	560%

Award Summary

	2014	2015	2016	2017	2018	2017-18 Change	% Change
Continuum of Care (CoC)	\$49,162	\$42,952	\$52,529	\$52,548	\$53,680	\$1,132	2%
ESG (FL state recipient - no direct funding)	\$4,605,599	\$5,019,268	\$5,098,790	\$5,183,540	\$5,380,797	\$197,257	4%