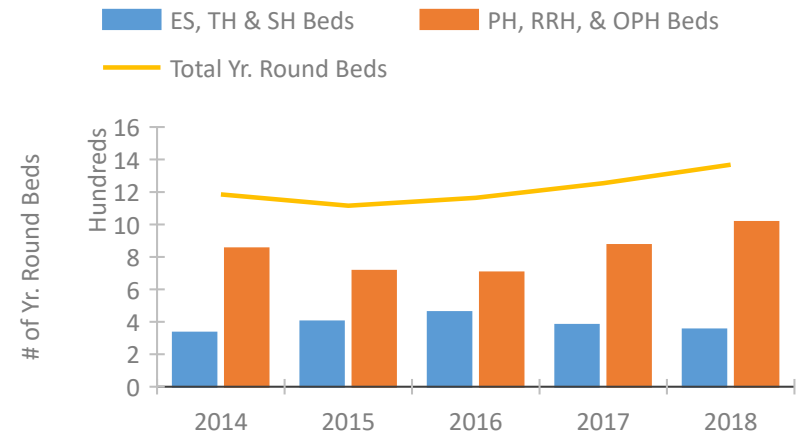


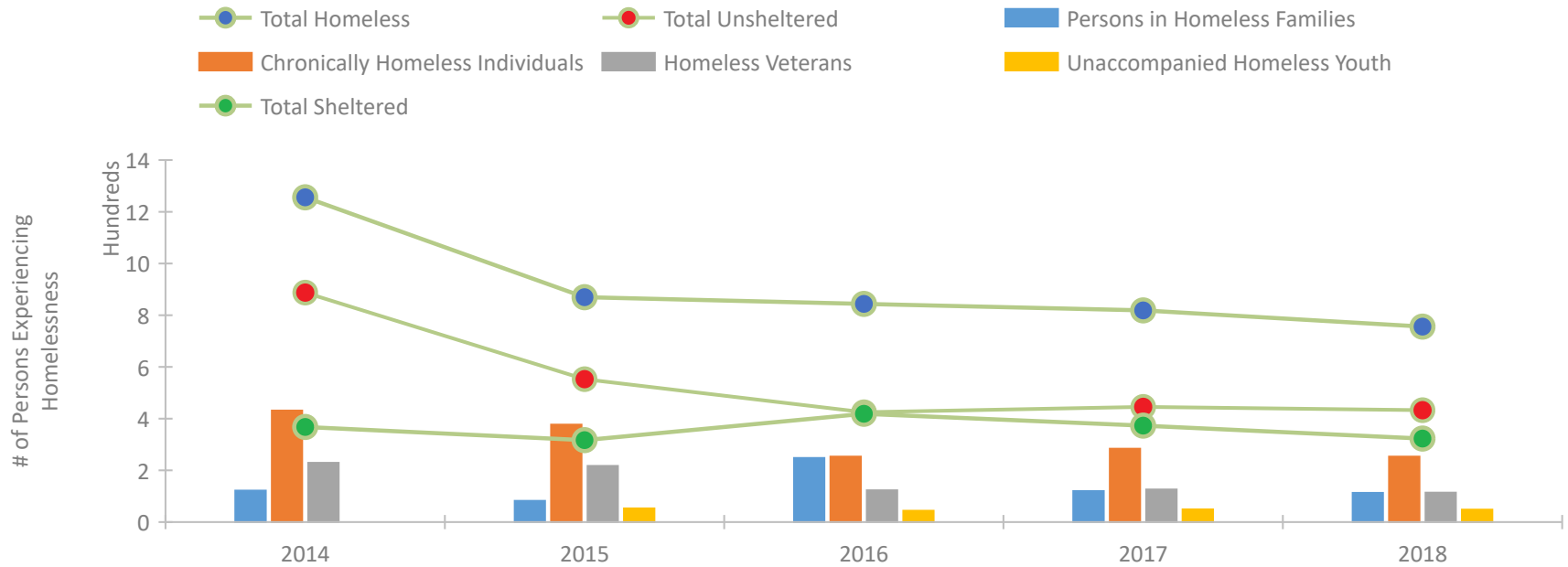
CoC Performance Profile FL-508 Gainesville/Alachua, Putnam Counties CoC



Housing Inventory Count by Program Type

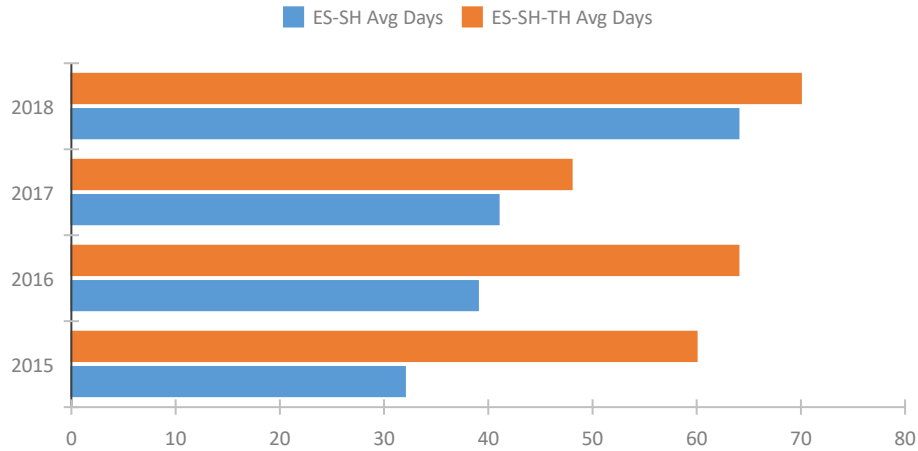


Homeless Population – Point-in-Time (PIT) Count

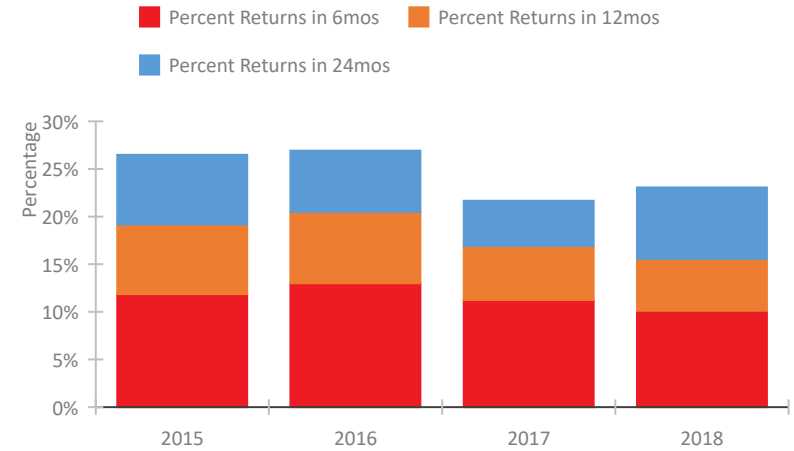


CoC Performance Profile FL-508 Gainesville/Alachua, Putnam Counties CoC

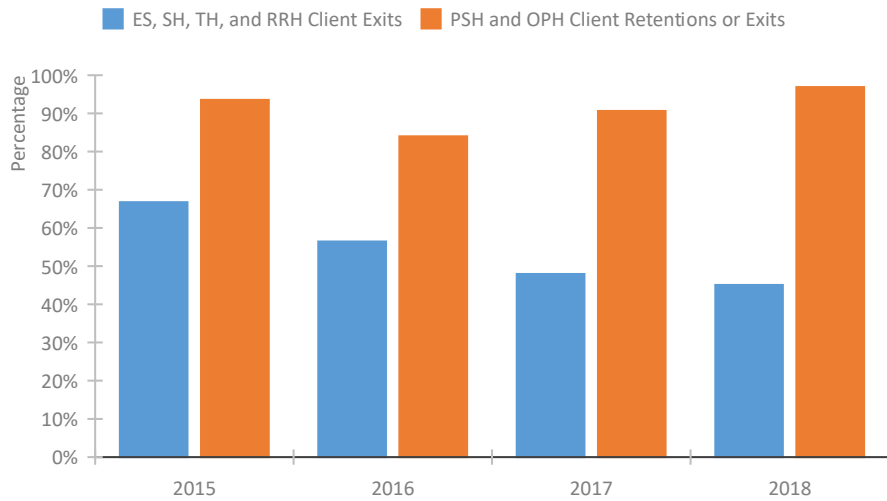
Length of Time Homeless



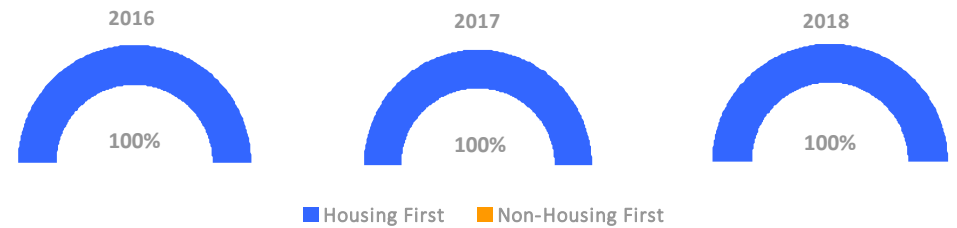
Returns to Homelessness Over Time



Exits to Permanent Housing by Program Type



Proportion of Housing First Projects by Year



Number of Projects by Year

	2016	2017	2018
Housing First Projects	6	8	7
Non-Housing First Projects	0	0	0

Data Summary: FL-508 Gainesville/Alachua, Putnam Counties CoC

Point-In-Time Count Summary

	2014	2015	2016	2017	2018	2017-18 Change	% Change
Number of Sheltered Persons in Families	108	74	246	115	83	-32	-28%
Number of Unsheltered Persons in Families	14	8	2	5	30	25	500%
Number of Sheltered Individuals	260	243	173	258	240	-18	-7%
Number of Unsheltered Individuals	874	545	423	441	403	-38	-9%
Total Homeless Persons	1,256	870	844	819	756	-63	-8%
Number of Sheltered Families	38	32	86	29	26	-3	-10%
Number of Unsheltered Families	5	2	1	2	9	7	350%
Number of Total Families	43	34	87	31	35	4	13%
Sheltered Chronically Homeless Individuals	38	33	33	22	29	7	32%
Unsheltered Chronically Homeless Individuals	393	344	220	262	224	-38	-15%
Total Chronically Homeless Individuals	431	377	253	284	253	-31	-11%
Sheltered Veterans	111	125	47	68	66	-2	-3%
Unsheltered Veterans	118	92	76	58	48	-10	-17%
Total Veterans	229	217	123	126	114	-12	-10%
Sheltered Unaccompanied Youth (up to 24)	--	28	34	42	41	-1	-2%
Unsheltered Unaccompanied Youth (up to 24)	--	25	10	7	7	0	0%
Total Unaccompanied Youth (up to 24)	--	53	44	49	48	-1	-2%

System Performance Measures Summary

	2014	2015	2016	2017	2018	2017-18 Change	% Change
Average Length of Time Homeless (days)	N/A	60	64	48	70	22	45.8%
Rate People Return to Homelessness in 6 Months	N/A	11.9%	13.0%	11.3%	10.1%	-1.1%	N/A
Number of People who are Homeless for the First Time	N/A	1853	1581	1726	1674	-52	-3%
Rate People Exit from ES, SH, TH, and RRH to PH	N/A	66.8%	56.4%	48.0%	45.1%	-2.9%	N/A
Rate People in PSH and OPH Retain or Exit to PH	N/A	93.6%	84.0%	90.7%	96.9%	6.2%	N/A

Housing Inventory Count Summary

	2014	2015	2016	2017	2018	2017-18 Change	% Change
Emergency Shelter (ES)	132	213	270	307	304	-3	-1%
Transitional Housing (TH)	201	189	190	74	49	-25	-34%
Permanent Supportive Housing (PSH)	852	666	651	715	811	96	13%
Rapid Re-Housing (RRH)	--	48	42	158	204	46	29%

Award Summary

	2014	2015	2016	2017	2018	2017-18 Change	% Change
Continuum of Care (CoC)	\$677,341	\$587,341	\$627,897	\$695,392	\$703,177	\$7,785	1%
ESG (FL state recipient - no direct funding)	\$4,605,599	\$5,019,268	\$5,098,790	\$5,183,540	\$5,380,797	\$197,257	4%