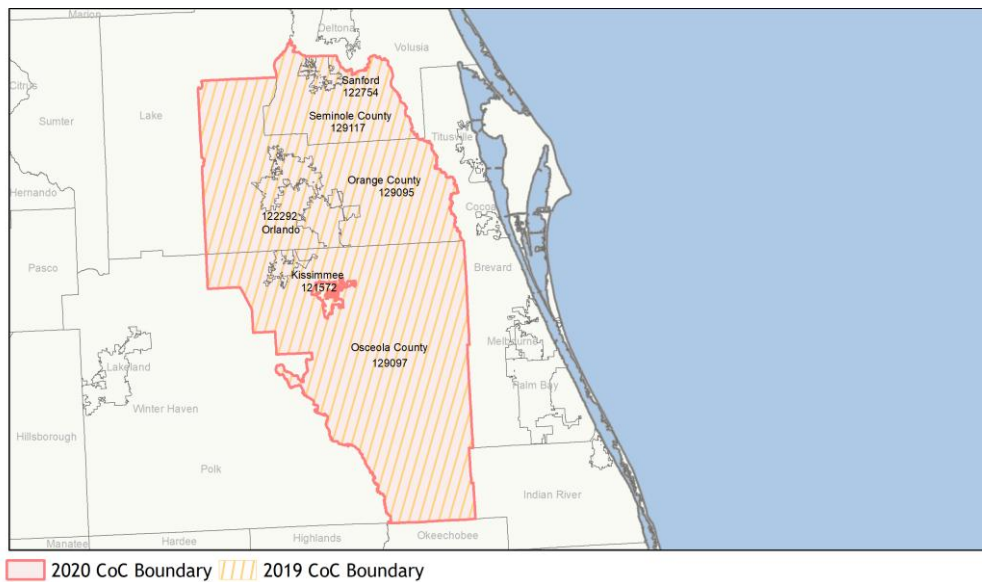
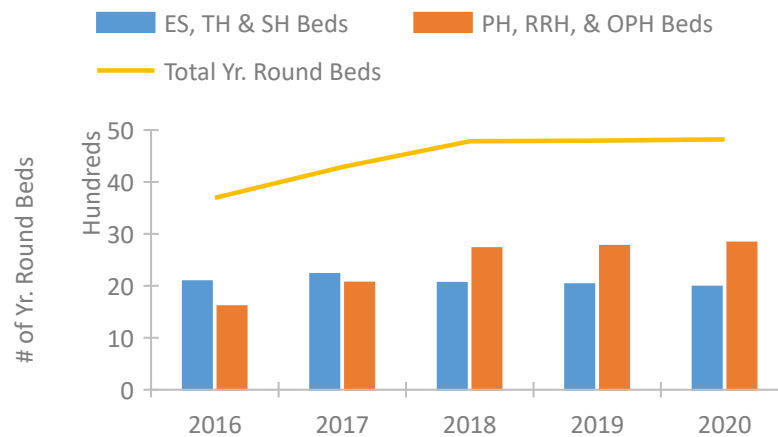


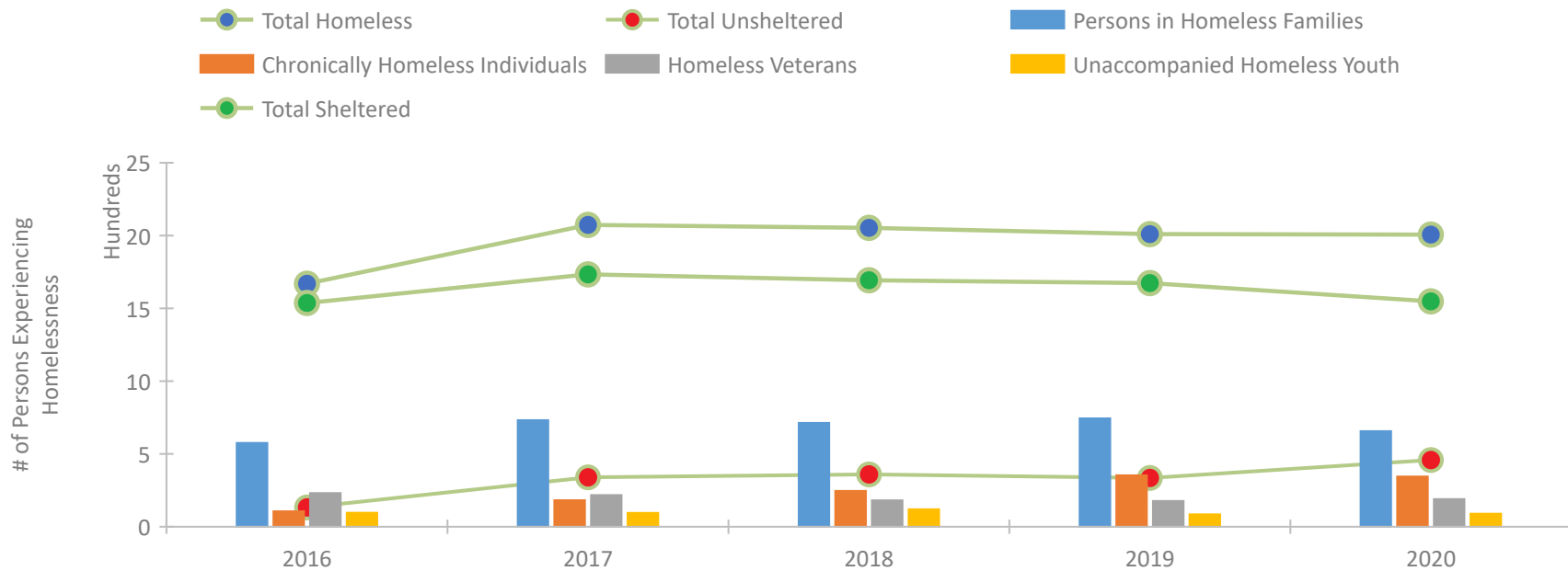
CoC Performance Profile FL-507 Orlando/Orange, Osceola, Seminole Counties CoC



Housing Inventory Count by Program Type

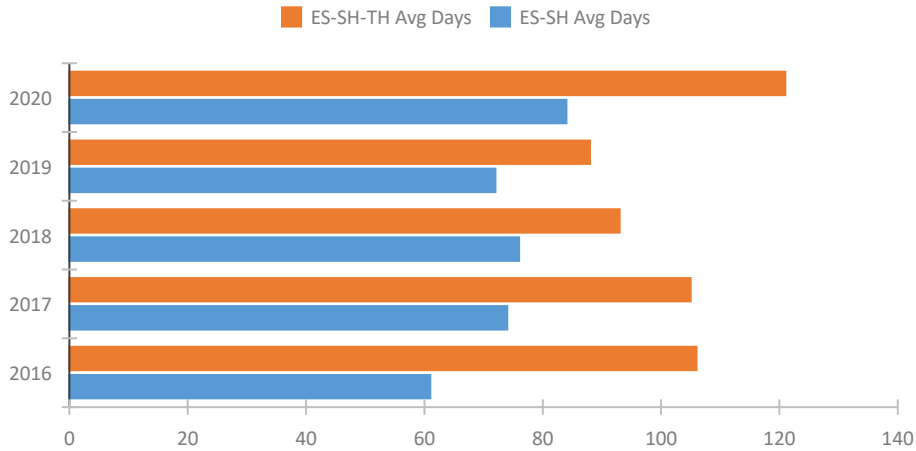


Homeless Population – Point-in-Time (PIT) Count

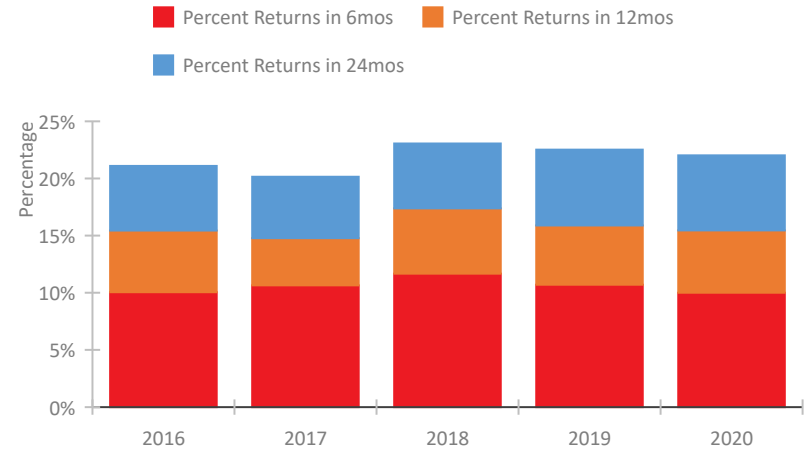


CoC Performance Profile FL-507 Orlando/Orange, Osceola, Seminole Counties CoC

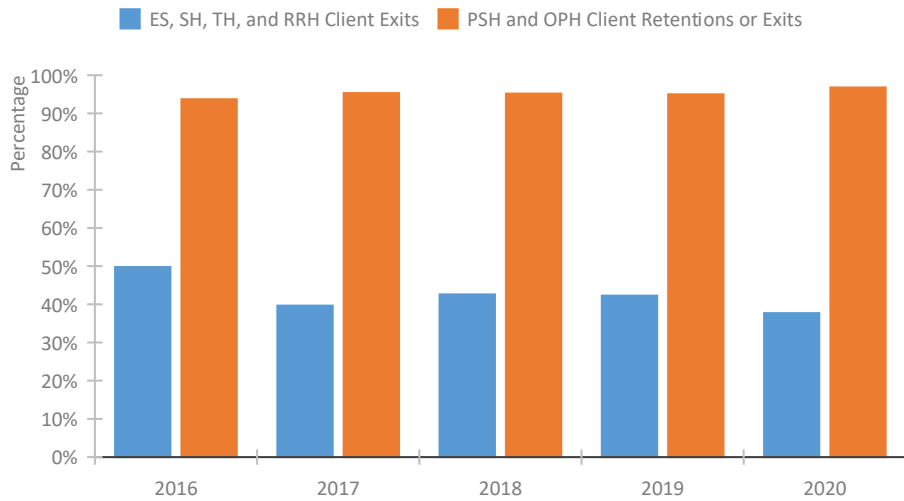
Length of Time Homeless



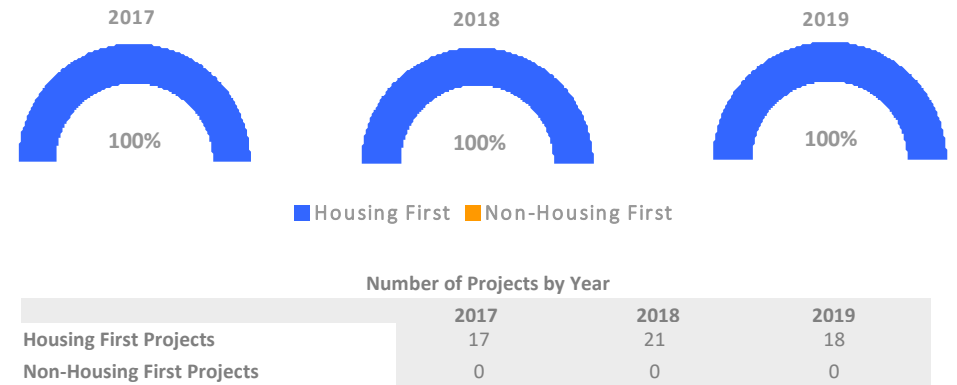
Returns to Homelessness Over Time



Exits to Permanent Housing by Program Type



Proportion of Housing First Projects by Year*



*In 2020 HUD awarded renewal projects noncompetitively, therefore no new data was collected and Housing First data remains the same from 2019 to 2020.

Data Summary: FL-507 Orlando/Orange, Osceola, Seminole Counties CoC

Point-In-Time Count Summary

	2016	2017	2018	2019	2020	2019-20 Change	% Change
Number of Sheltered Persons in Families	576	708	691	742	640	-102	-14%
Number of Unsheltered Persons in Families	0	24	22	3	17	14	467%
Number of Sheltered Individuals	961	1,026	1,002	932	908	-24	-3%
Number of Unsheltered Individuals	133	316	338	333	442	109	33%
Total Homeless Persons	1,670	2,074	2,053	2,010	2,007	-3	-0%
Number of Sheltered Families	187	234	209	238	212	-26	-11%
Number of Unsheltered Families	0	10	6	1	6	5	500%
Number of Total Families	187	244	215	239	218	-21	-9%
Sheltered Chronically Homeless Individuals	82	78	98	190	131	-59	-31%
Unsheltered Chronically Homeless Individuals	24	104	148	163	214	51	31%
Total Chronically Homeless Individuals	106	182	246	353	345	-8	-2%
Sheltered Veterans	225	207	156	140	141	1	1%
Unsheltered Veterans	6	11	25	37	49	12	32%
Total Veterans	231	218	181	177	190	13	7%
Sheltered Unaccompanied Youth (up to 24)	92	86	104	67	73	6	9%
Unsheltered Unaccompanied Youth (up to 24)	4	9	16	18	16	-2	-11%
Total Unaccompanied Youth (up to 24)	96	95	120	85	89	4	5%

System Performance Measures Summary

	2016	2017	2018	2018	2020	2019-20 Change	% Change
Average Length of Time Homeless (days)	106	105	93	88	121	33	37.5%
Rate People Return to Homelessness in 6 Months	10.0%	10.6%	11.7%	10.7%	10.0%	-0.7%	N/A
Number of People who are Homeless for the First Time	5,181	5,194	4,922	4,831	4,024	-807	-16.7%
Rate People Exit from ES, SH, TH, and RRH to PH	49.8%	39.7%	42.6%	42.3%	37.7%	-4.6%	N/A
Rate People in PSH and OPH Retain or Exit to PH	93.7%	95.3%	95.2%	95.0%	96.8%	1.8%	N/A

Housing Inventory Count Summary

	2016	2017	2018	2019	2020	2019-20 Change	% Change
Emergency Shelter (ES)	991	1,049	1,325	1,369	1,273	-96	-7%
Transitional Housing (TH)	1,097	1,180	733	662	713	51	8%
Permanent Supportive Housing (PSH)	1,379	1,325	1,464	1,530	1,599	69	5%
Rapid Re-Housing (RRH)	229	285	836	836	833	-3	-0%
Other Permanent Housing (OPH)	--	451	426	402	402	0	-0%

Award Summary

	2016	2017	2018	2019	2020	2019-20 Change	% Change
Continuum of Care (CoC)	\$7,445,861	\$7,550,681	\$8,069,046	\$8,740,225	\$9,530,007	\$789,782	9%
Emergency Solutions Grants (ESG)	\$807,790	\$813,312	\$836,699	\$1,047,258	\$953,083	(\$94,175)	-9%