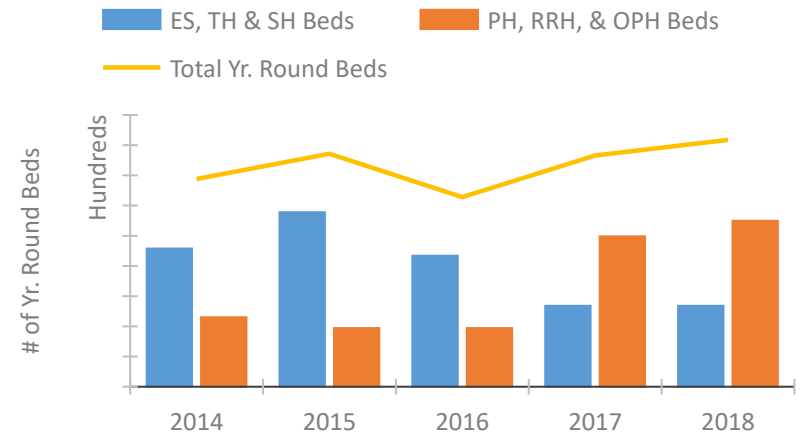


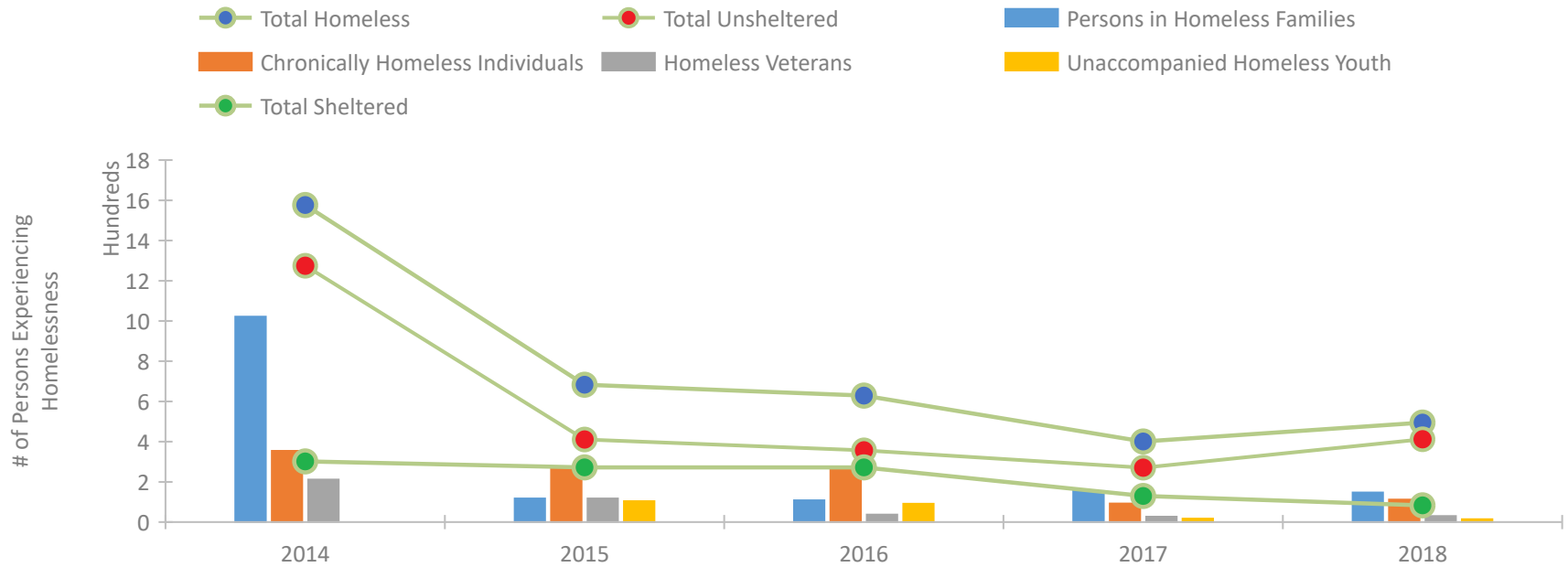
CoC Performance Profile FL-505 Fort Walton Beach/Okaloosa, Walton Counties CoC



Housing Inventory Count by Program Type



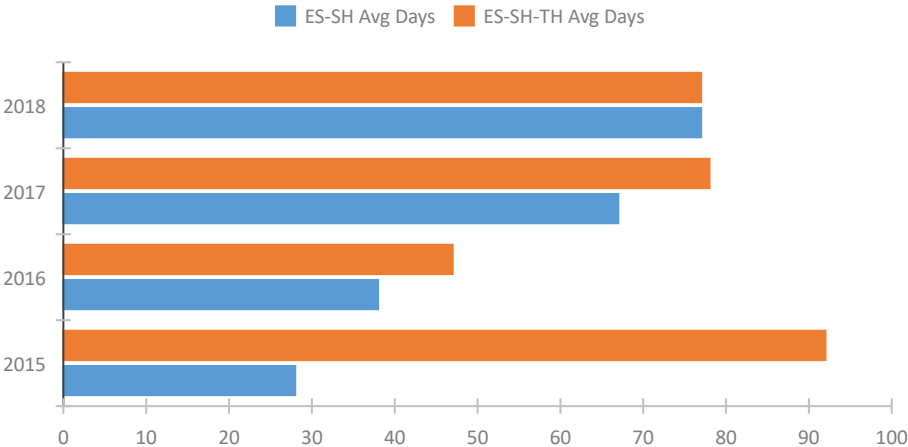
Homeless Population – Point-in-Time (PIT) Count



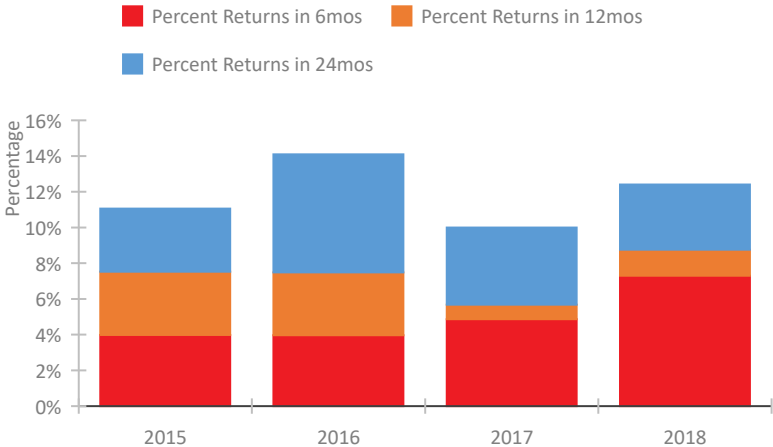
CoC Performance Profile FL-505

Fort Walton Beach/Okaloosa, Walton Counties CoC

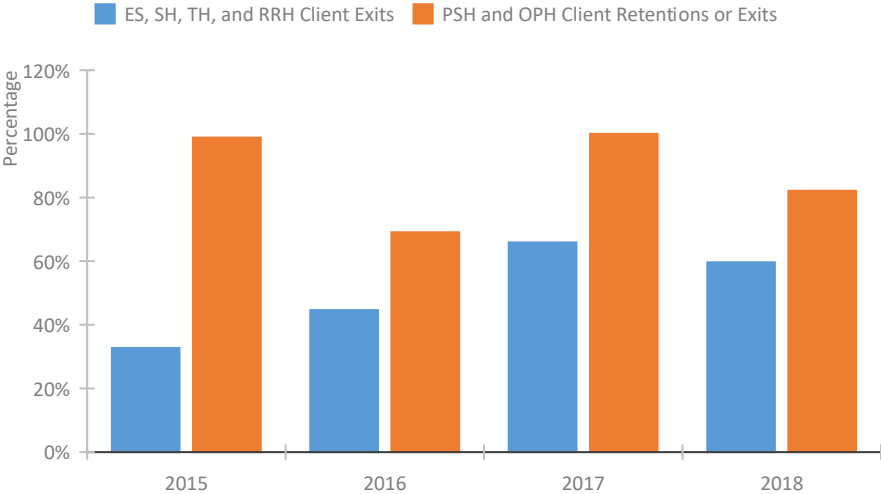
Length of Time Homeless



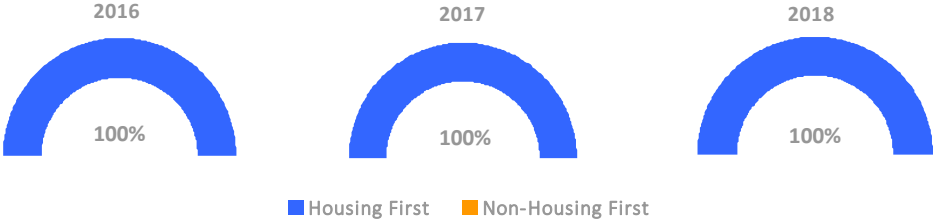
Returns to Homelessness Over Time



Exits to Permanent Housing by Program Type



Proportion of Housing First Projects by Year



Number of Projects by Year			
	2016	2017	2018
Housing First Projects	2	1	3
Non-Housing First Projects	0	0	0

Data Summary: FL-505 Fort Walton Beach/Okaloosa, Walton Counties CoC

Point-In-Time Count Summary

	2014	2015	2016	2017	2018	2017-18 Change	% Change
Number of Sheltered Persons in Families	93	117	103	116	61	-55	-47%
Number of Unsheltered Persons in Families	928	0	5	38	86	48	126%
Number of Sheltered Individuals	209	155	169	14	22	8	57%
Number of Unsheltered Individuals	347	411	352	233	326	93	40%
Total Homeless Persons	1,577	683	629	401	495	94	23%
Number of Sheltered Families	34	41	37	36	19	-17	-47%
Number of Unsheltered Families	359	0	2	8	26	18	225%
Number of Total Families	393	41	39	44	45	1	2%
Sheltered Chronically Homeless Individuals	123	23	24	6	1	-5	-83%
Unsheltered Chronically Homeless Individuals	231	251	243	86	111	25	29%
Total Chronically Homeless Individuals	354	274	267	92	112	20	22%
Sheltered Veterans	45	50	10	6	2	-4	-67%
Unsheltered Veterans	166	67	27	21	28	7	33%
Total Veterans	211	117	37	27	30	3	11%
Sheltered Unaccompanied Youth (up to 24)	--	37	44	4	0	-4	-100%
Unsheltered Unaccompanied Youth (up to 24)	--	67	47	13	14	1	8%
Total Unaccompanied Youth (up to 24)	--	104	91	17	14	-3	-18%

System Performance Measures Summary

	2014	2015	2016	2017	2018	2017-18 Change	% Change
Average Length of Time Homeless (days)	N/A	92	47	78	77	-1	-1.3%
Rate People Return to Homelessness in 6 Months	N/A	4.0%	4.0%	4.9%	7.3%	2.4%	N/A
Number of People who are Homeless for the First Time	N/A	727	454	339	249	-90	-26.5%
Rate People Exit from ES, SH, TH, and RRH to PH	N/A	32.7%	44.6%	65.9%	59.6%	-6.3%	N/A
Rate People in PSH and OPH Retain or Exit to PH	N/A	98.8%	69.1%	100.0%	82.1%	-17.9%	N/A

Housing Inventory Count Summary

	2014	2015	2016	2017	2018	2017-18 Change	% Change
Emergency Shelter (ES)	81	141	99	60	60	0	0%
Transitional Housing (TH)	148	148	118	74	74	0	0%
Permanent Supportive Housing (PSH)	60	97	42	216	231	15	7%
Rapid Re-Housing (RRH)	--	--	--	33	44	11	33%

Award Summary

	2014	2015	2016	2017	2018	2017-18 Change	% Change
Continuum of Care (CoC)	\$628,910	\$576,097	\$574,187	\$622,419	\$676,587	\$54,168	9%
ESG (FL state recipient - no direct funding)	\$4,605,599	\$5,019,268	\$5,098,790	\$5,183,540	\$5,380,797	\$197,257	4%