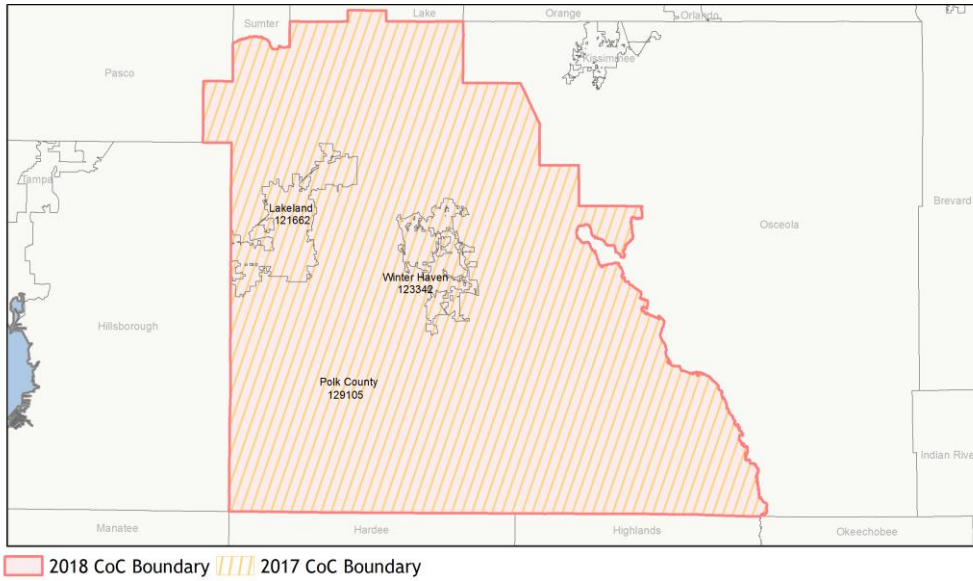
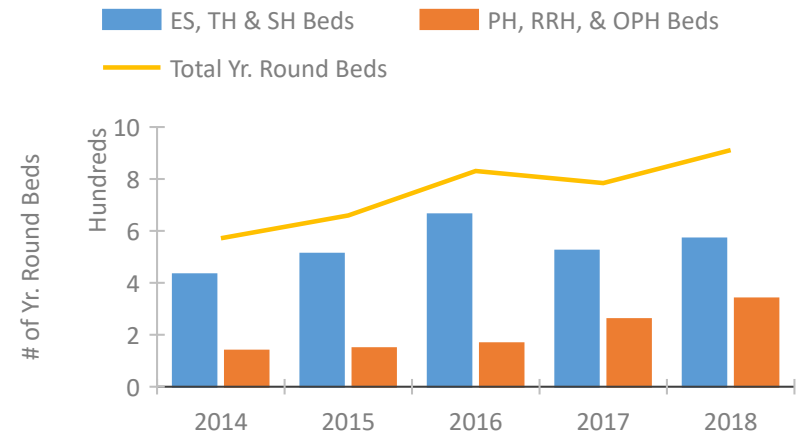


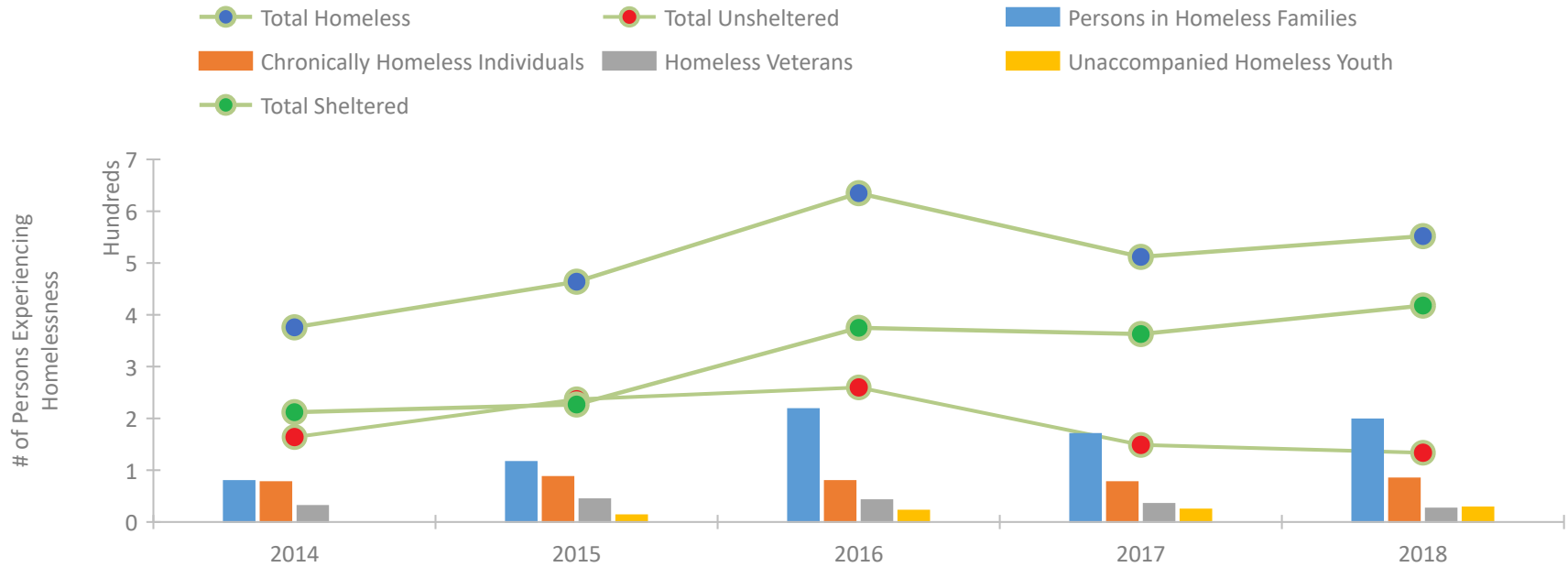
# CoC Performance Profile FL-503 Lakeland, Winterhaven/Polk County CoC



## Housing Inventory Count by Program Type

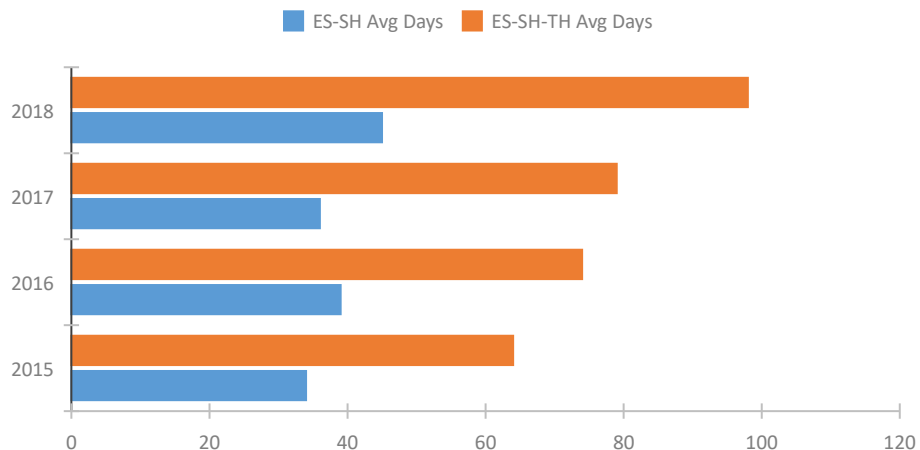


## Homeless Population – Point-in-Time (PIT) Count

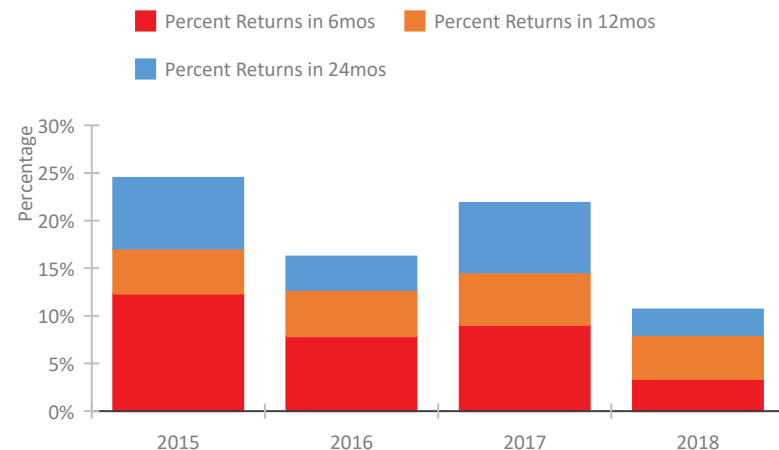


## CoC Performance Profile FL-503 Lakeland, Winterhaven/Polk County CoC

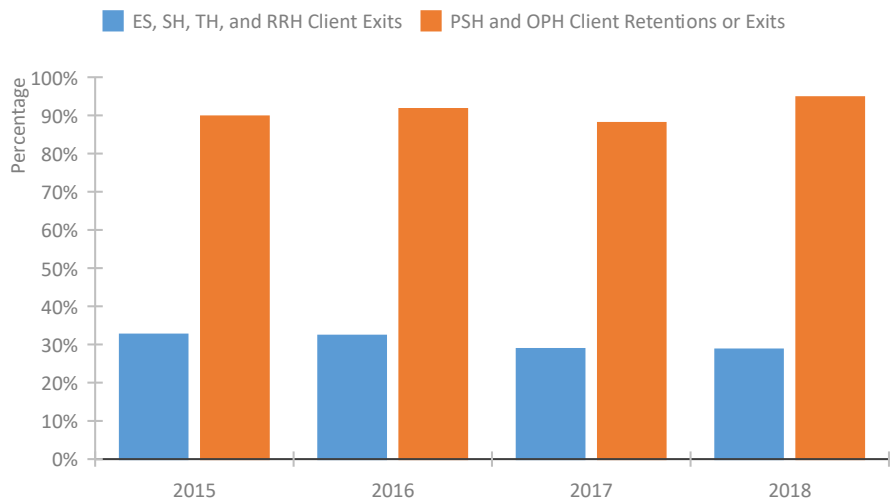
### Length of Time Homeless



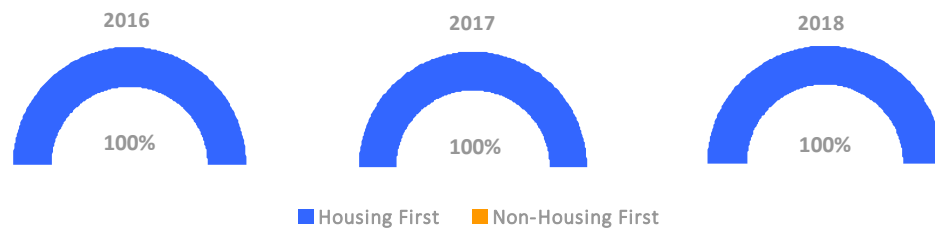
### Returns to Homelessness Over Time



### Exits to Permanent Housing by Program Type



### Proportion of Housing First Projects by Year



### Number of Projects by Year

	2016	2017	2018
Housing First Projects	12	13	12
Non-Housing First Projects	0	0	0

## Data Summary: FL-503 Lakeland, Winterhaven/Polk County CoC

### Point-In-Time Count Summary

	2014	2015	2016	2017	2018	2017-18 Change	% Change
Number of Sheltered Persons in Families	64	85	174	168	198	30	18%
Number of Unsheltered Persons in Families	15	31	44	2	0	-2	-100%
Number of Sheltered Individuals	148	142	201	195	220	25	13%
Number of Unsheltered Individuals	149	206	216	147	134	-13	-9%
<b>Total Homeless Persons</b>	<b>376</b>	<b>464</b>	<b>635</b>	<b>512</b>	<b>552</b>	<b>40</b>	<b>8%</b>
Number of Sheltered Families	18	28	47	44	52	8	18%
Number of Unsheltered Families	5	9	9	1	0	-1	-100%
<b>Number of Total Families</b>	<b>23</b>	<b>37</b>	<b>56</b>	<b>45</b>	<b>52</b>	<b>7</b>	<b>16%</b>
Sheltered Chronically Homeless Individuals	19	8	14	11	21	10	91%
Unsheltered Chronically Homeless Individuals	58	79	65	66	63	-3	-5%
<b>Total Chronically Homeless Individuals</b>	<b>77</b>	<b>87</b>	<b>79</b>	<b>77</b>	<b>84</b>	<b>7</b>	<b>9%</b>
Sheltered Veterans	8	14	20	18	16	-2	-11%
Unsheltered Veterans	23	30	22	17	10	-7	-41%
<b>Total Veterans</b>	<b>31</b>	<b>44</b>	<b>42</b>	<b>35</b>	<b>26</b>	<b>-9</b>	<b>-26%</b>
Sheltered Unaccompanied Youth (up to 24)	--	9	12	17	21	4	24%
Unsheltered Unaccompanied Youth (up to 24)	--	4	10	7	7	0	0%
<b>Total Unaccompanied Youth (up to 24)</b>	<b>--</b>	<b>13</b>	<b>22</b>	<b>24</b>	<b>28</b>	<b>4</b>	<b>17%</b>

### System Performance Measures Summary

	2014	2015	2016	2017	2018	2017-18 Change	% Change
Average Length of Time Homeless (days)	N/A	64	74	79	98	19	24.1%
Rate People Return to Homelessness in 6 Months	N/A	12.3%	7.9%	9.0%	3.4%	-5.7%	N/A
Number of People who are Homeless for the First Time	N/A	1769	2005	1983	1753	-230	-11.6%
Rate People Exit from ES, SH, TH, and RRH to PH	N/A	32.6%	32.3%	28.8%	28.7%	-0.2%	N/A
Rate People in PSH and OPH Retain or Exit to PH	N/A	89.7%	91.7%	88.0%	94.8%	6.8%	N/A

### Housing Inventory Count Summary

	2014	2015	2016	2017	2018	2017-18 Change	% Change
Emergency Shelter (ES)	178	222	300	208	270	62	30%
Transitional Housing (TH)	255	290	364	316	301	-15	-5%
Permanent Supportive Housing (PSH)	139	148	155	253	270	17	7%
Rapid Re-Housing (RRH)	--	--	12	7	70	63	900%

### Award Summary

	2014	2015	2016	2017	2018	2017-18 Change	% Change
<b>Continuum of Care (CoC)</b>	\$994,538	\$1,614,059	\$1,636,029	\$1,863,611	\$1,974,655	\$111,044	6%
<b>Emergency Solutions Grants (ESG)</b>	\$239,759	\$263,263	\$268,683	\$265,784	\$265,524	(\$260)	0%