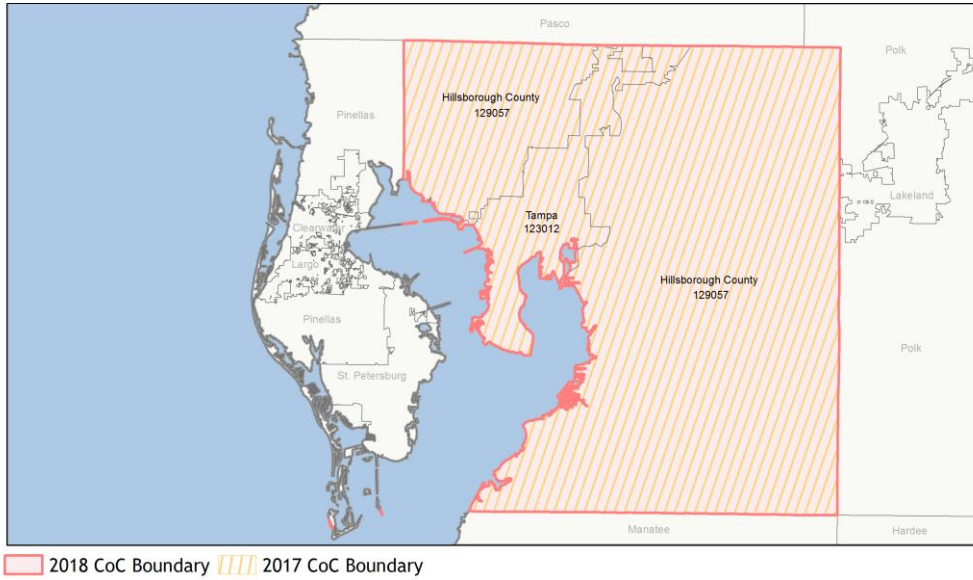
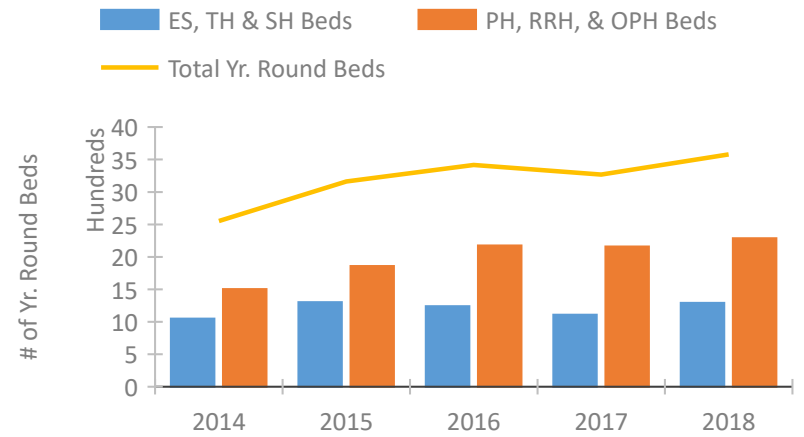


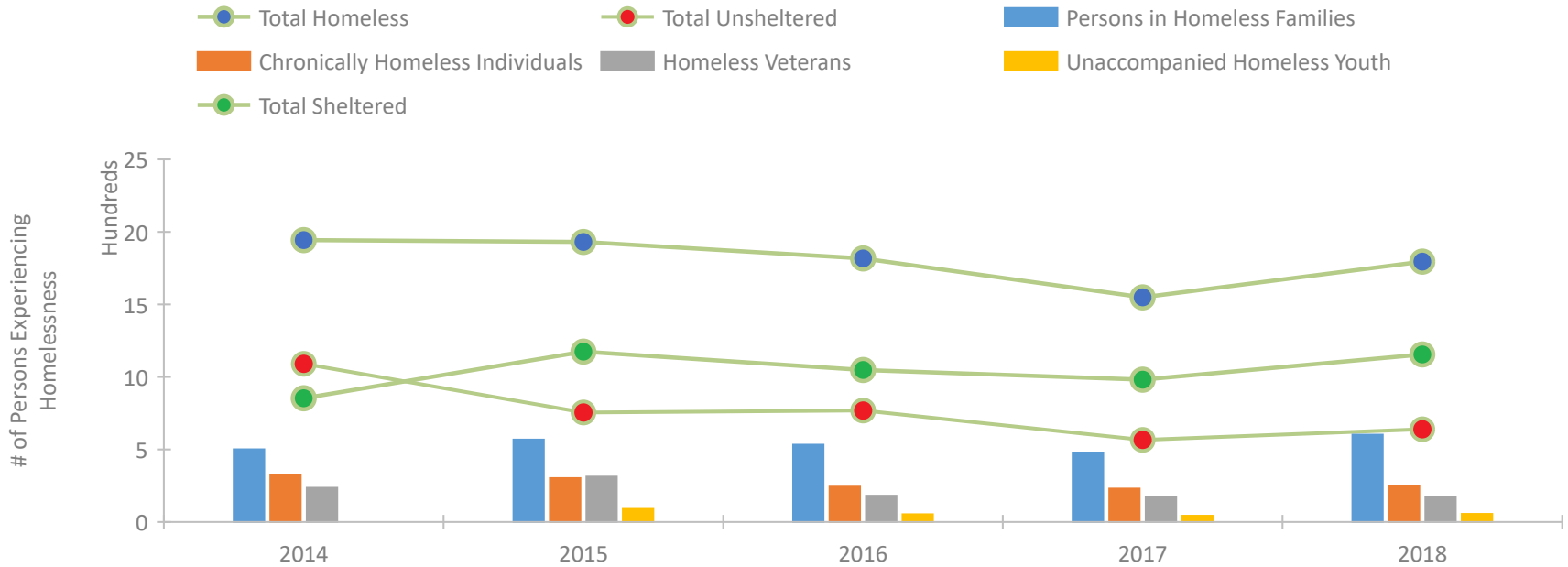
CoC Performance Profile FL-501 Tampa/Hillsborough County CoC



Housing Inventory Count by Program Type

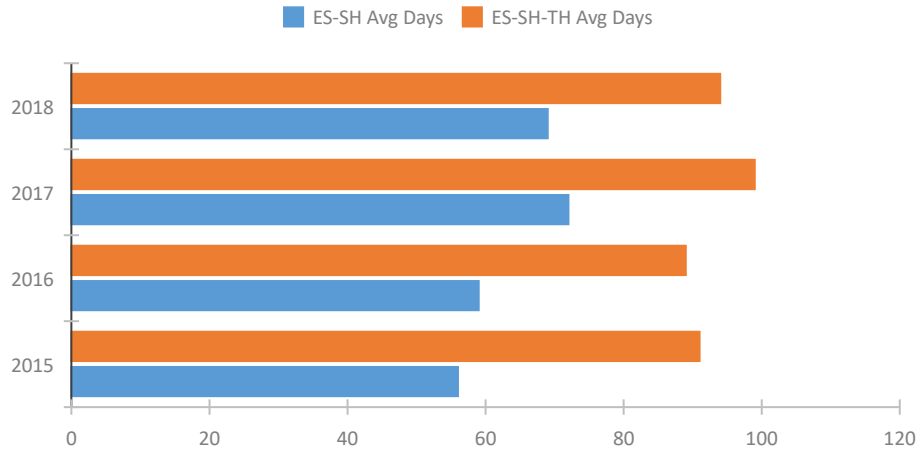


Homeless Population – Point-in-Time (PIT) Count

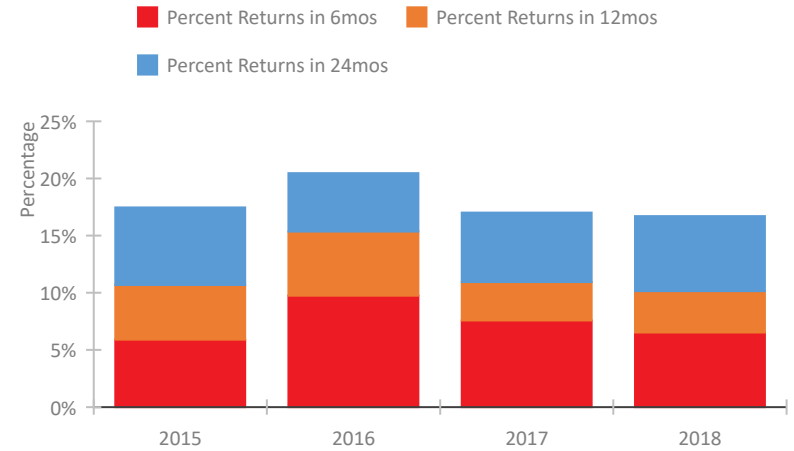


CoC Performance Profile FL-501 Tampa/Hillsborough County CoC

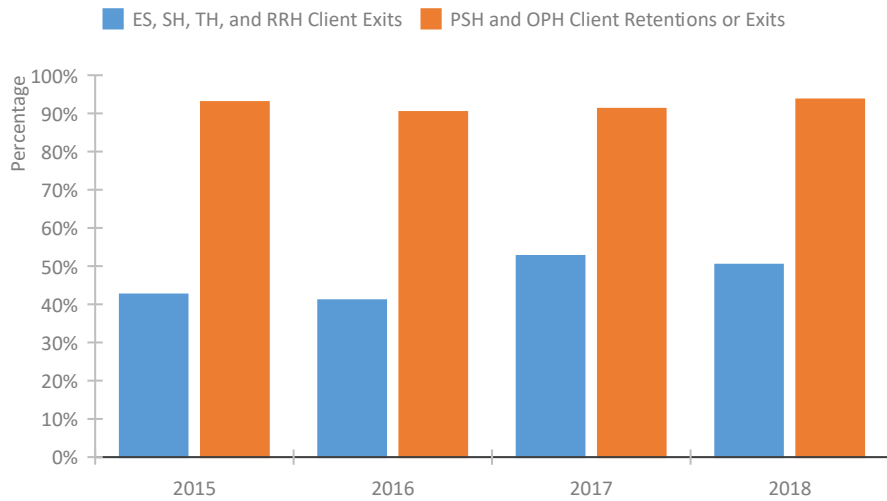
Length of Time Homeless



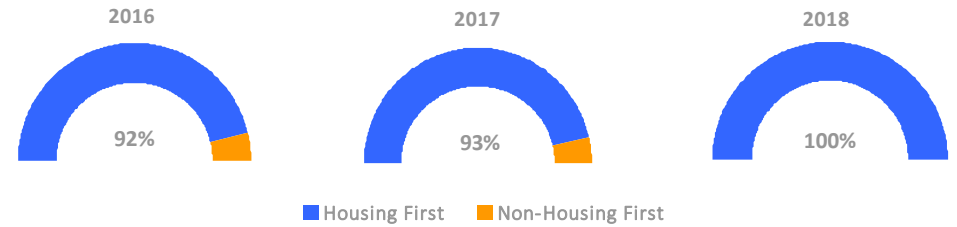
Returns to Homelessness Over Time



Exits to Permanent Housing by Program Type



Proportion of Housing First Projects by Year



Number of Projects by Year

	2016	2017	2018
Housing First Projects	12	13	14
Non-Housing First Projects	1	1	0

Data Summary: FL-501 Tampa/Hillsborough County CoC

Point-In-Time Count Summary

	2014	2015	2016	2017	2018	2017-18 Change	% Change
Number of Sheltered Persons in Families	302	507	471	464	575	111	24%
Number of Unsheltered Persons in Families	199	61	62	15	27	12	80%
Number of Sheltered Individuals	551	668	577	518	580	62	12%
Number of Unsheltered Individuals	892	695	707	552	613	61	11%
Total Homeless Persons	1,944	1,931	1,817	1,549	1,795	246	16%
Number of Sheltered Families	95	152	151	151	167	16	11%
Number of Unsheltered Families	93	17	15	3	7	4	133%
Number of Total Families	188	169	166	154	174	20	13%
Sheltered Chronically Homeless Individuals	30	96	53	56	65	9	16%
Unsheltered Chronically Homeless Individuals	296	207	191	174	185	11	6%
Total Chronically Homeless Individuals	326	303	244	230	250	20	9%
Sheltered Veterans	110	161	112	123	119	-4	-3%
Unsheltered Veterans	126	152	69	49	52	3	6%
Total Veterans	236	313	181	172	171	-1	-1%
Sheltered Unaccompanied Youth (up to 24)	--	42	18	21	30	9	43%
Unsheltered Unaccompanied Youth (up to 24)	--	48	35	22	26	4	18%
Total Unaccompanied Youth (up to 24)	--	90	53	43	56	13	30%

System Performance Measures Summary

	2014	2015	2016	2017	2018	2017-18 Change	% Change
Average Length of Time Homeless (days)	N/A	91	89	99	94	-5	-5.1%
Rate People Return to Homelessness in 6 Months	N/A	5.9%	9.8%	7.6%	6.5%	-1%	N/A
Number of People who are Homeless for the First Time	N/A	4008	4040	3601	3576	-25	-0.7%
Rate People Exit from ES, SH, TH, and RRH to PH	N/A	42.6%	41.1%	52.7%	50.4%	-2.3%	N/A
Rate People in PSH and OPH Retain or Exit to PH	N/A	93.0%	90.4%	91.2%	93.6%	2.5%	N/A

Housing Inventory Count Summary

	2014	2015	2016	2017	2018	2017-18 Change	% Change
Emergency Shelter (ES)	449	735	717	755	960	205	27%
Safe Haven (SH)	10	10	10	15	16	1	7%
Transitional Housing (TH)	590	557	513	338	316	-22	-7%
Permanent Supportive Housing (PSH)	1,322	1,437	1,460	1,575	1,609	34	2%
Rapid Re-Housing (RRH)	80	347	638	535	592	57	11%
Other Permanent Housing (OPH)	102	76	79	50	87	37	74%

Award Summary

	2014	2015	2016	2017	2018	2017-18 Change	% Change
Continuum of Care (CoC)	\$6,243,959	\$6,240,062	\$6,242,867	\$6,317,794	\$6,347,400	\$29,606	0%
Emergency Solutions Grants (ESG)	\$677,000	\$737,318	\$777,566	\$990,167	\$798,692	(\$191,475)	-19%