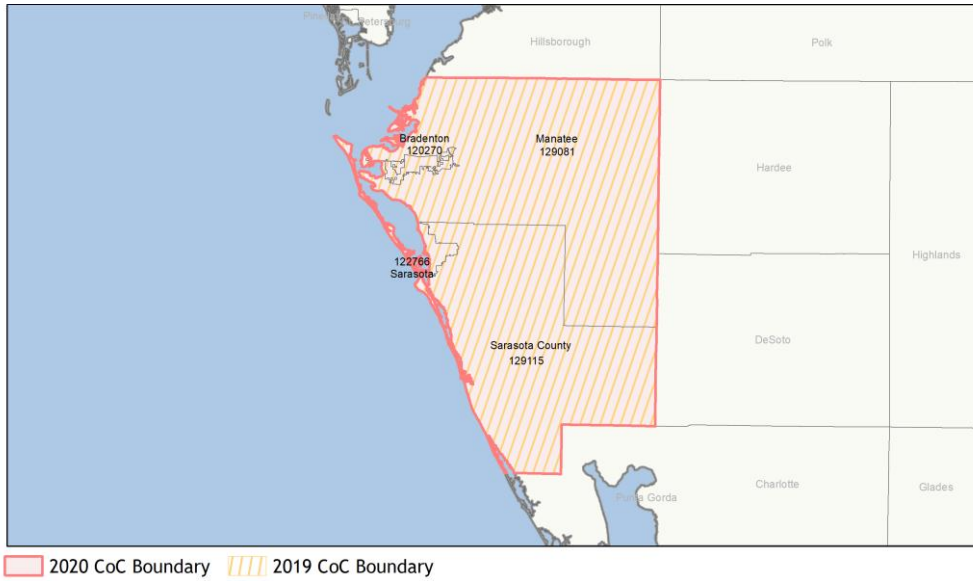
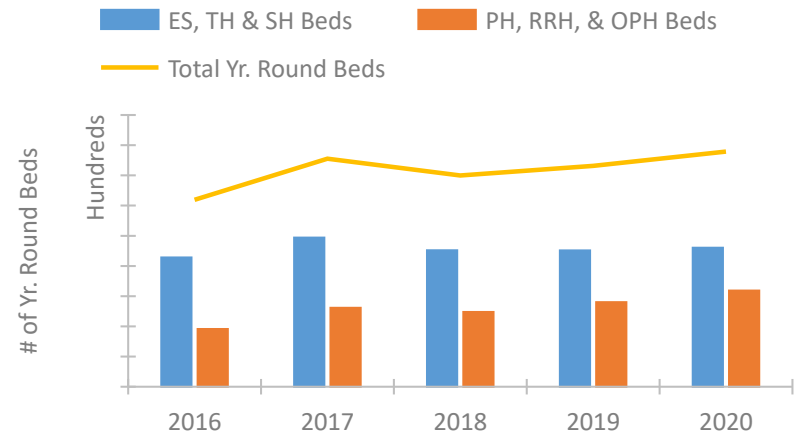


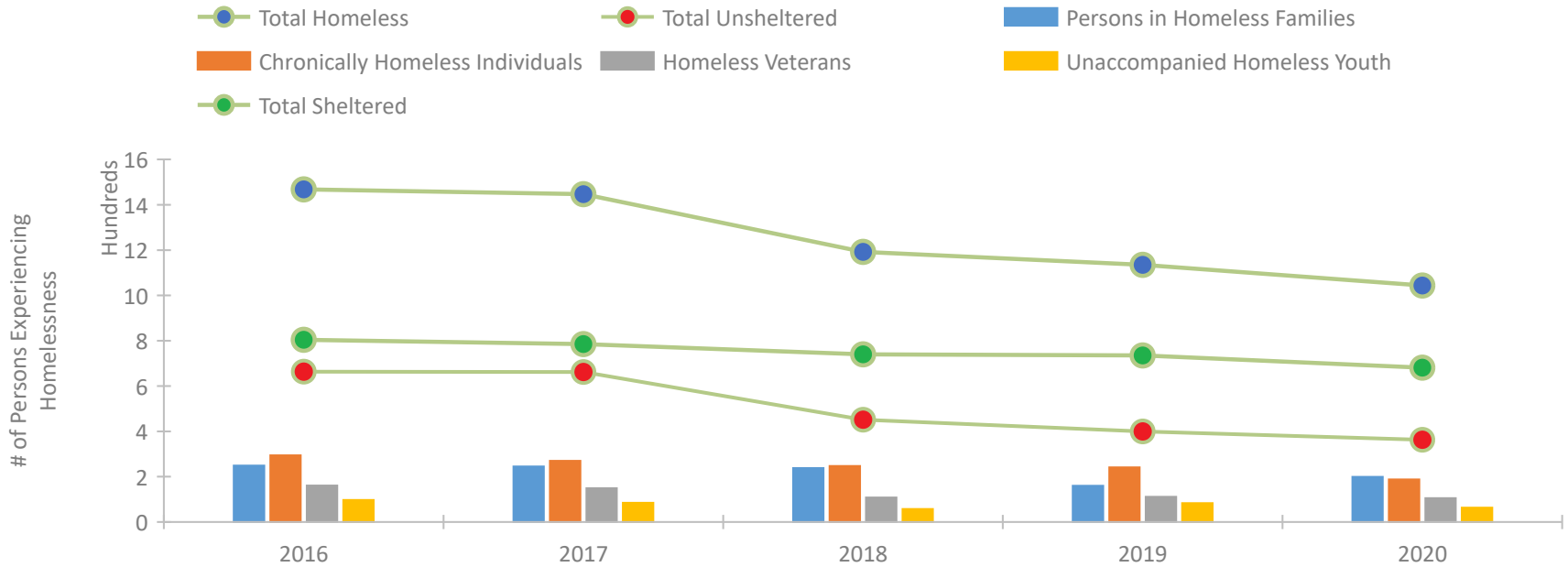
CoC Performance Profile FL-500 Sarasota, Bradenton/Manatee, Sarasota Counties CoC



Housing Inventory Count by Program Type

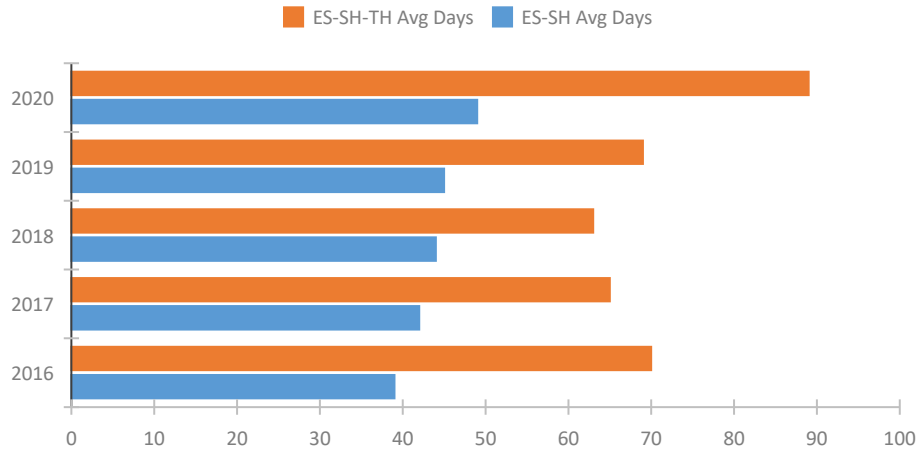


Homeless Population – Point-in-Time (PIT) Count

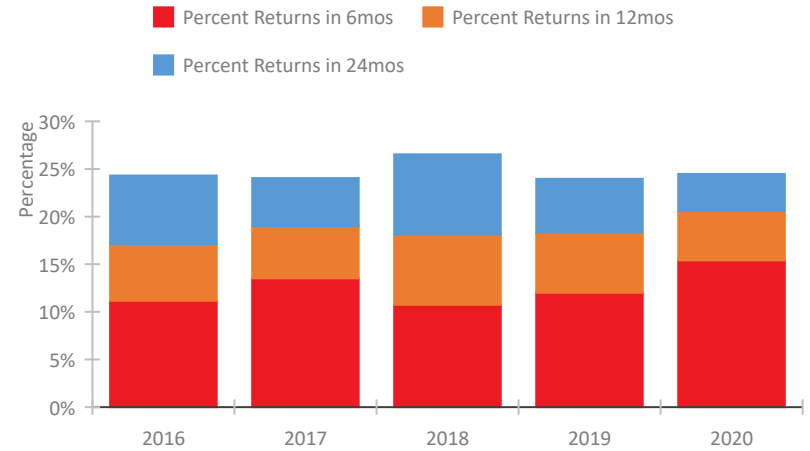


CoC Performance Profile FL-500 Sarasota, Bradenton/Manatee, Sarasota Counties CoC

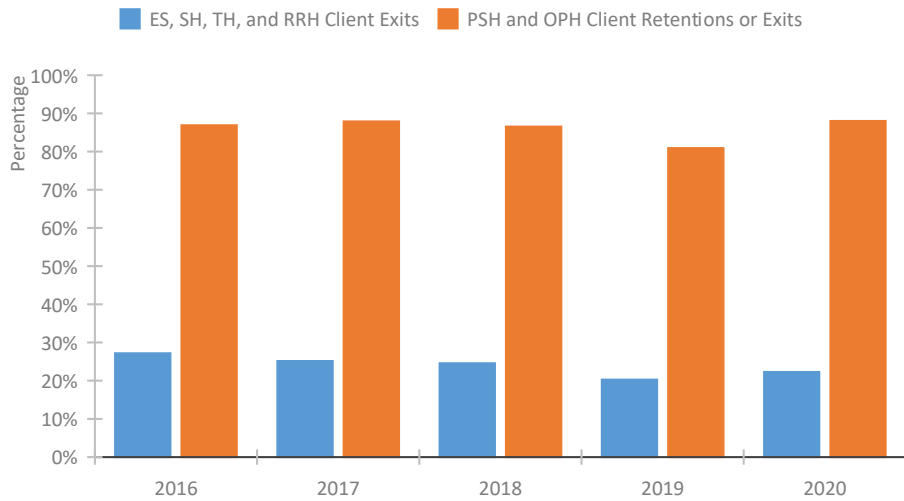
Length of Time Homeless



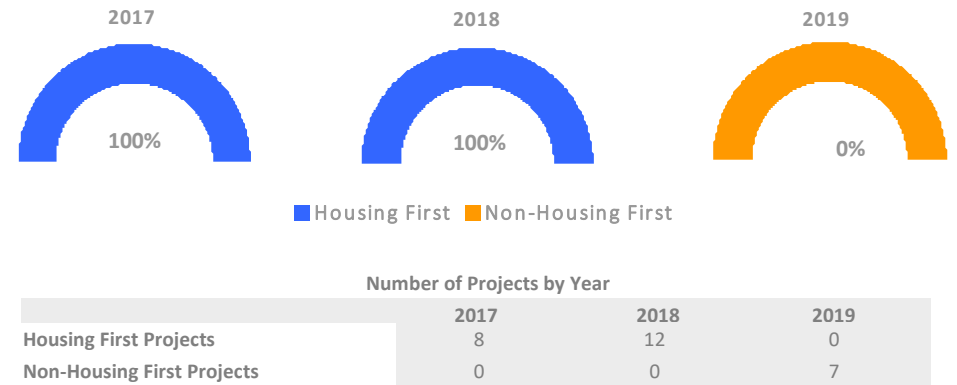
Returns to Homelessness Over Time



Exits to Permanent Housing by Program Type



Proportion of Housing First Projects by Year*



*In 2020 HUD awarded renewal projects noncompetitively, therefore no new data was collected and Housing First data remains the same from 2019 to 2020.

Data Summary: FL-500 Sarasota, Bradenton/Manatee, Sarasota Counties CoC

Point-In-Time Count Summary

	2016	2017	2018	2019	2020	2019-20 Change	% Change
Number of Sheltered Persons in Families	197	188	221	151	185	34	23%
Number of Unsheltered Persons in Families	52	57	17	9	14	5	56%
Number of Sheltered Individuals	607	597	519	584	496	-88	-15%
Number of Unsheltered Individuals	612	605	435	391	349	-42	-11%
Total Homeless Persons	1,468	1,447	1,192	1,135	1,044	-91	-8%
Number of Sheltered Families	66	60	71	41	65	24	59%
Number of Unsheltered Families	13	14	5	4	5	1	25%
Number of Total Families	79	74	76	45	70	25	56%
Sheltered Chronically Homeless Individuals	39	36	69	84	71	-13	-15%
Unsheltered Chronically Homeless Individuals	255	234	178	157	117	-40	-25%
Total Chronically Homeless Individuals	294	270	247	241	188	-53	-22%
Sheltered Veterans	99	77	59	71	73	2	3%
Unsheltered Veterans	62	72	49	40	32	-8	-20%
Total Veterans	161	149	108	111	105	-6	-5%
Sheltered Unaccompanied Youth (up to 24)	70	58	44	61	47	-14	-23%
Unsheltered Unaccompanied Youth (up to 24)	27	27	13	22	16	-6	-27%
Total Unaccompanied Youth (up to 24)	97	85	57	83	63	-20	-24%

System Performance Measures Summary

	2016	2017	2018	2018	2020	2019-20 Change	% Change
Average Length of Time Homeless (days)	70	65	63	69	89	20	29%
Rate People Return to Homelessness in 6 Months	11.2%	13.5%	10.7%	12.0%	15.4%	3.4%	N/A
Number of People who are Homeless for the First Time	3,433	3,508	3,436	3,095	2,037	-1,058	-34.2%
Rate People Exit from ES, SH, TH, and RRH to PH	27.2%	25.1%	24.6%	20.3%	22.3%	2%	N/A
Rate People in PSH and OPH Retain or Exit to PH	86.9%	87.9%	86.6%	80.9%	88.0%	7.1%	N/A

Housing Inventory Count Summary

	2016	2017	2018	2019	2020	2019-20 Change	% Change
Emergency Shelter (ES)	396	595	559	561	534	-27	-5%
Transitional Housing (TH)	460	393	345	342	387	45	13%
Permanent Supportive Housing (PSH)	339	456	427	414	404	-10	-2%
Rapid Re-Housing (RRH)	43	67	68	146	113	-33	-23%
Other Permanent Housing (OPH)	--	--	--	--	120	--	--

Award Summary

	2016	2017	2018	2019	2020	2019-20 Change	% Change
Continuum of Care (CoC)	\$871,530	\$959,495	--	\$1,290,692	\$1,340,466	\$49,774	4%
Emergency Solutions Grants (ESG)	\$285,621	\$288,260	\$286,448	\$300,943	\$312,134	\$11,191	4%