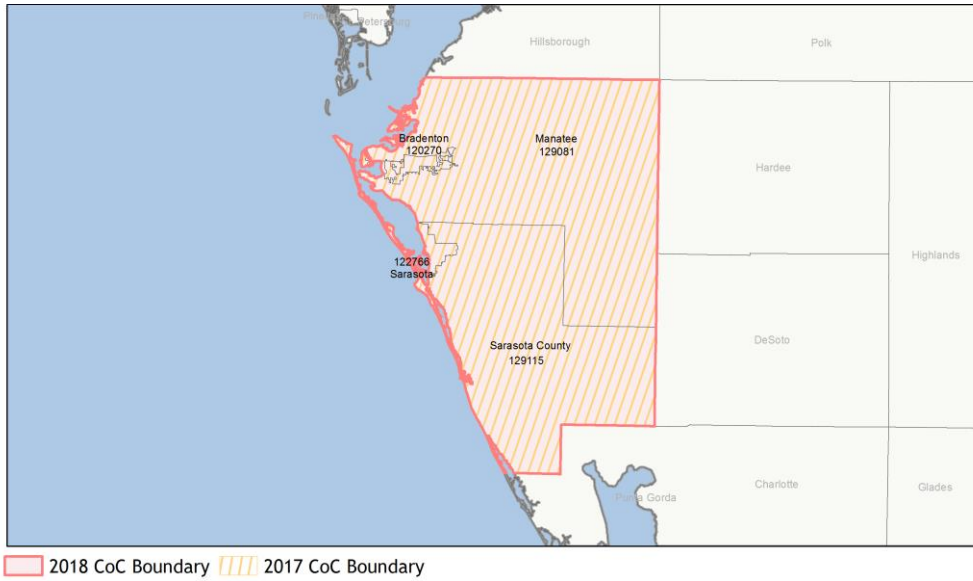
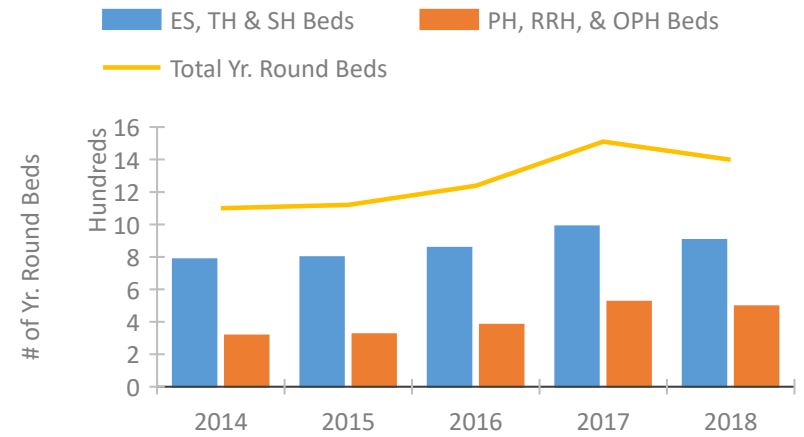


CoC Performance Profile FL-500

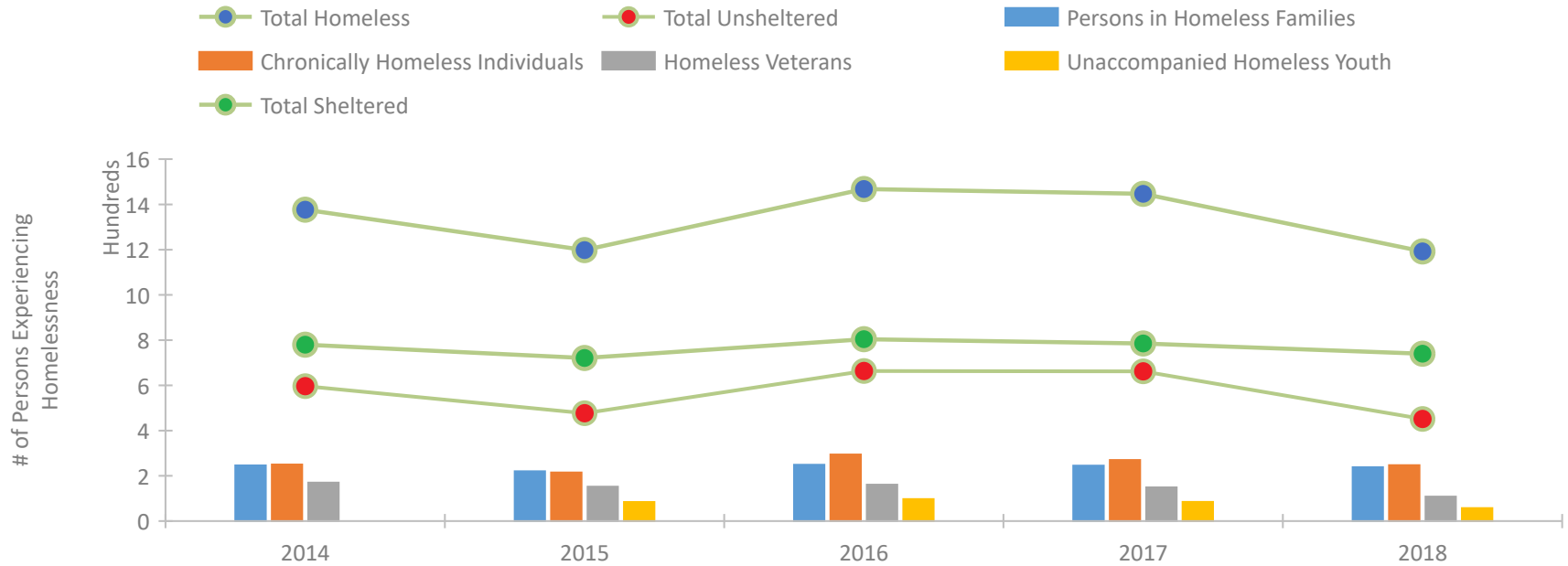
Sarasota, Bradenton/Manatee, Sarasota Counties CoC



Housing Inventory Count by Program Type



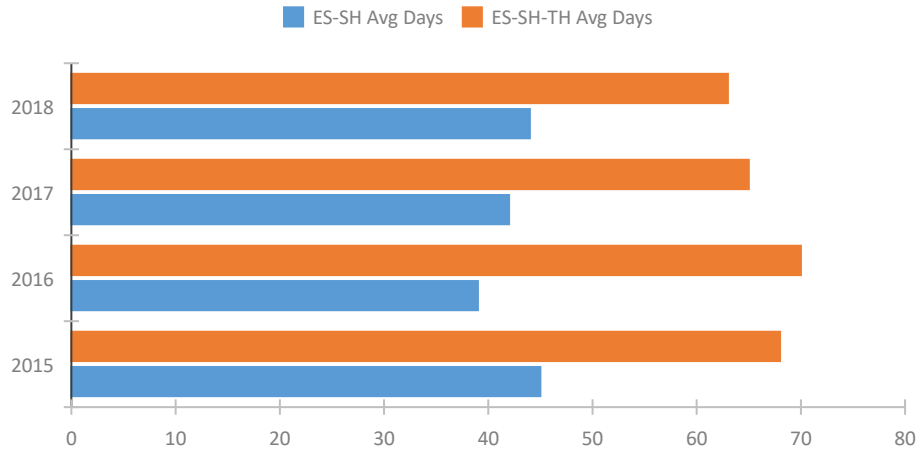
Homeless Population – Point-in-Time (PIT) Count



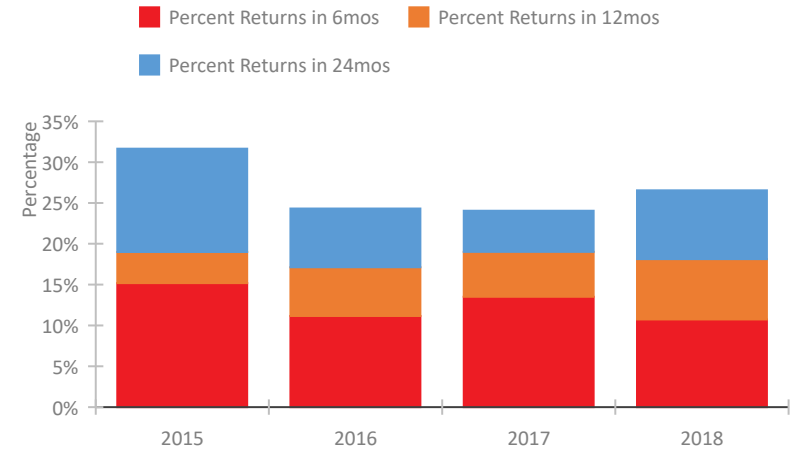
CoC Performance Profile FL-500

Sarasota, Bradenton/Manatee, Sarasota Counties CoC

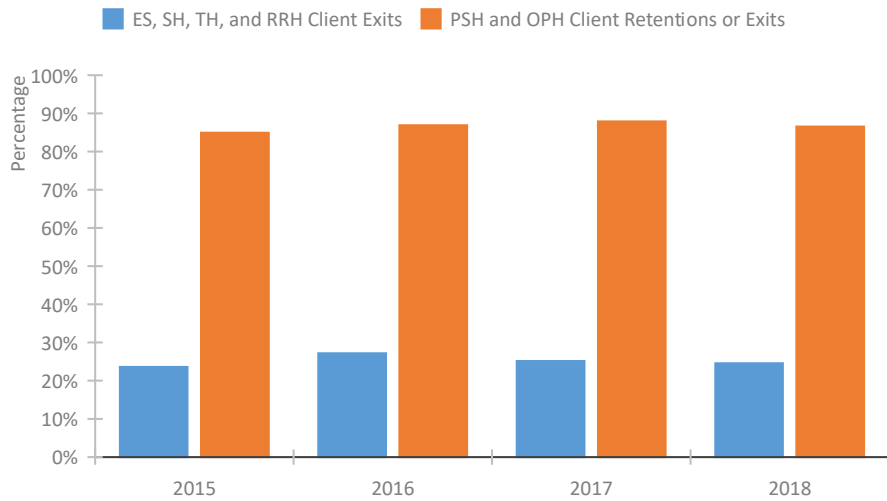
Length of Time Homeless



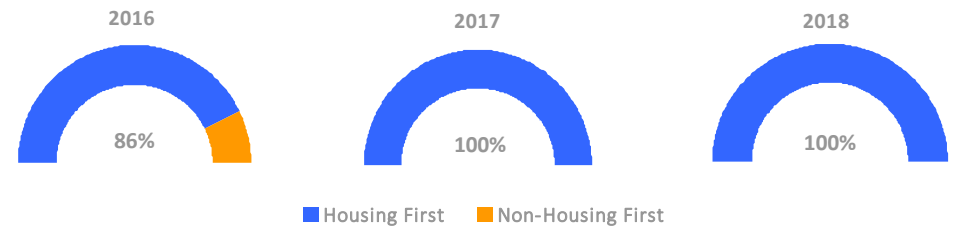
Returns to Homelessness Over Time



Exits to Permanent Housing by Program Type



Proportion of Housing First Projects by Year



Number of Projects by Year

	2016	2017	2018
Housing First Projects	6	8	12
Non-Housing First Projects	1	0	0

Data Summary: FL-500 Sarasota, Bradenton/Manatee, Sarasota Counties CoC

Point-In-Time Count Summary

	2014	2015	2016	2017	2018	2017-18 Change	% Change
Number of Sheltered Persons in Families	220	198	197	188	221	33	18%
Number of Unsheltered Persons in Families	26	22	52	57	17	-40	-70%
Number of Sheltered Individuals	560	523	607	597	519	-78	-13%
Number of Unsheltered Individuals	571	455	612	605	435	-170	-28%
Total Homeless Persons	1,377	1,198	1,468	1,447	1,192	-255	-18%
Number of Sheltered Families	56	71	66	60	71	11	18%
Number of Unsheltered Families	9	10	13	14	5	-9	-64%
Number of Total Families	65	81	79	74	76	2	3%
Sheltered Chronically Homeless Individuals	60	36	39	36	69	33	92%
Unsheltered Chronically Homeless Individuals	190	179	255	234	178	-56	-24%
Total Chronically Homeless Individuals	250	215	294	270	247	-23	-9%
Sheltered Veterans	95	95	99	77	59	-18	-23%
Unsheltered Veterans	75	57	62	72	49	-23	-32%
Total Veterans	170	152	161	149	108	-41	-28%
Sheltered Unaccompanied Youth (up to 24)	--	56	70	58	44	-14	-24%
Unsheltered Unaccompanied Youth (up to 24)	--	28	27	27	13	-14	-52%
Total Unaccompanied Youth (up to 24)	--	84	97	85	57	-28	-33%

System Performance Measures Summary

	2014	2015	2016	2017	2018	2017-18 Change	% Change
Average Length of Time Homeless (days)	N/A	68	70	65	63	-2	-3.1%
Rate People Return to Homelessness in 6 Months	N/A	15.2%	11.2%	13.5%	10.7%	-2.8%	N/A
Number of People who are Homeless for the First Time	N/A	3514	3433	3508	3436	-72	-2.1%
Rate People Exit from ES, SH, TH, and RRH to PH	N/A	23.6%	27.2%	25.1%	24.6%	-0.6%	N/A
Rate People in PSH and OPH Retain or Exit to PH	N/A	84.9%	86.9%	87.9%	86.6%	-1.3%	N/A

Housing Inventory Count Summary

	2014	2015	2016	2017	2018	2017-18 Change	% Change
Emergency Shelter (ES)	387	444	396	595	559	-36	-6%
Transitional Housing (TH)	398	354	460	393	345	-48	-12%
Permanent Supportive Housing (PSH)	283	275	339	456	427	-29	-6%
Rapid Re-Housing (RRH)	32	48	43	67	68	1	1%

Award Summary

	2014	2015	2016	2017	2018	2017-18 Change	% Change
Emergency Solutions Grants (ESG)	\$260,834	\$281,380	\$285,621	\$288,260	\$286,448	(\$1,812)	-1%