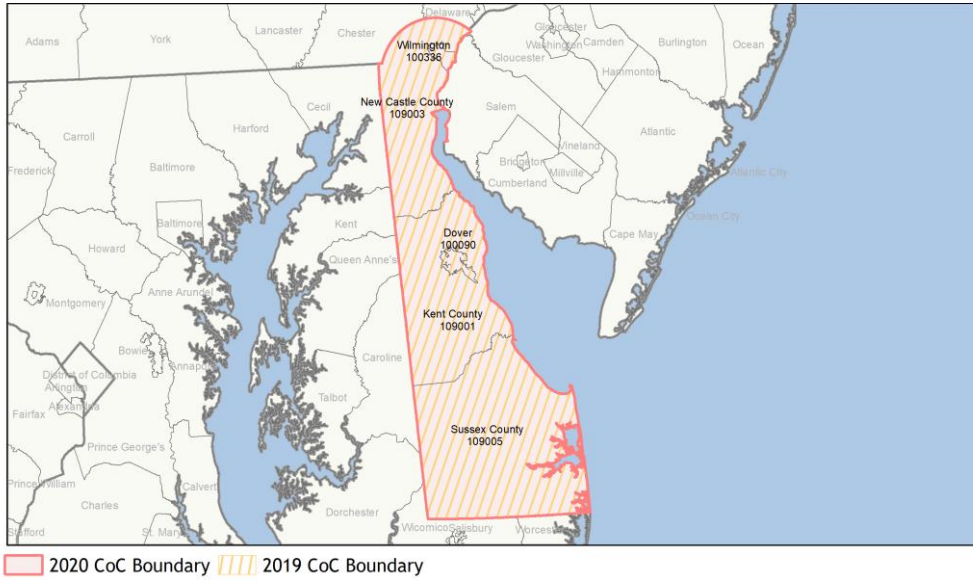
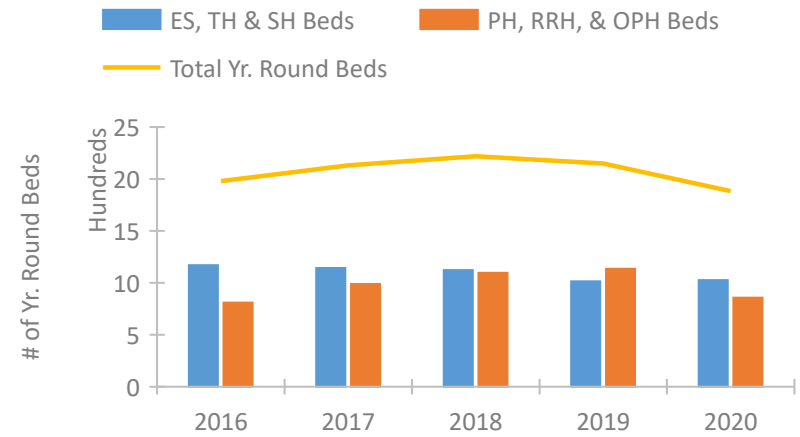


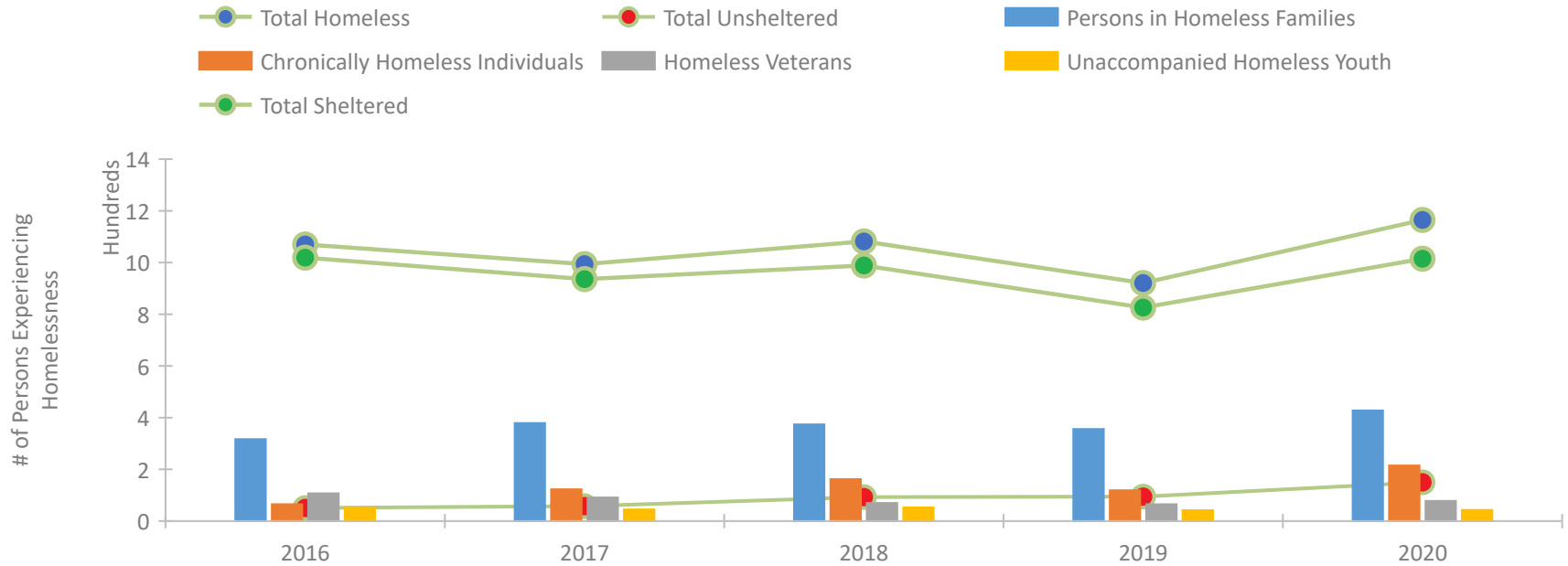
## CoC Performance Profile DE-500 Delaware Statewide CoC



### Housing Inventory Count by Program Type

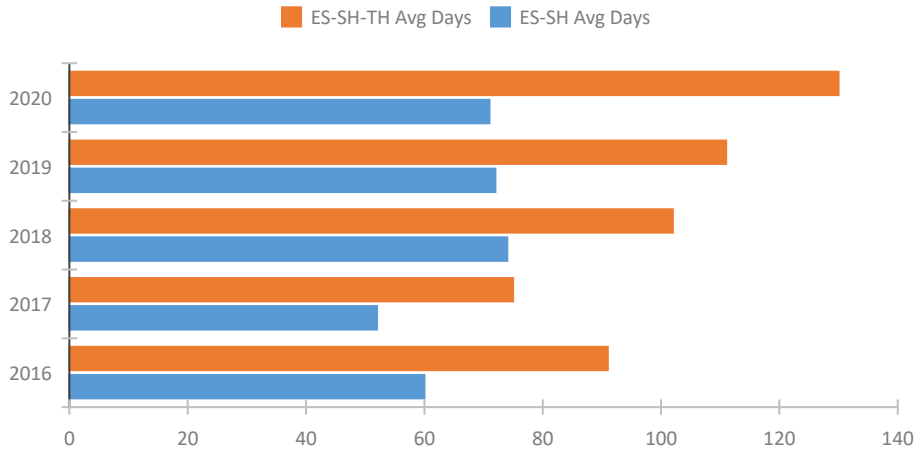


### Homeless Population – Point-in-Time (PIT) Count

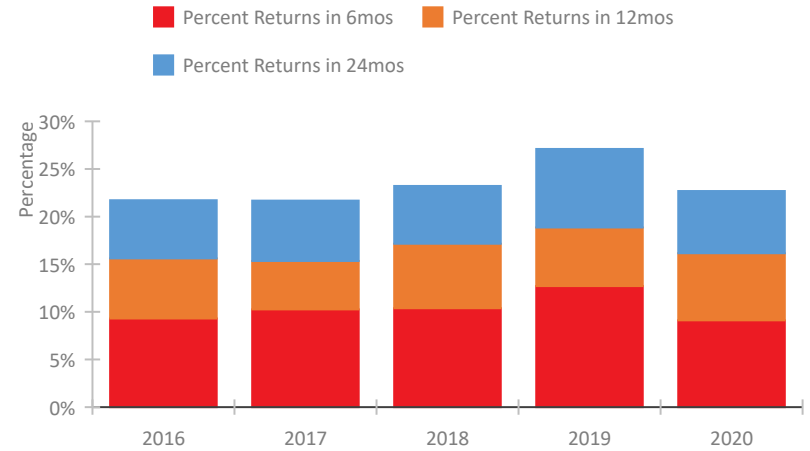


## CoC Performance Profile DE-500 Delaware Statewide CoC

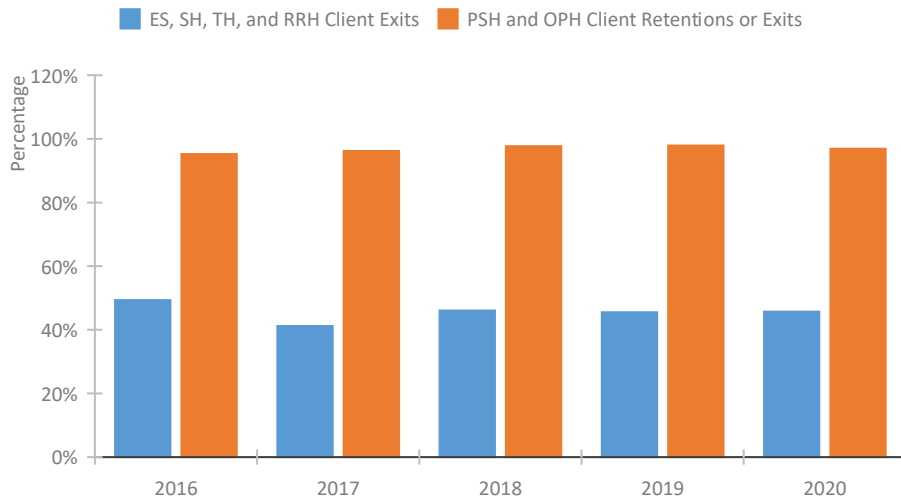
### Length of Time Homeless



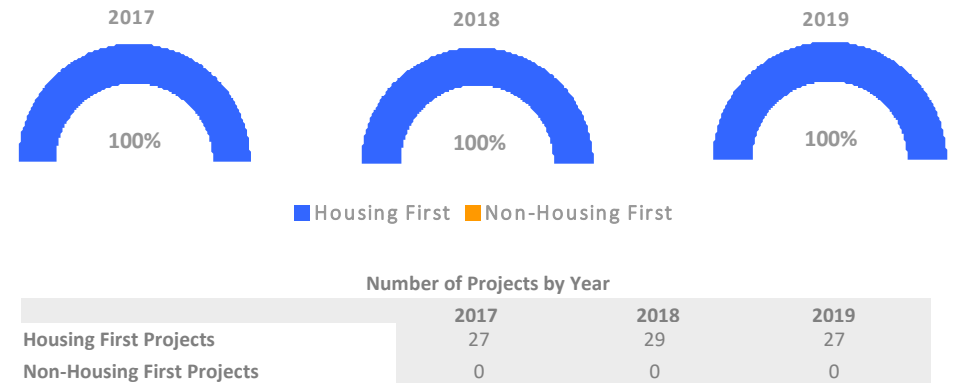
### Returns to Homelessness Over Time



### Exits to Permanent Housing by Program Type



### Proportion of Housing First Projects by Year\*



\*In 2020 HUD awarded renewal projects noncompetitively, therefore no new data was collected and Housing First data remains the same from 2019 to 2020.

## Data Summary: DE-500 Delaware Statewide CoC

### Point-In-Time Count Summary

	2016	2017	2018	2019	2020	2019-20 Change	% Change
Number of Sheltered Persons in Families	317	373	374	337	414	77	23%
Number of Unsheltered Persons in Families	0	6	0	19	14	-5	-26%
Number of Sheltered Individuals	702	563	615	489	601	112	23%
Number of Unsheltered Individuals	51	52	93	76	136	60	79%
<b>Total Homeless Persons</b>	<b>1,070</b>	<b>994</b>	<b>1,082</b>	<b>921</b>	<b>1,165</b>	<b>244</b>	<b>26%</b>
Number of Sheltered Families	108	127	125	111	132	21	19%
Number of Unsheltered Families	0	2	0	5	4	-1	-20%
<b>Number of Total Families</b>	<b>108</b>	<b>129</b>	<b>125</b>	<b>116</b>	<b>136</b>	<b>20</b>	<b>17%</b>
Sheltered Chronically Homeless Individuals	63	98	143	86	167	81	94%
Unsheltered Chronically Homeless Individuals	2	25	19	33	48	15	45%
<b>Total Chronically Homeless Individuals</b>	<b>65</b>	<b>123</b>	<b>162</b>	<b>119</b>	<b>215</b>	<b>96</b>	<b>81%</b>
Sheltered Veterans	103	85	67	61	71	10	16%
Unsheltered Veterans	4	6	3	4	7	3	75%
<b>Total Veterans</b>	<b>107</b>	<b>91</b>	<b>70</b>	<b>65</b>	<b>78</b>	<b>13</b>	<b>20%</b>
Sheltered Unaccompanied Youth (up to 24)	46	43	45	39	33	-6	-15%
Unsheltered Unaccompanied Youth (up to 24)	5	2	8	3	10	7	233%
<b>Total Unaccompanied Youth (up to 24)</b>	<b>51</b>	<b>45</b>	<b>53</b>	<b>42</b>	<b>43</b>	<b>1</b>	<b>2%</b>

### System Performance Measures Summary

	2016	2017	2018	2018	2020	2019-20 Change	% Change
Average Length of Time Homeless (days)	91	75	102	111	130	19	17.1%
Rate People Return to Homelessness in 6 Months	9.3%	10.3%	10.4%	12.7%	9.1%	-3.6%	N/A
Number of People who are Homeless for the First Time	2,260	2,836	1,934	1,751	1,641	-110	-6.3%
Rate People Exit from ES, SH, TH, and RRH to PH	49.3%	41.2%	46.0%	45.5%	45.7%	0.2%	N/A
Rate People in PSH and OPH Retain or Exit to PH	95.2%	96.2%	97.7%	97.9%	96.9%	-1%	N/A

### Housing Inventory Count Summary

	2016	2017	2018	2019	2020	2019-20 Change	% Change
Emergency Shelter (ES)	590	575	629	577	644	67	12%
Transitional Housing (TH)	580	568	488	437	382	-55	-13%
Permanent Supportive Housing (PSH)	601	671	850	904	670	-234	-26%
Rapid Re-Housing (RRH)	144	216	155	131	169	38	29%
Other Permanent Housing (OPH)	65	101	92	100	19	-81	-81%

### Award Summary

	2016	2017	2018	2019	2020	2019-20 Change	% Change
<b>Continuum of Care (CoC)</b>	\$7,858,054	\$7,952,480	\$8,249,505	\$8,065,668	\$8,344,406	\$278,738	3%
<b>Emergency Solutions Grants (ESG)</b>	\$382,634	\$371,444	\$370,171	\$381,934	\$388,037	\$6,103	2%