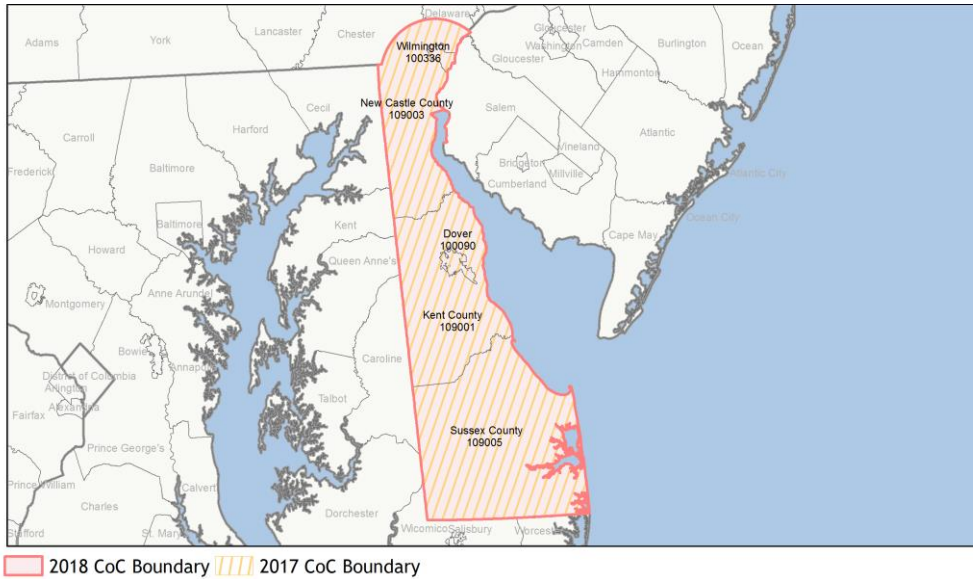
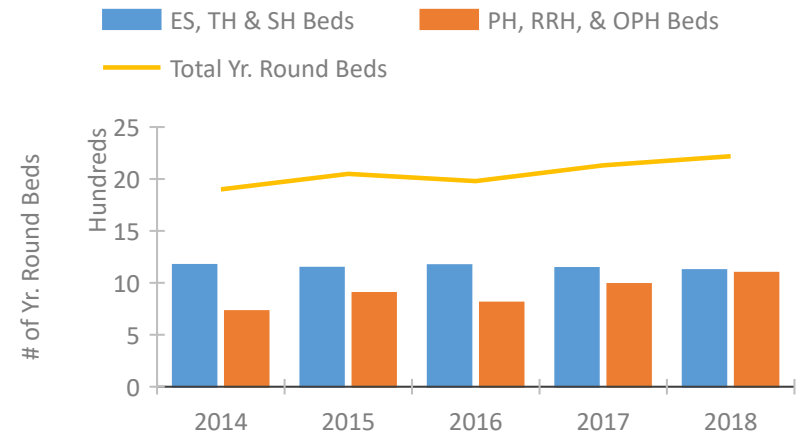


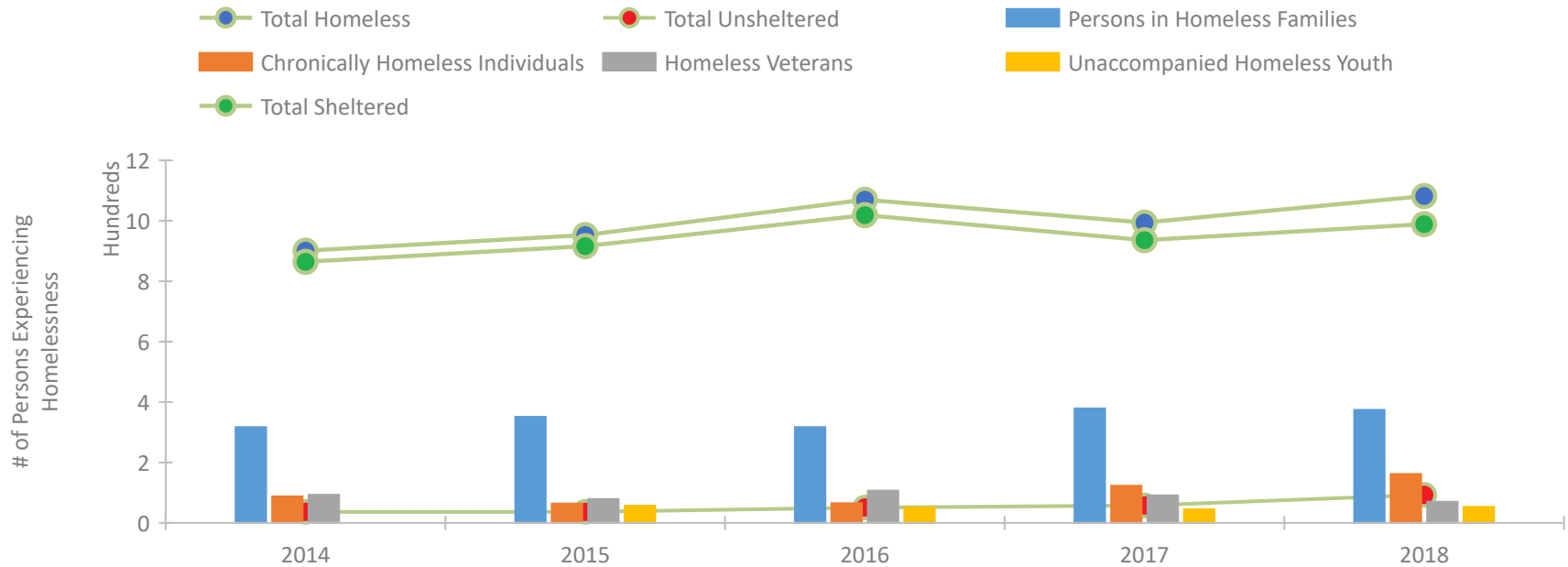
## CoC Performance Profile DE-500 Delaware Statewide CoC



### Housing Inventory Count by Program Type

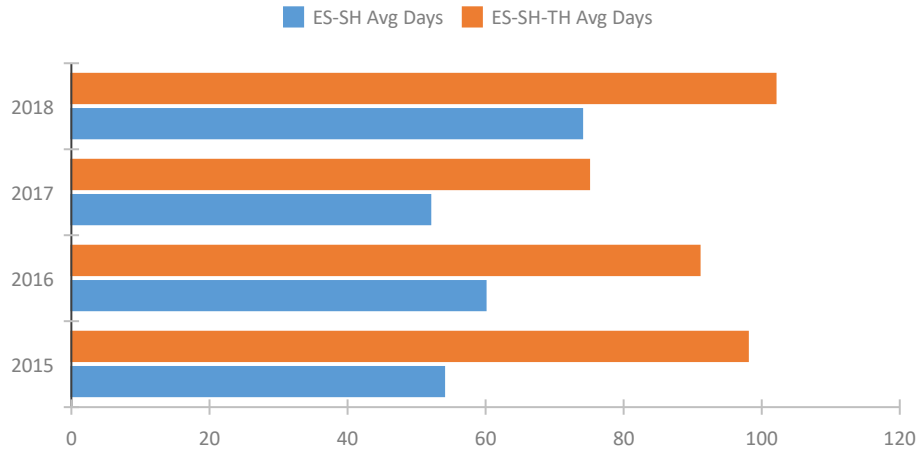


### Homeless Population – Point-in-Time (PIT) Count

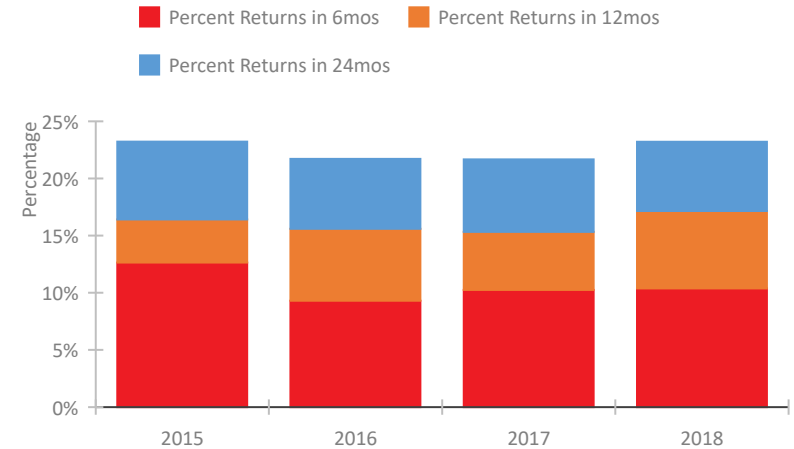


## CoC Performance Profile DE-500 Delaware Statewide CoC

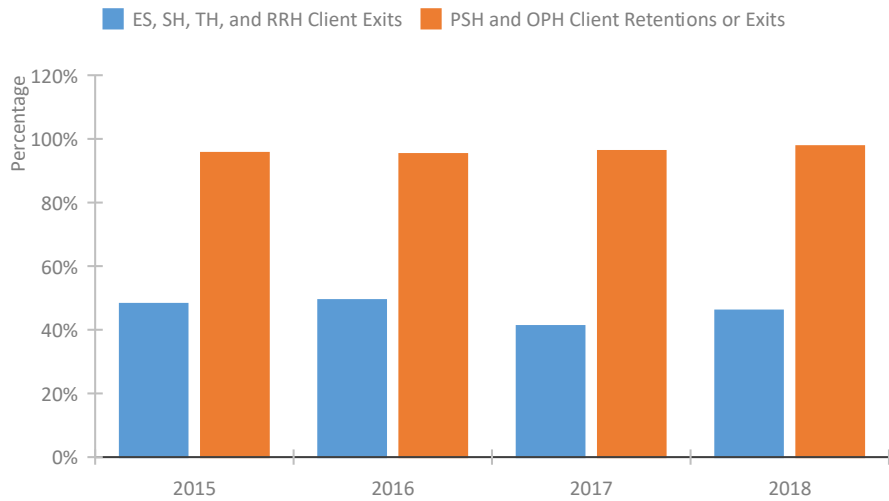
### Length of Time Homeless



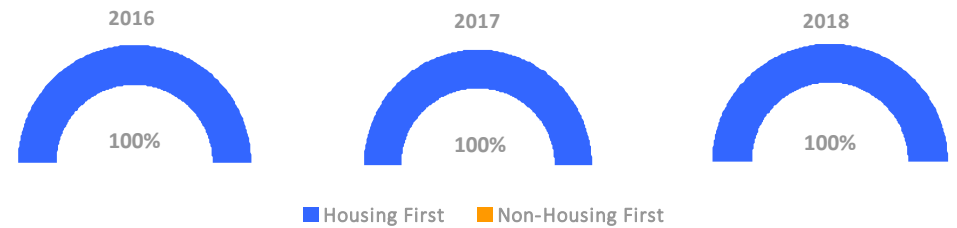
### Returns to Homelessness Over Time



### Exits to Permanent Housing by Program Type



### Proportion of Housing First Projects by Year



### Number of Projects by Year

	2016	2017	2018
Housing First Projects	27	27	29
Non-Housing First Projects	0	0	0

## Data Summary: DE-500 Delaware Statewide CoC

### Point-In-Time Count Summary

	2014	2015	2016	2017	2018	2017-18 Change	% Change
Number of Sheltered Persons in Families	310	351	317	373	374	1	0%
Number of Unsheltered Persons in Families	7	0	0	6	0	-6	-100%
Number of Sheltered Individuals	554	565	702	563	615	52	9%
Number of Unsheltered Individuals	30	37	51	52	93	41	79%
<b>Total Homeless Persons</b>	<b>901</b>	<b>953</b>	<b>1,070</b>	<b>994</b>	<b>1,082</b>	<b>88</b>	9%
Number of Sheltered Families	102	115	108	127	125	-2	-2%
Number of Unsheltered Families	2	0	0	2	0	-2	-100%
<b>Number of Total Families</b>	<b>104</b>	<b>115</b>	<b>108</b>	<b>129</b>	<b>125</b>	<b>-4</b>	-3%
Sheltered Chronically Homeless Individuals	79	59	63	98	143	45	46%
Unsheltered Chronically Homeless Individuals	9	5	2	25	19	-6	-24%
<b>Total Chronically Homeless Individuals</b>	<b>88</b>	<b>64</b>	<b>65</b>	<b>123</b>	<b>162</b>	<b>39</b>	32%
Sheltered Veterans	89	74	103	85	67	-18	-21%
Unsheltered Veterans	4	5	4	6	3	-3	-50%
<b>Total Veterans</b>	<b>93</b>	<b>79</b>	<b>107</b>	<b>91</b>	<b>70</b>	<b>-21</b>	-23%
Sheltered Unaccompanied Youth (up to 24)	--	56	46	43	45	2	5%
Unsheltered Unaccompanied Youth (up to 24)	--	1	5	2	8	6	300%
<b>Total Unaccompanied Youth (up to 24)</b>	<b>--</b>	<b>57</b>	<b>51</b>	<b>45</b>	<b>53</b>	<b>8</b>	18%

### System Performance Measures Summary

	2014	2015	2016	2017	2018	2017-18 Change	% Change
Average Length of Time Homeless (days)	N/A	98	91	75	102	27	36%
Rate People Return to Homelessness in 6 Months	N/A	12.6%	9.3%	10.3%	10.4%	0.1%	N/A
Number of People who are Homeless for the First Time	N/A	2175	2260	2836	1934	-902	-31.8%
Rate People Exit from ES, SH, TH, and RRH to PH	N/A	48.1%	49.3%	41.2%	46.0%	4.9%	N/A
Rate People in PSH and OPH Retain or Exit to PH	N/A	95.6%	95.2%	96.2%	97.7%	1.5%	N/A

### Housing Inventory Count Summary

	2014	2015	2016	2017	2018	2017-18 Change	% Change
Emergency Shelter (ES)	552	588	590	575	629	54	9%
Safe Haven (SH)	--	--	--	--	5	--	--
Transitional Housing (TH)	620	558	580	568	488	-80	-14%
Permanent Supportive Housing (PSH)	598	727	601	671	850	179	27%
Rapid Re-Housing (RRH)	130	176	144	216	155	-61	-28%
Other Permanent Housing (OPH)	--	--	65	101	92	-9	-9%

### Award Summary

	2014	2015	2016	2017	2018	2017-18 Change	% Change
<b>Continuum of Care (CoC)</b>	\$6,745,030	\$7,785,779	\$7,858,054	\$7,952,480	\$8,249,505	\$297,025	4%
<b>Emergency Solutions Grants (ESG)</b>	\$357,319	\$389,174	\$382,634	\$371,444	\$370,171	(\$1,273)	0%