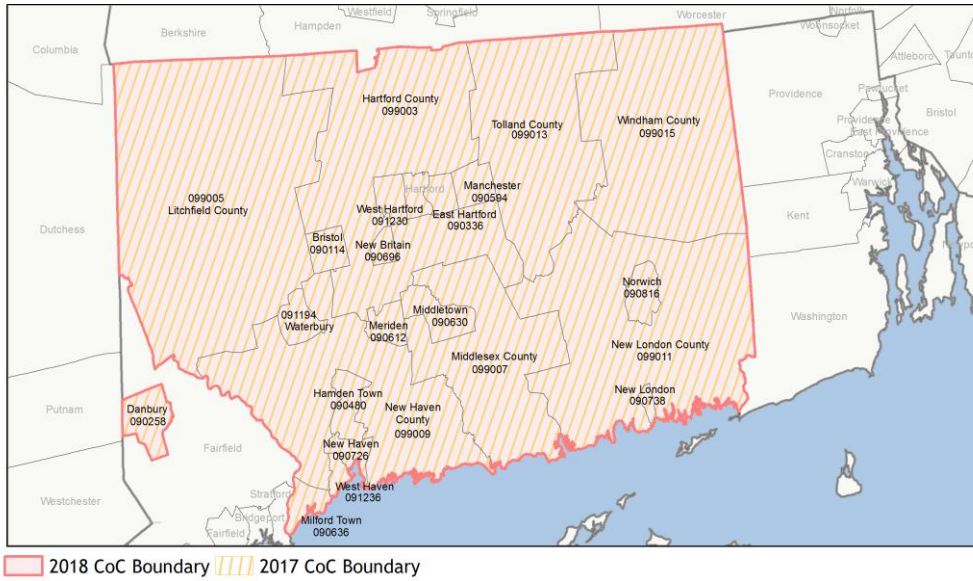
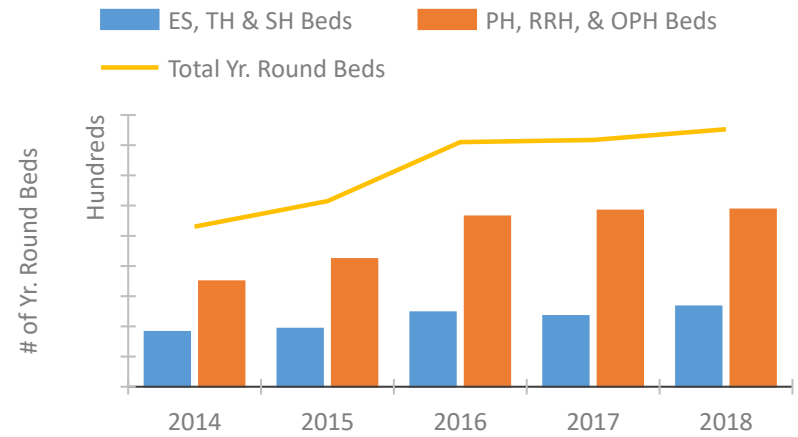


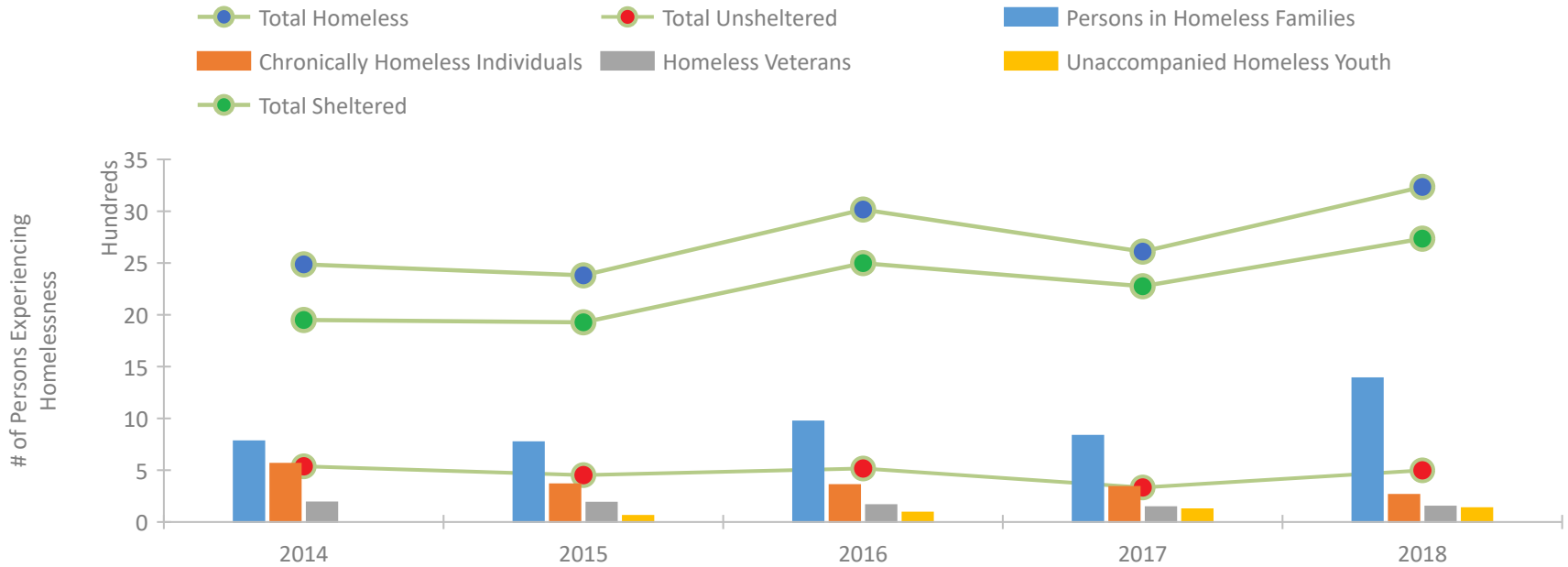
CoC Performance Profile CT-505 Connecticut Balance of State CoC



Housing Inventory Count by Program Type

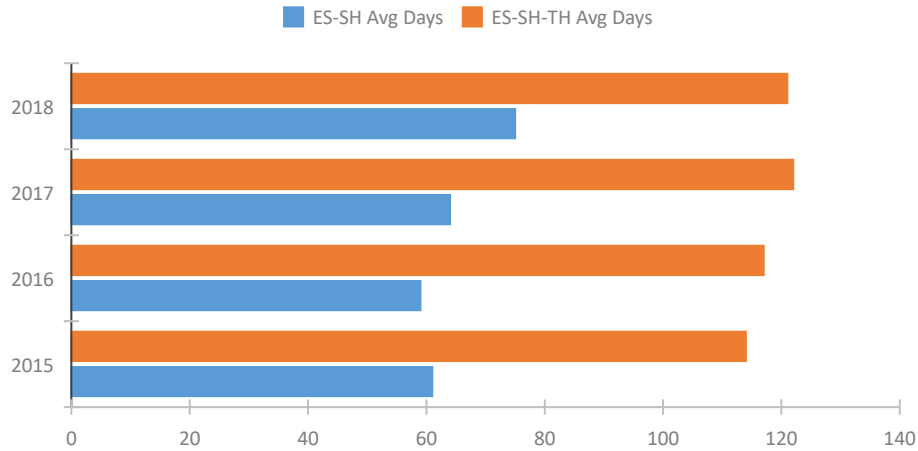


Homeless Population – Point-in-Time (PIT) Count

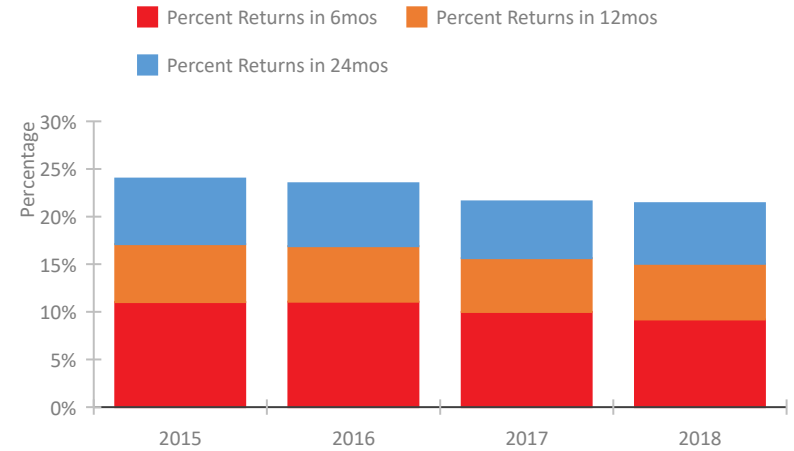


CoC Performance Profile CT-505 Connecticut Balance of State CoC

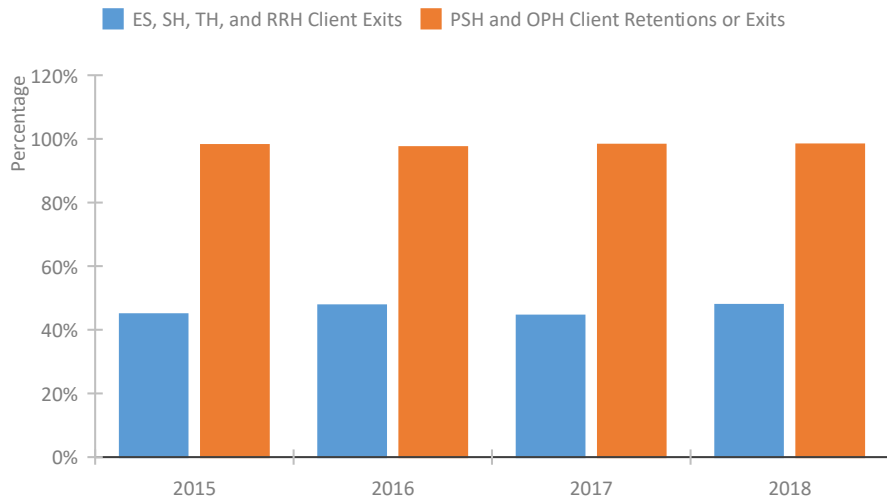
Length of Time Homeless



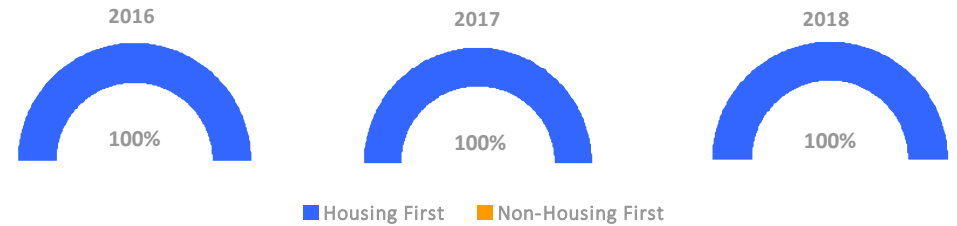
Returns to Homelessness Over Time



Exits to Permanent Housing by Program Type



Proportion of Housing First Projects by Year



Number of Projects by Year

	2016	2017	2018
Housing First Projects	102	101	103
Non-Housing First Projects	0	0	0

Data Summary: CT-505 Connecticut Balance of State CoC

Point-In-Time Count Summary

	2014	2015	2016	2017	2018	2017-18 Change	% Change
Number of Sheltered Persons in Families	723	749	965	828	1,387	559	68%
Number of Unsheltered Persons in Families	56	21	6	4	0	-4	-100%
Number of Sheltered Individuals	1,227	1,179	1,534	1,448	1,349	-99	-7%
Number of Unsheltered Individuals	482	432	511	330	499	169	51%
Total Homeless Persons	2,488	2,381	3,016	2,610	3,235	625	24%
Number of Sheltered Families	253	261	327	279	445	166	59%
Number of Unsheltered Families	22	8	2	1	0	-1	-100%
Number of Total Families	275	269	329	280	445	165	59%
Sheltered Chronically Homeless Individuals	353	146	213	208	168	-40	-19%
Unsheltered Chronically Homeless Individuals	209	218	143	131	94	-37	-28%
Total Chronically Homeless Individuals	562	364	356	339	262	-77	-23%
Sheltered Veterans	137	157	131	131	137	6	5%
Unsheltered Veterans	52	29	32	12	12	0	0%
Total Veterans	189	186	163	143	149	6	4%
Sheltered Unaccompanied Youth (up to 24)	--	41	74	78	87	9	12%
Unsheltered Unaccompanied Youth (up to 24)	--	18	17	45	47	2	4%
Total Unaccompanied Youth (up to 24)	--	59	91	123	134	11	9%

System Performance Measures Summary

	2014	2015	2016	2017	2018	2017-18 Change	% Change
Average Length of Time Homeless (days)	N/A	114	117	122	121	-1	-0.8%
Rate People Return to Homelessness in 6 Months	N/A	11.0%	11.1%	10.0%	9.2%	-0.8%	N/A
Number of People who are Homeless for the First Time	N/A	5966	5485	4460	3889	-571	-12.8%
Rate People Exit from ES, SH, TH, and RRH to PH	N/A	44.9%	47.7%	44.4%	47.8%	3.4%	N/A
Rate People in PSH and OPH Retain or Exit to PH	N/A	98.0%	97.4%	98.2%	98.2%	0.1%	N/A

Housing Inventory Count Summary

	2014	2015	2016	2017	2018	2017-18 Change	% Change
Emergency Shelter (ES)	1,194	1,386	1,744	1,703	2,280	577	34%
Transitional Housing (TH)	621	533	720	636	377	-259	-41%
Permanent Supportive Housing (PSH)	3,278	3,957	5,124	5,201	5,175	-26	0%
Rapid Re-Housing (RRH)	210	273	517	634	696	62	10%

Award Summary

	2014	2015	2016	2017	2018	2017-18 Change	% Change
Continuum of Care (CoC)	\$21,691,415	\$27,081,272	\$34,391,375	\$35,307,559	\$37,553,278	\$2,245,719	6%
Emergency Solutions Grants (ESG)	\$577,014	\$791,049	\$776,782	\$764,173	\$762,791	(\$1,382)	0%
Youth Homelessness Demonstration Program (YHDP)	N/A	N/A	\$6,552,904	--	--	--	--