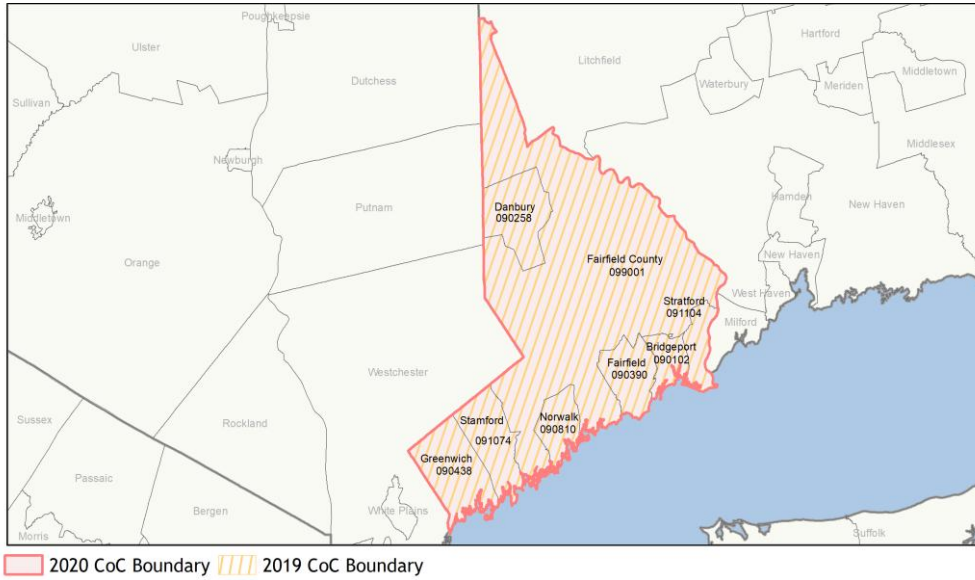
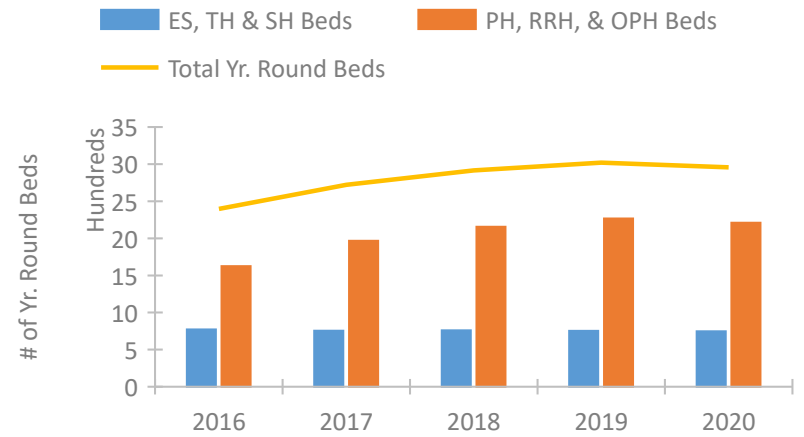


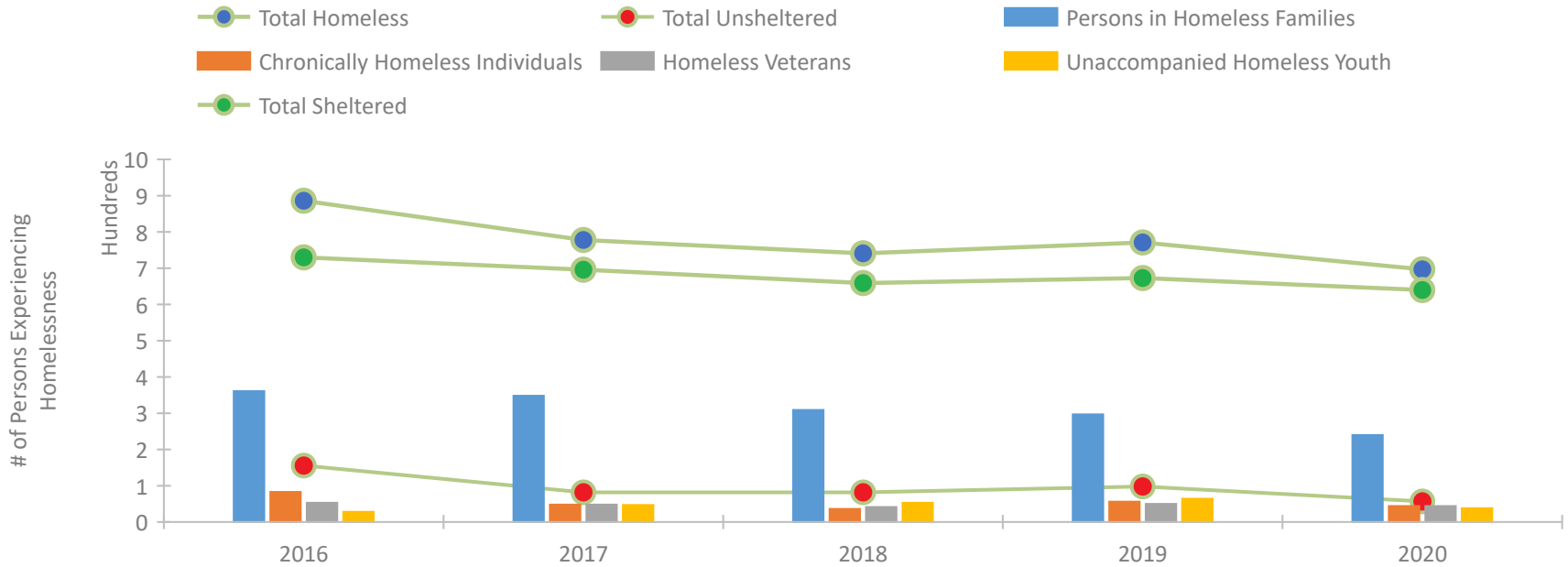
## CoC Performance Profile CT-503 Bridgeport, Stamford, Norwalk, Danbury/Fairfield County CoC



### Housing Inventory Count by Program Type

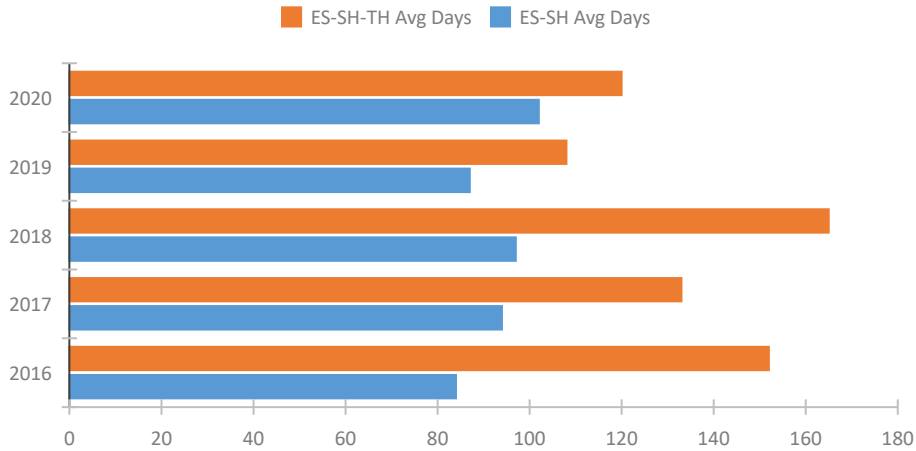


### Homeless Population – Point-in-Time (PIT) Count

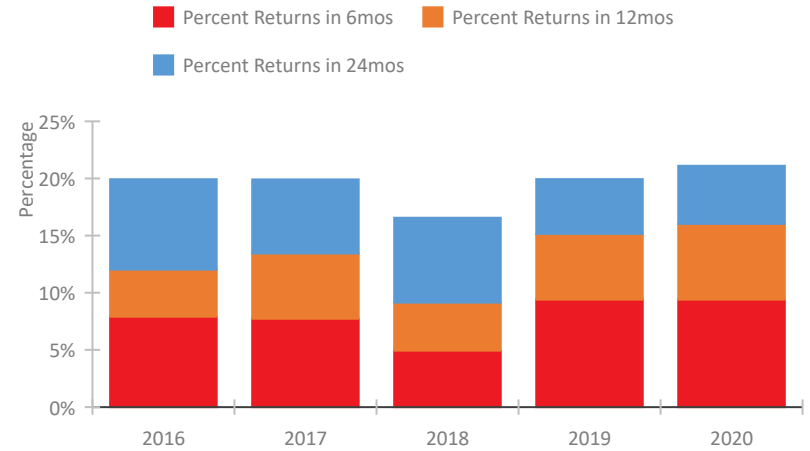


## CoC Performance Profile CT-503 Bridgeport, Stamford, Norwalk, Danbury/Fairfield County CoC

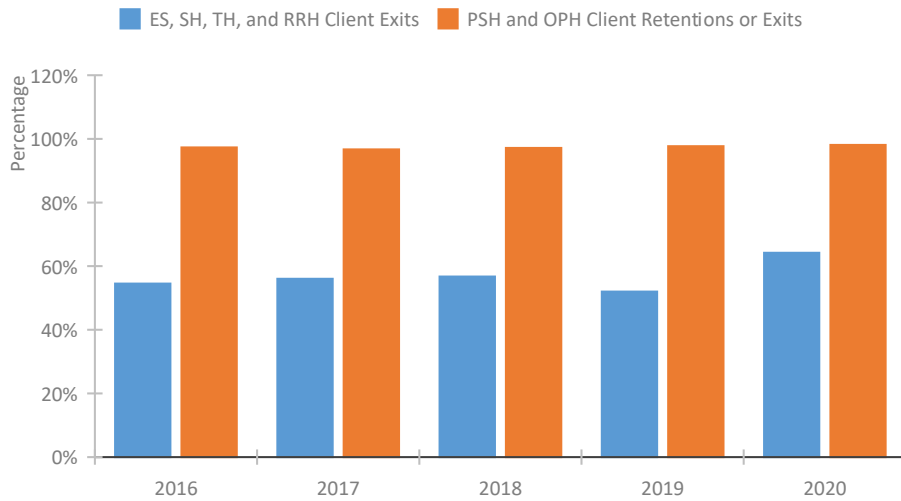
### Length of Time Homeless



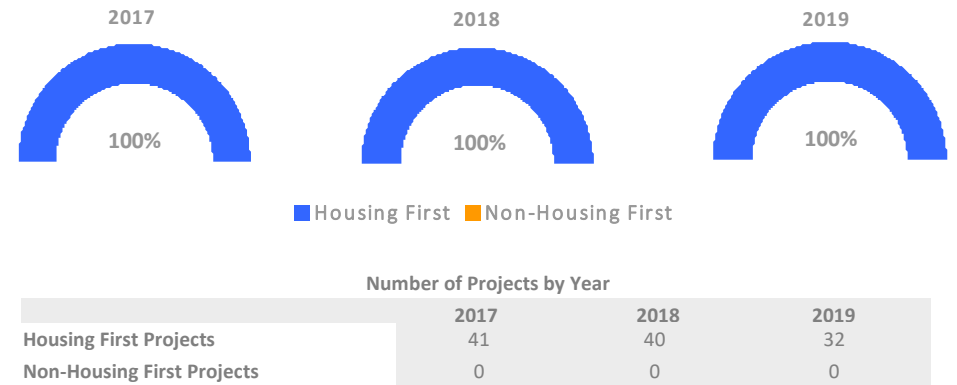
### Returns to Homelessness Over Time



### Exits to Permanent Housing by Program Type



### Proportion of Housing First Projects by Year\*



\*In 2020 HUD awarded renewal projects noncompetitively, therefore no new data was collected and Housing First data remains the same from 2019 to 2020.

**Data Summary: CT-503 Bridgeport, Stamford, Norwalk, Danbury/Fairfield County CoC**

**Point-In-Time Count Summary**

	2016	2017	2018	2019	2020	2019-20 Change	% Change
Number of Sheltered Persons in Families	361	348	309	295	240	-55	-19%
Number of Unsheltered Persons in Families	0	0	0	2	0	-2	-100%
Number of Sheltered Individuals	369	348	350	378	400	22	6%
Number of Unsheltered Individuals	156	82	82	96	57	-39	-41%
<b>Total Homeless Persons</b>	<b>886</b>	<b>778</b>	<b>741</b>	<b>771</b>	<b>697</b>	<b>-74</b>	<b>-10%</b>
Number of Sheltered Families	120	112	108	101	81	-20	-20%
Number of Unsheltered Families	0	0	0	1	0	-1	-100%
<b>Number of Total Families</b>	<b>120</b>	<b>112</b>	<b>108</b>	<b>102</b>	<b>81</b>	<b>-21</b>	<b>-21%</b>
Sheltered Chronically Homeless Individuals	41	32	27	32	30	-2	-6%
Unsheltered Chronically Homeless Individuals	42	16	9	24	14	-10	-42%
<b>Total Chronically Homeless Individuals</b>	<b>83</b>	<b>48</b>	<b>36</b>	<b>56</b>	<b>44</b>	<b>-12</b>	<b>-21%</b>
Sheltered Veterans	42	46	40	49	43	-6	-12%
Unsheltered Veterans	11	2	1	1	1	0	-0%
<b>Total Veterans</b>	<b>53</b>	<b>48</b>	<b>41</b>	<b>50</b>	<b>44</b>	<b>-6</b>	<b>-12%</b>
Sheltered Unaccompanied Youth (up to 24)	23	28	31	28	30	2	7%
Unsheltered Unaccompanied Youth (up to 24)	5	19	22	36	8	-28	-78%
<b>Total Unaccompanied Youth (up to 24)</b>	<b>28</b>	<b>47</b>	<b>53</b>	<b>64</b>	<b>38</b>	<b>-26</b>	<b>-41%</b>

**System Performance Measures Summary**

	2016	2017	2018	2018	2020	2019-20 Change	% Change
Average Length of Time Homeless (days)	152	133	165	108	120	12	11.1%
Rate People Return to Homelessness in 6 Months	7.9%	7.7%	4.9%	9.4%	9.4%	-0%	N/A
Number of People who are Homeless for the First Time	1,350	1,147	1,078	935	661	-274	-29.3%
Rate People Exit from ES, SH, TH, and RRH to PH	54.5%	56.0%	56.7%	52.0%	64.2%	12.2%	N/A
Rate People in PSH and OPH Retain or Exit to PH	97.3%	96.7%	97.1%	97.7%	98.1%	0.4%	N/A

**Housing Inventory Count Summary**

	2016	2017	2018	2019	2020	2019-20 Change	% Change
Emergency Shelter (ES)	532	545	555	558	560	2	0%
Transitional Housing (TH)	240	210	205	195	187	-8	-4%
Permanent Supportive Housing (PSH)	1,503	1,781	1,884	2,068	1,977	-91	-4%
Rapid Re-Housing (RRH)	122	186	272	200	233	33	16%

**Award Summary**

	2016	2017	2018	2019	2020	2019-20 Change	% Change
<b>Continuum of Care (CoC)</b>	\$10,192,385	\$10,561,977	\$11,467,362	\$13,660,263	\$14,548,836	\$888,573	7%
<b>Emergency Solutions Grants (ESG)</b>	\$248,572	\$248,389	\$258,173	\$272,282	\$284,467	\$12,185	4%
<b>Youth Homelessness Demonstration Program (YHDP)</b>	--	--	\$3,013,674	--	--	--	--