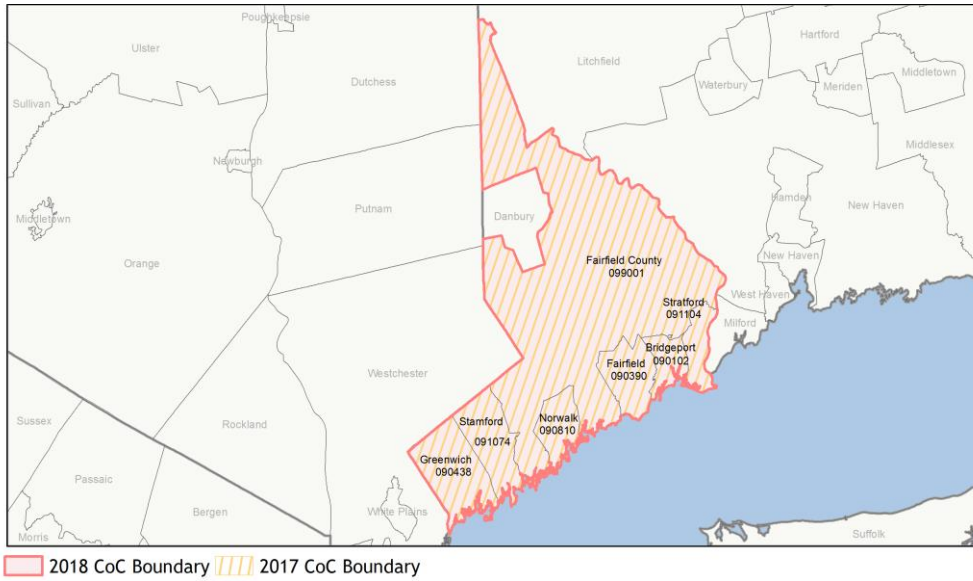
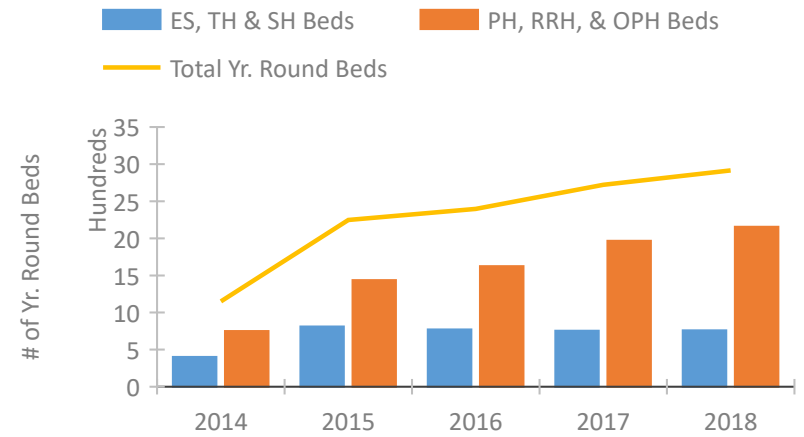


CoC Performance Profile CT-503

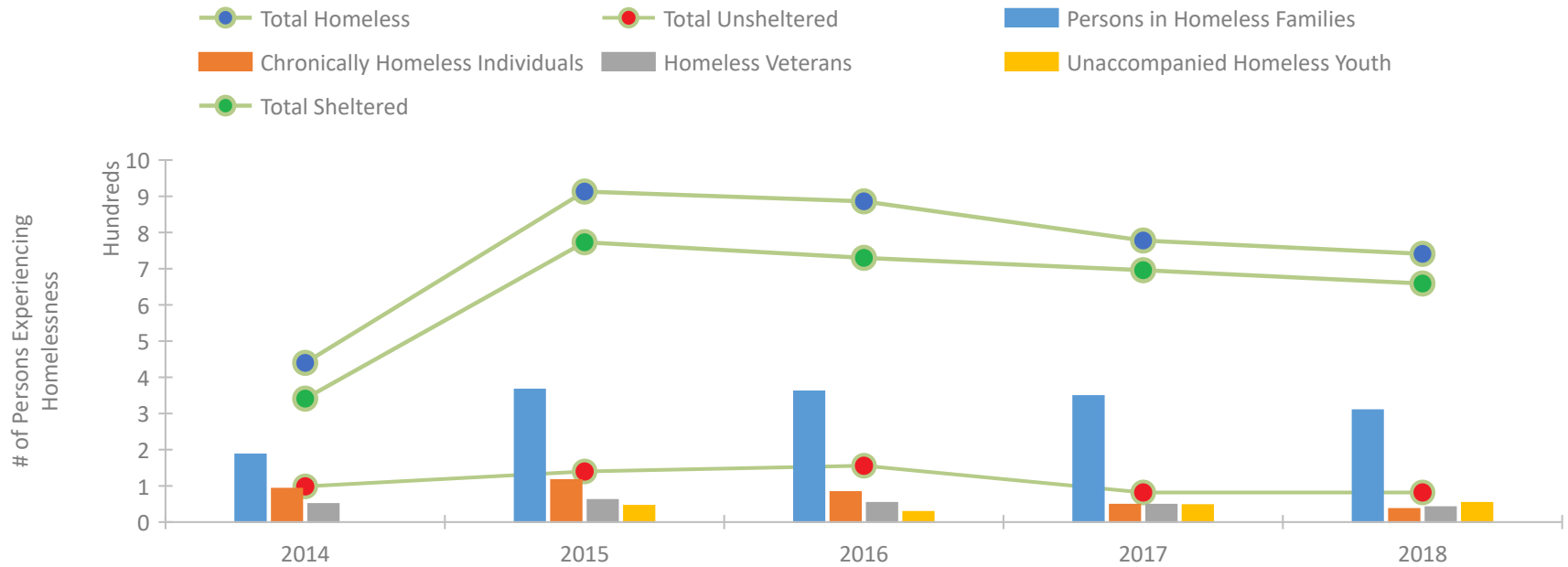
Bridgeport, Stamford, Norwalk/Fairfield County CoC



Housing Inventory Count by Program Type



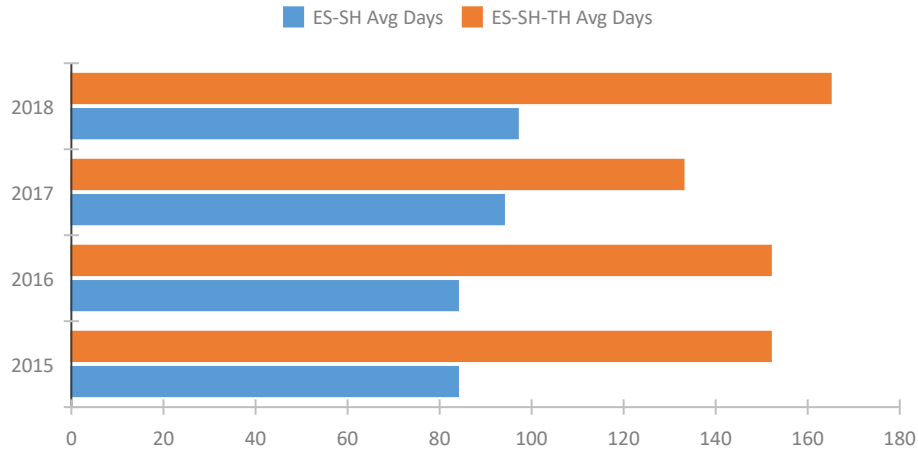
Homeless Population – Point-in-Time (PIT) Count



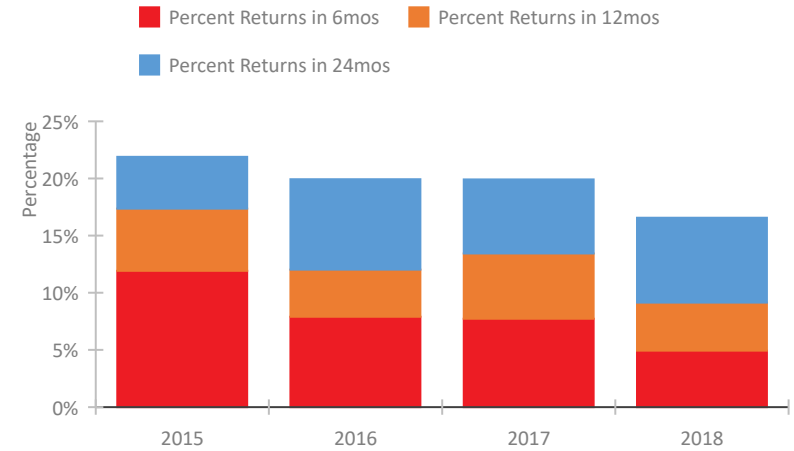
CoC Performance Profile CT-503

Bridgeport, Stamford, Norwalk/Fairfield County CoC

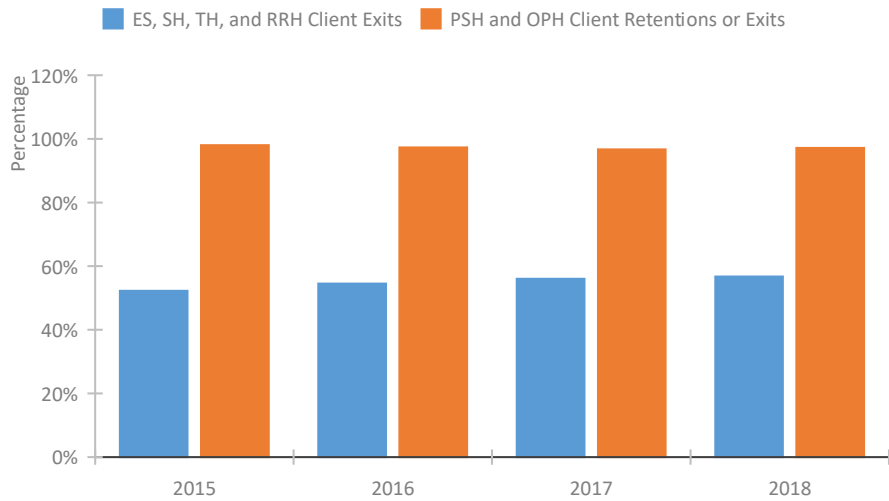
Length of Time Homeless



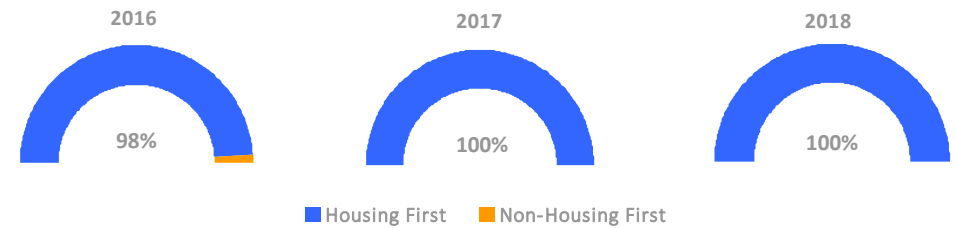
Returns to Homelessness Over Time



Exits to Permanent Housing by Program Type



Proportion of Housing First Projects by Year



Number of Projects by Year

	2016	2017	2018
Housing First Projects	40	41	40
Non-Housing First Projects	1	0	0

Data Summary: CT-503 Bridgeport, Stamford, Norwalk/Fairfield County CoC

Point-In-Time Count Summary

	2014	2015	2016	2017	2018	2017-18 Change	% Change
Number of Sheltered Persons in Families	173	356	361	348	309	-39	-11%
Number of Unsheltered Persons in Families	14	10	0	0	0	0	--
Number of Sheltered Individuals	168	417	369	348	350	2	1%
Number of Unsheltered Individuals	85	130	156	82	82	0	0%
Total Homeless Persons	440	913	886	778	741	-37	-5%
Number of Sheltered Families	54	116	120	112	108	-4	-4%
Number of Unsheltered Families	6	3	0	0	0	0	--
Number of Total Families	60	119	120	112	108	-4	-4%
Sheltered Chronically Homeless Individuals	42	50	41	32	27	-5	-16%
Unsheltered Chronically Homeless Individuals	50	66	42	16	9	-7	-44%
Total Chronically Homeless Individuals	92	116	83	48	36	-12	-25%
Sheltered Veterans	42	52	42	46	40	-6	-13%
Unsheltered Veterans	8	9	11	2	1	-1	-50%
Total Veterans	50	61	53	48	41	-7	-15%
Sheltered Unaccompanied Youth (up to 24)	--	34	23	28	31	3	11%
Unsheltered Unaccompanied Youth (up to 24)	--	11	5	19	22	3	16%
Total Unaccompanied Youth (up to 24)	--	45	28	47	53	6	13%

System Performance Measures Summary

	2014	2015	2016	2017	2018	2017-18 Change	% Change
Average Length of Time Homeless (days)	N/A	152	152	133	165	32	24.1%
Rate People Return to Homelessness in 6 Months	N/A	11.9%	7.9%	7.7%	4.9%	-2.8%	N/A
Number of People who are Homeless for the First Time	N/A	1241	1350	1147	1078	-69	-6%
Rate People Exit from ES, SH, TH, and RRH to PH	N/A	52.2%	54.5%	56.0%	56.7%	0.7%	N/A
Rate People in PSH and OPH Retain or Exit to PH	N/A	98.0%	97.3%	96.7%	97.1%	0.5%	N/A

Housing Inventory Count Summary

	2014	2015	2016	2017	2018	2017-18 Change	% Change
Emergency Shelter (ES)	233	557	532	545	555	10	2%
Transitional Housing (TH)	168	255	240	210	205	-5	-2%
Permanent Supportive Housing (PSH)	739	1,315	1,503	1,781	1,884	103	6%
Rapid Re-Housing (RRH)	11	13	122	186	272	86	46%

Award Summary

	2014	2015	2016	2017	2018	2017-18 Change	% Change
Continuum of Care (CoC)	\$5,770,860	\$10,169,085	\$10,192,385	\$10,561,977	\$11,467,362	\$905,385	9%
Emergency Solutions Grants (ESG)	\$241,205	\$251,907	\$248,572	\$248,389	\$258,173	\$9,784	4%
Youth Homelessness Demonstration Program (YHDP)	N/A	N/A	--	--	\$3,013,674	--	--