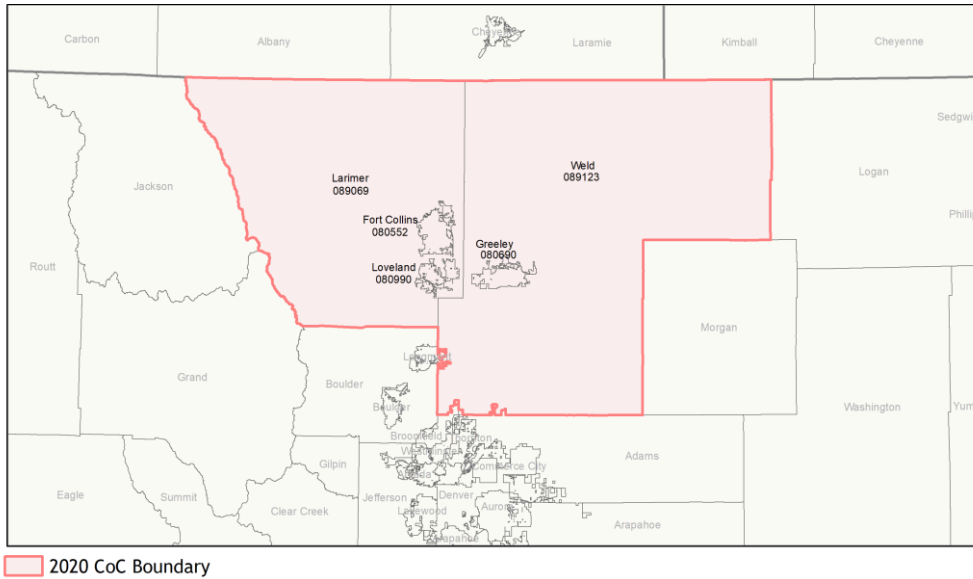
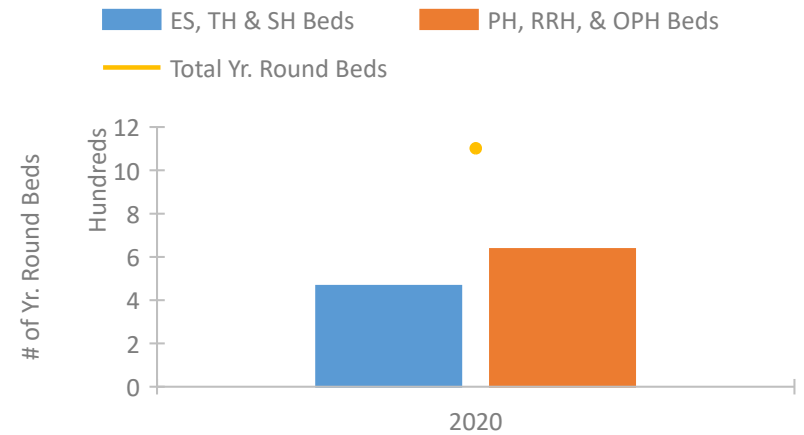


# CoC Performance Profile CO-505

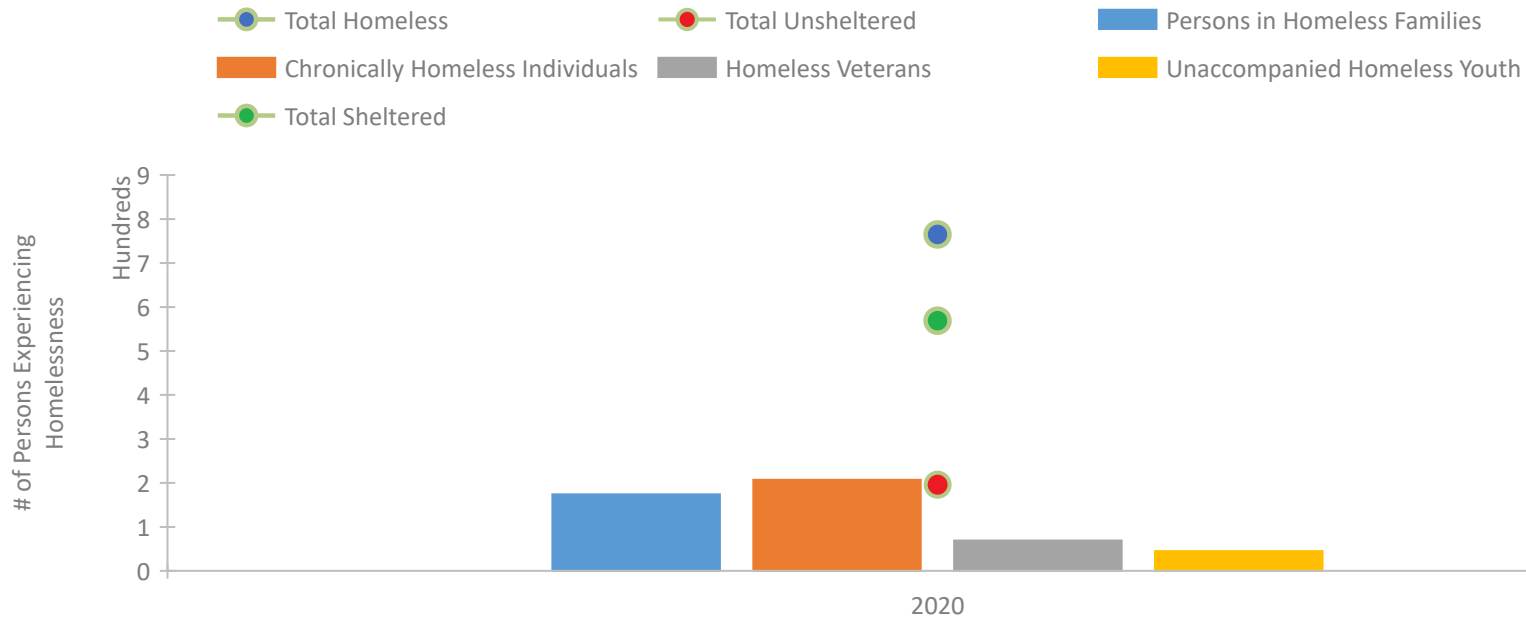
## Fort Collins, Greeley, Loveland/Larimer, Weld Counties CoC



### Housing Inventory Count by Program Type



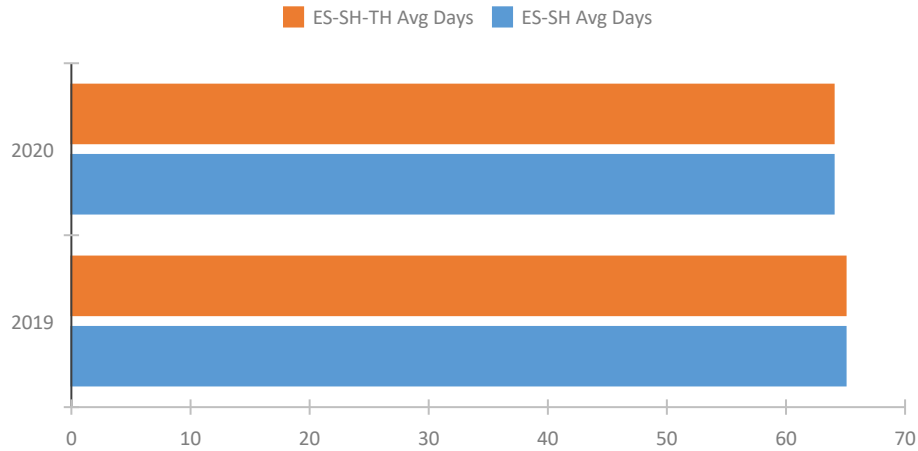
### Homeless Population – Point-in-Time (PIT) Count



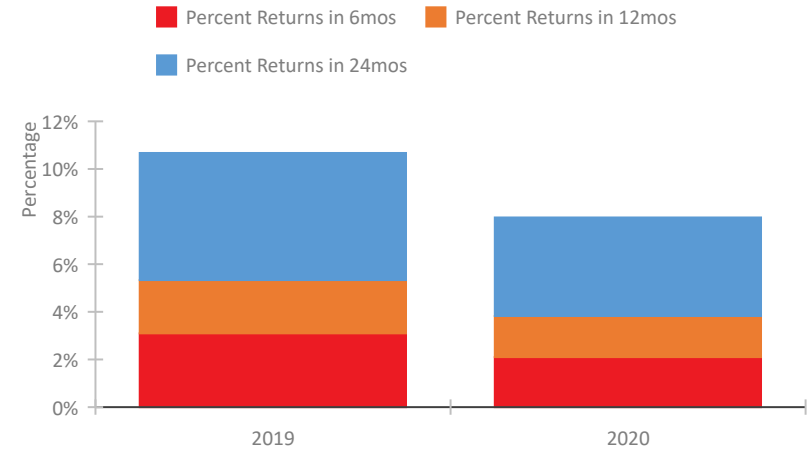
## CoC Performance Profile CO-505

### Fort Collins, Greeley, Loveland/Larimer, Weld Counties CoC

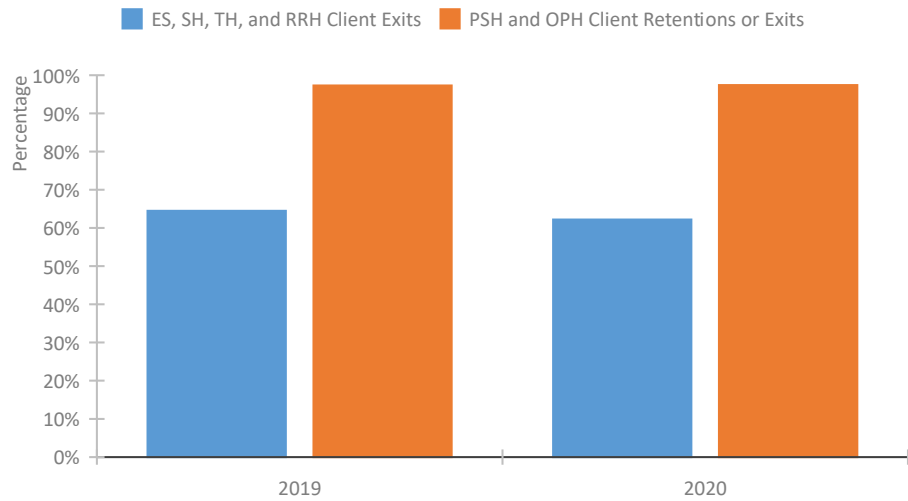
Length of Time Homeless



Returns to Homelessness Over Time



Exits to Permanent Housing by Program Type



Proportion of Housing First Projects by Year\*

2017 2018 2019

\*In 2020 HUD awarded renewal projects noncompetitively, therefore no new data was collected and Housing First data remains the same from 2019 to 2020.

## Data Summary: CO-505 Fort Collins, Greeley, Loveland/Larimer, Weld Counties CoC

### Point-In-Time Count Summary

	2016	2017	2018	2019	2020	2019-20 Change	% Change
Number of Sheltered Persons in Families	--	--	--	--	174	--	--
Number of Unsheltered Persons in Families	--	--	--	--	0	--	--
Number of Sheltered Individuals	--	--	--	--	395	--	--
Number of Unsheltered Individuals	--	--	--	--	196	--	--
<b>Total Homeless Persons</b>	--	--	--	--	<b>765</b>	--	--
Number of Sheltered Families	--	--	--	--	45	--	--
Number of Unsheltered Families	--	--	--	--	0	--	--
<b>Number of Total Families</b>	--	--	--	--	<b>45</b>	--	--
Sheltered Chronically Homeless Individuals	--	--	--	--	101	--	--
Unsheltered Chronically Homeless Individuals	--	--	--	--	106	--	--
<b>Total Chronically Homeless Individuals</b>	--	--	--	--	<b>207</b>	--	--
Sheltered Veterans	--	--	--	--	44	--	--
Unsheltered Veterans	--	--	--	--	25	--	--
<b>Total Veterans</b>	--	--	--	--	<b>69</b>	--	--
Sheltered Unaccompanied Youth (up to 24)	--	--	--	--	20	--	--
Unsheltered Unaccompanied Youth (up to 24)	--	--	--	--	25	--	--
<b>Total Unaccompanied Youth (up to 24)</b>	--	--	--	--	<b>45</b>	--	--

### System Performance Measures Summary

	2016	2017	2018	2018	2020	2019-20 Change	% Change
Average Length of Time Homeless (days)	--	--	--	65	64	-1	-1.5%
Rate People Return to Homelessness in 6 Months	--	--	--	3.1%	2.1%	-1%	N/A
Number of People who are Homeless for the First Time	--	--	--	979	434	-545	-55.7%
Rate People Exit from ES, SH, TH, and RRH to PH	--	--	--	64.5%	62.2%	-2.3%	N/A
Rate People in PSH and OPH Retain or Exit to PH	--	--	--	97.3%	97.4%	0.1%	N/A

### Housing Inventory Count Summary

	2016	2017	2018	2019	2020	2019-20 Change	% Change
Emergency Shelter (ES)	--	--	--	--	366	--	--
Transitional Housing (TH)	--	--	--	--	100	--	--
Permanent Supportive Housing (PSH)	--	--	--	--	412	--	--
Rapid Re-Housing (RRH)	--	--	--	--	197	--	--
Other Permanent Housing (OPH)	--	--	--	--	27	--	--

### Award Summary

	2016	2017	2018	2019	2020	2019-20 Change	% Change
<b>Continuum of Care (CoC)</b>	--	--	--	--	\$1,220,676	--	--
<b>ESG (CO state recipient - no direct funding)</b>	\$1,815,205	\$2,398,397	\$1,965,723	\$2,039,357	\$2,135,314	\$95,957	5%