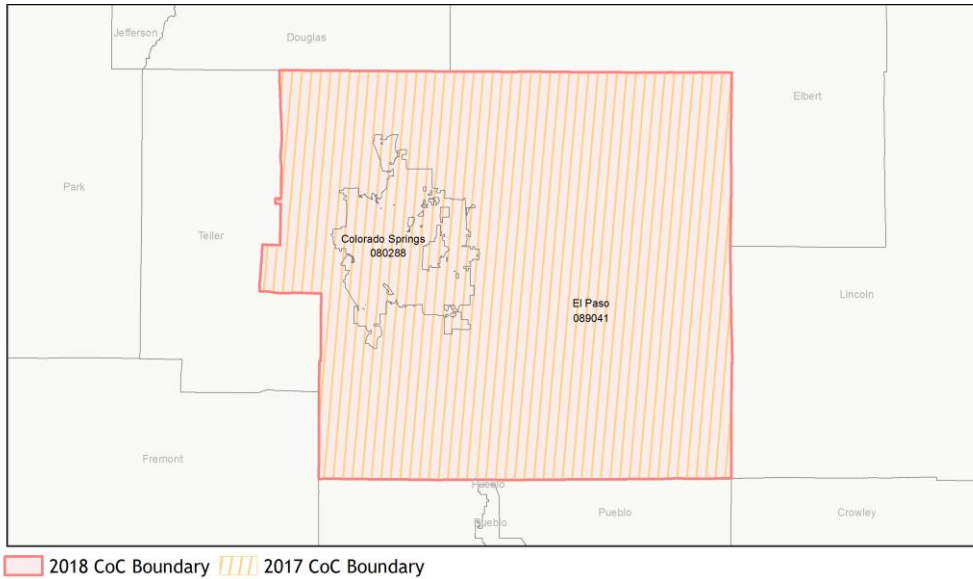
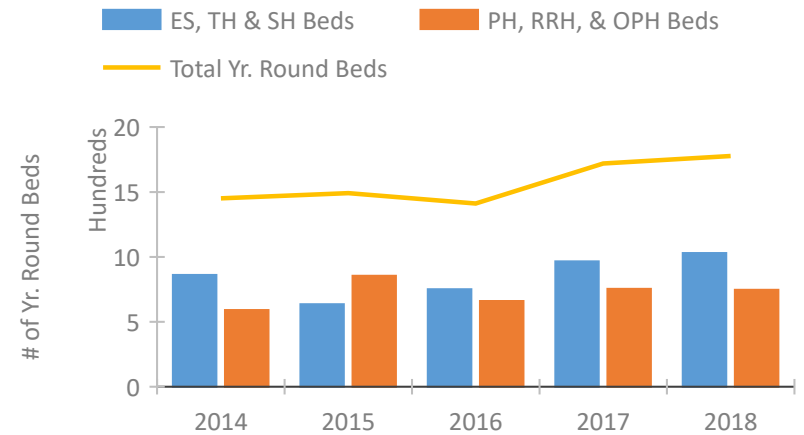


CoC Performance Profile CO-504

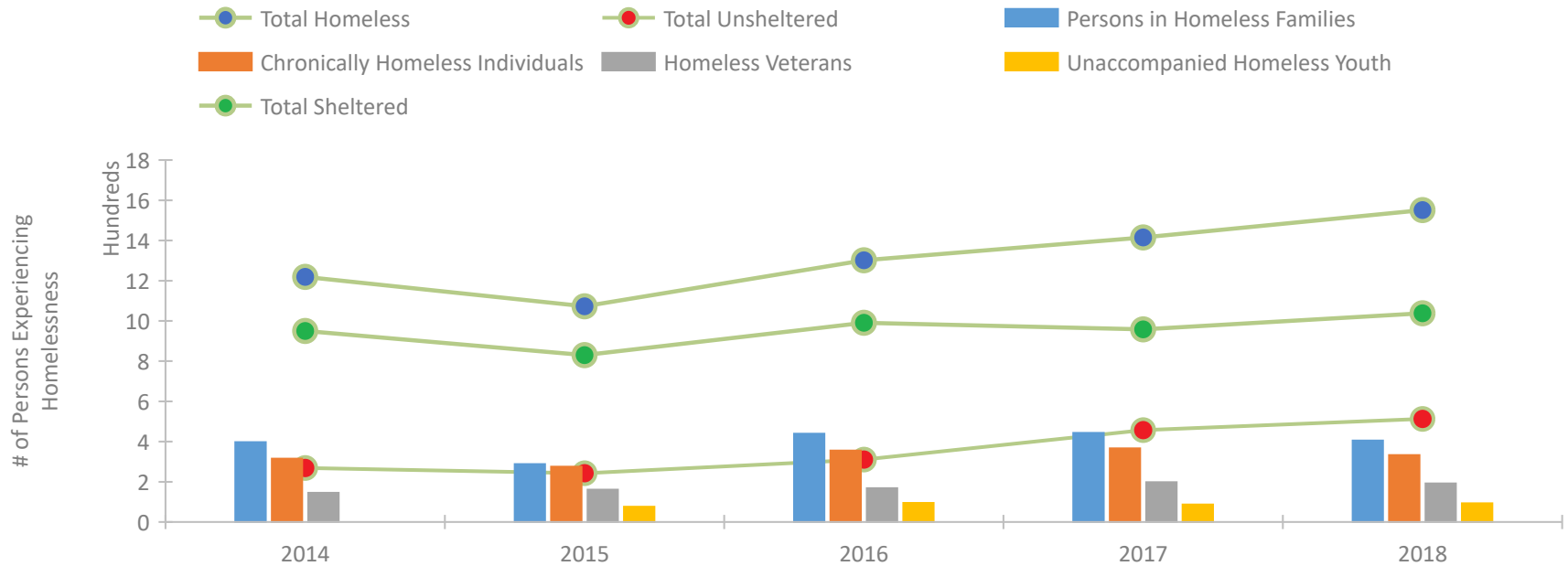
Colorado Springs/El Paso County CoC



Housing Inventory Count by Program Type

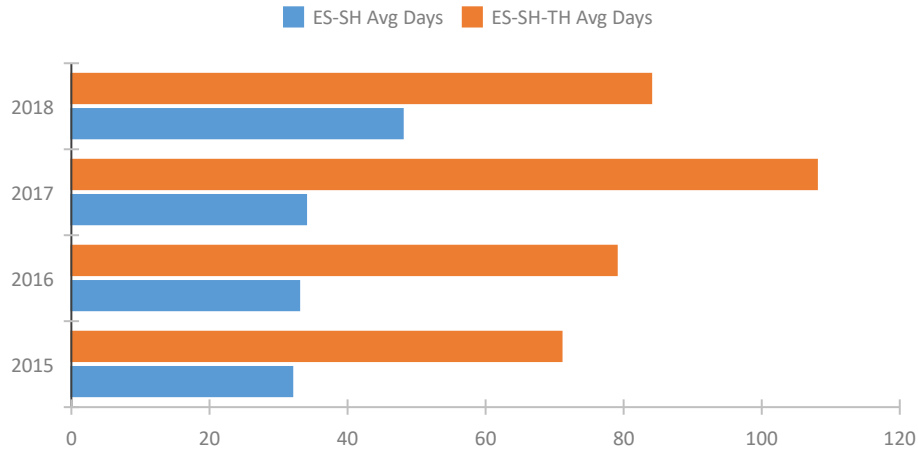


Homeless Population – Point-in-Time (PIT) Count

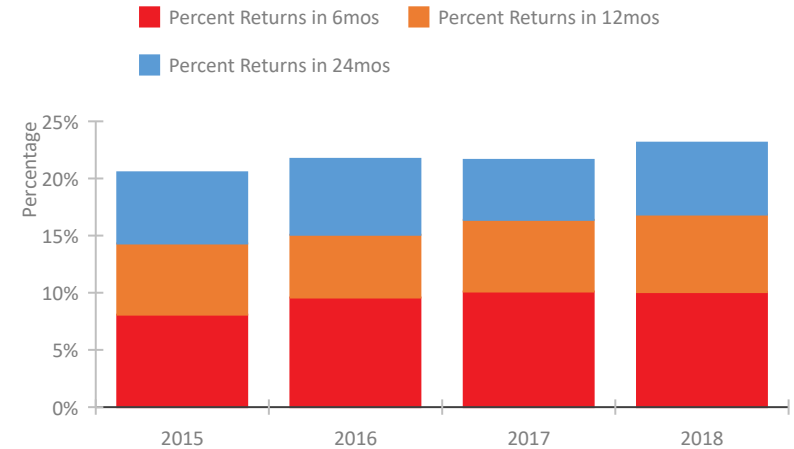


CoC Performance Profile CO-504 Colorado Springs/El Paso County CoC

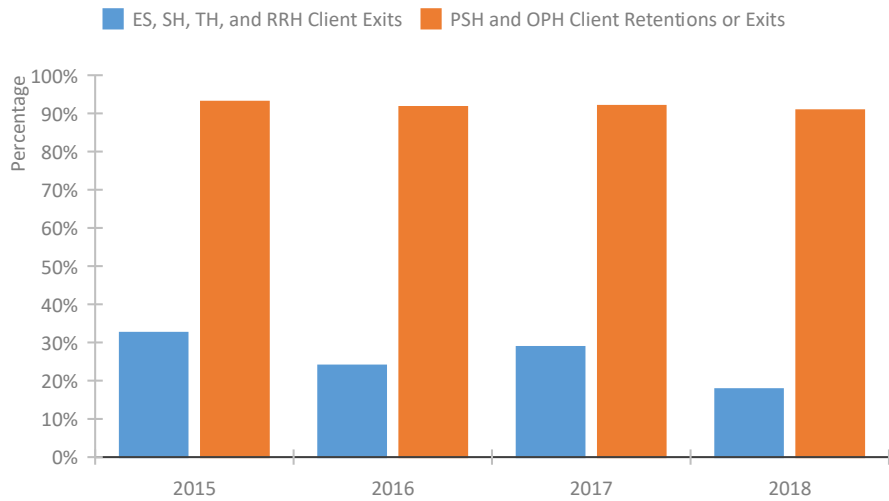
Length of Time Homeless



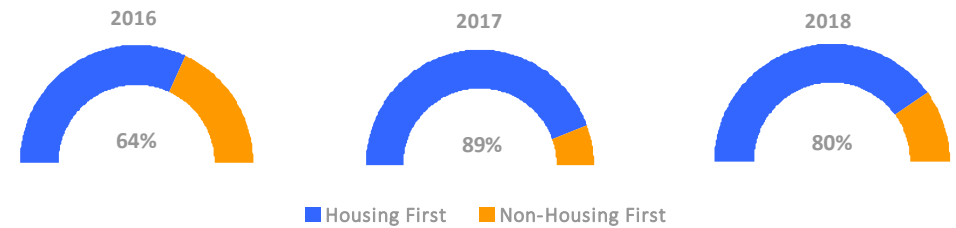
Returns to Homelessness Over Time



Exits to Permanent Housing by Program Type



Proportion of Housing First Projects by Year



Number of Projects by Year

	2016	2017	2018
Housing First Projects	14	16	12
Non-Housing First Projects	8	2	3

Data Summary: CO-504 Colorado Springs/El Paso County CoC

Point-In-Time Count Summary

	2014	2015	2016	2017	2018	2017-18 Change	% Change
Number of Sheltered Persons in Families	389	285	420	408	382	-26	-6%
Number of Unsheltered Persons in Families	8	3	19	35	23	-12	-34%
Number of Sheltered Individuals	561	545	571	550	656	106	19%
Number of Unsheltered Individuals	261	240	292	422	490	68	16%
Total Homeless Persons	1,219	1,073	1,302	1,415	1,551	136	10%
Number of Sheltered Families	109	91	117	117	122	5	4%
Number of Unsheltered Families	2	1	5	8	6	-2	-25%
Number of Total Families	111	92	122	125	128	3	2%
Sheltered Chronically Homeless Individuals	149	126	207	117	88	-29	-25%
Unsheltered Chronically Homeless Individuals	166	149	148	249	245	-4	-2%
Total Chronically Homeless Individuals	315	275	355	366	333	-33	-9%
Sheltered Veterans	99	107	124	126	111	-15	-12%
Unsheltered Veterans	46	54	44	72	81	9	12%
Total Veterans	145	161	168	198	192	-6	-3%
Sheltered Unaccompanied Youth (up to 24)	--	54	62	44	52	8	18%
Unsheltered Unaccompanied Youth (up to 24)	--	22	33	43	41	-2	-5%
Total Unaccompanied Youth (up to 24)	--	76	95	87	93	6	7%

System Performance Measures Summary

	2014	2015	2016	2017	2018	2017-18 Change	% Change
Average Length of Time Homeless (days)	N/A	71	79	108	84	-24	-22.2%
Rate People Return to Homelessness in 6 Months	N/A	8.1%	9.6%	10.1%	10.1%	-0.1%	N/A
Number of People who are Homeless for the First Time	N/A	2906	3624	4317	3636	-681	-15.8%
Rate People Exit from ES, SH, TH, and RRH to PH	N/A	32.5%	24.0%	28.8%	17.8%	-11.1%	N/A
Rate People in PSH and OPH Retain or Exit to PH	N/A	93.1%	91.7%	92.0%	90.8%	-1.2%	N/A

Housing Inventory Count Summary

	2014	2015	2016	2017	2018	2017-18 Change	% Change
Emergency Shelter (ES)	298	288	298	520	592	72	14%
Transitional Housing (TH)	563	348	453	446	438	-8	-2%
Permanent Supportive Housing (PSH)	419	508	582	606	610	4	1%
Rapid Re-Housing (RRH)	171	347	78	118	106	-12	-10%
Other Permanent Housing (OPH)	--	--	--	30	31	1	3%

Award Summary

	2014	2015	2016	2017	2018	2017-18 Change	% Change
Continuum of Care (CoC)	\$2,233,091	\$2,452,453	\$2,443,940	\$2,404,868	\$2,407,701	\$2,833	0%
Emergency Solutions Grants (ESG)	\$203,084	\$228,195	\$235,877	\$238,307	\$243,746	\$5,439	2%