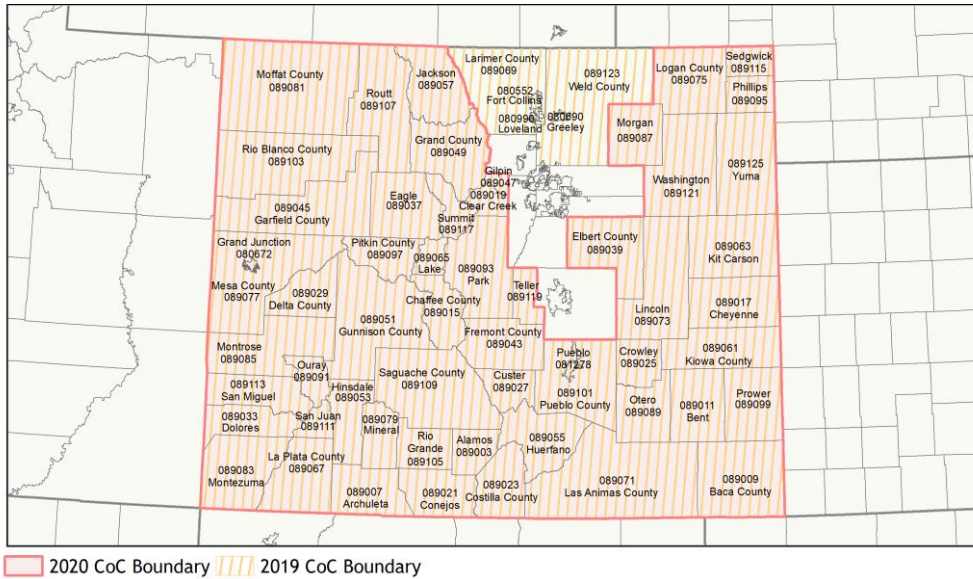
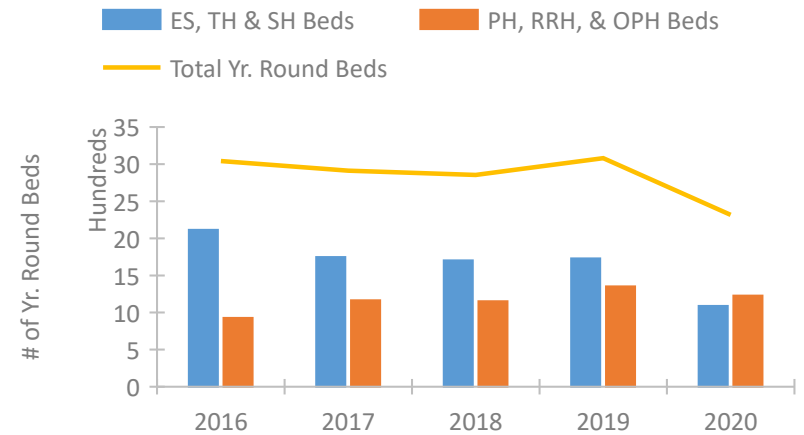


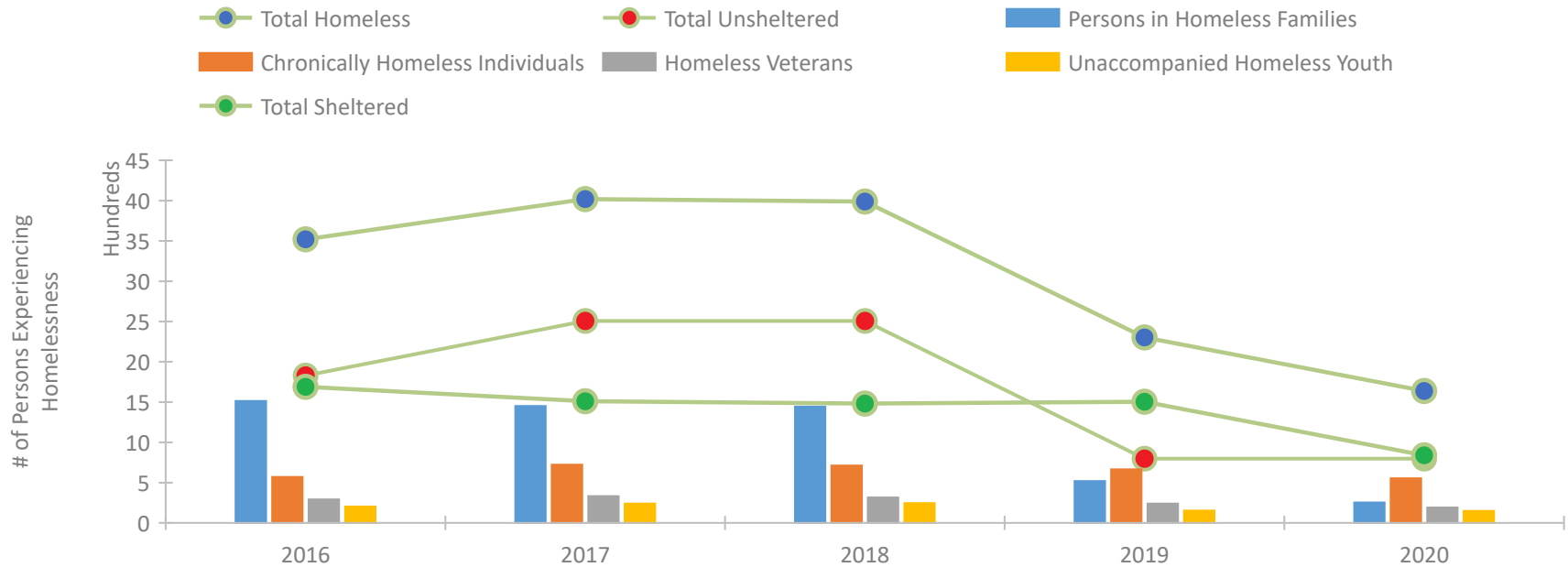
## CoC Performance Profile CO-500 Colorado Balance of State CoC



### Housing Inventory Count by Program Type

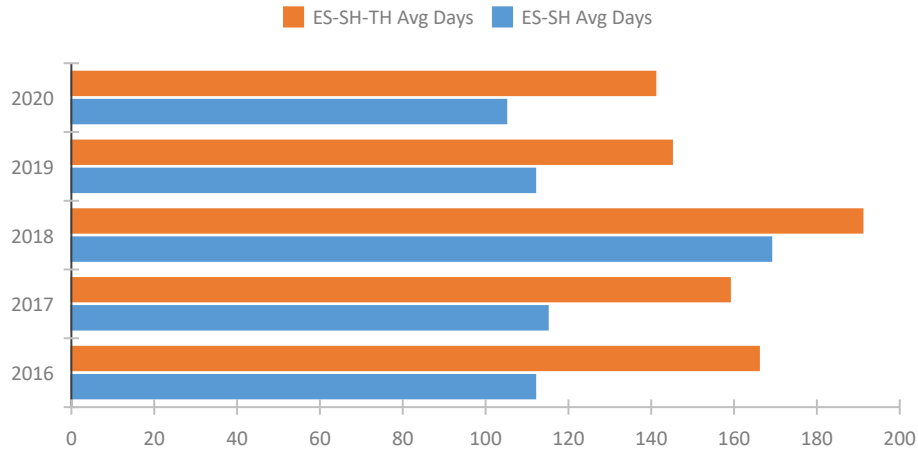


### Homeless Population – Point-in-Time (PIT) Count

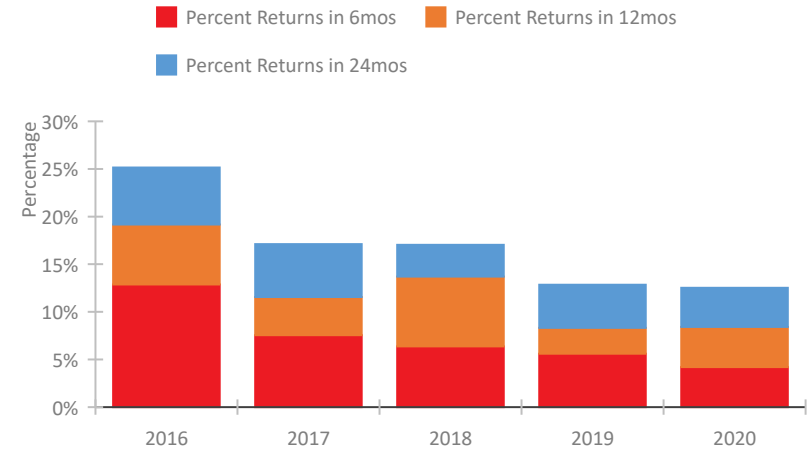


## CoC Performance Profile CO-500 Colorado Balance of State CoC

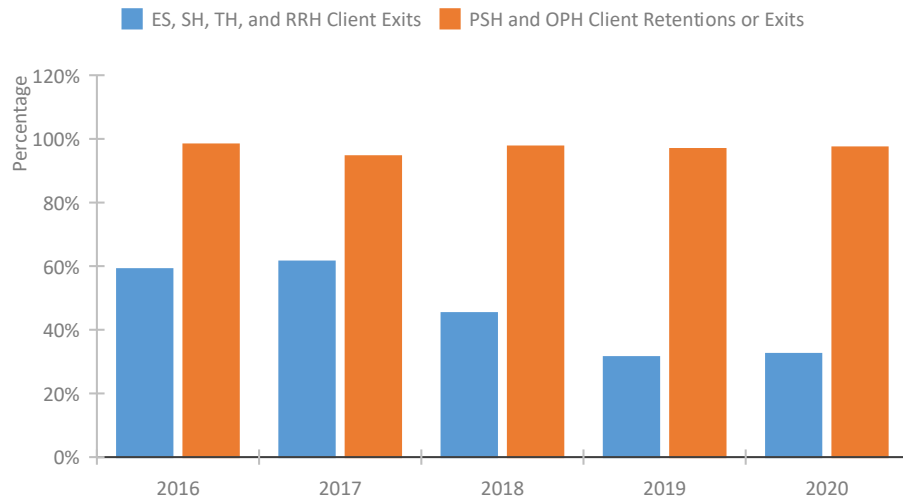
### Length of Time Homeless



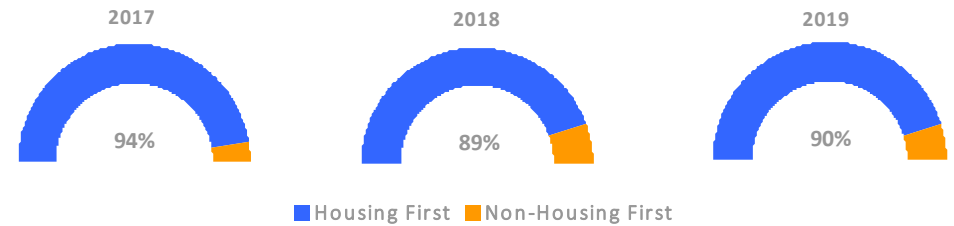
### Returns to Homelessness Over Time



### Exits to Permanent Housing by Program Type



### Proportion of Housing First Projects by Year\*



Number of Projects by Year			
	2017	2018	2019
Housing First Projects	17	17	19
Non-Housing First Projects	1	2	2

\*In 2020 HUD awarded renewal projects noncompetitively, therefore no new data was collected and Housing First data remains the same from 2019 to 2020.

## Data Summary: CO-500 Colorado Balance of State CoC

### Point-In-Time Count Summary

	2016	2017	2018	2019	2020	2019-20 Change	% Change
Number of Sheltered Persons in Families	769	543	535	419	153	-266	-63%
Number of Unsheltered Persons in Families	745	908	908	100	100	0	-0%
Number of Sheltered Individuals	920	968	946	1,085	687	-398	-37%
Number of Unsheltered Individuals	1,086	1,600	1,600	698	698	0	-0%
<b>Total Homeless Persons</b>	<b>3,520</b>	<b>4,019</b>	<b>3,989</b>	<b>2,302</b>	<b>1,638</b>	<b>-664</b>	<b>-29%</b>
Number of Sheltered Families	238	162	163	125	45	-80	-64%
Number of Unsheltered Families	213	267	267	28	28	0	-0%
<b>Number of Total Families</b>	<b>451</b>	<b>429</b>	<b>430</b>	<b>153</b>	<b>73</b>	<b>-80</b>	<b>-52%</b>
Sheltered Chronically Homeless Individuals	167	210	200	266	155	-111	-42%
Unsheltered Chronically Homeless Individuals	404	512	512	399	399	0	-0%
<b>Total Chronically Homeless Individuals</b>	<b>571</b>	<b>722</b>	<b>712</b>	<b>665</b>	<b>554</b>	<b>-111</b>	<b>-17%</b>
Sheltered Veterans	133	141	124	131	82	-49	-37%
Unsheltered Veterans	158	191	191	109	109	0	-0%
<b>Total Veterans</b>	<b>291</b>	<b>332</b>	<b>315</b>	<b>240</b>	<b>191</b>	<b>-49</b>	<b>-20%</b>
Sheltered Unaccompanied Youth (up to 24)	75	75	81	69	64	-5	-7%
Unsheltered Unaccompanied Youth (up to 24)	129	165	165	85	85	0	-0%
<b>Total Unaccompanied Youth (up to 24)</b>	<b>204</b>	<b>240</b>	<b>246</b>	<b>154</b>	<b>149</b>	<b>-5</b>	<b>-3%</b>

### System Performance Measures Summary

	2016	2017	2018	2018	2020	2019-20 Change	% Change
Average Length of Time Homeless (days)	166	159	191	145	141	-4	-2.8%
Rate People Return to Homelessness in 6 Months	12.9%	7.6%	6.4%	5.6%	4.2%	-1.4%	N/A
Number of People who are Homeless for the First Time	2,690	3,468	2,811	3,598	2,081	-1,517	-42.2%
Rate People Exit from ES, SH, TH, and RRH to PH	59.1%	61.5%	45.2%	31.4%	32.4%	1%	N/A
Rate People in PSH and OPH Retain or Exit to PH	98.3%	94.5%	97.6%	96.8%	97.3%	0.5%	N/A

### Housing Inventory Count Summary

	2016	2017	2018	2019	2020	2019-20 Change	% Change
Emergency Shelter (ES)	1,013	1,033	980	1,001	647	-354	-35%
Transitional Housing (TH)	1,102	715	723	729	442	-287	-39%
Permanent Supportive Housing (PSH)	809	850	919	1,069	851	-218	-20%
Rapid Re-Housing (RRH)	118	284	206	255	377	122	48%

### Award Summary

	2016	2017	2018	2019	2020	2019-20 Change	% Change
<b>Continuum of Care (CoC)</b>	\$2,870,432	\$2,908,936	\$3,079,312	\$3,222,996	\$2,230,884	(\$992,112)	-31%
<b>ESG (CO state recipient - no direct funding)</b>	\$1,815,205	\$2,398,397	\$1,965,723	\$2,039,357	\$2,135,314	\$95,957	5%