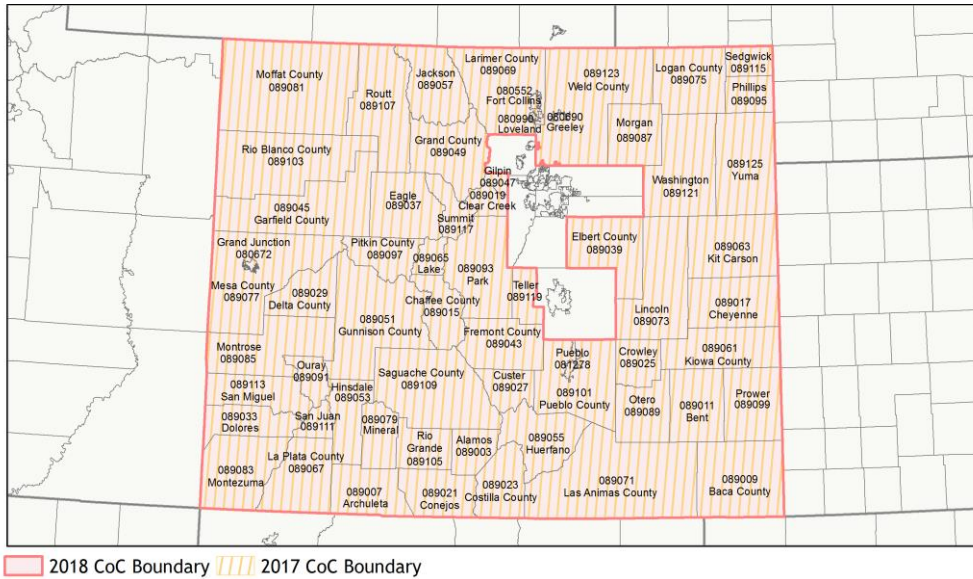
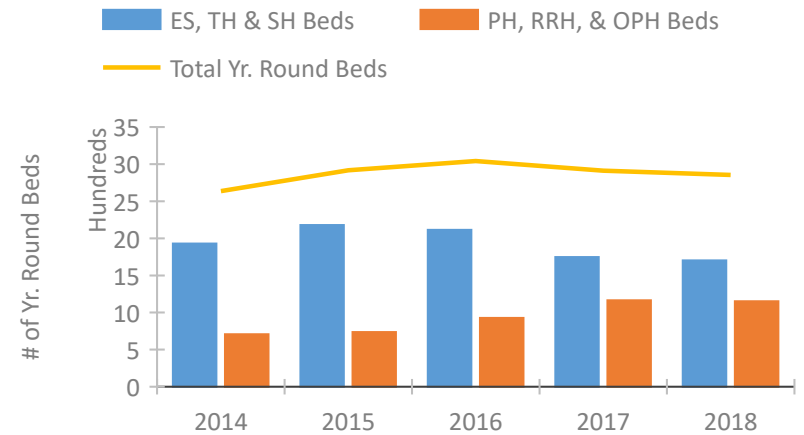


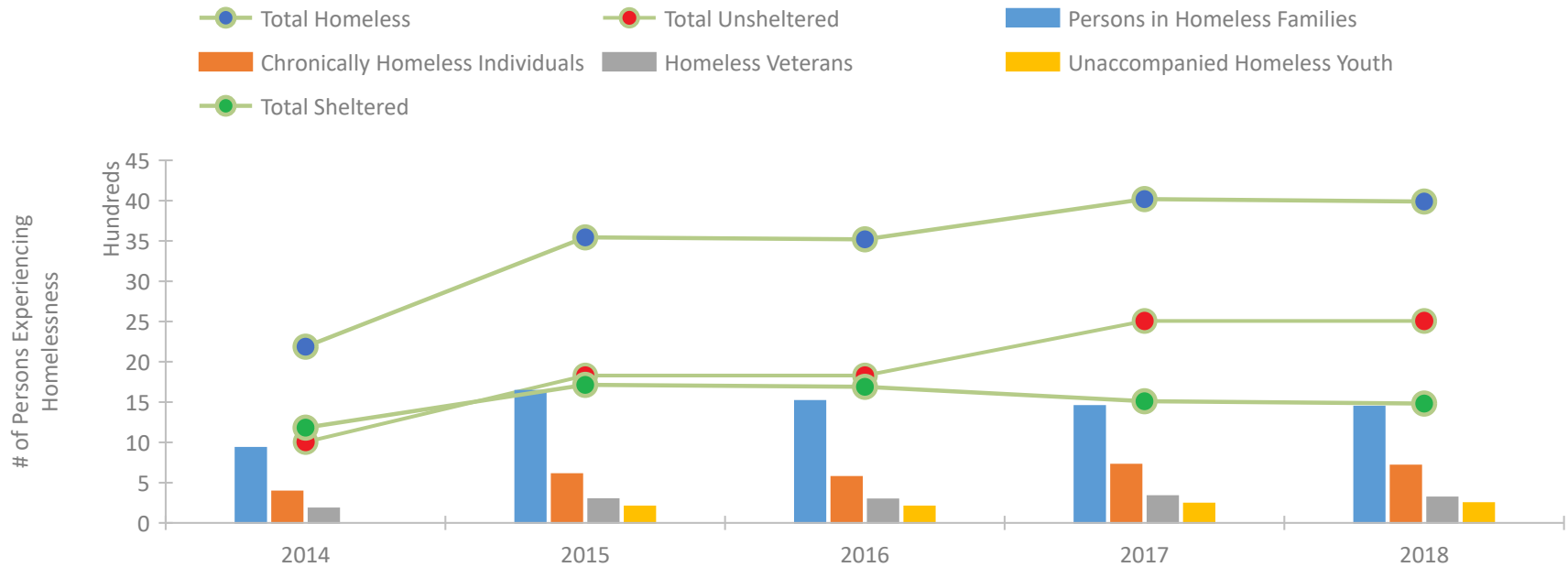
CoC Performance Profile CO-500 Colorado Balance of State CoC



Housing Inventory Count by Program Type

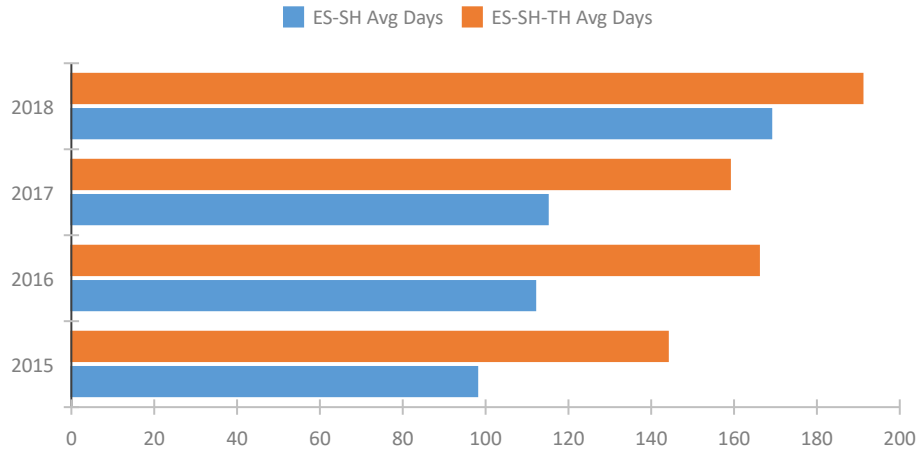


Homeless Population – Point-in-Time (PIT) Count

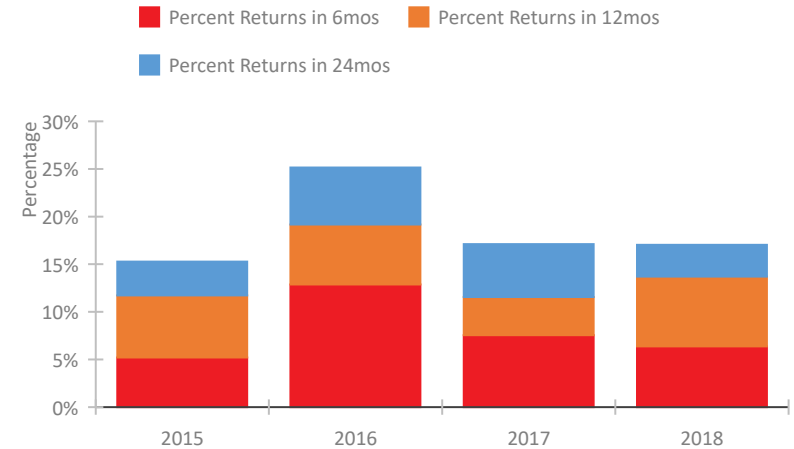


CoC Performance Profile CO-500 Colorado Balance of State CoC

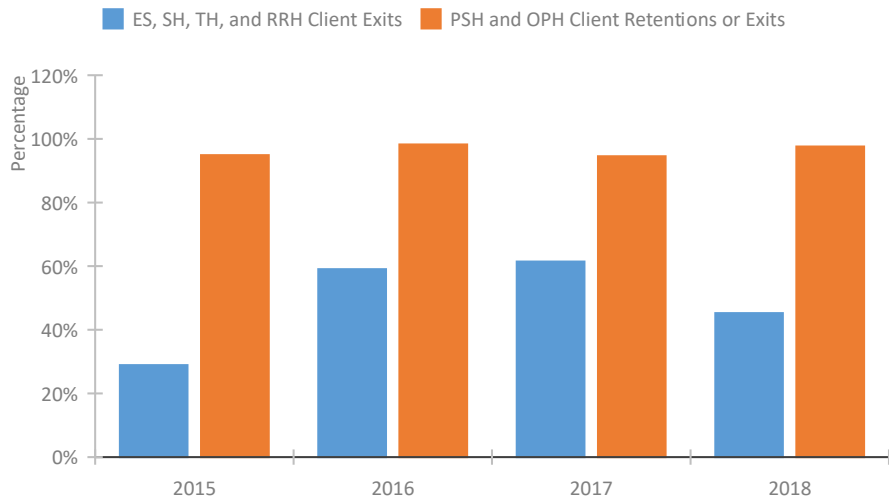
Length of Time Homeless



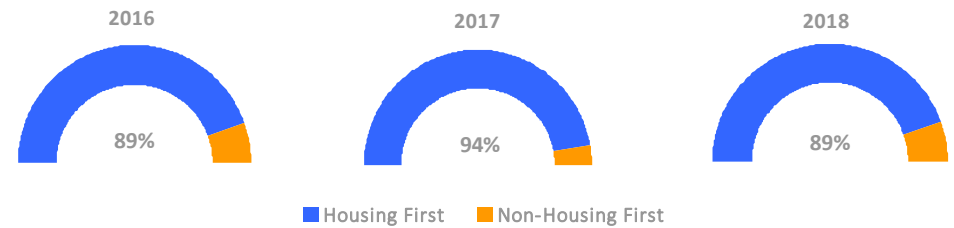
Returns to Homelessness Over Time



Exits to Permanent Housing by Program Type



Proportion of Housing First Projects by Year



Number of Projects by Year

	2016	2017	2018
Housing First Projects	16	17	17
Non-Housing First Projects	2	1	2

Data Summary: CO-500 Colorado Balance of State CoC

Point-In-Time Count Summary

	2014	2015	2016	2017	2018	2017-18 Change	% Change
Number of Sheltered Persons in Families	644	895	769	543	535	-8	-1%
Number of Unsheltered Persons in Families	288	745	745	908	908	0	0%
Number of Sheltered Individuals	539	819	920	968	946	-22	-2%
Number of Unsheltered Individuals	717	1,086	1,086	1,600	1,600	0	0%
Total Homeless Persons	2,188	3,545	3,520	4,019	3,989	-30	-1%
Number of Sheltered Families	191	275	238	162	163	1	1%
Number of Unsheltered Families	83	213	213	267	267	0	0%
Number of Total Families	274	488	451	429	430	1	0%
Sheltered Chronically Homeless Individuals	73	201	167	210	200	-10	-5%
Unsheltered Chronically Homeless Individuals	317	404	404	512	512	0	0%
Total Chronically Homeless Individuals	390	605	571	722	712	-10	-1%
Sheltered Veterans	86	137	133	141	124	-17	-12%
Unsheltered Veterans	93	158	158	191	191	0	0%
Total Veterans	179	295	291	332	315	-17	-5%
Sheltered Unaccompanied Youth (up to 24)	--	75	75	75	81	6	8%
Unsheltered Unaccompanied Youth (up to 24)	--	129	129	165	165	0	0%
Total Unaccompanied Youth (up to 24)	--	204	204	240	246	6	2%

System Performance Measures Summary

	2014	2015	2016	2017	2018	2017-18 Change	% Change
Average Length of Time Homeless (days)	N/A	144	166	159	191	32	20.1%
Rate People Return to Homelessness in 6 Months	N/A	5.2%	12.9%	7.6%	6.4%	-1.2%	N/A
Number of People who are Homeless for the First Time	N/A	2908	2690	3468	2811	-657	-18.9%
Rate People Exit from ES, SH, TH, and RRH to PH	N/A	28.9%	59.1%	61.5%	45.2%	-16.2%	N/A
Rate People in PSH and OPH Retain or Exit to PH	N/A	94.9%	98.3%	94.5%	97.6%	3.1%	N/A

Housing Inventory Count Summary

	2014	2015	2016	2017	2018	2017-18 Change	% Change
Emergency Shelter (ES)	963	1,012	1,013	1,033	980	-53	-5%
Transitional Housing (TH)	966	1,168	1,102	715	723	8	1%
Permanent Supportive Housing (PSH)	665	697	809	850	919	69	8%
Rapid Re-Housing (RRH)	32	30	118	284	206	-78	-27%
Other Permanent Housing (OPH)	10	10	--	30	27	-3	-10%

Award Summary

	2014	2015	2016	2017	2018	2017-18 Change	% Change
Continuum of Care (CoC)	\$3,248,406	\$2,874,257	\$2,870,432	\$2,908,936	\$3,079,312	\$170,376	6%
ESG (CO state recipient - no direct funding)	\$1,674,830	\$1,810,390	\$1,815,205	\$2,398,397	\$1,965,723	(\$432,674)	-18%