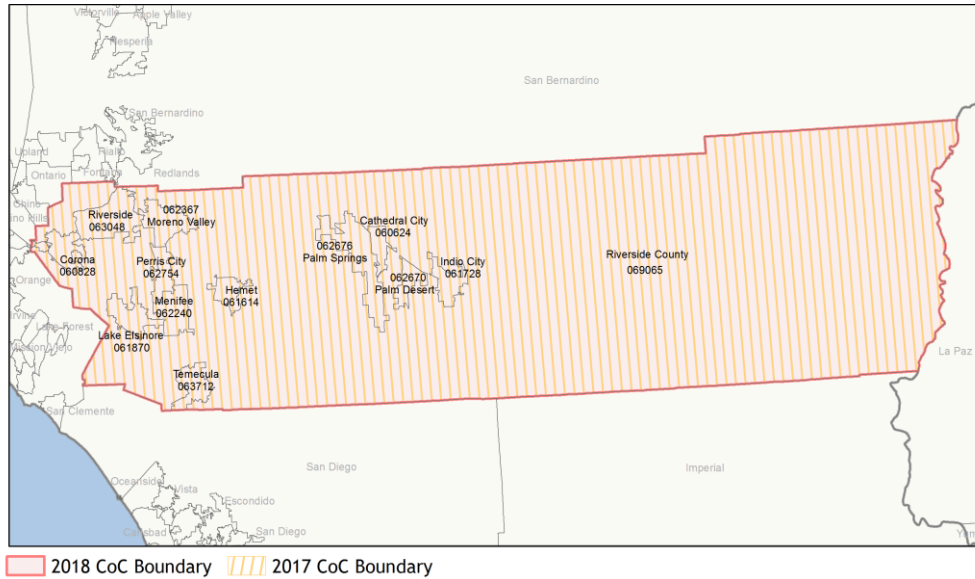
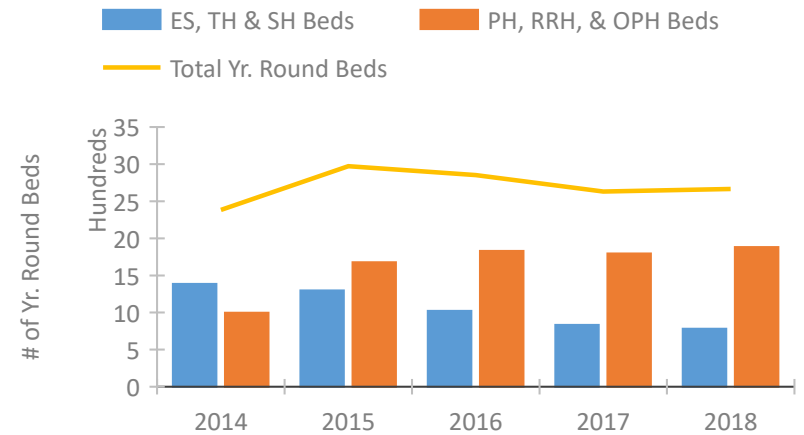


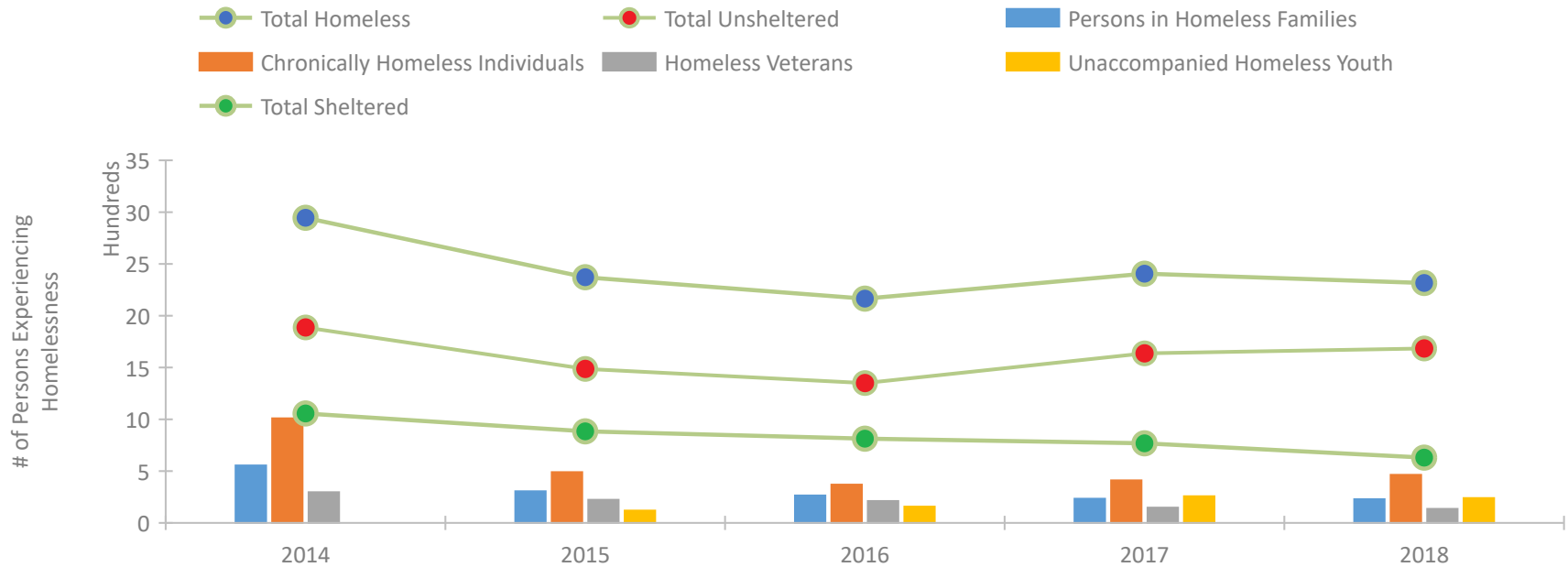
CoC Performance Profile CA-608 Riverside City & County CoC



Housing Inventory Count by Program Type

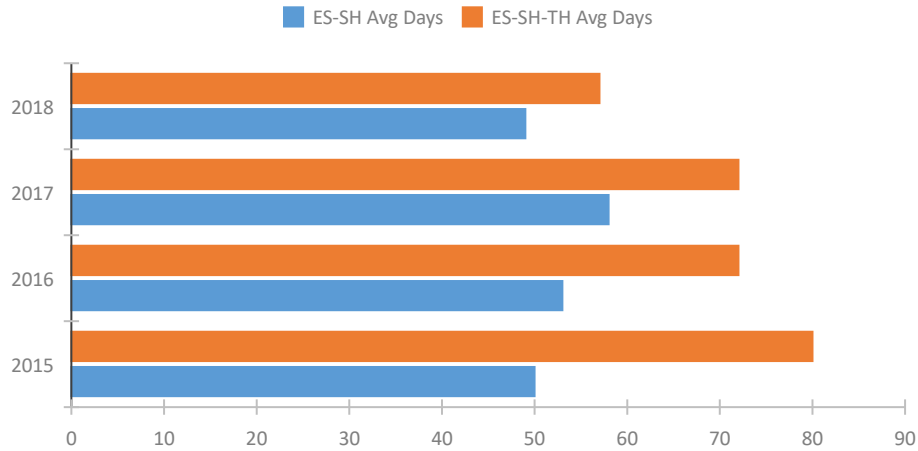


Homeless Population – Point-in-Time (PIT) Count

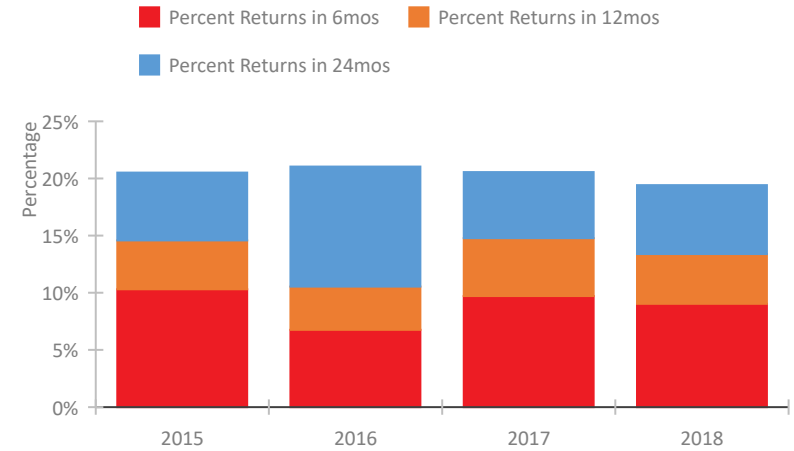


CoC Performance Profile CA-608 Riverside City & County CoC

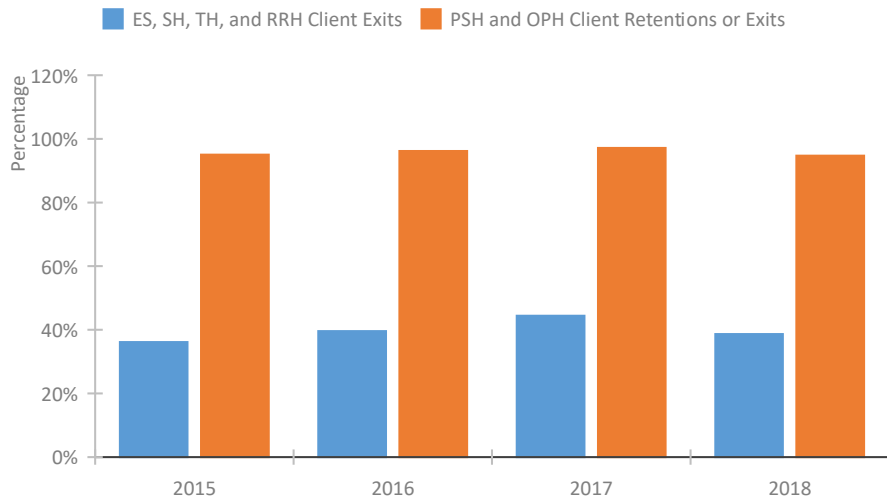
Length of Time Homeless



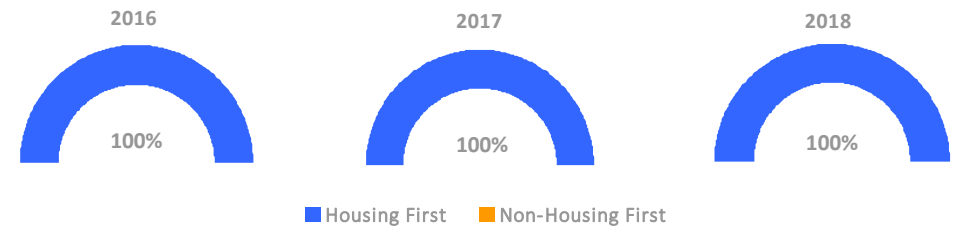
Returns to Homelessness Over Time



Exits to Permanent Housing by Program Type



Proportion of Housing First Projects by Year



Number of Projects by Year

	2016	2017	2018
Housing First Projects	23	23	24
Non-Housing First Projects	0	0	0

Data Summary: CA-608 Riverside City & County CoC

Point-In-Time Count Summary

	2014	2015	2016	2017	2018	2017-18 Change	% Change
Number of Sheltered Persons in Families	411	280	235	230	220	-10	-4%
Number of Unsheltered Persons in Families	144	26	30	4	9	5	125%
Number of Sheltered Individuals	646	604	579	538	411	-127	-24%
Number of Unsheltered Individuals	1,744	1,462	1,321	1,634	1,676	42	3%
Total Homeless Persons	2,945	2,372	2,165	2,406	2,316	-90	-4%
Number of Sheltered Families	129	79	64	68	65	-3	-4%
Number of Unsheltered Families	45	10	10	1	4	3	300%
Number of Total Families	174	89	74	69	69	0	0%
Sheltered Chronically Homeless Individuals	15	89	70	70	77	7	10%
Unsheltered Chronically Homeless Individuals	995	401	299	341	387	46	13%
Total Chronically Homeless Individuals	1,010	490	369	411	464	53	13%
Sheltered Veterans	115	121	111	57	37	-20	-35%
Unsheltered Veterans	181	102	100	91	99	8	9%
Total Veterans	296	223	211	148	136	-12	-8%
Sheltered Unaccompanied Youth (up to 24)	--	57	75	75	65	-10	-13%
Unsheltered Unaccompanied Youth (up to 24)	--	62	82	182	175	-7	-4%
Total Unaccompanied Youth (up to 24)	--	119	157	257	240	-17	-7%

System Performance Measures Summary

	2014	2015	2016	2017	2018	2017-18 Change	% Change
Average Length of Time Homeless (days)	N/A	80	72	72	57	-15	-20.8%
Rate People Return to Homelessness in 6 Months	N/A	10.3%	6.8%	9.7%	9.0%	-0.7%	N/A
Number of People who are Homeless for the First Time	N/A	4039	3935	3604	3988	384	10.7%
Rate People Exit from ES, SH, TH, and RRH to PH	N/A	36.2%	39.6%	44.4%	38.7%	-5.7%	N/A
Rate People in PSH and OPH Retain or Exit to PH	N/A	95.0%	96.2%	97.1%	94.7%	-2.4%	N/A

Housing Inventory Count Summary

	2014	2015	2016	2017	2018	2017-18 Change	% Change
Emergency Shelter (ES)	665	720	689	614	602	-12	-2%
Transitional Housing (TH)	720	577	334	220	180	-40	-18%
Permanent Supportive Housing (PSH)	998	1,557	1,538	1,520	1,702	182	12%
Rapid Re-Housing (RRH)	--	120	292	277	181	-96	-35%

Award Summary

	2014	2015	2016	2017	2018	2017-18 Change	% Change
Continuum of Care (CoC)	\$9,857,934	\$9,289,429	\$9,385,526	\$9,978,890	\$10,106,803	\$127,913	1%
Emergency Solutions Grants (ESG)	\$983,856	\$1,070,270	\$1,100,871	\$1,445,952	\$1,127,973	(\$317,979)	-22%