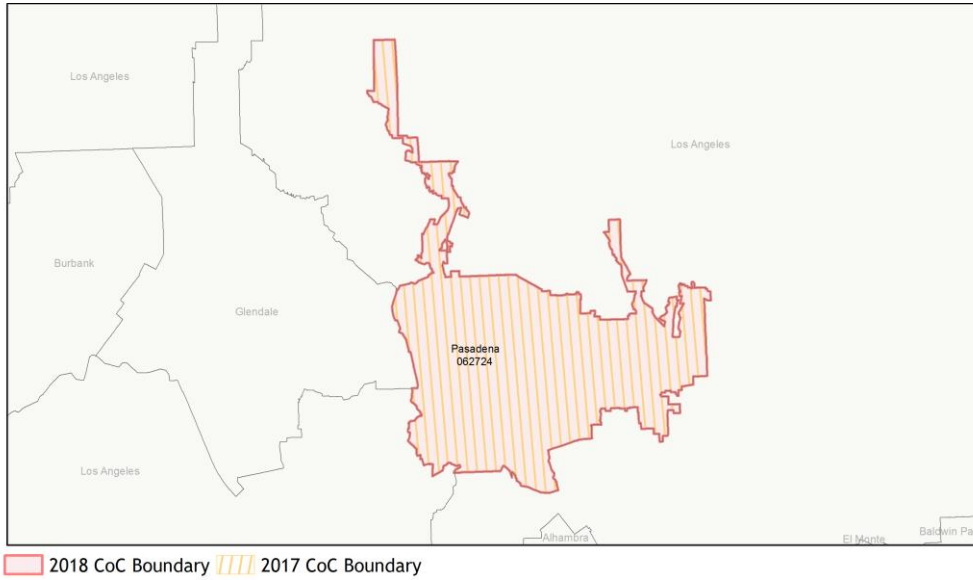
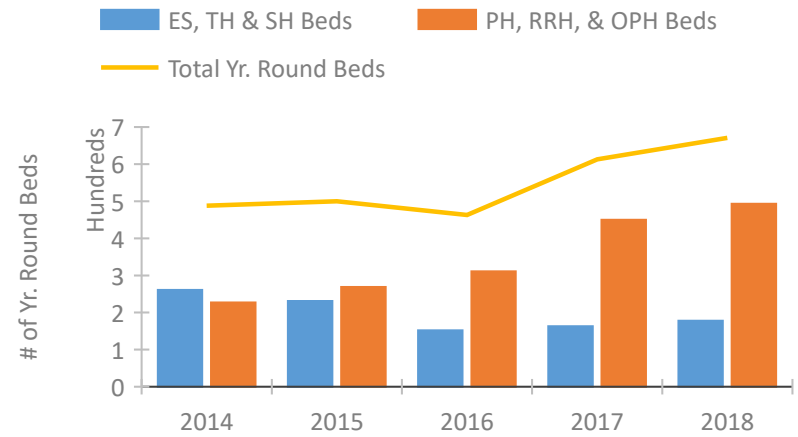


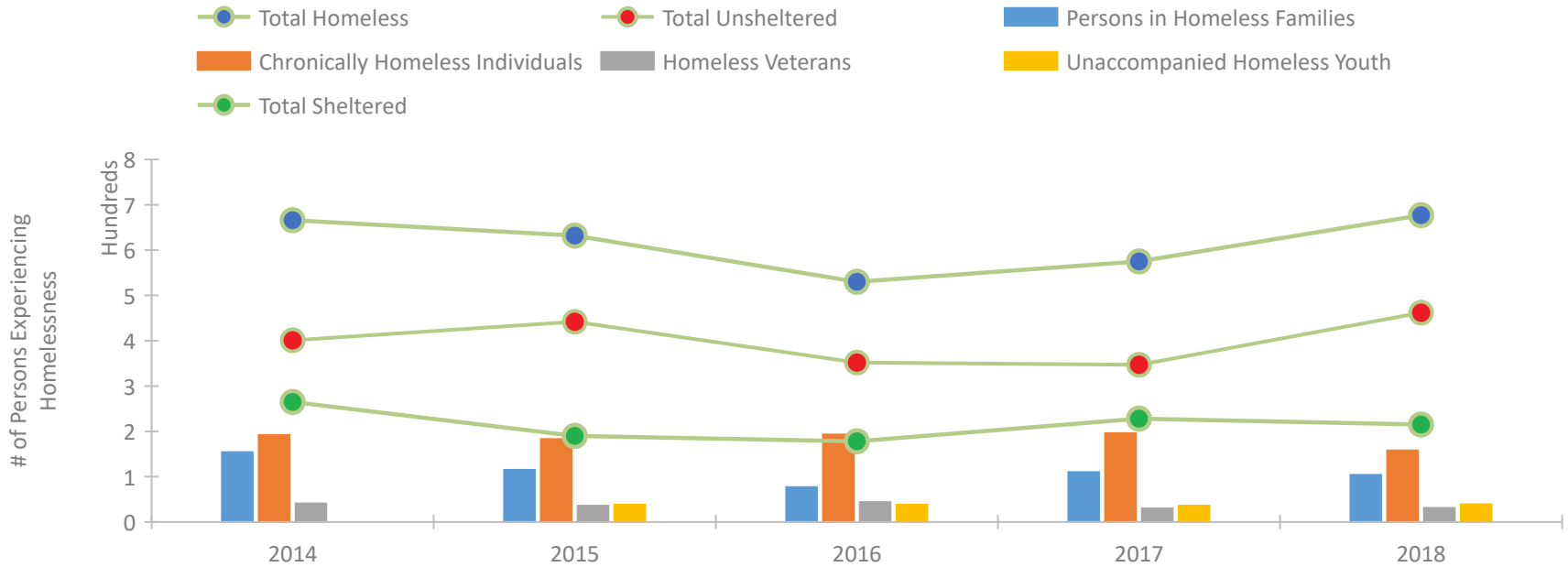
## CoC Performance Profile CA-607 Pasadena CoC



### Housing Inventory Count by Program Type

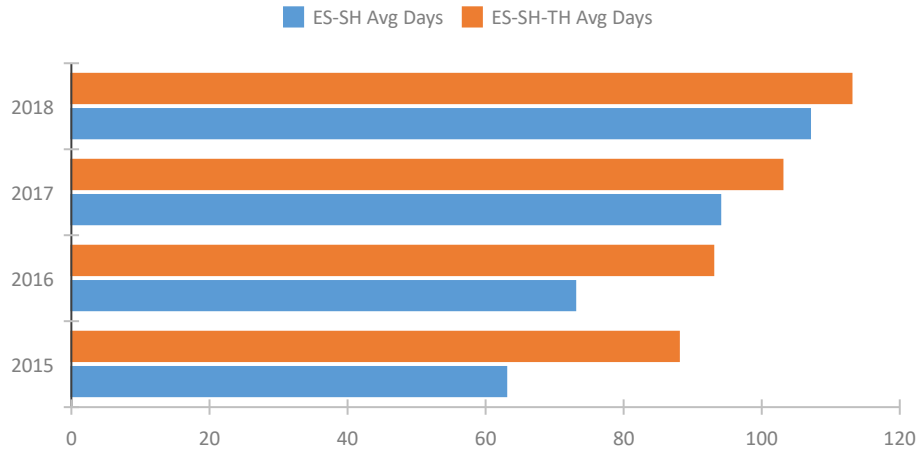


### Homeless Population – Point-in-Time (PIT) Count

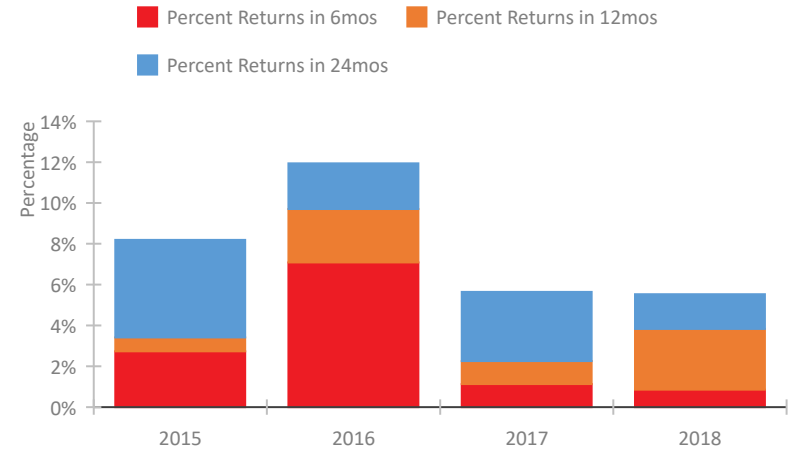


## CoC Performance Profile CA-607 Pasadena CoC

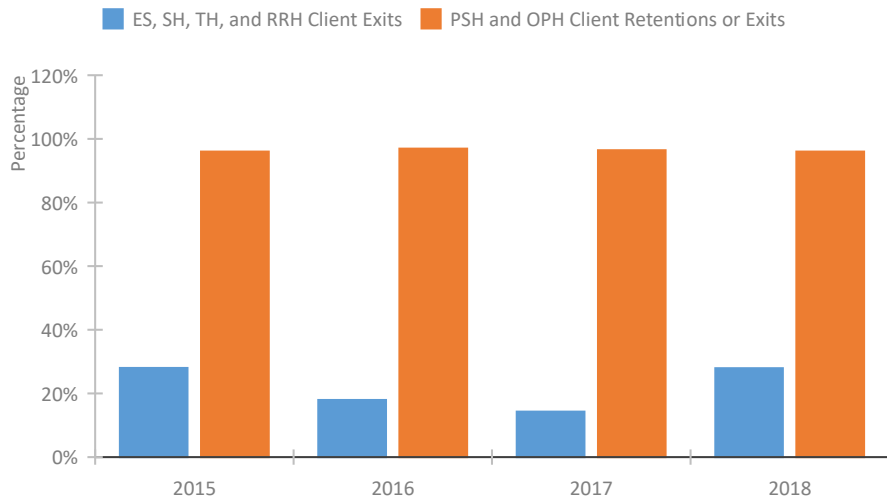
### Length of Time Homeless



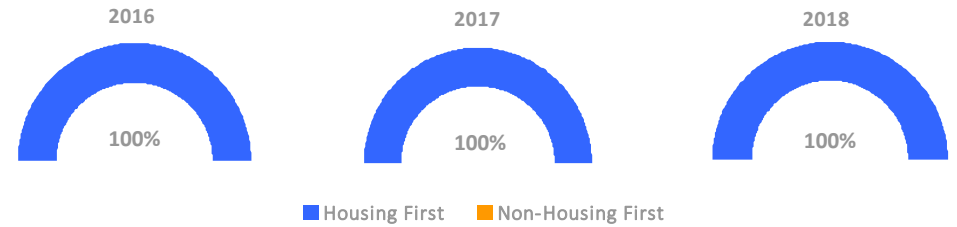
### Returns to Homelessness Over Time



### Exits to Permanent Housing by Program Type



### Proportion of Housing First Projects by Year



#### Number of Projects by Year

	2016	2017	2018
Housing First Projects	13	12	12
Non-Housing First Projects	0	0	0

## Data Summary: CA-607 Pasadena CoC

### Point-In-Time Count Summary

	2014	2015	2016	2017	2018	2017-18 Change	% Change
Number of Sheltered Persons in Families	140	96	74	100	81	-19	-19%
Number of Unsheltered Persons in Families	14	19	3	10	23	13	130%
Number of Sheltered Individuals	125	94	104	128	134	6	5%
Number of Unsheltered Individuals	387	423	349	337	439	102	30%
<b>Total Homeless Persons</b>	<b>666</b>	<b>632</b>	<b>530</b>	<b>575</b>	<b>677</b>	<b>102</b>	<b>18%</b>
Number of Sheltered Families	46	40	25	33	29	-4	-12%
Number of Unsheltered Families	4	7	1	4	8	4	100%
<b>Number of Total Families</b>	<b>50</b>	<b>47</b>	<b>26</b>	<b>37</b>	<b>37</b>	<b>0</b>	<b>0%</b>
Sheltered Chronically Homeless Individuals	43	7	39	47	71	24	51%
Unsheltered Chronically Homeless Individuals	149	176	154	149	87	-62	-42%
<b>Total Chronically Homeless Individuals</b>	<b>192</b>	<b>183</b>	<b>193</b>	<b>196</b>	<b>158</b>	<b>-38</b>	<b>-19%</b>
Sheltered Veterans	3	4	13	11	8	-3	-27%
Unsheltered Veterans	38	32	31	19	23	4	21%
<b>Total Veterans</b>	<b>41</b>	<b>36</b>	<b>44</b>	<b>30</b>	<b>31</b>	<b>1</b>	<b>3%</b>
Sheltered Unaccompanied Youth (up to 24)	--	3	5	8	8	0	0%
Unsheltered Unaccompanied Youth (up to 24)	--	35	33	28	31	3	11%
<b>Total Unaccompanied Youth (up to 24)</b>	<b>--</b>	<b>38</b>	<b>38</b>	<b>36</b>	<b>39</b>	<b>3</b>	<b>8%</b>

### System Performance Measures Summary

	2014	2015	2016	2017	2018	2017-18 Change	% Change
Average Length of Time Homeless (days)	N/A	88	93	103	113	10	9.7%
Rate People Return to Homelessness in 6 Months	N/A	2.7%	7.1%	1.1%	0.9%	-0.3%	N/A
Number of People who are Homeless for the First Time	N/A	709	636	655	650	-5	-0.8%
Rate People Exit from ES, SH, TH, and RRH to PH	N/A	28.0%	17.9%	14.3%	27.9%	13.6%	N/A
Rate People in PSH and OPH Retain or Exit to PH	N/A	96.0%	96.9%	96.4%	96.0%	-0.4%	N/A

### Housing Inventory Count Summary

	2014	2015	2016	2017	2018	2017-18 Change	% Change
Emergency Shelter (ES)	130	130	68	99	127	28	28%
Transitional Housing (TH)	131	101	84	64	51	-13	-20%
Permanent Supportive Housing (PSH)	227	269	307	405	445	40	10%
Rapid Re-Housing (RRH)	--	--	4	45	48	3	7%

### Award Summary

	2014	2015	2016	2017	2018	2017-18 Change	% Change
<b>Continuum of Care (CoC)</b>	\$2,876,396	\$3,112,977	\$3,176,554	\$3,255,774	\$3,561,687	\$305,913	9%
<b>Emergency Solutions Grants (ESG)</b>	\$144,224	\$160,034	\$160,921	\$161,517	\$158,823	(\$2,694)	-2%