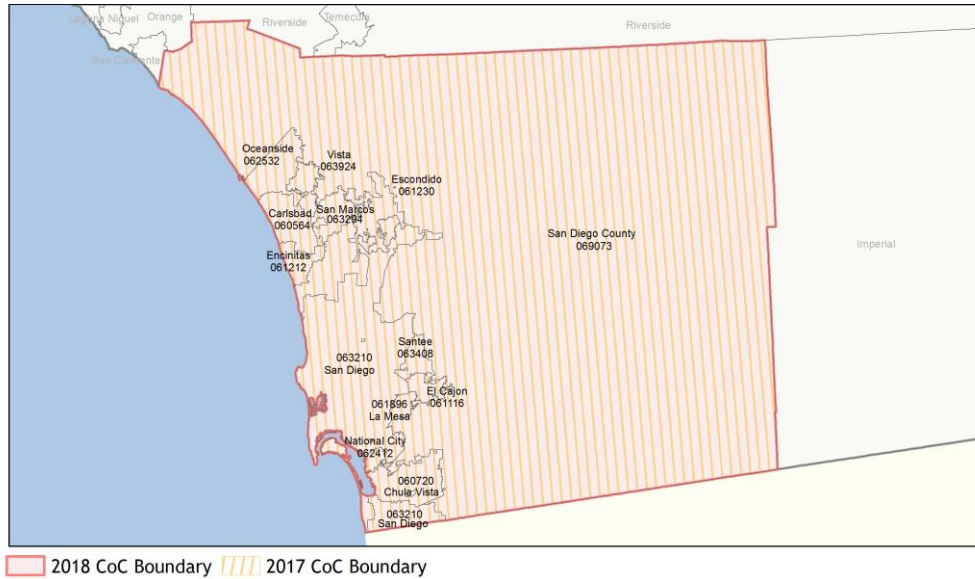
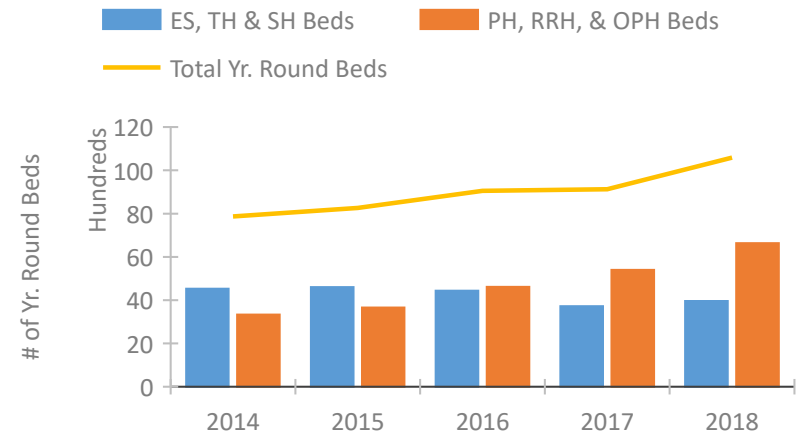


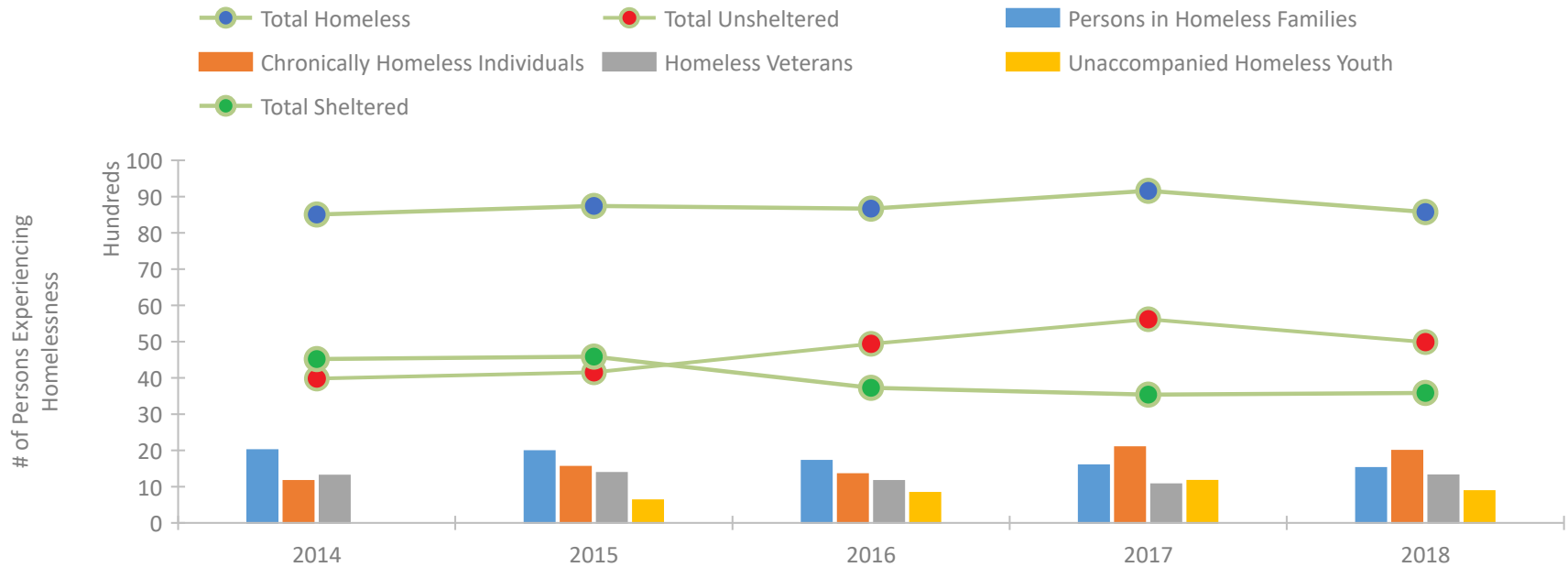
CoC Performance Profile CA-601 San Diego City and County CoC



Housing Inventory Count by Program Type

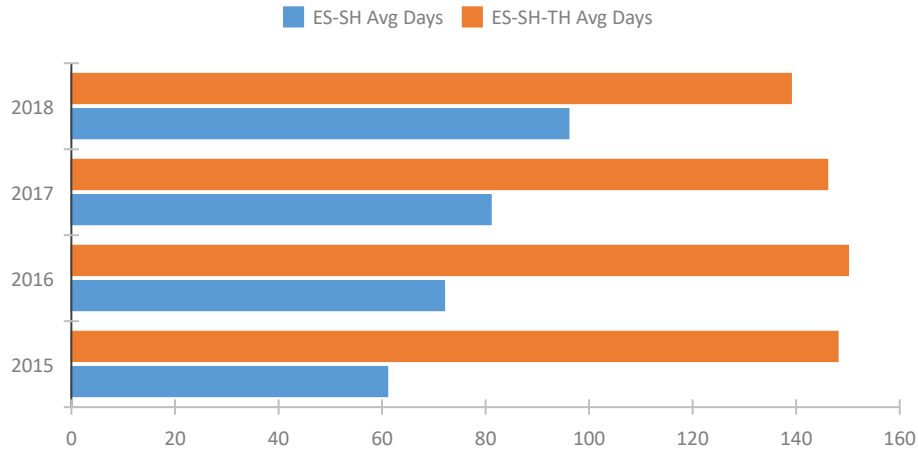


Homeless Population – Point-in-Time (PIT) Count

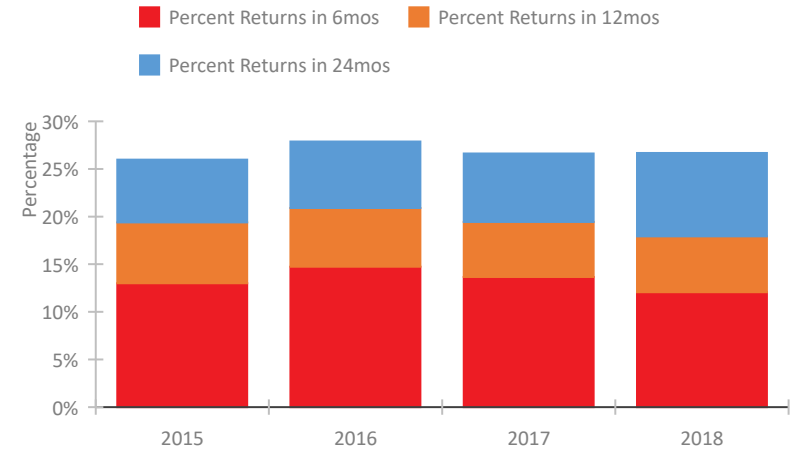


CoC Performance Profile CA-601 San Diego City and County CoC

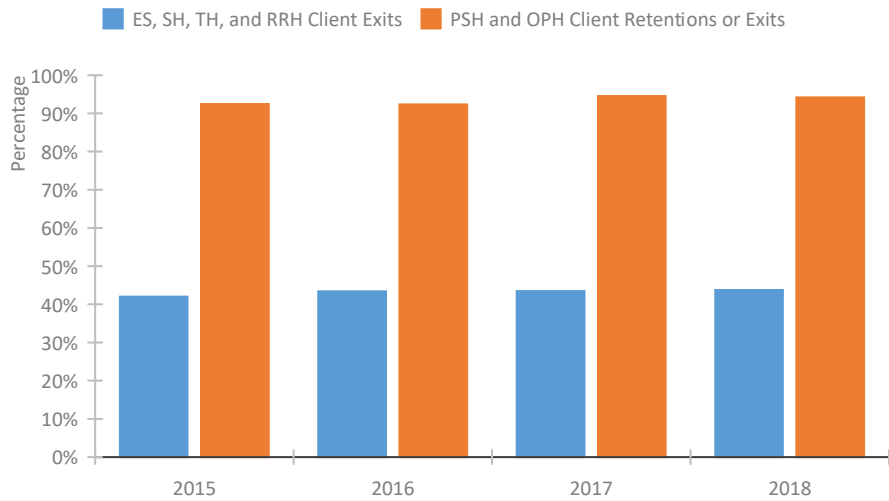
Length of Time Homeless



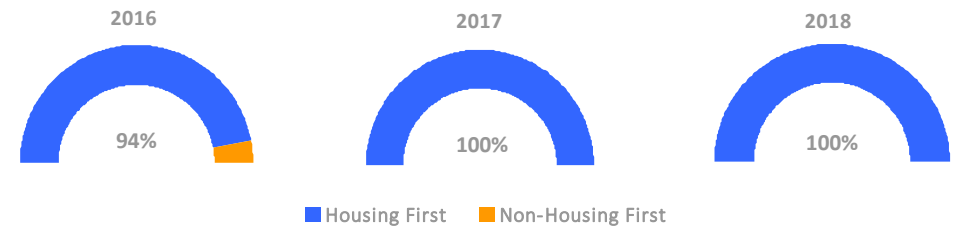
Returns to Homelessness Over Time



Exits to Permanent Housing by Program Type



Proportion of Housing First Projects by Year



Number of Projects by Year			
	2016	2017	2018
Housing First Projects	48	47	50
Non-Housing First Projects	3	0	0

Data Summary: CA-601 San Diego City and County CoC

Point-In-Time Count Summary

	2014	2015	2016	2017	2018	2017-18 Change	% Change
Number of Sheltered Persons in Families	1,698	1,737	1,432	1,296	1,199	-97	-7%
Number of Unsheltered Persons in Families	309	244	282	293	314	21	7%
Number of Sheltered Individuals	2,823	2,849	2,297	2,243	2,387	144	6%
Number of Unsheltered Individuals	3,676	3,912	4,658	5,328	4,676	-652	-12%
Total Homeless Persons	8,506	8,742	8,669	9,160	8,576	-584	-6%
Number of Sheltered Families	547	544	469	423	381	-42	-10%
Number of Unsheltered Families	92	87	76	91	102	11	12%
Number of Total Families	639	631	545	514	483	-31	-6%
Sheltered Chronically Homeless Individuals	217	298	258	334	646	312	93%
Unsheltered Chronically Homeless Individuals	939	1,249	1,087	1,754	1,345	-409	-23%
Total Chronically Homeless Individuals	1,156	1,547	1,345	2,088	1,991	-97	-5%
Sheltered Veterans	790	750	584	613	653	40	7%
Unsheltered Veterans	517	631	572	454	659	205	45%
Total Veterans	1,307	1,381	1,156	1,067	1,312	245	23%
Sheltered Unaccompanied Youth (up to 24)	--	273	257	277	186	-91	-33%
Unsheltered Unaccompanied Youth (up to 24)	--	352	573	883	690	-193	-22%
Total Unaccompanied Youth (up to 24)	--	625	830	1,160	876	-284	-24%

System Performance Measures Summary

	2014	2015	2016	2017	2018	2017-18 Change	% Change
Average Length of Time Homeless (days)	N/A	148	150	146	139	-7	-4.8%
Rate People Return to Homelessness in 6 Months	N/A	13.0%	14.7%	13.7%	12.1%	-1.6%	N/A
Number of People who are Homeless for the First Time	N/A	8358	8898	8968	8653	-315	-3.5%
Rate People Exit from ES, SH, TH, and RRH to PH	N/A	42.0%	43.4%	43.5%	43.8%	0.3%	N/A
Rate People in PSH and OPH Retain or Exit to PH	N/A	92.5%	92.4%	94.6%	94.2%	-0.3%	N/A

Housing Inventory Count Summary

	2014	2015	2016	2017	2018	2017-18 Change	% Change
Emergency Shelter (ES)	524	763	1,312	1,337	2,050	713	53%
Safe Haven (SH)	59	59	57	42	91	49	117%
Transitional Housing (TH)	3,948	3,783	3,065	2,343	1,818	-525	-22%
Permanent Supportive Housing (PSH)	2,914	3,196	3,709	3,882	4,403	521	13%
Rapid Re-Housing (RRH)	39	158	579	706	1,372	666	94%
Other Permanent Housing (OPH)	382	305	329	814	857	43	5%

Award Summary

	2014	2015	2016	2017	2018	2017-18 Change	% Change
Continuum of Care (CoC)	\$16,170,164	\$17,859,969	\$18,229,194	\$20,035,551	\$21,394,691	\$1,359,140	7%
Emergency Solutions Grants (ESG)	\$1,347,553	\$1,452,078	\$1,614,110	\$1,622,174	\$1,641,125	\$18,951	1%
Youth Homelessness Demonstration Program (YHDP)	N/A	N/A	--	\$7,939,097	--	--	--