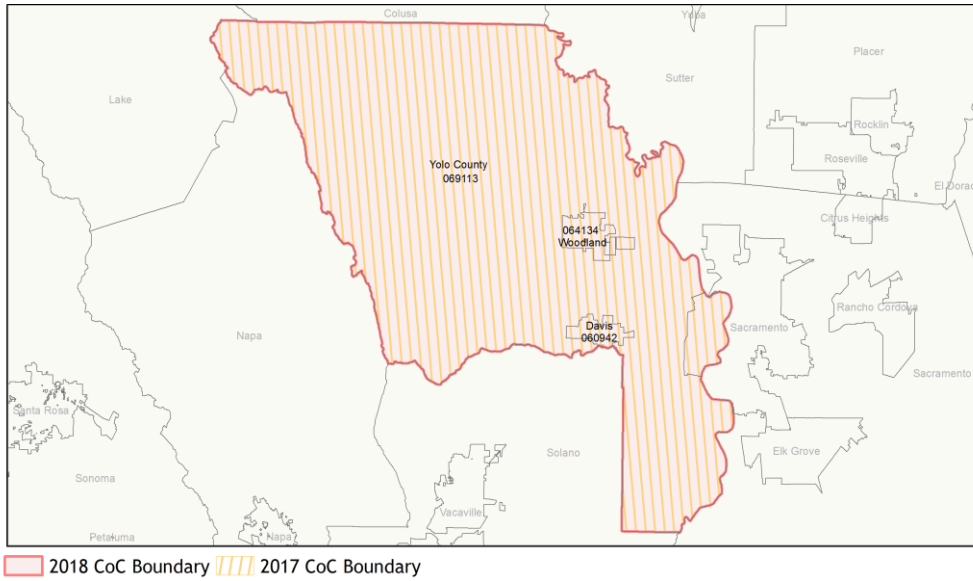
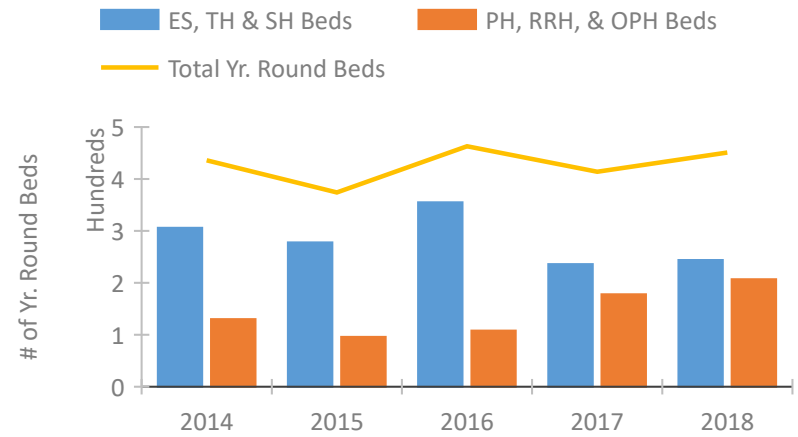


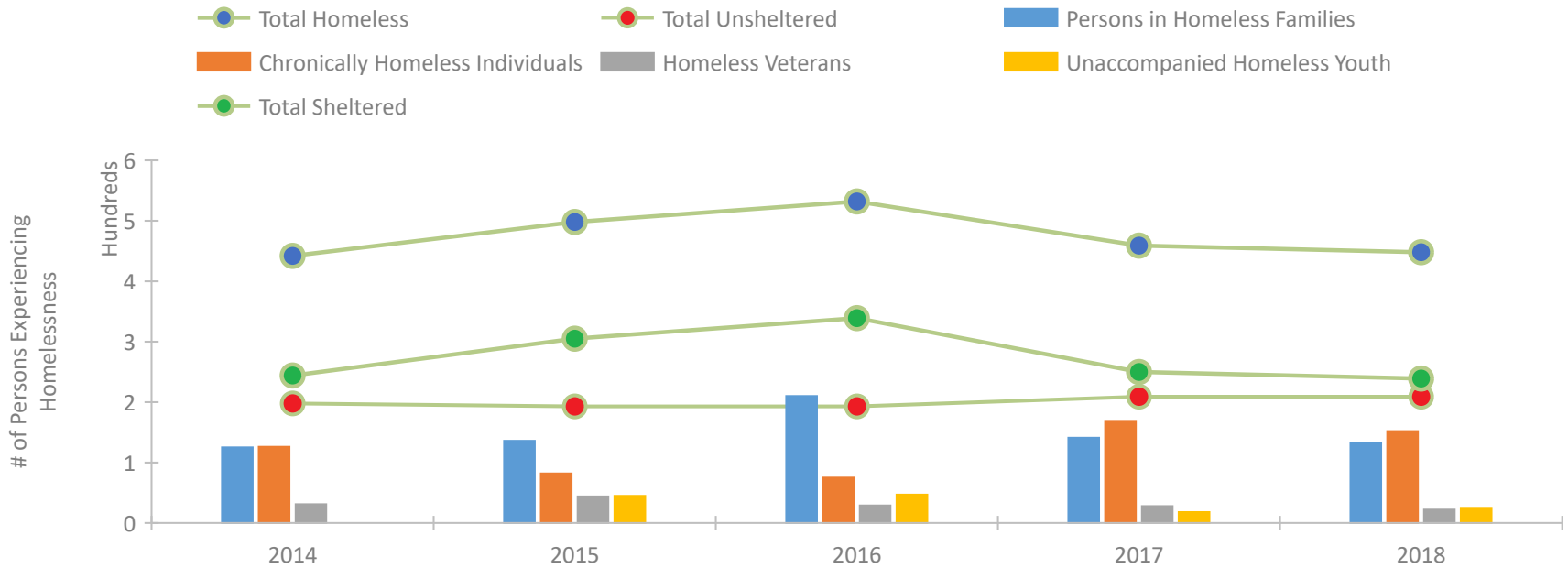
CoC Performance Profile CA-521 Davis, Woodland/Yolo County CoC



Housing Inventory Count by Program Type

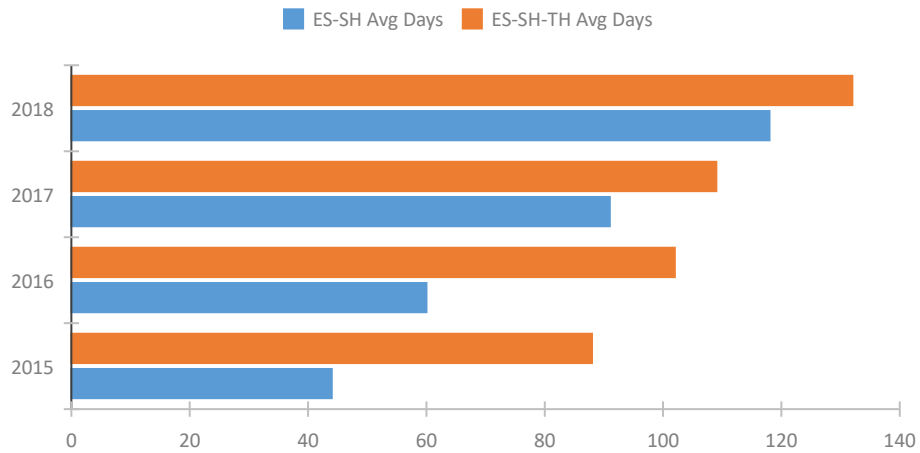


Homeless Population – Point-in-Time (PIT) Count

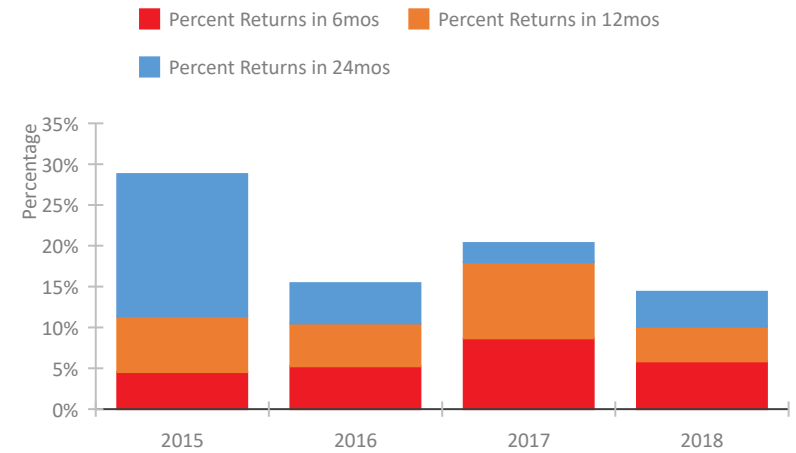


CoC Performance Profile CA-521 Davis, Woodland/Yolo County CoC

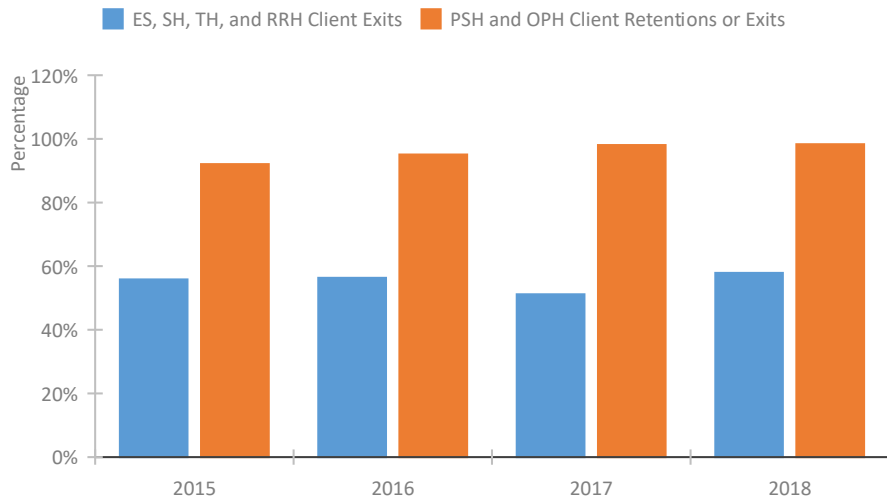
Length of Time Homeless



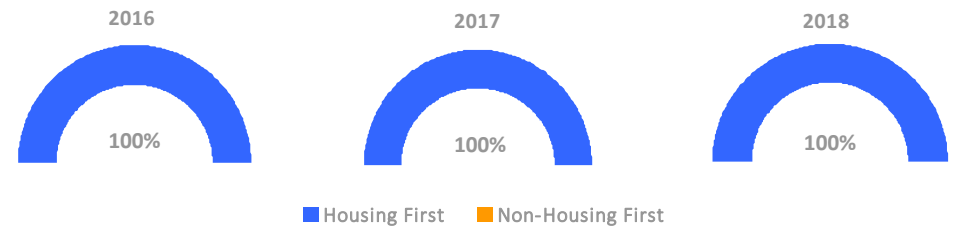
Returns to Homelessness Over Time



Exits to Permanent Housing by Program Type



Proportion of Housing First Projects by Year



Number of Projects by Year

	2016	2017	2018
Housing First Projects	6	6	7
Non-Housing First Projects	0	0	0

Data Summary: CA-521 Davis, Woodland/Yolo County CoC

Point-In-Time Count Summary

	2014	2015	2016	2017	2018	2017-18 Change	% Change
Number of Sheltered Persons in Families	125	126	200	136	127	-9	-7%
Number of Unsheltered Persons in Families	0	10	10	5	5	0	0%
Number of Sheltered Individuals	119	179	139	114	112	-2	-2%
Number of Unsheltered Individuals	198	183	183	204	204	0	0%
Total Homeless Persons	442	498	532	459	448	-11	-2%
Number of Sheltered Families	38	36	65	38	47	9	24%
Number of Unsheltered Families	0	3	3	1	1	0	0%
Number of Total Families	38	39	68	39	48	9	23%
Sheltered Chronically Homeless Individuals	29	38	31	27	10	-17	-63%
Unsheltered Chronically Homeless Individuals	97	44	44	142	142	0	0%
Total Chronically Homeless Individuals	126	82	75	169	152	-17	-10%
Sheltered Veterans	11	28	13	10	4	-6	-60%
Unsheltered Veterans	20	16	16	18	18	0	0%
Total Veterans	31	44	29	28	22	-6	-21%
Sheltered Unaccompanied Youth (up to 24)	--	14	16	9	16	7	78%
Unsheltered Unaccompanied Youth (up to 24)	--	31	31	9	9	0	0%
Total Unaccompanied Youth (up to 24)	--	45	47	18	25	7	39%

System Performance Measures Summary

	2014	2015	2016	2017	2018	2017-18 Change	% Change
Average Length of Time Homeless (days)	N/A	88	102	109	132	23	21.1%
Rate People Return to Homelessness in 6 Months	N/A	4.5%	5.2%	8.7%	5.9%	-2.8%	N/A
Number of People who are Homeless for the First Time	N/A	527	392	263	536	273	103.8%
Rate People Exit from ES, SH, TH, and RRH to PH	N/A	55.8%	56.3%	51.2%	57.9%	6.7%	N/A
Rate People in PSH and OPH Retain or Exit to PH	N/A	92.1%	95.1%	98.1%	98.3%	0.2%	N/A

Housing Inventory Count Summary

	2014	2015	2016	2017	2018	2017-18 Change	% Change
Emergency Shelter (ES)	99	100	186	184	157	-27	-15%
Transitional Housing (TH)	207	178	169	52	87	35	67%
Permanent Supportive Housing (PSH)	82	89	72	101	132	31	31%
Rapid Re-Housing (RRH)	48	7	1	77	75	-2	-3%

Award Summary

	2014	2015	2016	2017	2018	2017-18 Change	% Change
Continuum of Care (CoC)	\$453,504	\$474,575	\$487,860	\$490,890	\$481,697	(\$9,193)	-2%
ESG (CA state recipient - no direct funding)	\$10,627,068	\$11,651,365	\$11,827,536	\$12,006,375	\$11,776,926	(\$229,449)	-2%