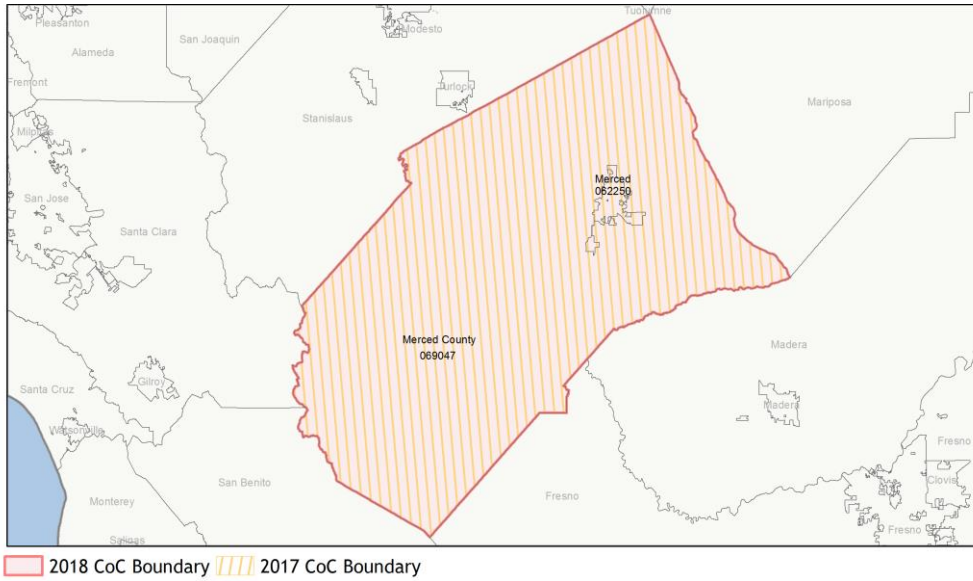
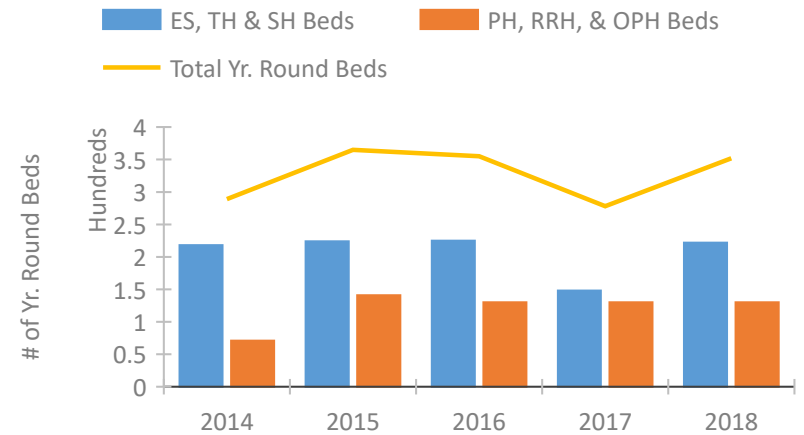


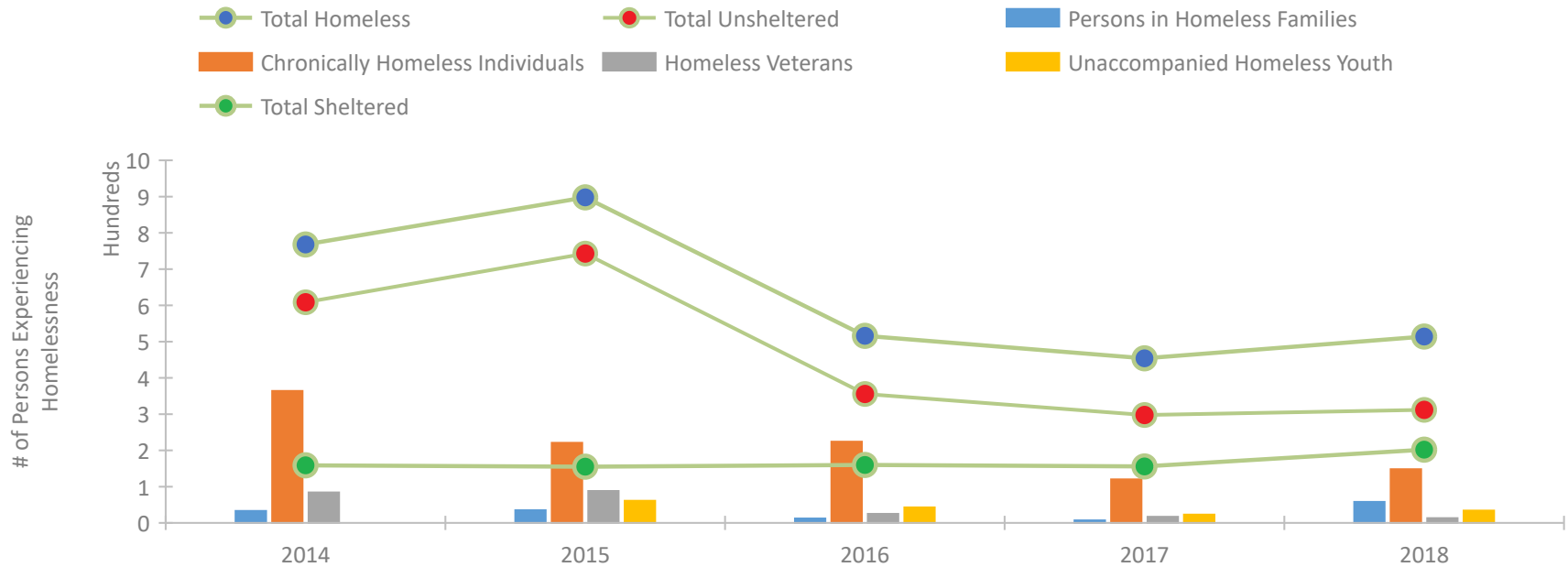
## CoC Performance Profile CA-520 Merced City & County CoC



### Housing Inventory Count by Program Type

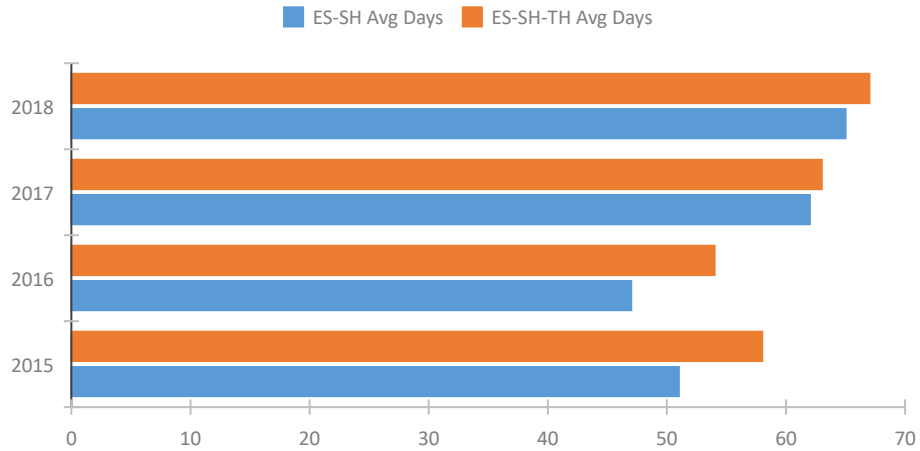


### Homeless Population – Point-in-Time (PIT) Count

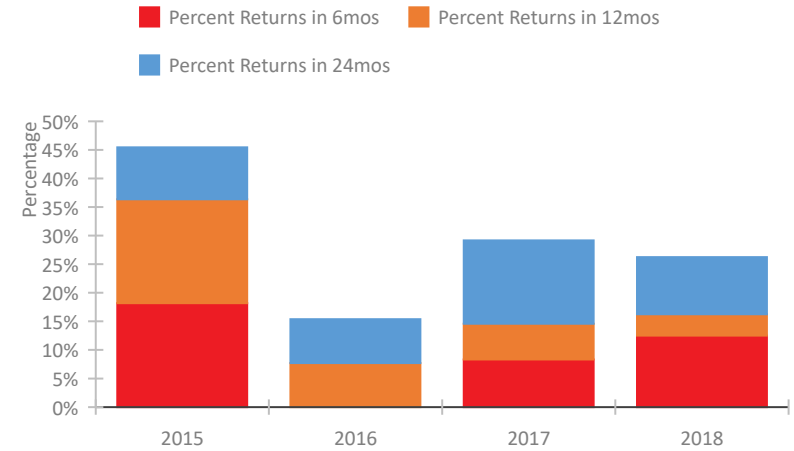


## CoC Performance Profile CA-520 Merced City & County CoC

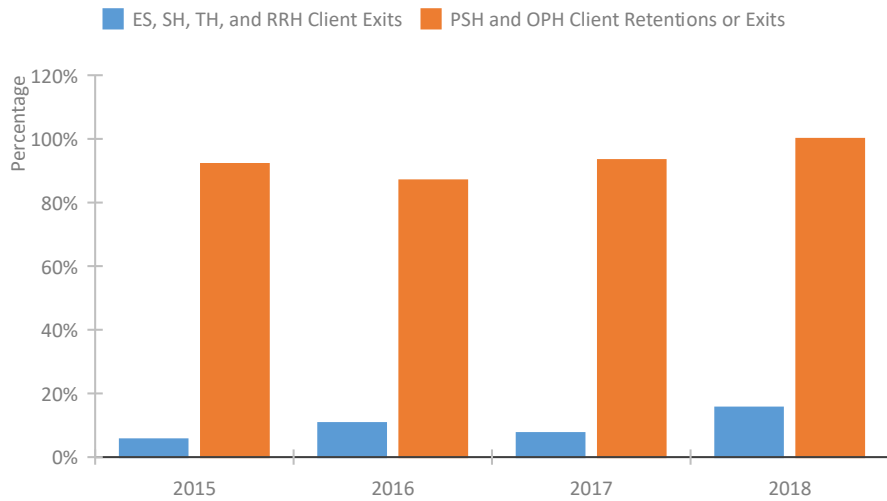
### Length of Time Homeless



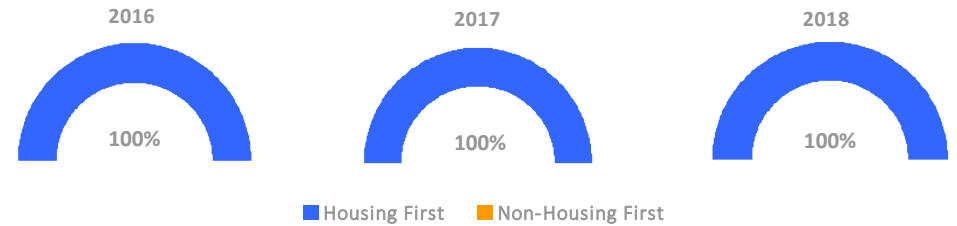
### Returns to Homelessness Over Time



### Exits to Permanent Housing by Program Type



### Proportion of Housing First Projects by Year



#### Number of Projects by Year

	2016	2017	2018
Housing First Projects	8	10	9
Non-Housing First Projects	0	0	0

## Data Summary: CA-520 Merced City & County CoC

### Point-In-Time Count Summary

	2014	2015	2016	2017	2018	2017-18 Change	% Change
Number of Sheltered Persons in Families	29	35	4	4	47	43	1075%
Number of Unsheltered Persons in Families	4	0	8	3	11	8	267%
Number of Sheltered Individuals	130	120	156	152	155	3	2%
Number of Unsheltered Individuals	605	743	348	295	301	6	2%
<b>Total Homeless Persons</b>	<b>768</b>	<b>898</b>	<b>516</b>	<b>454</b>	<b>514</b>	<b>60</b>	<b>13%</b>
Number of Sheltered Families	11	13	1	1	13	12	1200%
Number of Unsheltered Families	1	0	3	1	4	3	300%
<b>Number of Total Families</b>	<b>12</b>	<b>13</b>	<b>4</b>	<b>2</b>	<b>17</b>	<b>15</b>	<b>750%</b>
Sheltered Chronically Homeless Individuals	13	35	27	1	18	17	1700%
Unsheltered Chronically Homeless Individuals	351	186	197	119	130	11	9%
<b>Total Chronically Homeless Individuals</b>	<b>364</b>	<b>221</b>	<b>224</b>	<b>120</b>	<b>148</b>	<b>28</b>	<b>23%</b>
Sheltered Veterans	11	14	5	0	3	3	100%
Unsheltered Veterans	73	74	20	17	10	-7	-41%
<b>Total Veterans</b>	<b>84</b>	<b>88</b>	<b>25</b>	<b>17</b>	<b>13</b>	<b>-4</b>	<b>-24%</b>
Sheltered Unaccompanied Youth (up to 24)	--	2	14	0	13	13	100%
Unsheltered Unaccompanied Youth (up to 24)	--	59	29	23	21	-2	-9%
<b>Total Unaccompanied Youth (up to 24)</b>	<b>--</b>	<b>61</b>	<b>43</b>	<b>23</b>	<b>34</b>	<b>11</b>	<b>48%</b>

### System Performance Measures Summary

	2014	2015	2016	2017	2018	2017-18 Change	% Change
Average Length of Time Homeless (days)	N/A	58	54	63	67	4	6.3%
Rate People Return to Homelessness in 6 Months	N/A	18.2%	0.0%	8.3%	12.5%	4.2%	N/A
Number of People who are Homeless for the First Time	N/A	475	511	356	352	-4	-1.1%
Rate People Exit from ES, SH, TH, and RRH to PH	N/A	5.6%	10.7%	7.5%	15.6%	8%	N/A
Rate People in PSH and OPH Retain or Exit to PH	N/A	92.1%	87.0%	93.3%	100.0%	6.7%	N/A

### Housing Inventory Count Summary

	2014	2015	2016	2017	2018	2017-18 Change	% Change
Emergency Shelter (ES)	100	104	105	76	110	34	45%
Transitional Housing (TH)	118	120	120	72	112	40	56%
Permanent Supportive Housing (PSH)	71	78	130	130	130	0	0%

### Award Summary

	2014	2015	2016	2017	2018	2017-18 Change	% Change
<b>Continuum of Care (CoC)</b>	\$579,193	\$659,165	\$738,049	\$739,284	\$749,892	\$10,608	1%
<b>ESG (CA state recipient - no direct funding)</b>	\$10,627,068	\$11,651,365	\$11,827,536	\$12,006,375	\$11,776,926	(\$229,449)	-2%