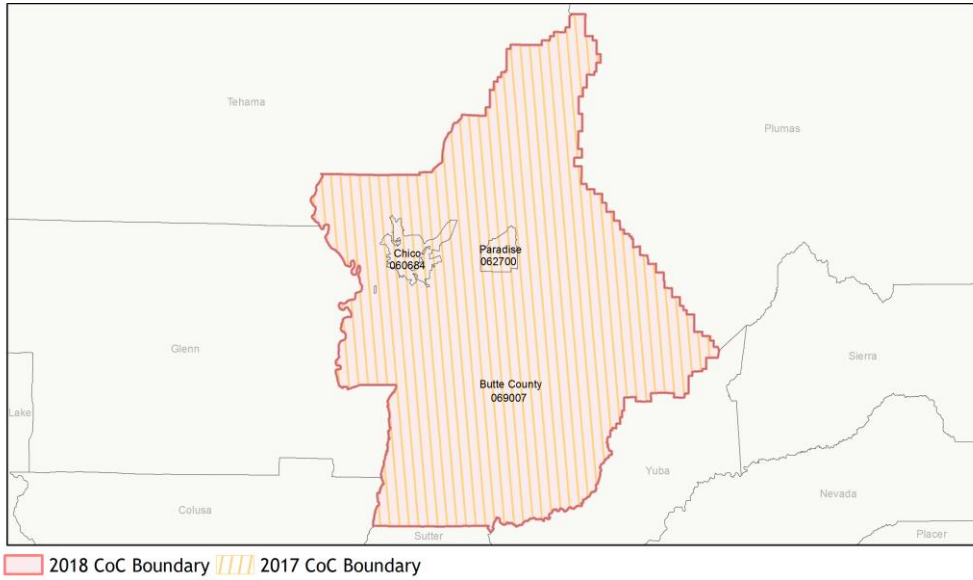
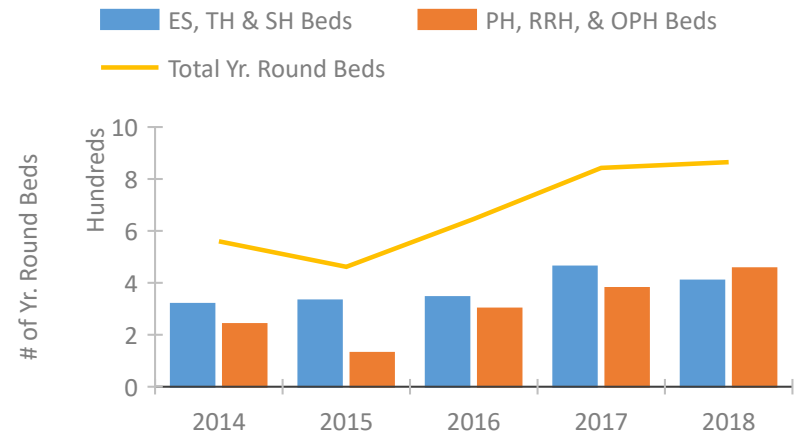


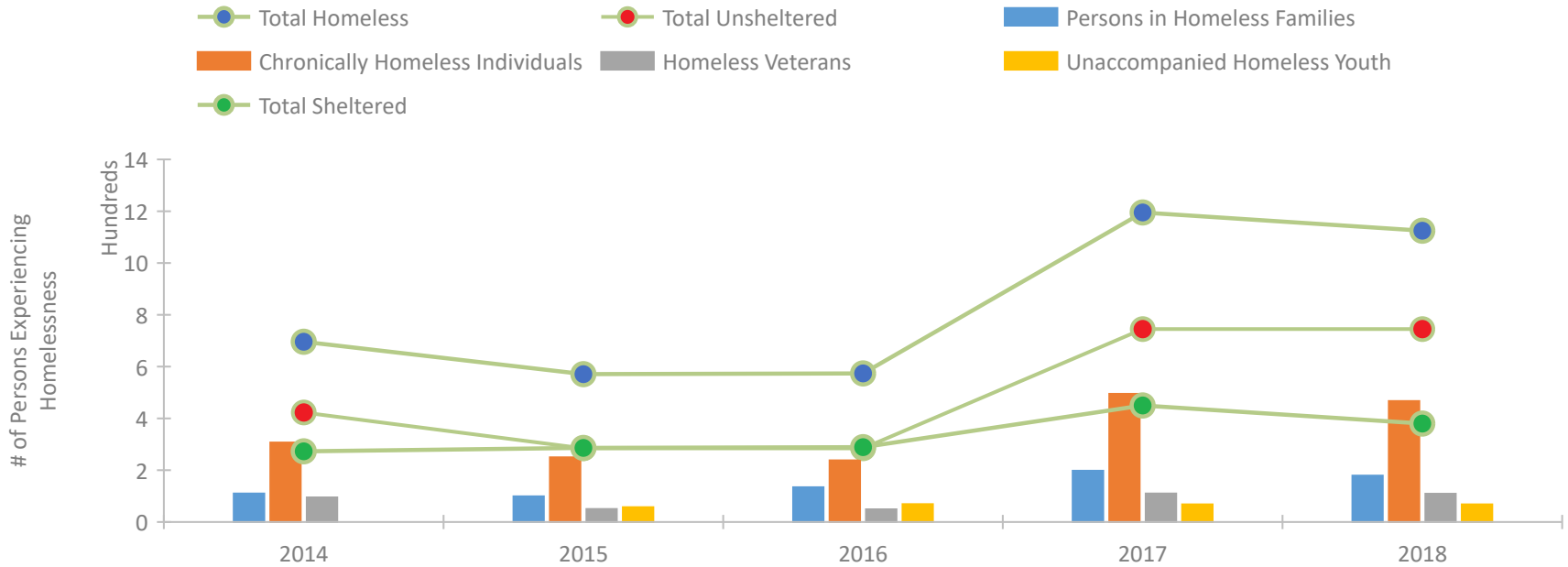
CoC Performance Profile CA-519 Chico, Paradise/Butte County CoC



Housing Inventory Count by Program Type

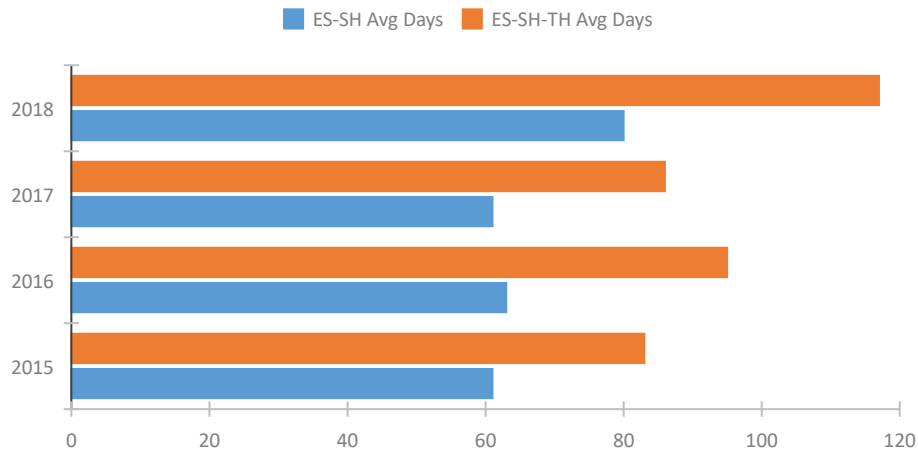


Homeless Population – Point-in-Time (PIT) Count

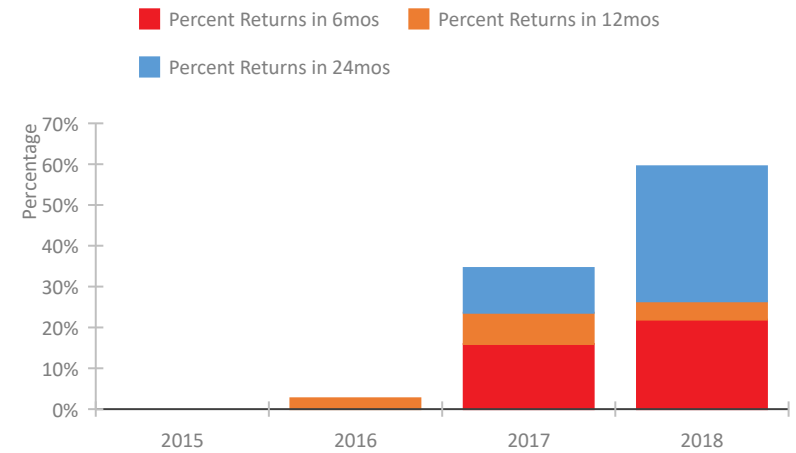


CoC Performance Profile CA-519 Chico, Paradise/Butte County CoC

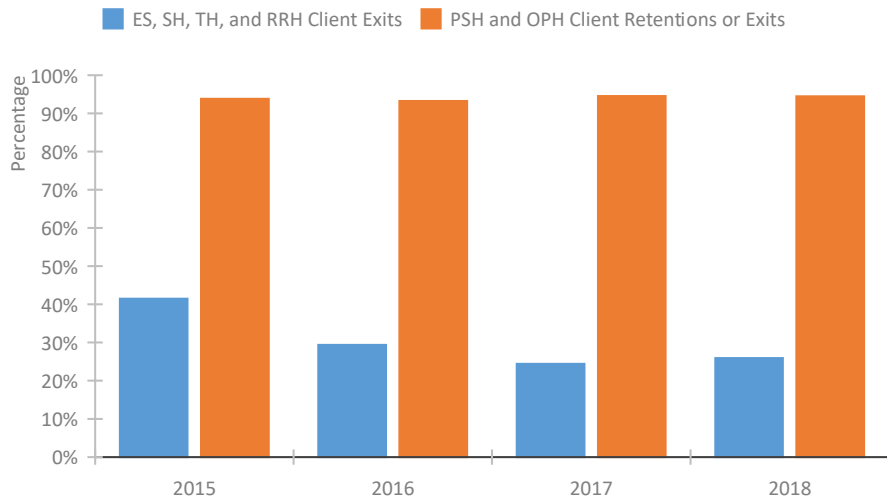
Length of Time Homeless



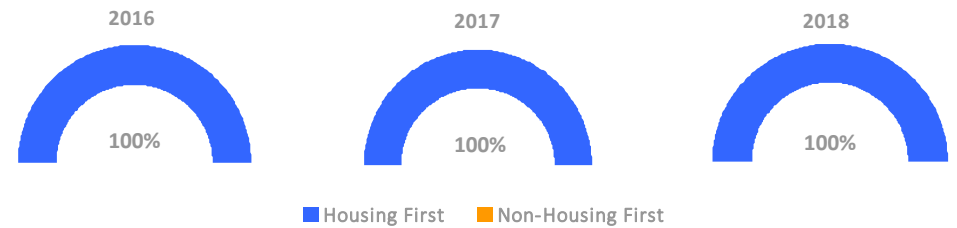
Returns to Homelessness Over Time



Exits to Permanent Housing by Program Type



Proportion of Housing First Projects by Year



Number of Projects by Year

	2016	2017	2018
Housing First Projects	10	10	10
Non-Housing First Projects	0	0	0

Data Summary: CA-519 Chico, Paradise/Butte County CoC

Point-In-Time Count Summary

	2014	2015	2016	2017	2018	2017-18 Change	% Change
Number of Sheltered Persons in Families	100	97	132	141	122	-19	-13%
Number of Unsheltered Persons in Families	10	2	2	57	57	0	0%
Number of Sheltered Individuals	173	189	157	309	258	-51	-17%
Number of Unsheltered Individuals	413	283	283	688	688	0	0%
Total Homeless Persons	696	571	574	1,195	1,125	-70	-6%
Number of Sheltered Families	31	31	31	48	43	-5	-10%
Number of Unsheltered Families	4	1	1	18	18	0	0%
Number of Total Families	35	32	32	66	61	-5	-8%
Sheltered Chronically Homeless Individuals	43	44	32	92	64	-28	-30%
Unsheltered Chronically Homeless Individuals	264	206	206	403	403	0	0%
Total Chronically Homeless Individuals	307	250	238	495	467	-28	-6%
Sheltered Veterans	40	23	22	30	29	-1	-3%
Unsheltered Veterans	55	27	27	80	80	0	0%
Total Veterans	95	50	49	110	109	-1	-1%
Sheltered Unaccompanied Youth (up to 24)	--	21	33	26	26	0	0%
Unsheltered Unaccompanied Youth (up to 24)	--	36	36	42	42	0	0%
Total Unaccompanied Youth (up to 24)	--	57	69	68	68	0	0%

System Performance Measures Summary

	2014	2015	2016	2017	2018	2017-18 Change	% Change
Average Length of Time Homeless (days)	N/A	83	95	86	117	31	36%
Rate People Return to Homelessness in 6 Months	N/A	--	0.0%	15.9%	21.9%	6%	N/A
Number of People who are Homeless for the First Time	N/A	952	846	926	777	-149	-16.1%
Rate People Exit from ES, SH, TH, and RRH to PH	N/A	41.5%	29.4%	24.4%	25.9%	1.5%	N/A
Rate People in PSH and OPH Retain or Exit to PH	N/A	93.8%	93.2%	94.5%	94.5%	0%	N/A

Housing Inventory Count Summary

	2014	2015	2016	2017	2018	2017-18 Change	% Change
Emergency Shelter (ES)	208	228	229	231	220	-11	-5%
Transitional Housing (TH)	111	104	116	232	189	-43	-19%
Permanent Supportive Housing (PSH)	241	130	291	345	368	23	7%
Rapid Re-Housing (RRH)	--	--	5	17	35	18	106%
Other Permanent Housing (OPH)	--	--	5	18	53	35	194%

Award Summary

	2014	2015	2016	2017	2018	2017-18 Change	% Change
Continuum of Care (CoC)	\$578,630	\$533,470	\$528,301	\$559,817	\$552,718	(\$7,099)	-1%
ESG (CA state recipient - no direct funding)	\$10,627,068	\$11,651,365	\$11,827,536	\$12,006,375	\$11,776,926	(\$229,449)	-2%