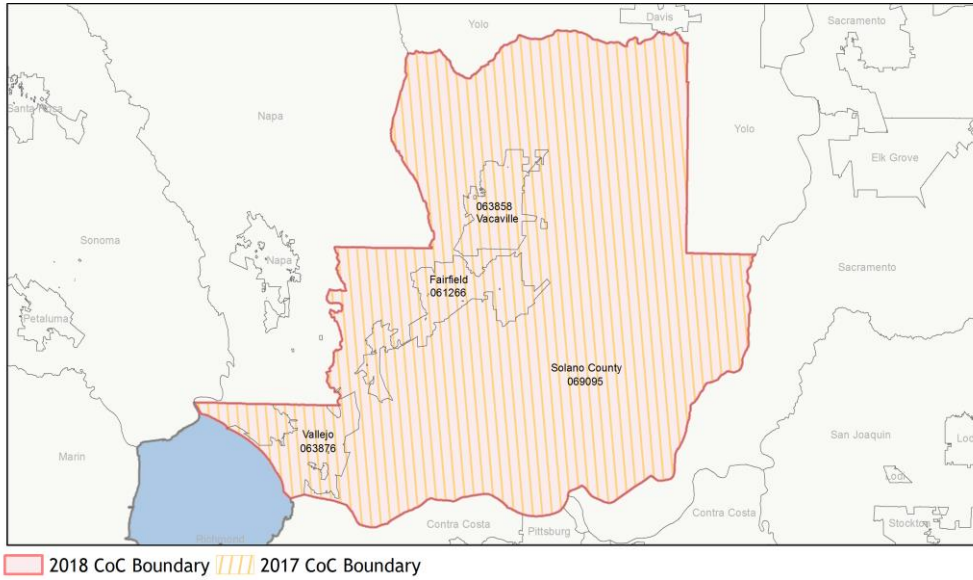
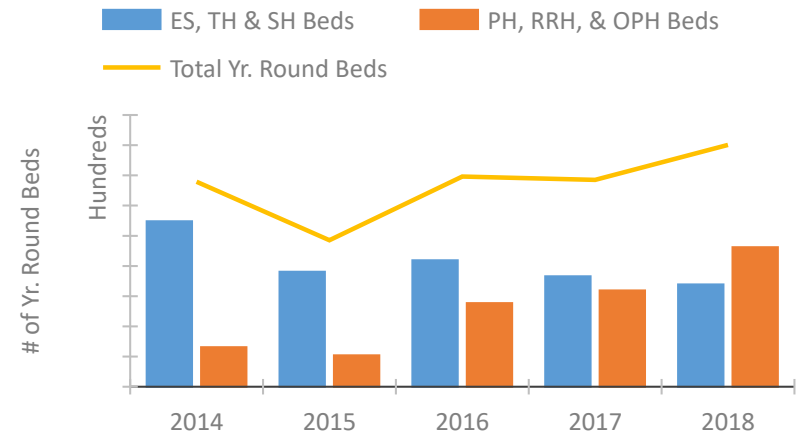


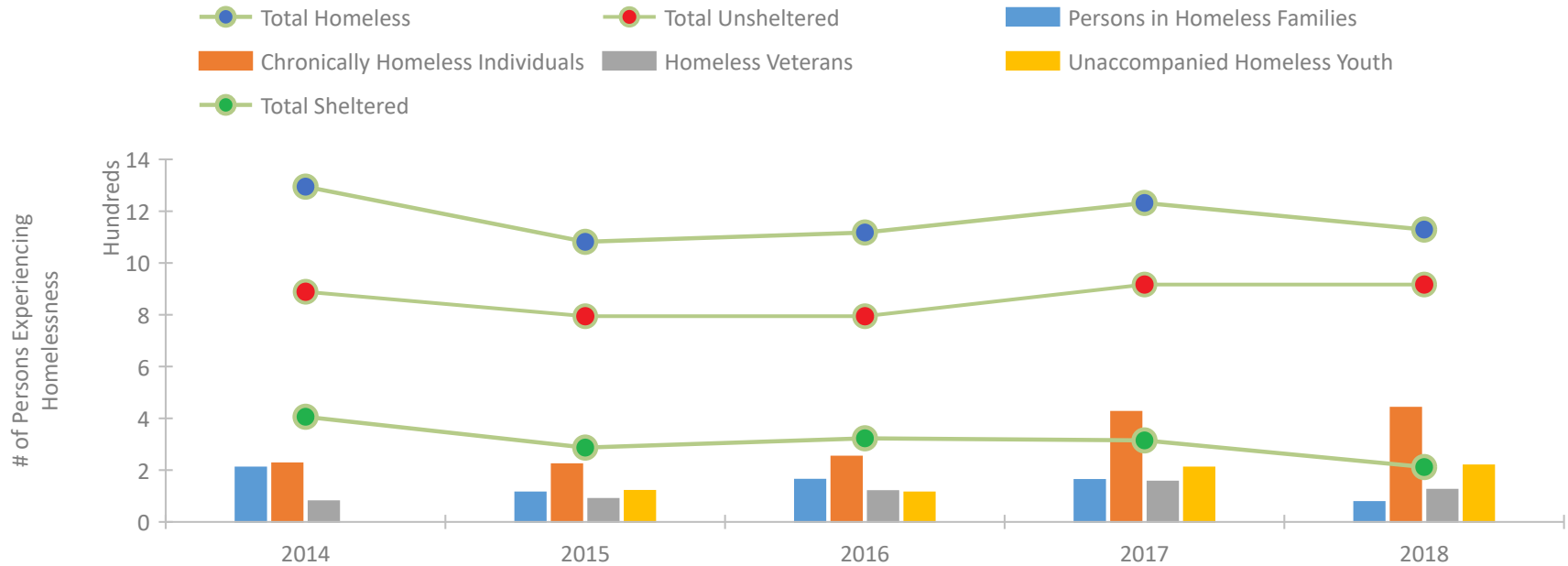
CoC Performance Profile CA-518 Vallejo/Solano County CoC



Housing Inventory Count by Program Type

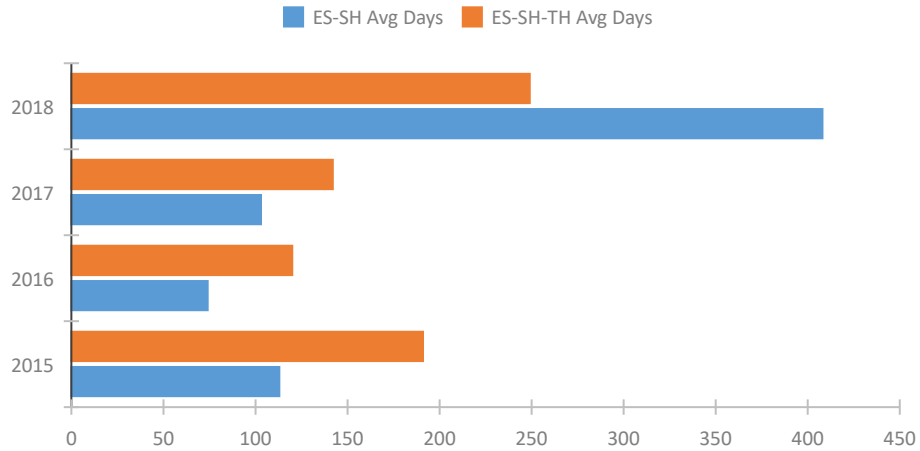


Homeless Population – Point-in-Time (PIT) Count

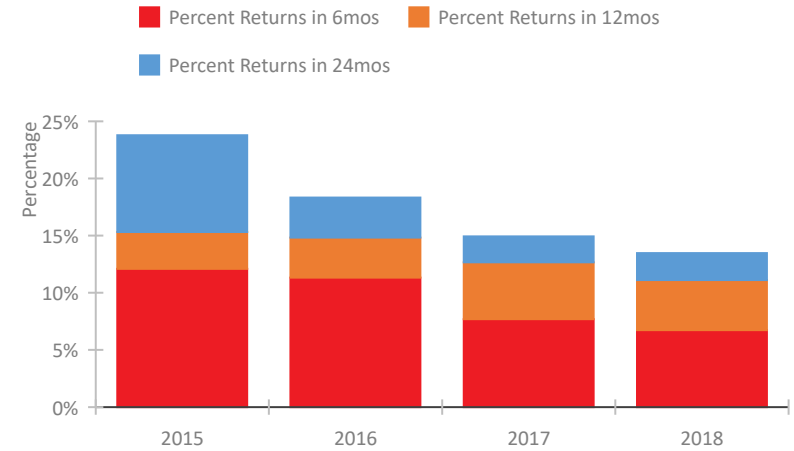


CoC Performance Profile CA-518 Vallejo/Solano County CoC

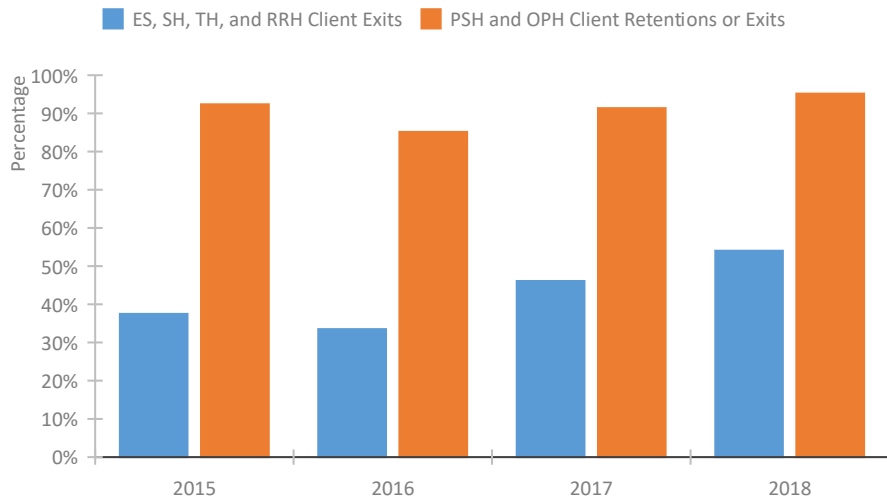
Length of Time Homeless



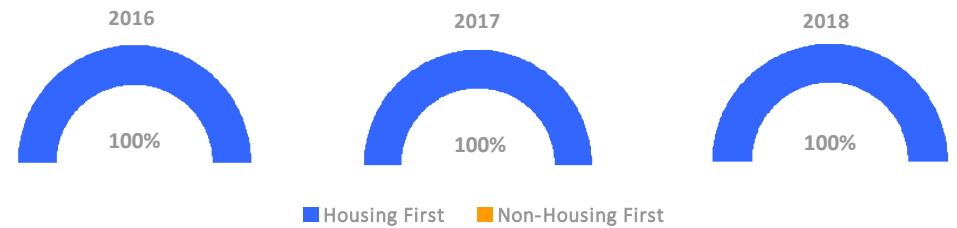
Returns to Homelessness Over Time



Exits to Permanent Housing by Program Type



Proportion of Housing First Projects by Year



Number of Projects by Year

	2016	2017	2018
Housing First Projects	15	16	14
Non-Housing First Projects	0	0	0

Data Summary: CA-518 Vallejo/Solano County CoC

Point-In-Time Count Summary

	2014	2015	2016	2017	2018	2017-18 Change	% Change
Number of Sheltered Persons in Families	158	97	146	131	46	-85	-65%
Number of Unsheltered Persons in Families	52	17	17	31	31	0	0%
Number of Sheltered Individuals	248	190	177	184	166	-18	-10%
Number of Unsheltered Individuals	837	778	778	886	886	0	0%
Total Homeless Persons	1,295	1,082	1,118	1,232	1,129	-103	-8%
Number of Sheltered Families	44	28	47	49	19	-30	-61%
Number of Unsheltered Families	21	6	6	9	9	0	0%
Number of Total Families	65	34	53	58	28	-30	-52%
Sheltered Chronically Homeless Individuals	37	9	38	54	70	16	30%
Unsheltered Chronically Homeless Individuals	189	214	214	371	371	0	0%
Total Chronically Homeless Individuals	226	223	252	425	441	16	4%
Sheltered Veterans	47	24	54	51	19	-32	-63%
Unsheltered Veterans	33	65	65	105	105	0	0%
Total Veterans	80	89	119	156	124	-32	-21%
Sheltered Unaccompanied Youth (up to 24)	--	12	6	31	39	8	26%
Unsheltered Unaccompanied Youth (up to 24)	--	108	108	179	179	0	0%
Total Unaccompanied Youth (up to 24)	--	120	114	210	218	8	4%

System Performance Measures Summary

	2014	2015	2016	2017	2018	2017-18 Change	% Change
Average Length of Time Homeless (days)	N/A	191	120	142	249	107	75.4%
Rate People Return to Homelessness in 6 Months	N/A	12.1%	11.3%	7.7%	6.7%	-1%	N/A
Number of People who are Homeless for the First Time	N/A	884	1072	987	740	-247	-25%
Rate People Exit from ES, SH, TH, and RRH to PH	N/A	37.5%	33.5%	46.1%	54.0%	7.9%	N/A
Rate People in PSH and OPH Retain or Exit to PH	N/A	92.4%	85.1%	91.4%	95.2%	3.8%	N/A

Housing Inventory Count Summary

	2014	2015	2016	2017	2018	2017-18 Change	% Change
Emergency Shelter (ES)	228	142	238	152	240	88	58%
Transitional Housing (TH)	320	239	181	214	99	-115	-54%
Permanent Supportive Housing (PSH)	131	104	183	217	257	40	18%
Rapid Re-Housing (RRH)	--	--	94	102	205	103	101%

Award Summary

	2014	2015	2016	2017	2018	2017-18 Change	% Change
Continuum of Care (CoC)	\$1,158,800	\$1,254,088	\$1,288,063	\$1,284,935	\$1,464,224	\$179,289	14%
ESG (CA state recipient - no direct funding)	\$10,627,068	\$11,651,365	\$11,827,536	\$12,006,375	\$11,776,926	(\$229,449)	-2%