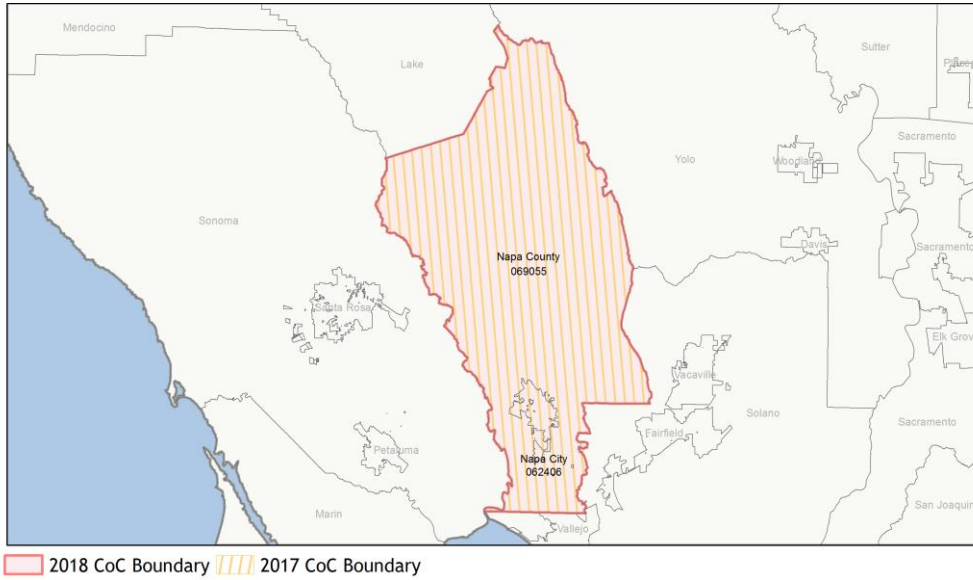
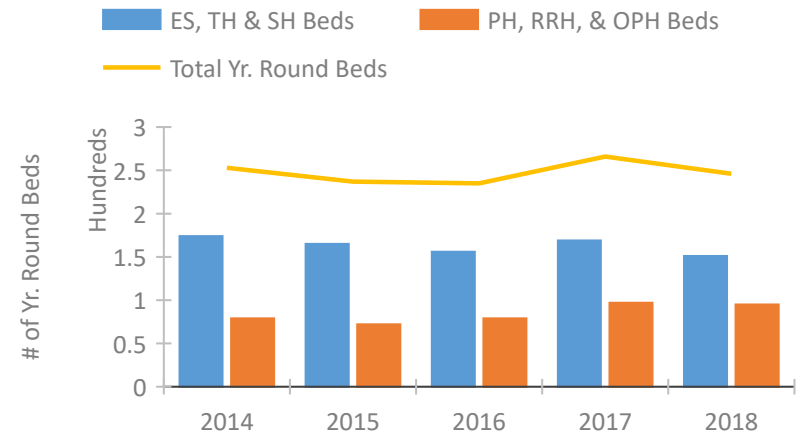


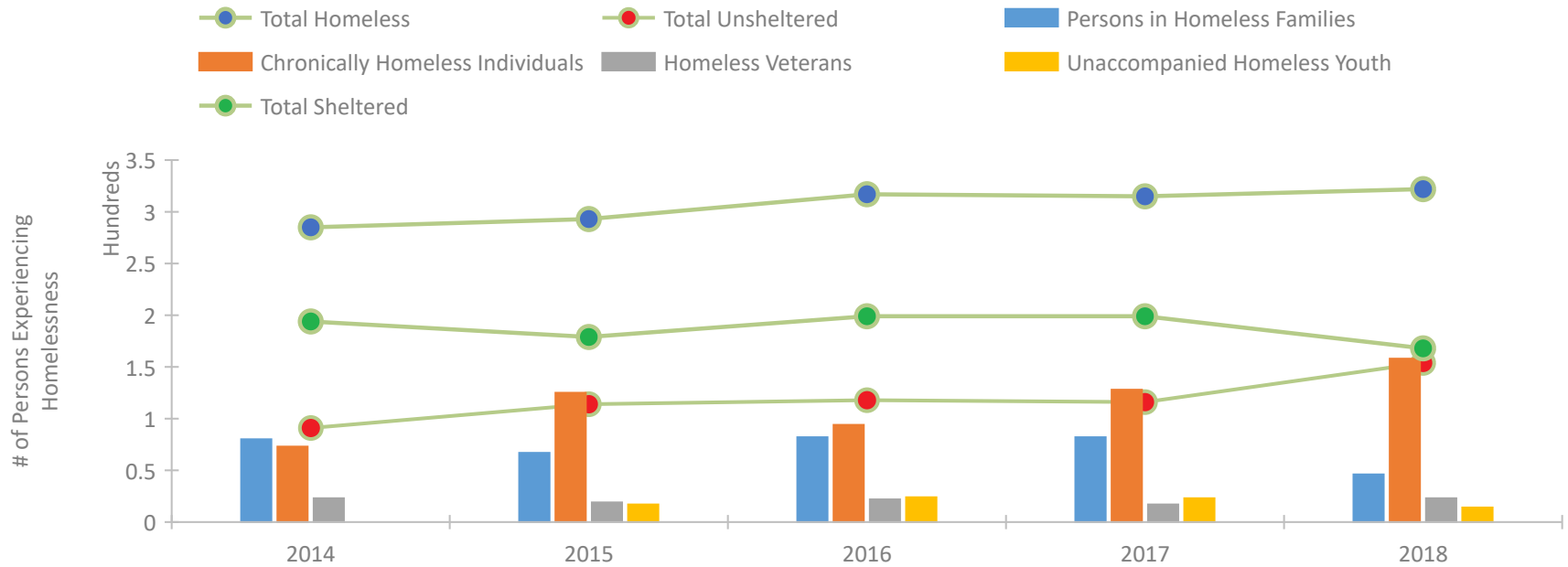
CoC Performance Profile CA-517 Napa City & County CoC



Housing Inventory Count by Program Type

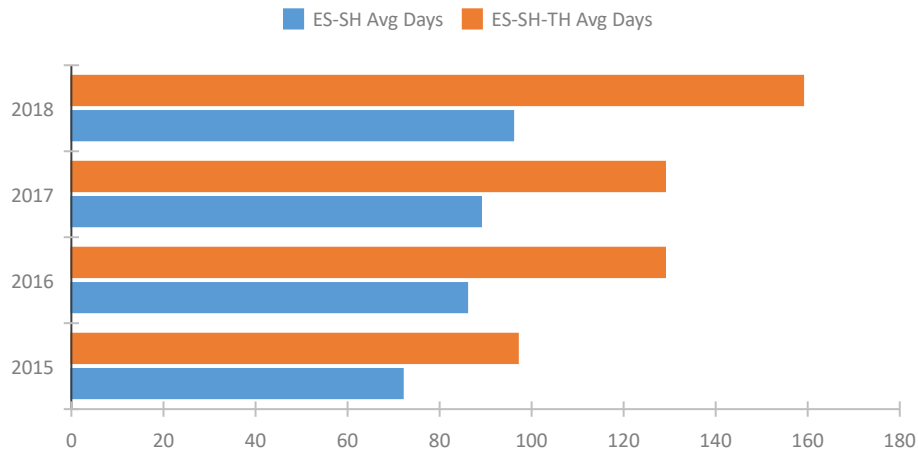


Homeless Population – Point-in-Time (PIT) Count

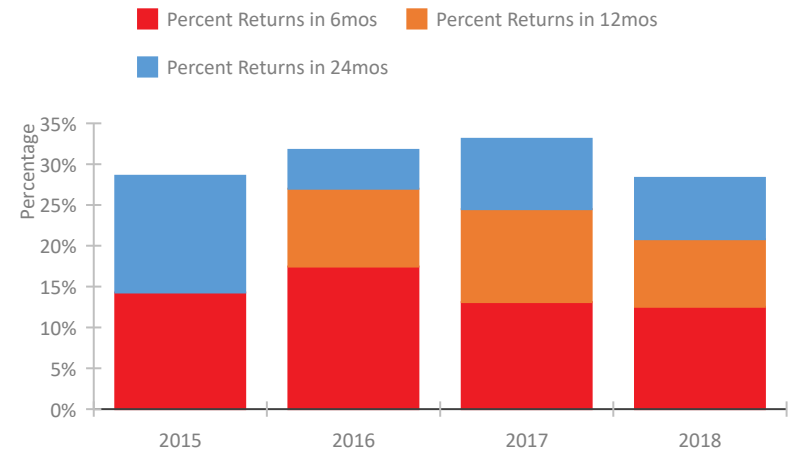


CoC Performance Profile CA-517 Napa City & County CoC

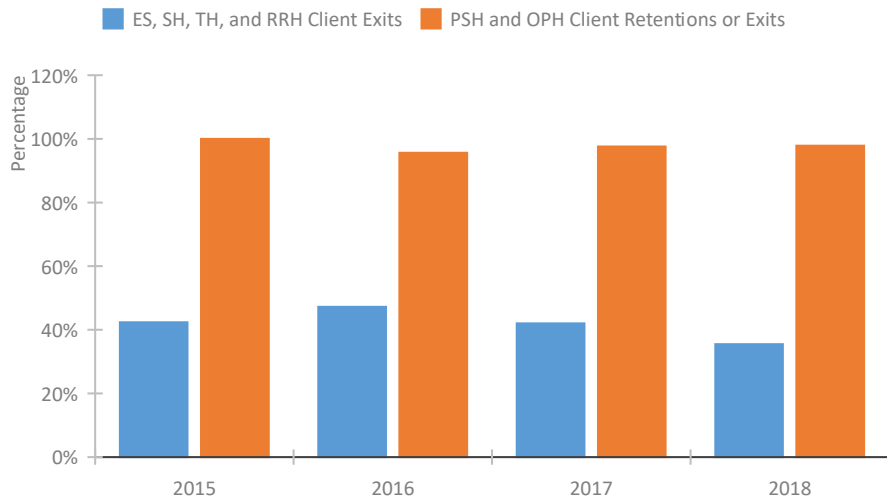
Length of Time Homeless



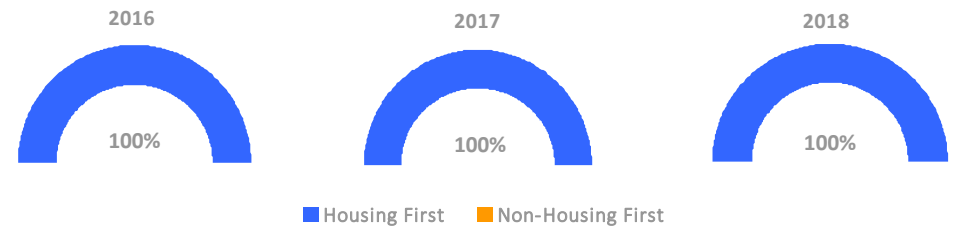
Returns to Homelessness Over Time



Exits to Permanent Housing by Program Type



Proportion of Housing First Projects by Year



Number of Projects by Year

	2016	2017	2018
Housing First Projects	6	6	6
Non-Housing First Projects	0	0	0

Data Summary: CA-517 Napa City & County CoC

Point-In-Time Count Summary

	2014	2015	2016	2017	2018	2017-18 Change	% Change
Number of Sheltered Persons in Families	80	67	72	82	43	-39	-48%
Number of Unsheltered Persons in Families	0	0	10	0	3	3	100%
Number of Sheltered Individuals	114	112	127	117	125	8	7%
Number of Unsheltered Individuals	91	114	108	116	151	35	30%
Total Homeless Persons	285	293	317	315	322	7	2%
Number of Sheltered Families	29	21	19	24	13	-11	-46%
Number of Unsheltered Families	0	0	2	0	1	1	100%
Number of Total Families	29	21	21	24	14	-10	-42%
Sheltered Chronically Homeless Individuals	31	48	53	75	66	-9	-12%
Unsheltered Chronically Homeless Individuals	42	77	41	53	92	39	74%
Total Chronically Homeless Individuals	73	125	94	128	158	30	23%
Sheltered Veterans	9	11	8	8	13	5	62%
Unsheltered Veterans	14	8	14	9	10	1	11%
Total Veterans	23	19	22	17	23	6	35%
Sheltered Unaccompanied Youth (up to 24)	--	15	20	7	9	2	29%
Unsheltered Unaccompanied Youth (up to 24)	--	2	4	16	5	-11	-69%
Total Unaccompanied Youth (up to 24)	--	17	24	23	14	-9	-39%

System Performance Measures Summary

	2014	2015	2016	2017	2018	2017-18 Change	% Change
Average Length of Time Homeless (days)	N/A	97	129	129	159	30	23.3%
Rate People Return to Homelessness in 6 Months	N/A	14.3%	17.5%	13.1%	12.5%	-0.6%	N/A
Number of People who are Homeless for the First Time	N/A	396	337	342	354	12	3.5%
Rate People Exit from ES, SH, TH, and RRH to PH	N/A	42.4%	47.2%	42.0%	35.5%	-6.5%	N/A
Rate People in PSH and OPH Retain or Exit to PH	N/A	100.0%	95.7%	97.6%	97.9%	0.3%	N/A

Housing Inventory Count Summary

	2014	2015	2016	2017	2018	2017-18 Change	% Change
Emergency Shelter (ES)	104	103	97	101	85	-16	-16%
Transitional Housing (TH)	70	62	59	68	66	-2	-3%
Permanent Supportive Housing (PSH)	52	49	51	47	57	10	21%
Rapid Re-Housing (RRH)	27	23	28	50	38	-12	-24%

Award Summary

	2014	2015	2016	2017	2018	2017-18 Change	% Change
Continuum of Care (CoC)	\$609,318	\$712,708	\$715,483	\$745,886	\$739,826	(\$6,060)	-1%
ESG (CA state recipient - no direct funding)	\$10,627,068	\$11,651,365	\$11,827,536	\$12,006,375	\$11,776,926	(\$229,449)	-2%