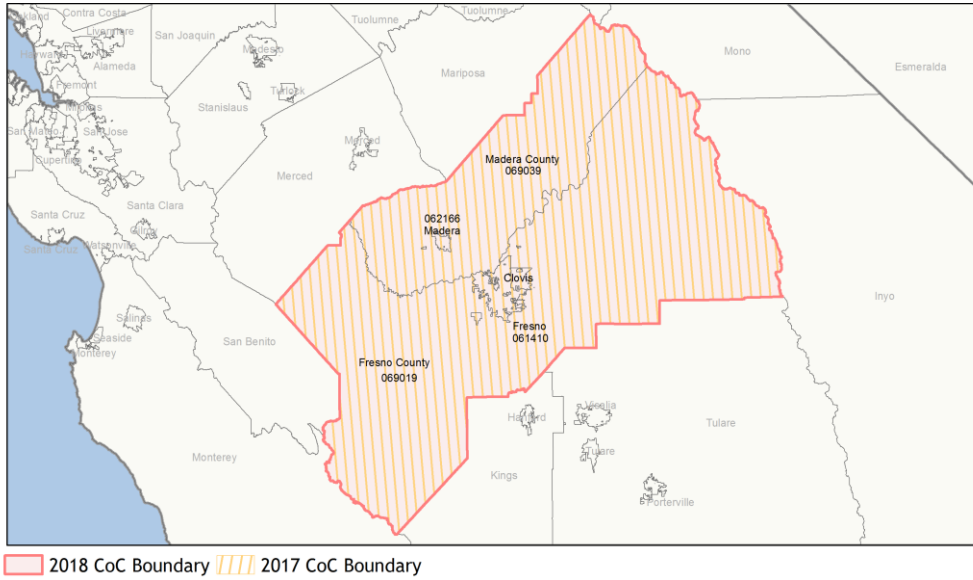
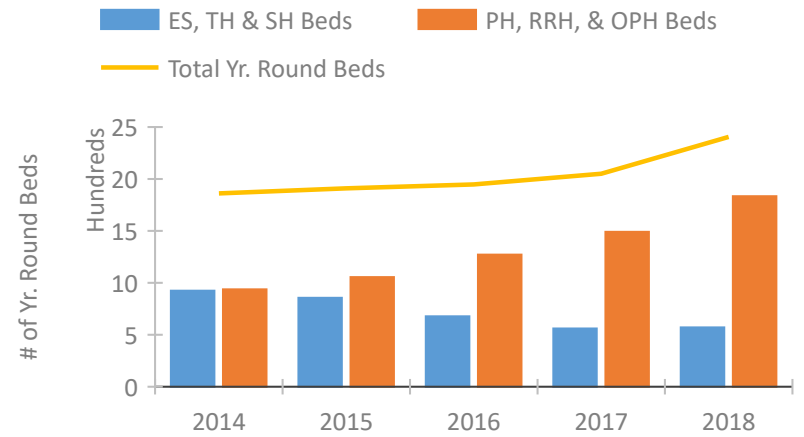


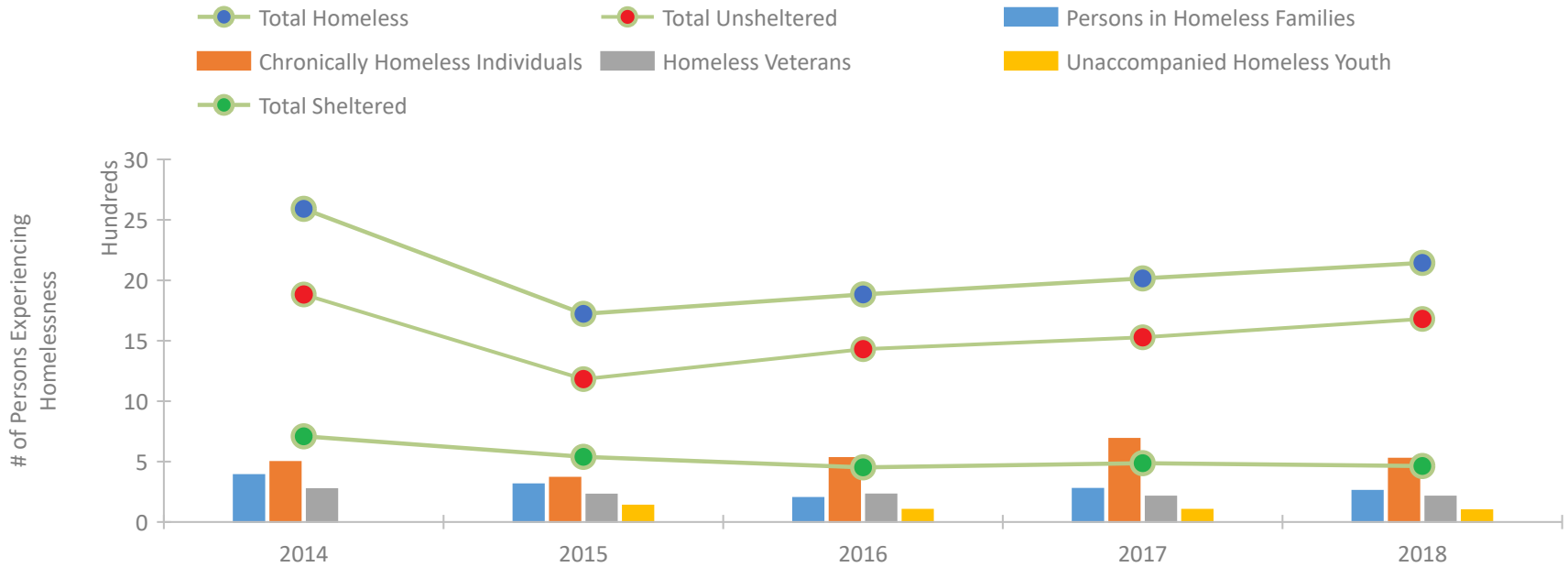
CoC Performance Profile CA-514 Fresno City & County/Madera County CoC



Housing Inventory Count by Program Type

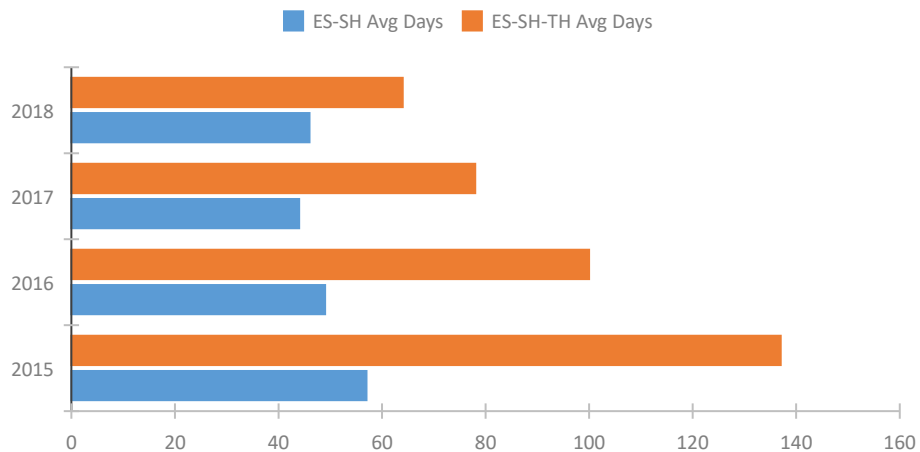


Homeless Population – Point-in-Time (PIT) Count

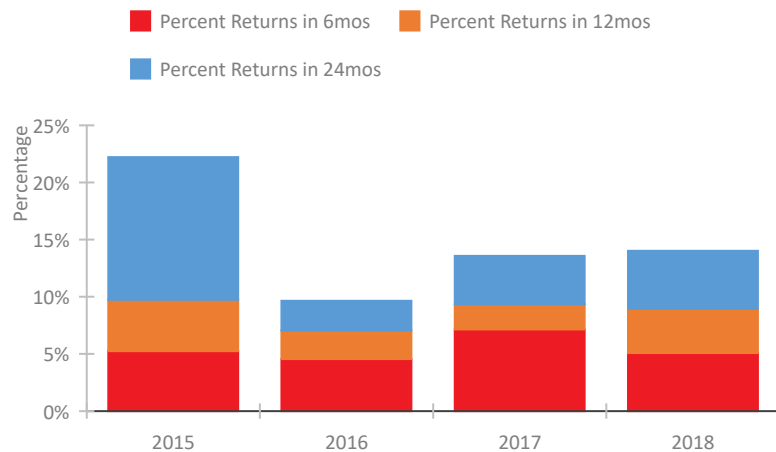


CoC Performance Profile CA-514 Fresno City & County/Madera County CoC

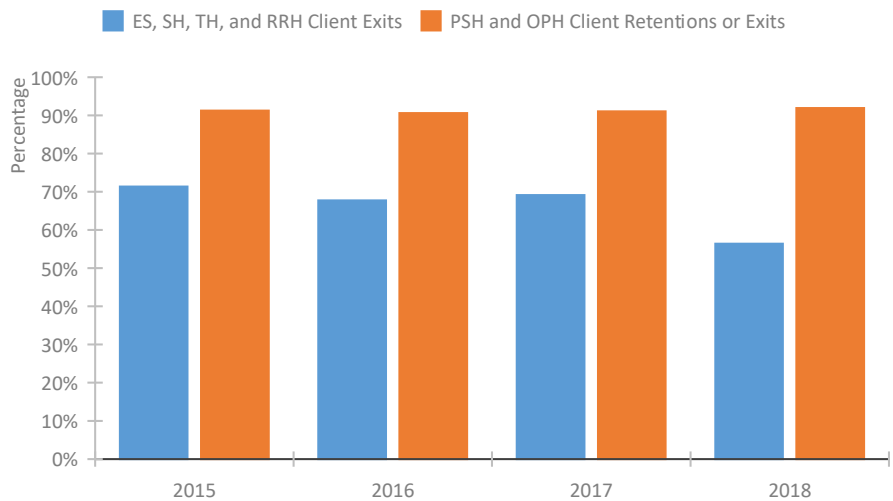
Length of Time Homeless



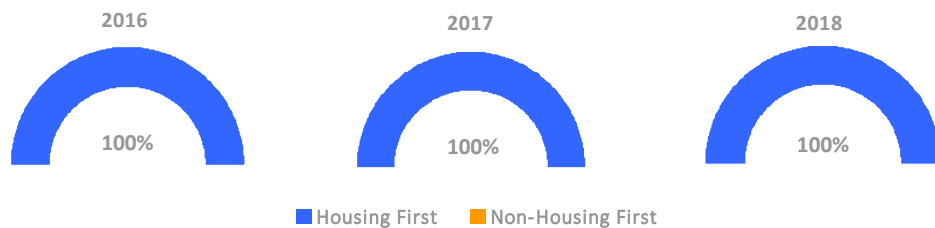
Returns to Homelessness Over Time



Exits to Permanent Housing by Program Type



Proportion of Housing First Projects by Year



Number of Projects by Year

	2016	2017	2018
Housing First Projects	28	34	36
Non-Housing First Projects	0	0	0

Data Summary: CA-514 Fresno City & County/Madera County CoC

Point-In-Time Count Summary

	2014	2015	2016	2017	2018	2017-18 Change	% Change
Number of Sheltered Persons in Families	379	305	176	274	249	-25	-9%
Number of Unsheltered Persons in Families	10	7	23	0	9	9	100%
Number of Sheltered Individuals	330	234	276	213	214	1	0%
Number of Unsheltered Individuals	1,873	1,176	1,408	1,529	1,672	143	9%
Total Homeless Persons	2,592	1,722	1,883	2,016	2,144	128	6%
Number of Sheltered Families	114	91	56	82	81	-1	-1%
Number of Unsheltered Families	5	2	6	0	3	3	100%
Number of Total Families	119	93	62	82	84	2	2%
Sheltered Chronically Homeless Individuals	22	21	18	45	42	-3	-7%
Unsheltered Chronically Homeless Individuals	475	345	511	643	482	-161	-25%
Total Chronically Homeless Individuals	497	366	529	688	524	-164	-24%
Sheltered Veterans	85	87	84	88	86	-2	-2%
Unsheltered Veterans	187	140	144	123	125	2	2%
Total Veterans	272	227	228	211	211	0	0%
Sheltered Unaccompanied Youth (up to 24)	--	44	44	33	30	-3	-9%
Unsheltered Unaccompanied Youth (up to 24)	--	92	57	68	67	-1	-1%
Total Unaccompanied Youth (up to 24)	--	136	101	101	97	-4	-4%

System Performance Measures Summary

	2014	2015	2016	2017	2018	2017-18 Change	% Change
Average Length of Time Homeless (days)	N/A	137	100	78	64	-14	-17.9%
Rate People Return to Homelessness in 6 Months	N/A	5.2%	4.5%	7.1%	5.1%	-2.1%	N/A
Number of People who are Homeless for the First Time	N/A	1162	1126	1579	1183	-396	-25.1%
Rate People Exit from ES, SH, TH, and RRH to PH	N/A	71.4%	67.7%	69.1%	56.4%	-12.7%	N/A
Rate People in PSH and OPH Retain or Exit to PH	N/A	91.3%	90.6%	91.1%	91.9%	0.9%	N/A

Housing Inventory Count Summary

	2014	2015	2016	2017	2018	2017-18 Change	% Change
Emergency Shelter (ES)	435	372	412	380	425	45	12%
Safe Haven (SH)	24	24	24	24	24	0	0%
Transitional Housing (TH)	465	460	241	156	122	-34	-22%
Permanent Supportive Housing (PSH)	884	1,039	1,114	1,253	1,308	55	4%
Rapid Re-Housing (RRH)	53	16	157	238	526	288	121%

Award Summary

	2014	2015	2016	2017	2018	2017-18 Change	% Change
Continuum of Care (CoC)	\$7,682,593	\$8,737,368	\$9,006,586	\$9,390,872	\$10,733,261	\$1,342,389	14%
Emergency Solutions Grants (ESG)	\$781,733	\$842,875	\$847,453	\$849,098	\$856,987	\$7,889	1%