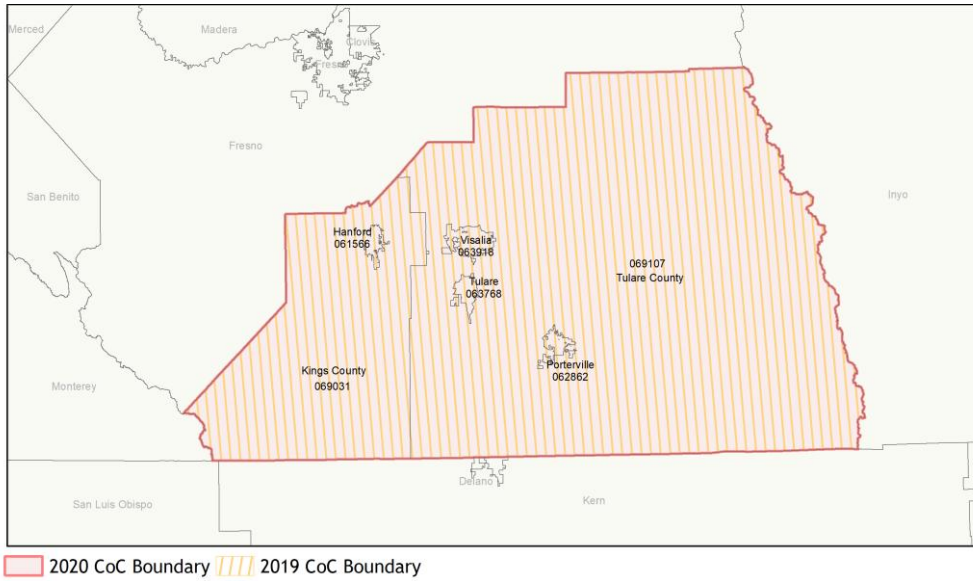
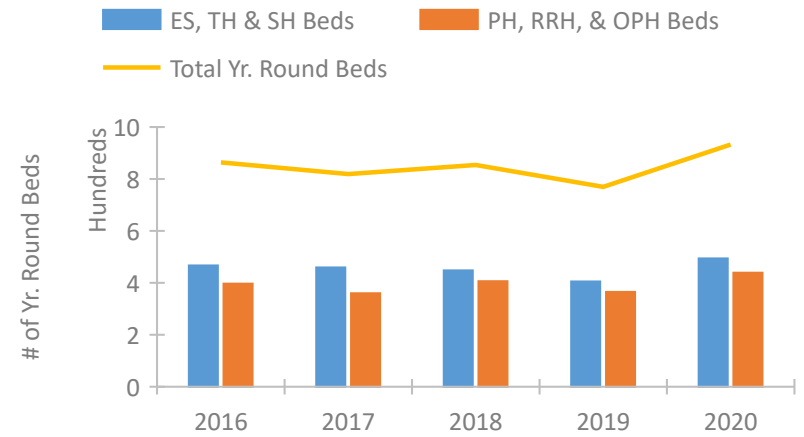


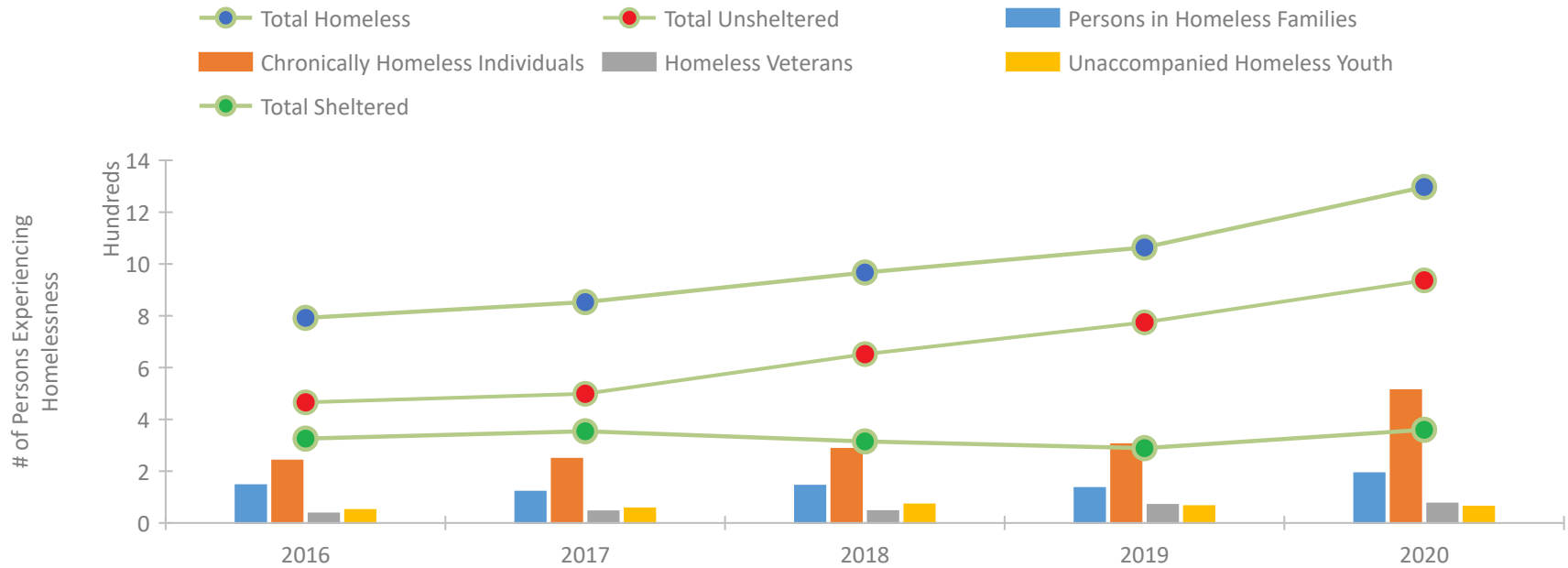
CoC Performance Profile CA-513 Visalia/Kings, Tulare Counties CoC



Housing Inventory Count by Program Type

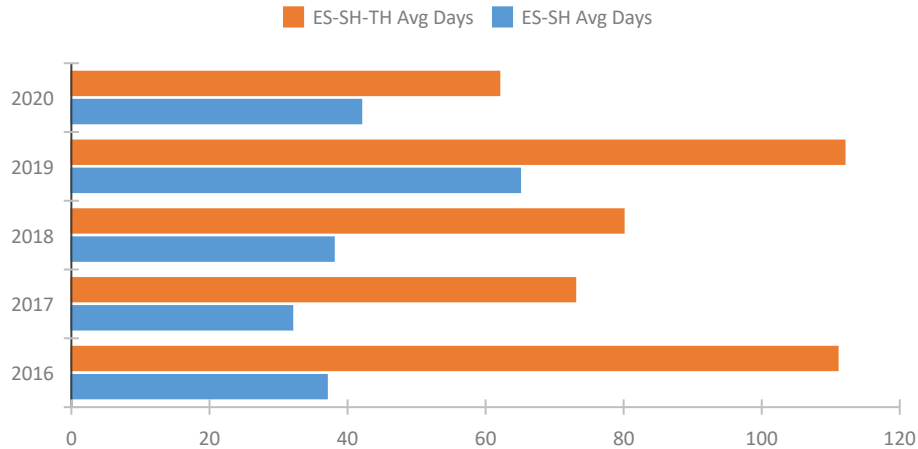


Homeless Population – Point-in-Time (PIT) Count

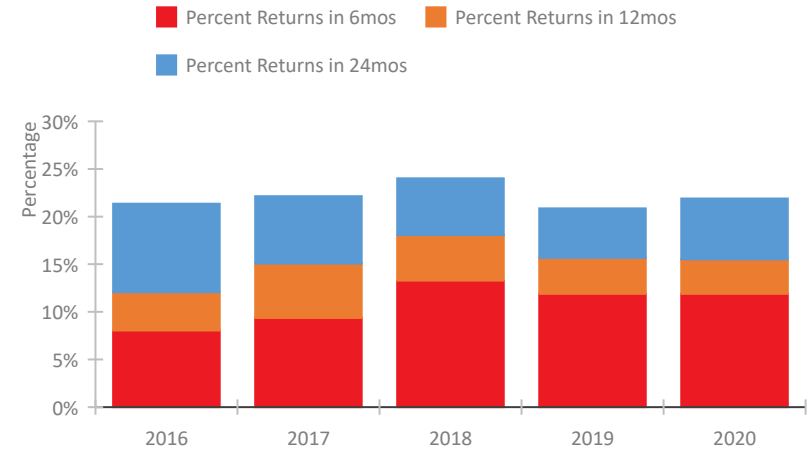


CoC Performance Profile CA-513 Visalia/Kings, Tulare Counties CoC

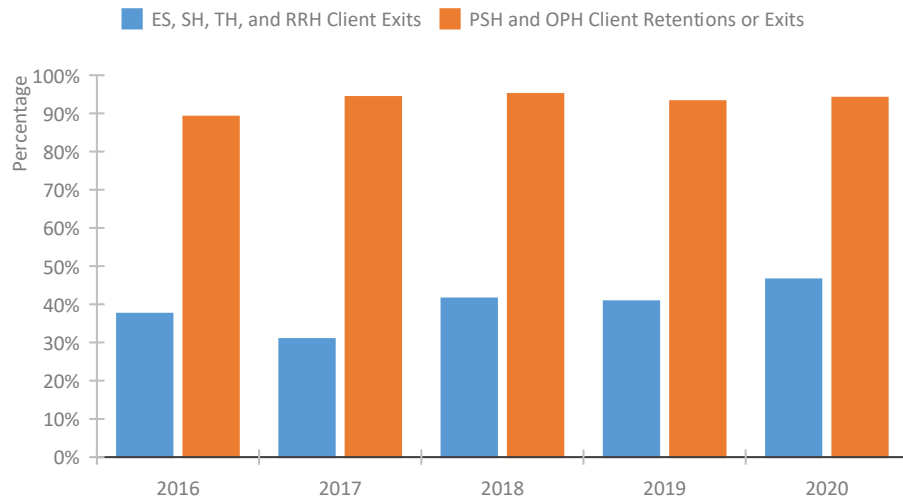
Length of Time Homeless



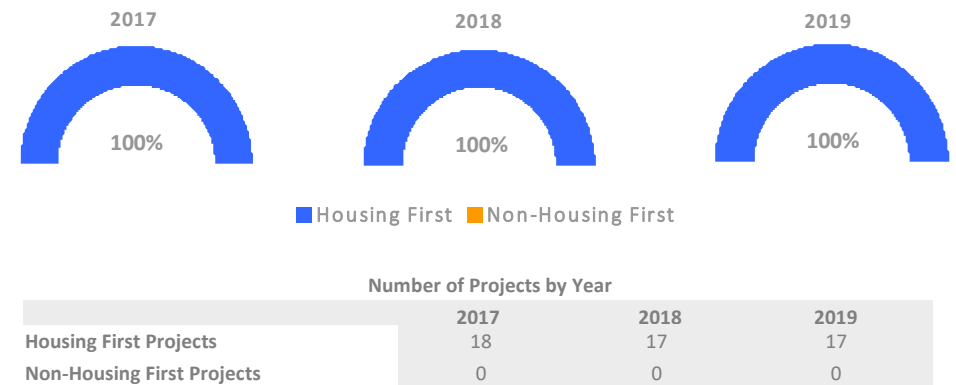
Returns to Homelessness Over Time



Exits to Permanent Housing by Program Type



Proportion of Housing First Projects by Year*



*In 2020 HUD awarded renewal projects noncompetitively, therefore no new data was collected and Housing First data remains the same from 2019 to 2020.

Data Summary: CA-513 Visalia/Kings, Tulare Counties CoC

Point-In-Time Count Summary

	2016	2017	2018	2019	2020	2019-20 Change	% Change
Number of Sheltered Persons in Families	127	105	130	101	132	31	31%
Number of Unsheltered Persons in Families	19	16	14	34	60	26	76%
Number of Sheltered Individuals	199	249	185	188	228	40	21%
Number of Unsheltered Individuals	447	483	638	741	877	136	18%
Total Homeless Persons	792	853	967	1,064	1,297	233	22%
Number of Sheltered Families	39	32	40	32	40	8	25%
Number of Unsheltered Families	6	5	5	9	18	9	100%
Number of Total Families	45	37	45	41	58	17	41%
Sheltered Chronically Homeless Individuals	13	17	12	10	7	-3	-30%
Unsheltered Chronically Homeless Individuals	228	231	274	294	506	212	72%
Total Chronically Homeless Individuals	241	248	286	304	513	209	69%
Sheltered Veterans	4	15	6	10	13	3	30%
Unsheltered Veterans	33	30	40	60	62	2	3%
Total Veterans	37	45	46	70	75	5	7%
Sheltered Unaccompanied Youth (up to 24)	29	30	23	29	21	-8	-28%
Unsheltered Unaccompanied Youth (up to 24)	21	26	49	36	42	6	17%
Total Unaccompanied Youth (up to 24)	50	56	72	65	63	-2	-3%

System Performance Measures Summary

	2016	2017	2018	2018	2020	2019-20 Change	% Change
Average Length of Time Homeless (days)	111	73	80	112	62	-50	-44.6%
Rate People Return to Homelessness in 6 Months	8.0%	9.4%	13.3%	11.9%	11.9%	-0%	N/A
Number of People who are Homeless for the First Time	1,083	1,396	1,248	1,488	1,882	394	26.5%
Rate People Exit from ES, SH, TH, and RRH to PH	37.5%	30.9%	41.5%	40.8%	46.5%	5.7%	N/A
Rate People in PSH and OPH Retain or Exit to PH	89.1%	94.3%	95.1%	93.2%	94.1%	0.9%	N/A

Housing Inventory Count Summary

	2016	2017	2018	2019	2020	2019-20 Change	% Change
Emergency Shelter (ES)	237	268	255	234	310	76	32%
Transitional Housing (TH)	230	191	193	171	184	13	8%
Permanent Supportive Housing (PSH)	217	256	262	260	235	-25	-10%
Rapid Re-Housing (RRH)	180	104	144	105	139	34	32%
Other Permanent Housing (OPH)	--	--	--	--	65	--	--

Award Summary

	2016	2017	2018	2019	2020	2019-20 Change	% Change
Continuum of Care (CoC)	\$2,087,201	\$2,321,272	\$2,354,941	\$2,474,301	\$2,560,459	\$86,158	3%
ESG (CA state recipient - no direct funding)	\$11,827,536	\$12,006,375	\$11,776,926	\$12,222,551	\$12,757,275	\$534,724	4%